

BIFACIAL MODULE WITH DUAL GLASS

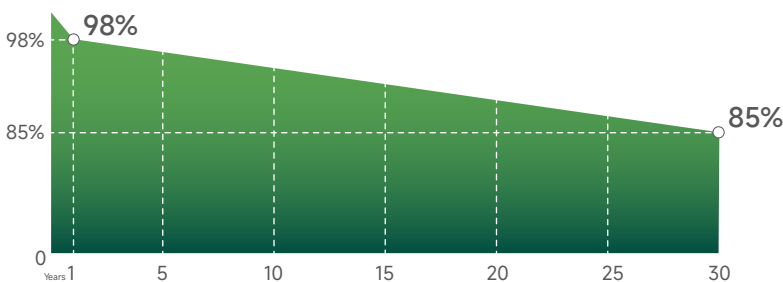
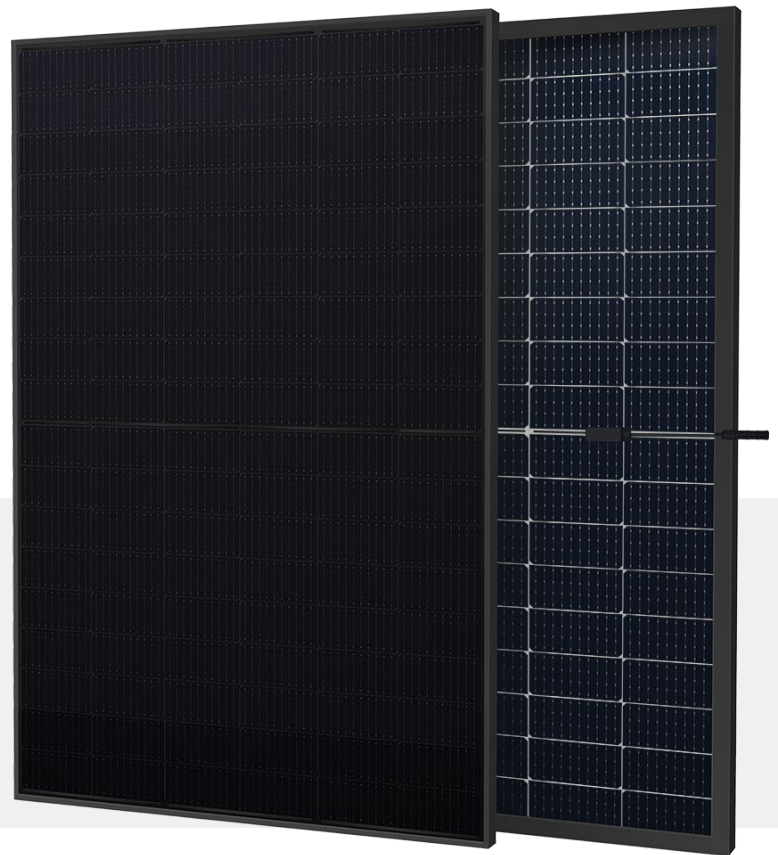
RS41-405~415MXG-E3

P-Type /Positive power tolerance of 0~+3%/Max module efficiency 21.25%

- Suitable for ground power plants and distributed projects
- Advanced module technology delivers superior module efficiency
 - Gallium-doped Wafer · Non destructive cutting · MBB half-cut
- Excellent power generation performance
 - Excellent IAM and low irradiation performance · Lower temperature coefficient
 - 0.45% linear Power decline
- High module quality ensures long-term reliability
 - Strict selected material · Advanced technology · Leading standard
- Ultra-hydrophilic self-cleaning coating techniques
- Enhanced Mechanical Load
 - Mechanical performance up to 5400pa positive load and 2400pa negative load

Complete System and IEC Product Certification

IEC 61215(2016), IEC 61730(2016) ISO9001:
2015:Quality Management System ISO14001:
2015:Environment Management System
ISO45001:2018:Occupational Health
and Safety Management System

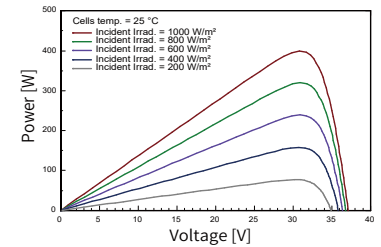
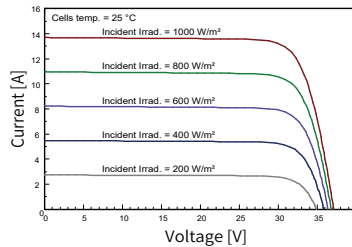
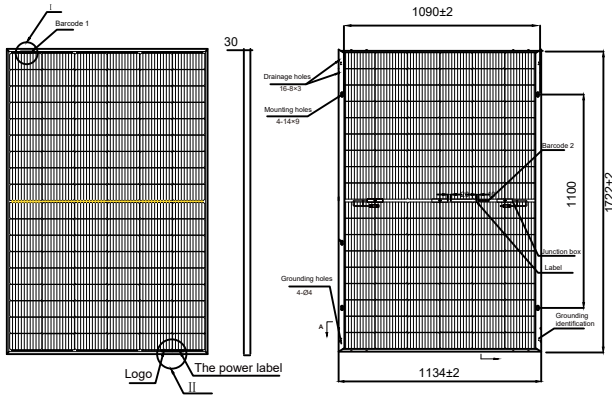


30-Year excess linear power output warranty



RS41-405~415MXG-E3

BIFACIAL MODULE WITH DUAL GLASS



Electrical Characteristics STC	RS41-405MXG-E3	RS41-410MXG-E3	RS41-415MXG-E3
Maximum Power (Pmax)	405W	410W	415W
Power Tolerance	0~+5W	0~+5W	0~+5W
Module Efficiency	20.74%	21.00%	21.25%
Maximum Power Current (Imp)	12.94A	13.02A	13.09A
Maximum Power Voltage (Vmp)	31.30V	31.50V	31.70V
Short Circuit Current (Isc)	13.72A	13.81A	13.91A
Open Circuit Voltage (Voc)	37.50V	37.70V	37.90V

Values at Standard Test Conditions STC(AM1.5, Irradiance 1000W/m², Cell Temperature 25°C)

Electrical Characteristics NOCT	RS41-405MXG-E3	RS41-410MXG-E3	RS41-415MXG-E3
Maximum Power (Pmax)	304.2W	308.0W	311.8W
Maximum Power Current (Imp)	10.45A	10.51A	10.57A
Maximum Power Voltage (Vmp)	29.10V	29.30V	29.50V
Short Circuit Current (Isc)	11.04A	11.11A	11.19A
Open Circuit Voltage (Voc)	35.00V	35.20V	35.40V

NOCT , Irradiance of 800W/m², AM1.5, Ambient Temperature 20 °C, wind Speed 1m/s.

Electrical Characteristics with 21% rear side power gain	RS41-405MXG-E3	RS41-410MXG-E3	RS41-415MXG-E3
Maximum Power (Pmax)	490.1W	496.1W	502.2W
Maximum Power Current (Imp)	15.66A	15.75A	15.84A
Maximum Power Voltage (Vmp)	31.30V	31.50V	31.70V
Short Circuit Current (Isc)	16.60A	16.71A	16.83A
Open Circuit Voltage (Voc)	37.50V	37.70V	37.90V

Mechanical Characteristics

Cell Type	MonoP-Type,182x182(±1)mm,108(6x18)Half-Cut cells
Glass	2mm+2mm,High Transmission,Low Iron,Tempered Glass
Frame	Anodized Aluminum Alloy
Junction Box	IP68 Rated, With Bypass Diodes
Dimension	1722×1134×30mm
Output Cable	4 mm2 (EU),300 mm,length can be customized
Weight	24.5kg
Installation Hole Location	See Drawing Above

Packing Information

Container	40' HQ
Pallets per Container	26
Pieces per Container	936

Characteristics

Temperature Coefficient of Voc	-0.27%/°C
Temperature Coefficient of Isc	+0.048%/°C
Temperature Coefficient of Pmax	-0.35%/°C
Nominal Operating Cell Temperature (NOCT)	45°C±2°C
Fire Performance	IEC Class C

Remark:Electrical data in this catalog do not refer to a single module and they are not part of the offer.They only serve for comparison among different module types.

Maximum Ratings

Operating Temperature	-40°C~+85°C
Maximum System Voltage	1500VDC
Maximum Series Fuse Rating	30A

