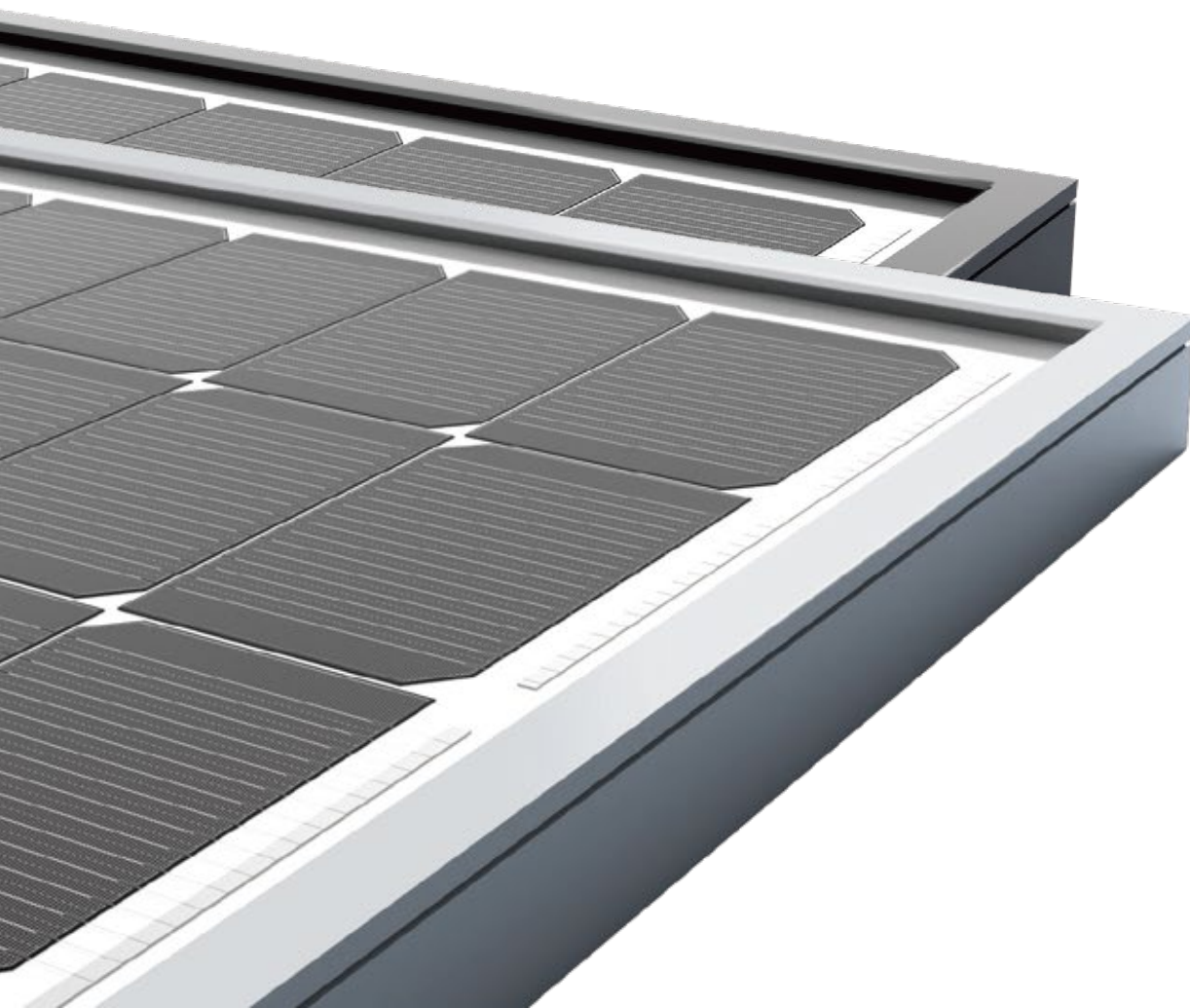


460~480W

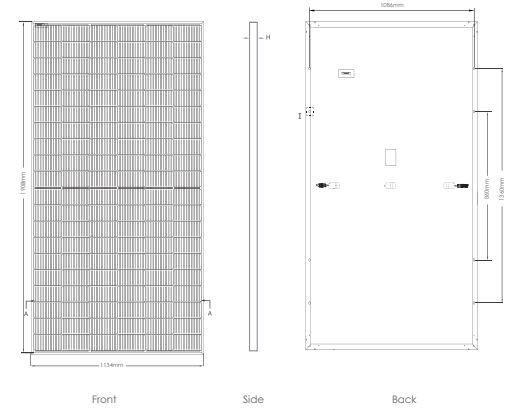
- N-TOPCon Cell Technology
- Excellent Durability
- Low Power Degradation
- Excellent Low Irradiance Performance
- Excellent An-PID, Low LID Performance
- Higher Power Output



Mechanical Parameters

Cell Orientation	120 (2x60)
Junction Box	IP68, three diodes
Output Cable	4mm ² , 300mm in length, length can be customized
Glass	Single glass 3.2mm coated tempered glass
Frame	Anodized aluminum alloy frame
Weight	24.2kg±3%
Dimension	1908×1134×35mm
Packaging	31 pcs per pallet 744pcs per 40'ft Container 155pcs per 20'ft Container

Operational Temperature	-40°C~+85°C
Power Output Tolerance	0~+5W
Voc & Isc Tolerance	±3%
Max. System Voltage	DC1500V(IEC/UL)
Max. Series Fuse Rating	25A
NOCT	45±2°C
Safety Class	II
Fire Rating	UL type 1 or 2
Max. Static Load(Front)	5400Pa
Max. Static Load(Back)	2400Pa



Electrical Characteristics

Model Number	SAS460MN-120H		SAS465MN-120H		SAS470MN-120H		SAS475MN-120H		SAS480MN-120H	
	STC	NOCT	STC	NOCT	STC	NOCT	STC	NOCT	STC	NOCT
Maximum Power (Pmax/W)	460	346	465	350	470	353	475	357	480	361
Open Circuit Voltage (Voc/V)	42.05	39.94	42.22	40.10	42.38	40.25	42.54	40.41	42.71	40.57
Short Circuit Current (Isc/A)	13.99	11.29	14.07	11.36	14.15	11.42	14.23	11.49	14.31	11.55
Voltage at Maximum Power (Vmp/V)	34.73	33.60	34.90	32.77	35.06	32.94	35.22	33.10	35.39	33.27
Current at Maximum Power (Imp/A)	13.25	10.61	13.33	10.67	13.41	10.73	13.48	10.77	13.57	10.85
Module Efficiency(%)	21.26		21.50		21.73		21.96		22.19	
Temperature Coefficient of Isc	0.045%/°C									
Temperature Coefficient of Voc	-0.25%/°C									
Temperature Coefficient of Pmax	-0.290%/°C									

* STC (Standard Testing Conditions): Irradiance 1000W/m², Cell Temperature 25°C, Spectra at AM1.5
 * NOCT (Nominal Operating Cell Temperature): Irradiance 800W/m², Ambient Temperature 20°C, Spectra at AM1.5, Wind at 1m/s
 * Test uncertainty for Pmax: ±3%

V-Curve (120H-182M-470W)

