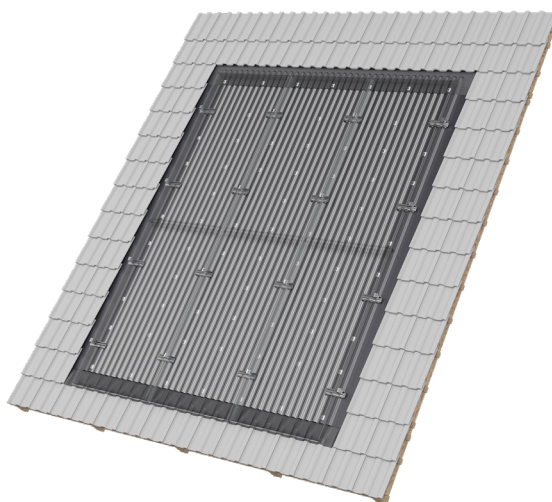




mounting  
systems



## Infix ProLine

Application	In-roof
Roof cladding	Suitable for most types of roof cladding
PV-modules	Framed and frameless modules
Roof inclination	10° to 45° (other slopes on request)
Total height of PV system	Portrait: 40 mm + module height Landscape: 30 mm + module height
Module arrangement	Coherent surfaces, also covering of the entire roof surface and integration of dormer window possible (after prior examination)
Module orientation	Portrait and Landscape
System Reference Number	Portrait (Ref.-No. 003-001-002-001) Landscape (Ref.-No. 003-001-001-001)
Roof structure	Battens as for conventional tile covering
Standards	Eurocode 1 – Actions on structures Eurocode 9 – Design of aluminium
Certificate	MPA Dresden: Fire behaviour tests in accordance with DIN EN 13501-5:2010-02
Supporting profiles	Extruded Aluminium (EN AW 6063 T66)
Small parts	Stainless steel (V2A)
Flashing (lateral and top)	Aluminium (EN AW 3005)
Corrugated metal	Aluminium (EN AW 3005)



In-roof



Framed modules



Frameless modules



Portrait orientation



Landscape orientation



Double roman tiles



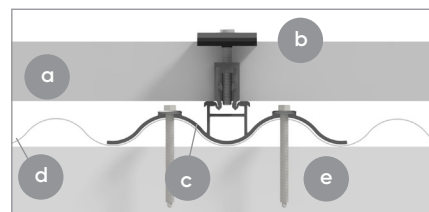
Slate



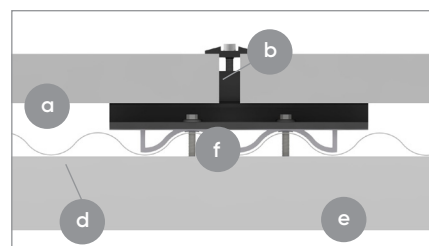
Plain tiles



Bitumen shingles



Horizontal section, landscape installation



Horizontal section, portrait installation

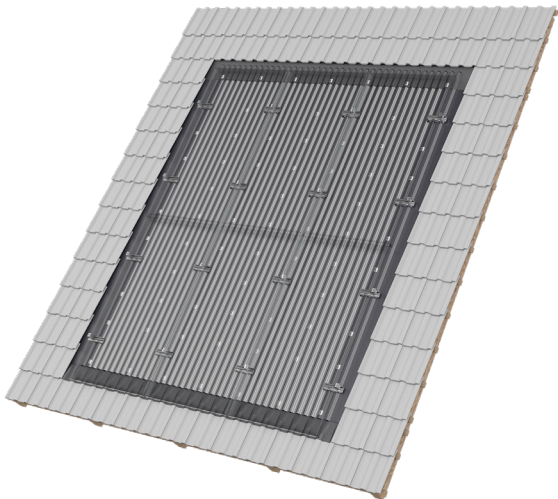
- a PV module
- b Module clamp
- c Adapter for landscape installation
- d Corrugated sheet
- e Roof batten
- f Adapter for portrait installation



For further information: [www.mounting-systems.com](http://www.mounting-systems.com)  
Subject to technical changes.  
2024 © Mounting Systems GmbH



mounting  
systems



Infix ProLine

Seals	EPDM
Colour	Plate finish, Cover plates in black on demand
Permissible solar panel dimensions	The permissible thickness for PV modules ranges from 30 to 50 mm, with no restrictions on width and length. Due to the diverse weight considerations, each project must evaluate PV module suitability based on static, wind, and snow load requirements
Warranty	10 Years

The maximum design value for wind resistance [Pa or N/m2] depends on variables such as roof type, pitch, structural properties, building regulations and calculation specifications. Depending on these, the maximum design value must be determined on a project-specific basis.



In-roof



Framed modules



Frameless modules



Portrait orientation



Landscape orientation



Double roman tiles



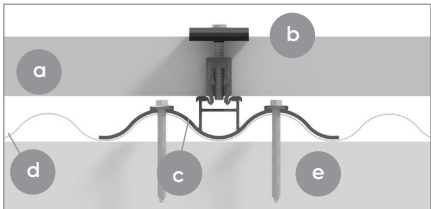
Slate



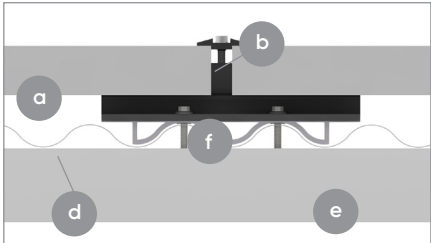
Plain tiles



Bitumen shingles



Horizontal section, landscape installation



Horizontal section, portrait installation

- a PV module
- b Module clamp
- c Adapter for landscape installation
- d Corrugated sheet
- e Roof batten
- f Adapter for portrait installation



For further information: [www.mounting-systems.com](http://www.mounting-systems.com)  
Subject to technical changes.  
2024 © Mounting Systems GmbH