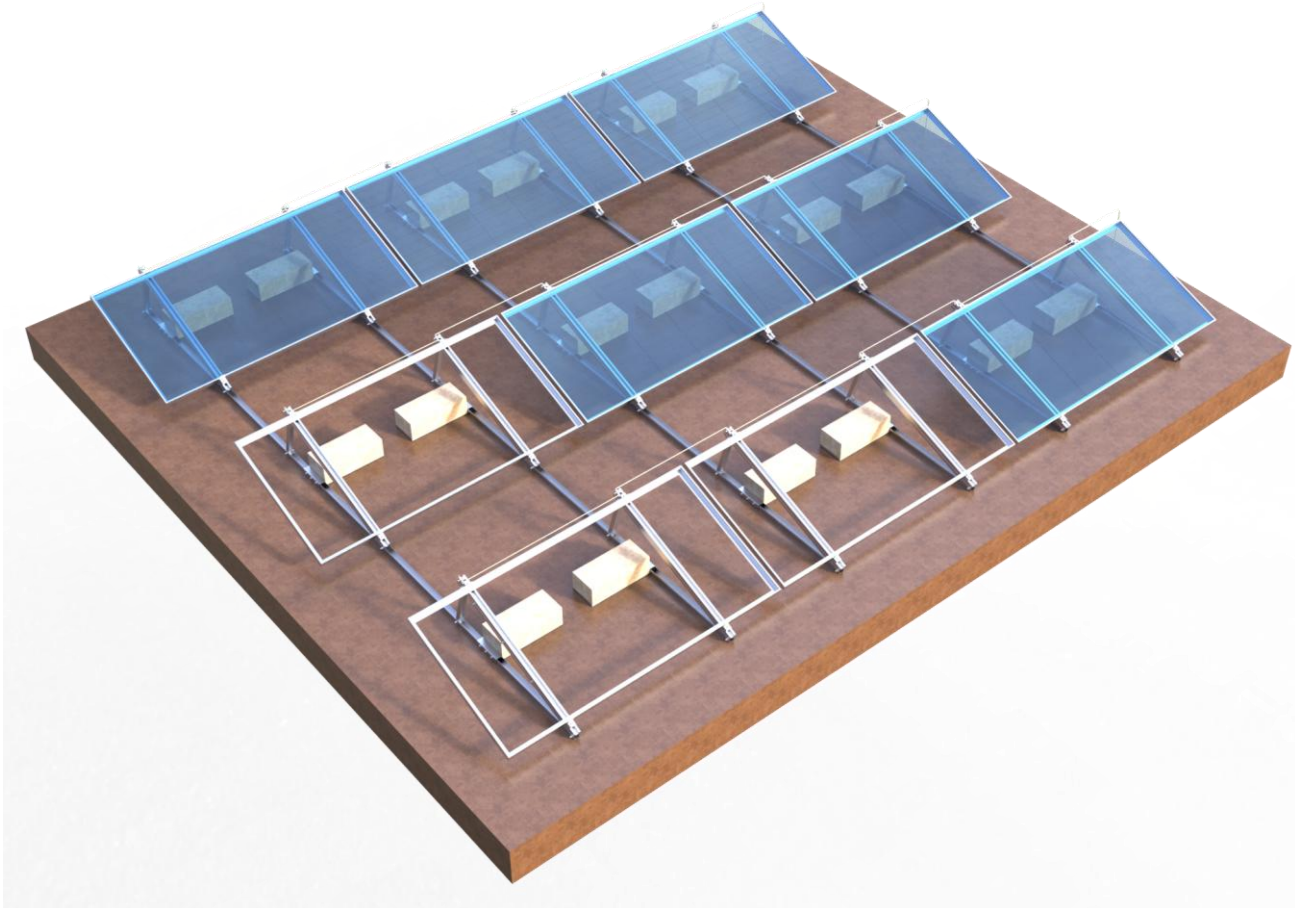
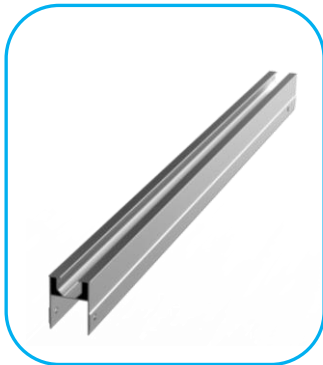
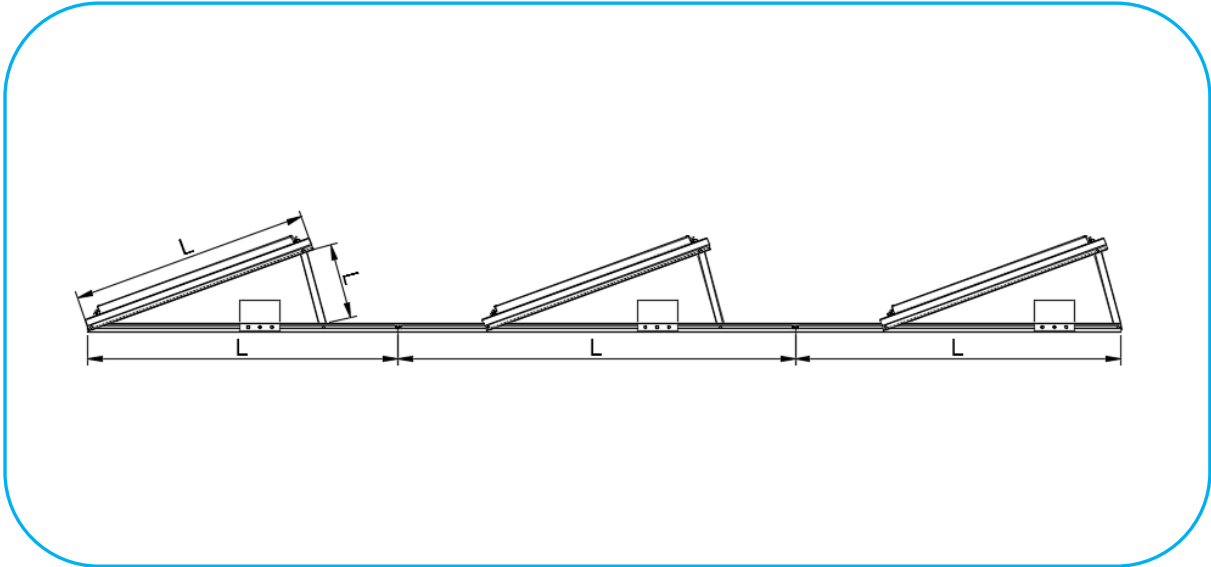


Ballast Bracket Installation Notes



1. Ballast bracket drawing



Main beam



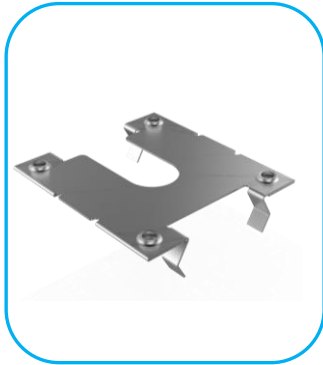
Bottom beam



Diagonal bracing



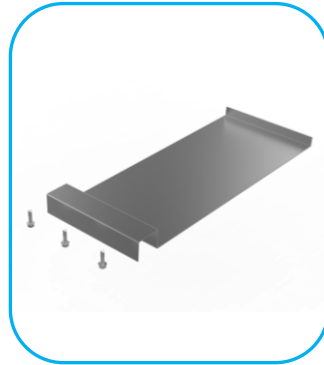
End clamp



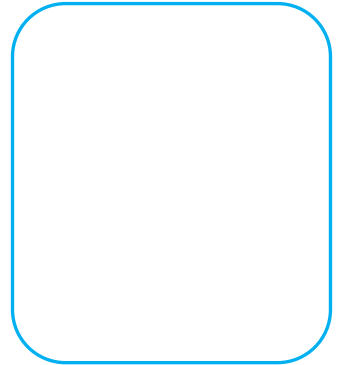
Ground clip



Diagonal bracing kit



Ballast pan



2. Installation tool



Tape measure



Ruler



Electric screw driver



Rope



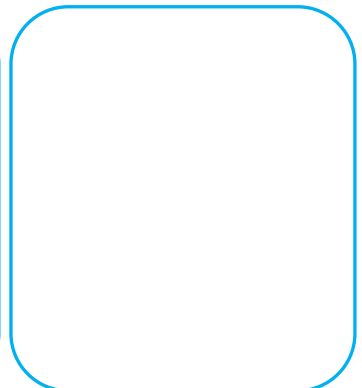
Electric screwdriver bit
(for M6-M8 socket head
cap screws)



Hexagonal wrench



For M6-M8 bolt socket
head



3. Ballast bracket installation sequence

3.1 Assembly of the brackets

1) Typically, it is pre-assembled in the state shown below. When assembling, fix it with screws according to the drawing.



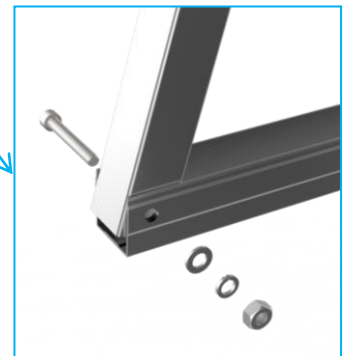
2) After unfolding, adjust the position of the parts and lock the bracket as shown in the figure below.

Use M8*60 bolts to fix the main beam and the diagonal bracing and the diagonal bracing kit



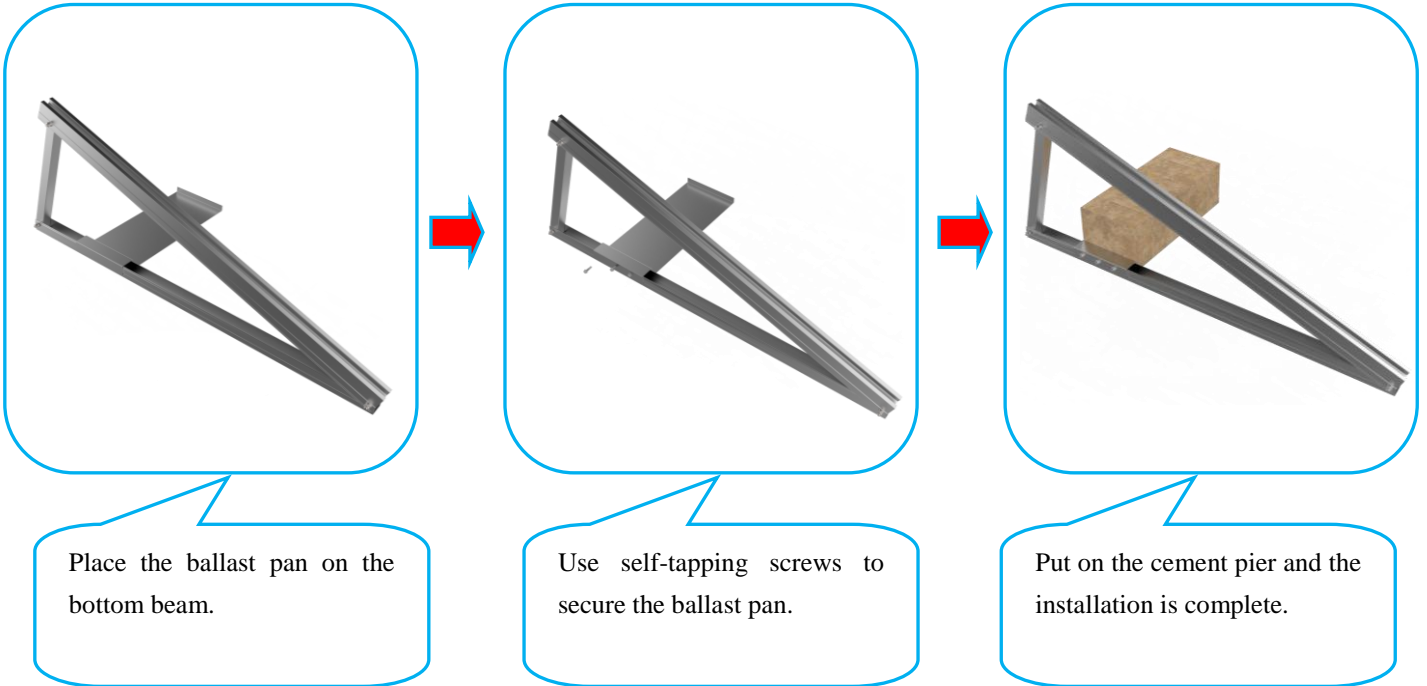
Use M8*60 bolts to fix the main beam and the bottom beam

Use M8*60 bolts to fix the diagonal brace and bottom beam

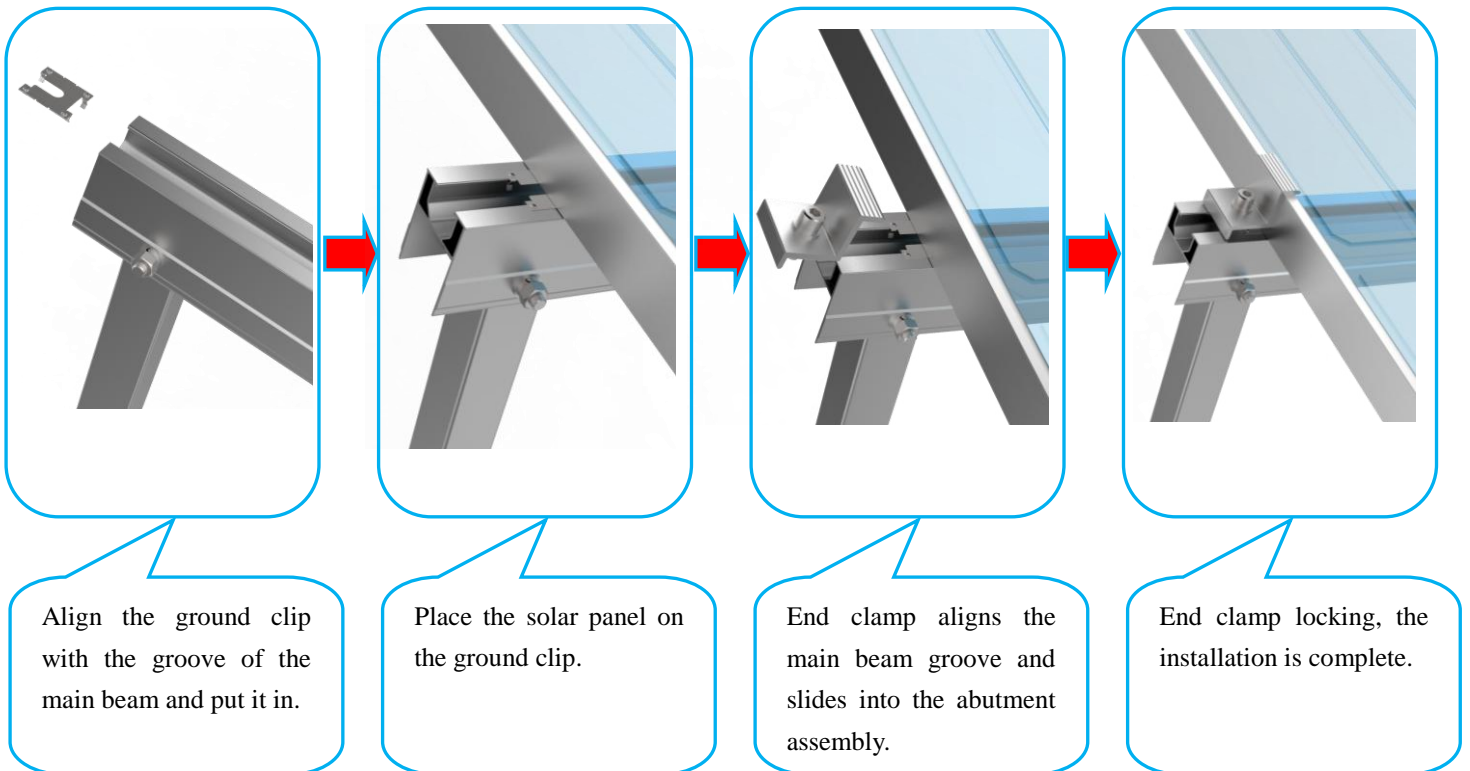


3.2 Installation of ballast bracket

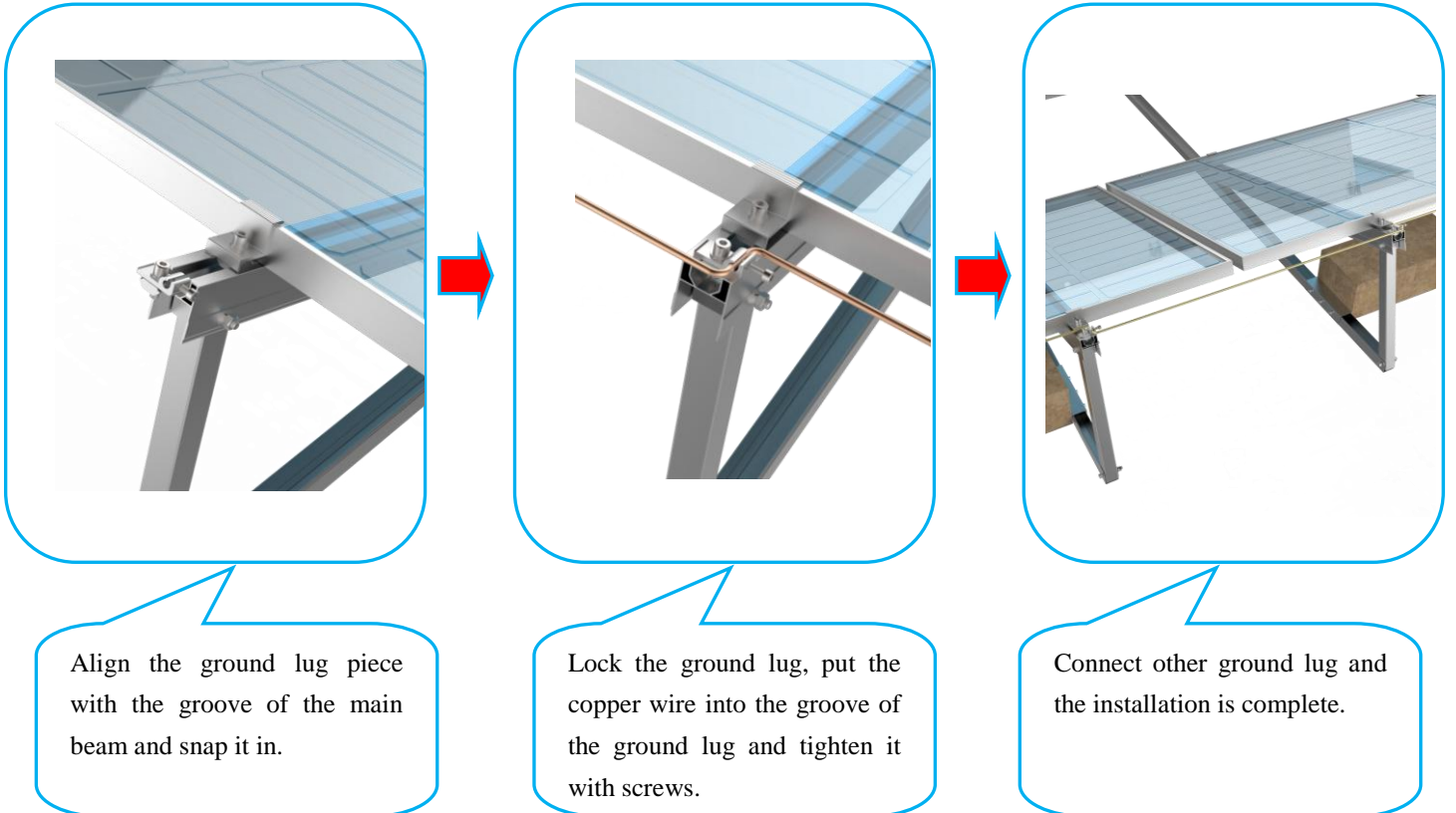
1) Ballast pan installation



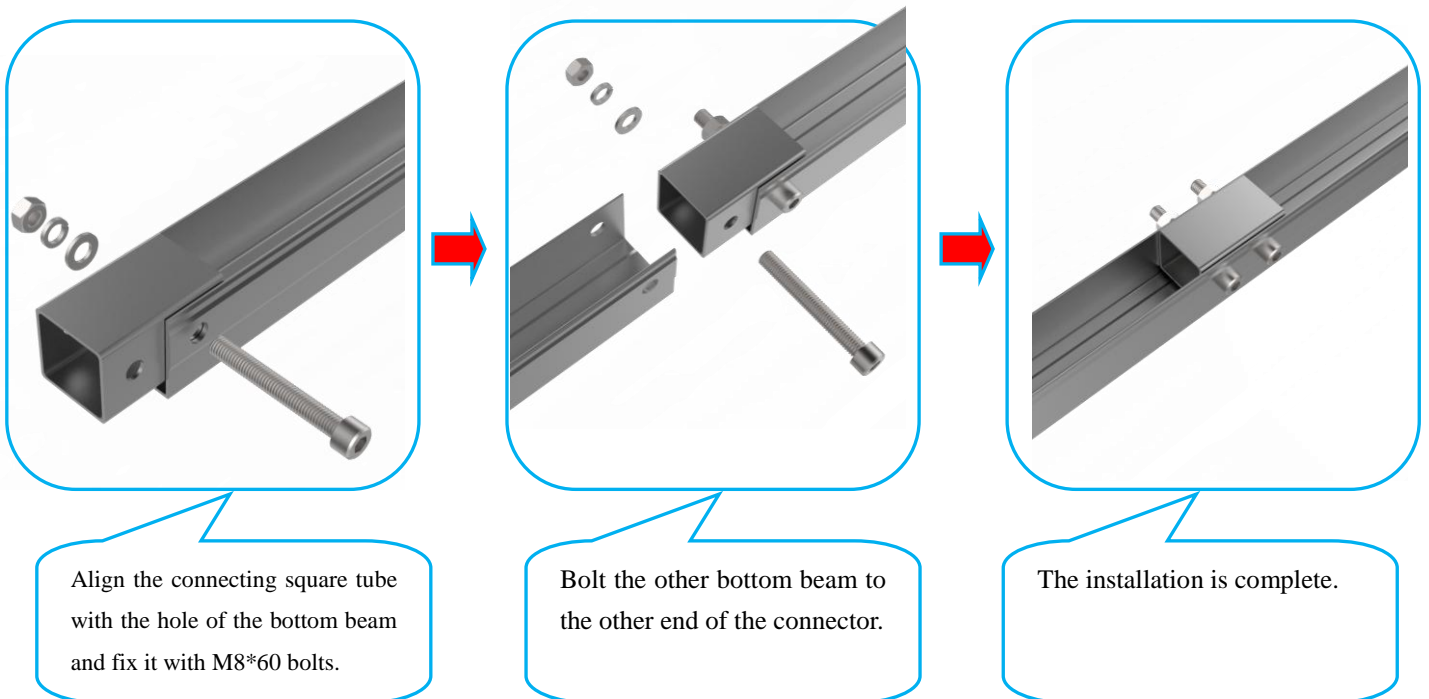
2) Installation of ground clip and end clamp



3) Ground Lug installation.



4) When there are multiple ballast arrays connected in combination, the installation of the front and rear bottom beams of the ballast bracket.



4. Finished product picture display

