



PV SOLAR BALLAST GROUND MOUNTING STRUCTURE

The Valsa Ballast Ground Mounting structure solution provides a quick-install, secure structure for PV Solar panels for ground installations.

It is ideal for a quick deployment of a Ground Mounting Solution for temporary or permanent application for the harvesting of photovoltaic power. It uses ballast blocks with an Aluminium mounting structure. The solution is not invasive. It is available in a portrait or landscape orientation in different tilt angles from 10-40°. The modular design reduces the number of components, is universal and suitable for all size PV Solar panels. Each design is site specific.

The mounting structure meets structural engineering requirements, have been designed and manufactured to International standards, are in line with SANS regulations and is ideally suited for African weather conditions.

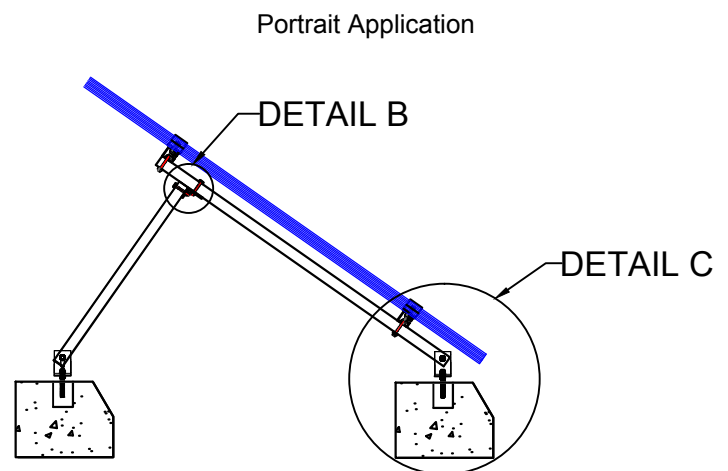
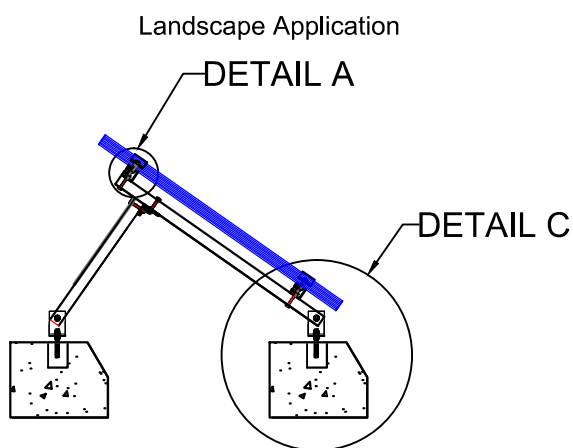
CHARACTERISTICS

Versatility	<ul style="list-style-type: none"> • Standard mounting structure solutions for all site specifics • Flexible design for improved PV Solar performance • Accommodate standard nuts and bolts
Design	<ul style="list-style-type: none"> • Structural engineering compliant • Easy mechanical assembly • High quality material
Flexible	<ul style="list-style-type: none"> • Accommodate customer requirements • Quick and easy to install
Cost effective	<ul style="list-style-type: none"> • Cost-effective PV solar solution
Tools	<ul style="list-style-type: none"> • Standard equipment for all installations
Long life span	<ul style="list-style-type: none"> • Aluminium structure has a long life
Maintenance	<ul style="list-style-type: none"> • Low maintenance
Warranty	<ul style="list-style-type: none"> • 10 years site dependant

SPECIFICATIONS

Material	• Aluminium structure – Alloy 6063
Tilt	• Elevated 10 to 40°
Components	<ul style="list-style-type: none"> • Aluminium components • Stainless-steel fixing components
Panel Orientation	• Portrait or landscape
Certification	• SABS standards and SANS regulations

LINE DRAWINGS



Valsa South Africa
Laser Park, Erf. 115 Battleship Road,
Cnr Boat Turn Road, Honeydew,
Gauteng, 1724, South Africa
Tel +27 (0) 11 794 1306 |
+27 (0) 61 288 2572 | +27 (0) 84 235 5282
E-mail info@valsa.co.za
www.valsa.co.za

Valsa Kenya
Casa Moko Plaza, North Airport Road,
Eastern Bypass, Nairobi
Tel +254 724 919 571
E-mail info@solarworks.co.ke
www.valsa.co.ke

Valsa Zimbabwe
22 Kent Road, Chisipite,
Harare, Zimbabwe
Tel 00263772283889 | 0771539301
E-mail george@valsa.co.zw
www.valsa.co.zw