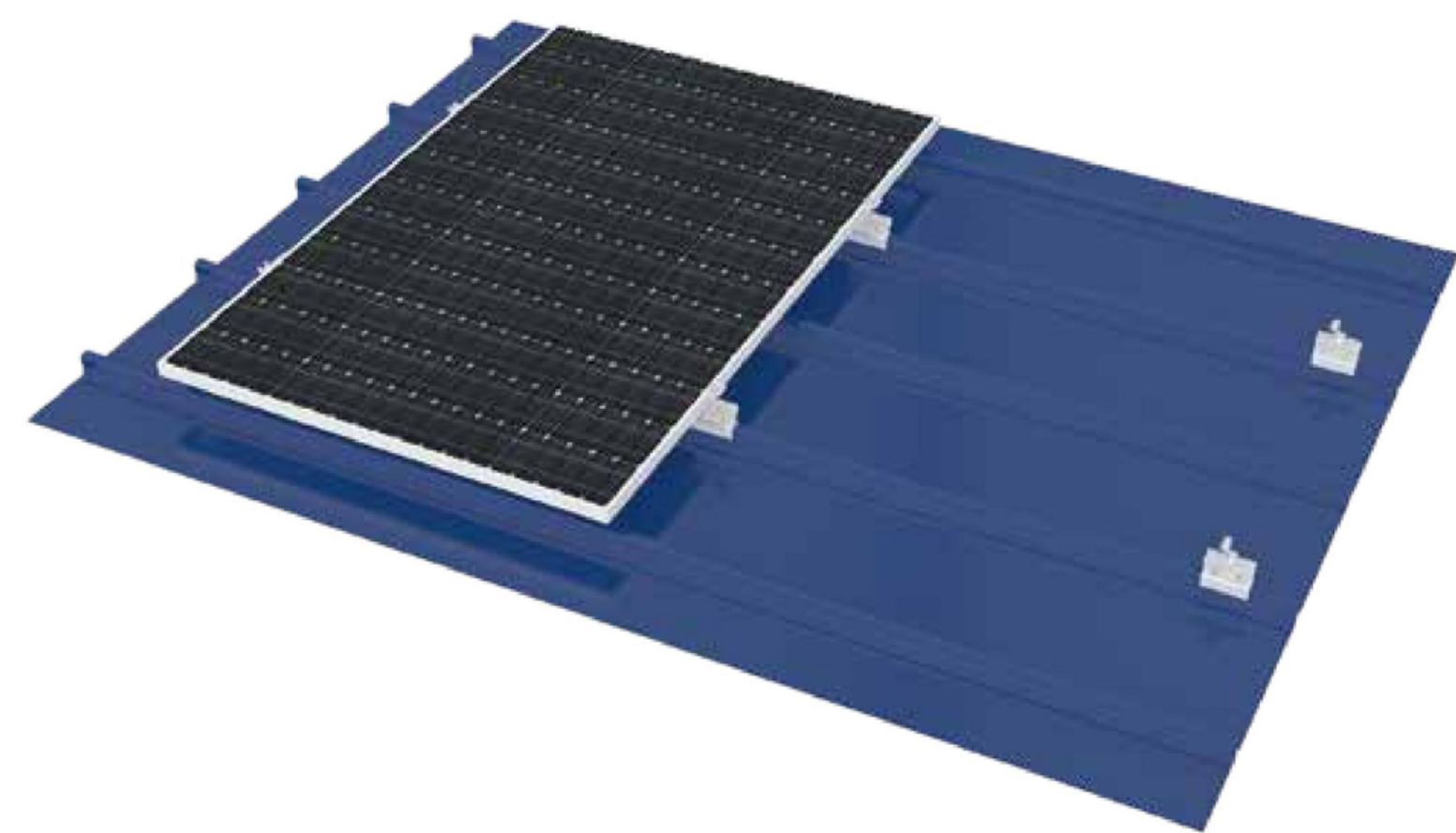


YIJIA

Color steel tile fixture photovoltaic system

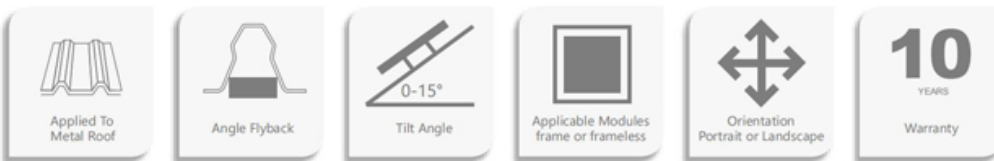


Technical Parameters

System Name	Color steel tile fixture photovoltaic system	Design Standard	AS/NZS 1170, DIN 1055, JIS C8955: 2017
Installation Site	Pitched Roof		International Building Code IBC 2009
Foundation	Trapezoidal Metal Roof Support		California Building Code CBC 2010
Tilt Angle	0-15°	Material	Q235B(Hot-Dip Galvanized) & Al6005-T5(Anodized)
Wind Load	60m/s	Fastener	SUS304&Zinc-Nickel Alloy Electroplated Steel
Snow Load	1.6KN/m²	Small Components	Al6005-T5(Anodized)
Applicable Module	Framed or Frameless	Color	Silver or Customized
Panel Oientation	Portrait or Landscape	Warranty	10 Years

Overview

Mainly applied to photovoltaic system,and its material is Al6005-T5. With its professional design,it can realize the perfect connection between roof support and roof to meet customer installation requirement. Professional solution and structure design can save your installation time and cost. Moreover,Patented and unique design can bring you a good installation experience



Adbantages

- Applicable for different metal roofs
- According to customer requirement,choose different roof mounting system flexibly
- Save installation time and cost
- Save the installation time and cost by offering installation manual and solution
- Compatible with different types of solar modules
- Free and flexible to choose different types of solar modules

Components



End Clamp Kit



Inter Clamp Kit

Applicable kliplok Roof Support



Kliplock 700 Support Kit  
L100



Kliplock 700 Support Kit  
L50



Medium Round Shape Kliplocks  
Support L100



Kliplock longline 305  
Support Kit