



9SUNSOLAR
TECHNOLOGY CO.,LTD



XIAMEN 9SUN SOLAR TECHNOLOGY CO., LTD
Unit 1706, Dingfeng Fortune Center, No.503 Gaolin Middle Rd.,
Huli District, Xiamen, China

Tel: +86 592 550 7880
Fax: +86 592 550 7887
www.9sunsolar.net
www.9sunsolar.com



Version No.: Vol.4/2024.1

- 2 GW Annual Production Capacity of Solar Mounting System.
- The Largest Manufacturer of Solar Mounting System in Fujian Prov.



XIAMEN 9SUN SOLAR TECHNOLOGY CO., LTD

MINFA GROUP

Enterprise profile >>

Fujian Minfa Aluminium INC. is a listed SME Board of Shenzhen Stock Exchange (Stock code: 002578). It is among the Chinese innovating manufacturers that contributed to the basis and creation for the following International/Chinese National Standards:

- GB/T 5237(Wrought aluminium alloy extruded profiles for architecture)
- GB/T 6892(Wrought aluminium alloy extruded profiles for industry)
- International Standard ISO28340 (Wrought aluminium and aluminium alloy complex film)

In addition, Minfa owns a National-level Central Laboratory, Fujian Province Aluminium Profile Spark Industry Technology Innovation Center and Fujian Provincial Enterprise Technology Center, which makes Minfa's technology research and development, product quality, production technology and other aspects in advanced level, and production and testing equipments all represent domestic and world advanced technology.

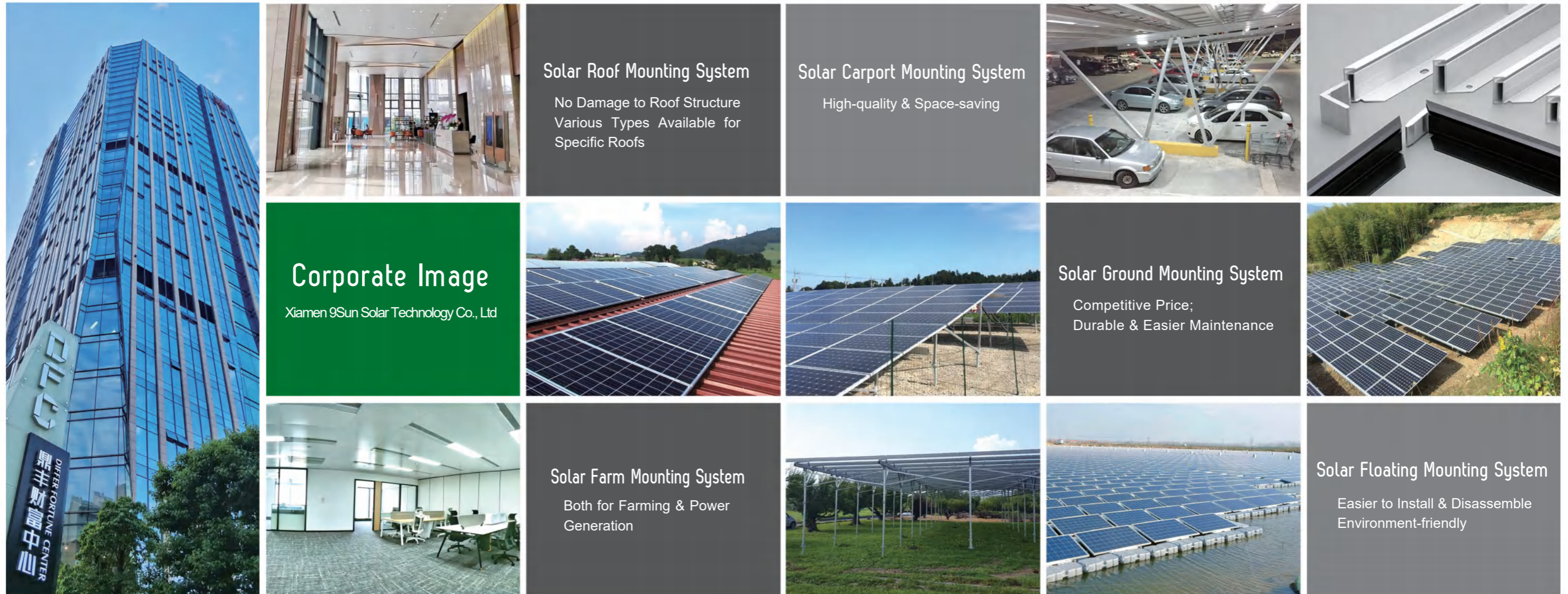
The main products are aluminium alloy architectural profiles, industrial profiles, aluminium formworks, aluminium plates, a series of all-aluminium home and solar mounting system. The main surface treatment methods are anodized colored, electrophoretic coated, powder coated, PVDF coated, thermal break heat insulation, wood pattern transfer printing, high-grade brushing, polishing and dyeing, steel shot blasting and so on. Products have covered large and medium-sized cities across the country and exported to more than 40 countries and regions around the world.



A Minfa Aluminium Meilin Production Center



B Minfa Aluminium Dongtian Production Center



Corporate Image

Xiamen 9Sun Solar Technology Co., Ltd

Solar Roof Mounting System

No Damage to Roof Structure
Various Types Available for Specific Roofs

Solar Carport Mounting System

High-quality & Space-saving

Solar Ground Mounting System

Competitive Price;
Durable & Easier Maintenance

Solar Farm Mounting System

Both for Farming & Power Generation

Solar Floating Mounting System

Easier to Install & Disassemble
Environment-friendly

Xiamen 9Sun Solar Technology Co., Ltd »

Xiamen 9Sun Solar Technology Co., Ltd is located in Xiamen, China's beautiful seaside city, We specialize in design, research and development, producing and sales of solar PV related products. We have an experienced and professional team in research and design of photovoltaic products, persist in the principle of "Quality-oriented"* and "Integrity first", and provide customers with efficient, energy-saving, high-quality products and professional service in a timely manner. A full range of solar mounting systems, including solar ground mounting system, solar roof mounting system, solar farm mounting system, solar carport mounting system, solar floating mounting system, solar ground screw and so on, are provided by 9Sun Solar.

Our own factory locates in Quanzhou, Fujian, with an internationally advanced assembly line and an annual production capacity of solar mounting system as 2.0GW. As one of the chief editor of National Standard Wrought Aluminium and Aluminium Alloys Extruded Profiles, and one of the only seven National Standard Architectural Aluminium Alloy Profile Test and Development Bases, a national lab-oratory and a key high-tech enterprise in the State Torch Plan, our production have been carried out strictly according to GB/T 5237, Japan (JIS), America (AA) and other countries* standards, and enjoy good reputation all over the world.

Company Introduction »

High price-performance ratio, high effectiveness and high reliability are our significant advantages. Thanks to the reduction of inter-mediate links, the prices of our products directly supplied from our own factory are very reasonable; with an experience of over 20 years, our factory is capable of dealing with customized orders. Production at the earliest could be completed within one week after receiving orders, providing customers with fast delivery; we also provide 10 years warranty for solar mounting system, and actual service life as long as 25 years against customer extra worries.

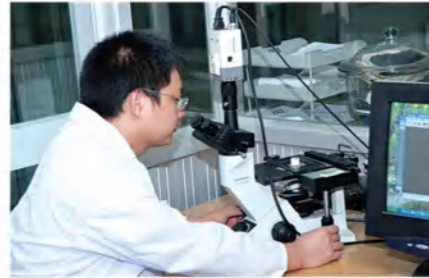
Our vision is [Low Carbon Life, Better World] ,our mission is [Create Value for Customer] . Its widely acknowledged that green energy win be the general trend of future development Adhering to continuous technological innovation and business development, our company is committed to acting as the trustworthy partner for solar photovoltaic mounting system solutions for domestic and foreign customers, and makes more contributions to popularization of green energy and global sustainable development.

National Physical and Chemical Testing Center Chief Editor of the National Standard of Aluminium Alloy Industry >>

The company has a National-level Architectural Aluminium Profile Central Laboratory and a Provincial-level Enterprise Technology Center. Minfa is one of the only seven National Standard Architectural Aluminium Alloy Profile Test and Development Bases. It has always been committed to the design and development of various types of aluminium profiles, and now standing in a leading position in the processing technology of aluminium and aluminium alloy architectural profiles.



MCU Controlled Electronic Universal Stretching Machine



Japan OLYPUS Metallographic Microscope



Jet Tester



American PANEL Xenon Weathering Tester



Compound Salt Spray Test Machine



US QUV Fluorescent UV Light Weathering Tester



Corrosion Resistance Potentiometer



American ARUN Desktop DIR Spectrometer

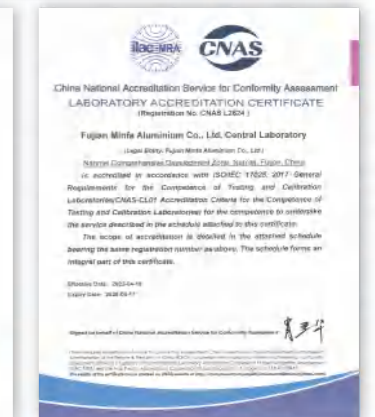
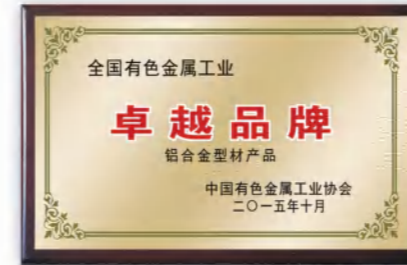


Israel Lemitte Profile Scanner



High and Low Temperature Cycle Test Machine

Main Certification and Honor >>





A Central Laboratory Inspection



B CNC Machining Center

Fujian Minfa Aluminium Inc. covers a floor space over 500,000 square metres, with over 40 leading Aluminium Alloys Extruding lines.



F Automatic Formwork Manufacturing Center



C Full-automatic Vertical Anodization Workshop



D PVDF Coated Workshop



G Vertical Powder Coated Workshop



H Domestic Leading Full-automatic Extruding Assembly Line

Manufacturing Equipment
Production Equipment >>



E Intelligent Robot Operation

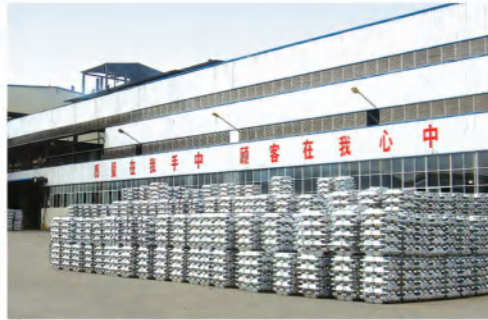
Advanced Technique
Leading Technology
Standardized Management
Well-developed Inspection



I Full-automatic Vertical Storage



○ Design



○ Superior Aluminium Ingot



○ Further Processing



○ Inspection



○ Packaging



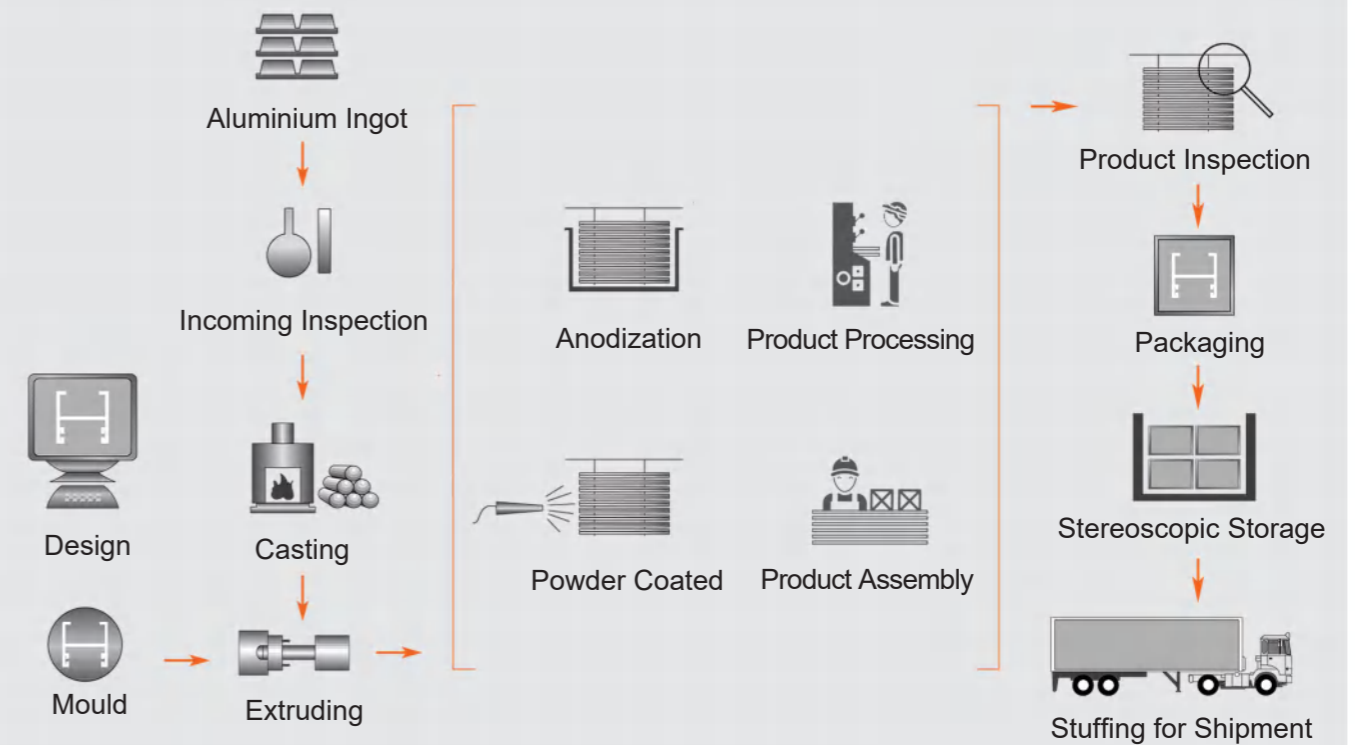
○ Storage

Fujian Minfa Aluminium Inc. has a modern management system, advanced assembly lines, full testing methods, high-quality scientific and technical personnel, mature manufacturing technique and well-developed quality assurance system, which bring excellent product quality.

Process Procedure Production process >>

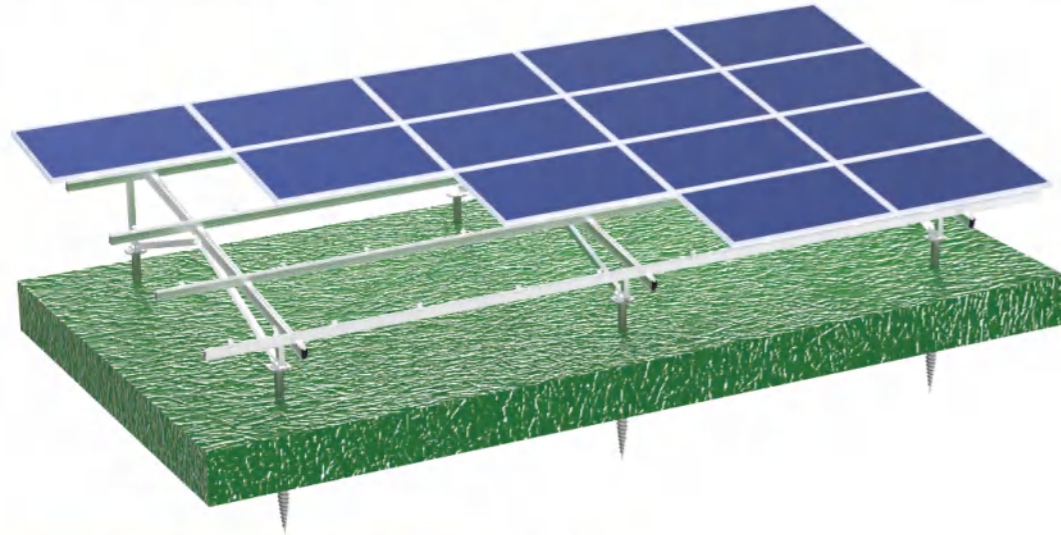


○ Full-automatic Assembly Line

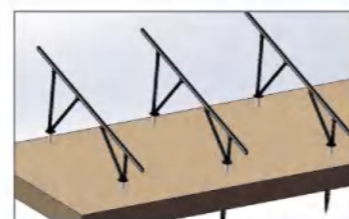
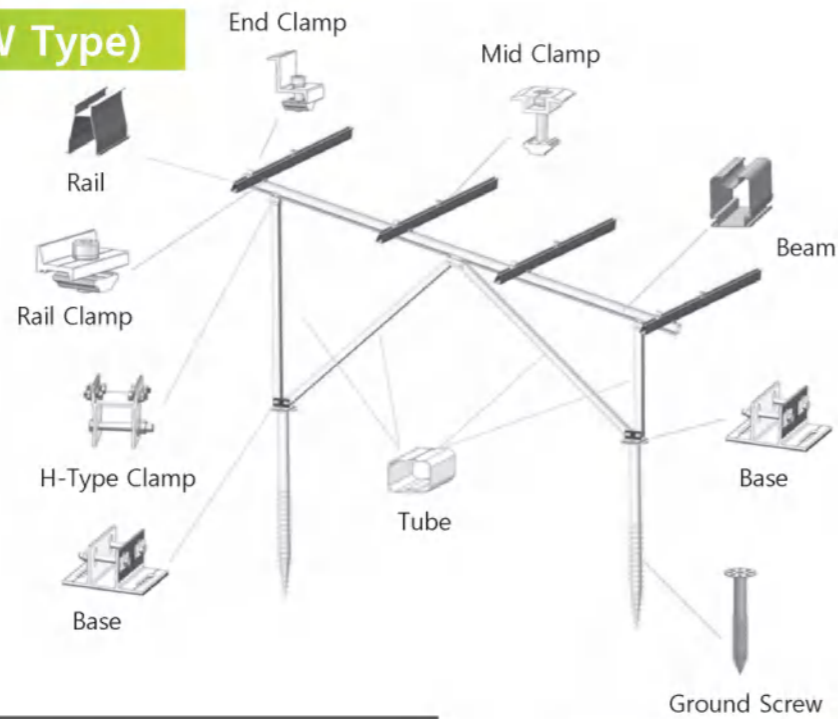


>> Solar Ground Mounting System

■ Maximize the use of aluminum material's advantages of light, and 90% of the assembly in the factory, simple construction, to shorten the period of contribution. After anodized surface treatment, strong corrosion resistance, clean appearance, not easy to stain, with good maintenance.



Indicator Diagram(W Type)



Main Material :	AL6005-T5 (Anodised)
Fixed Base :	Ground Screw / Concrete
Design Wind Load :	60m/s
Design Snow Load :	1.4Kn/m ²
Module Specification :	Unlimited

>> Solar Ground Mounting System

Different Types



● A



● N



● WV



● W



● Multistage column

Profile Type

Beam



Rail

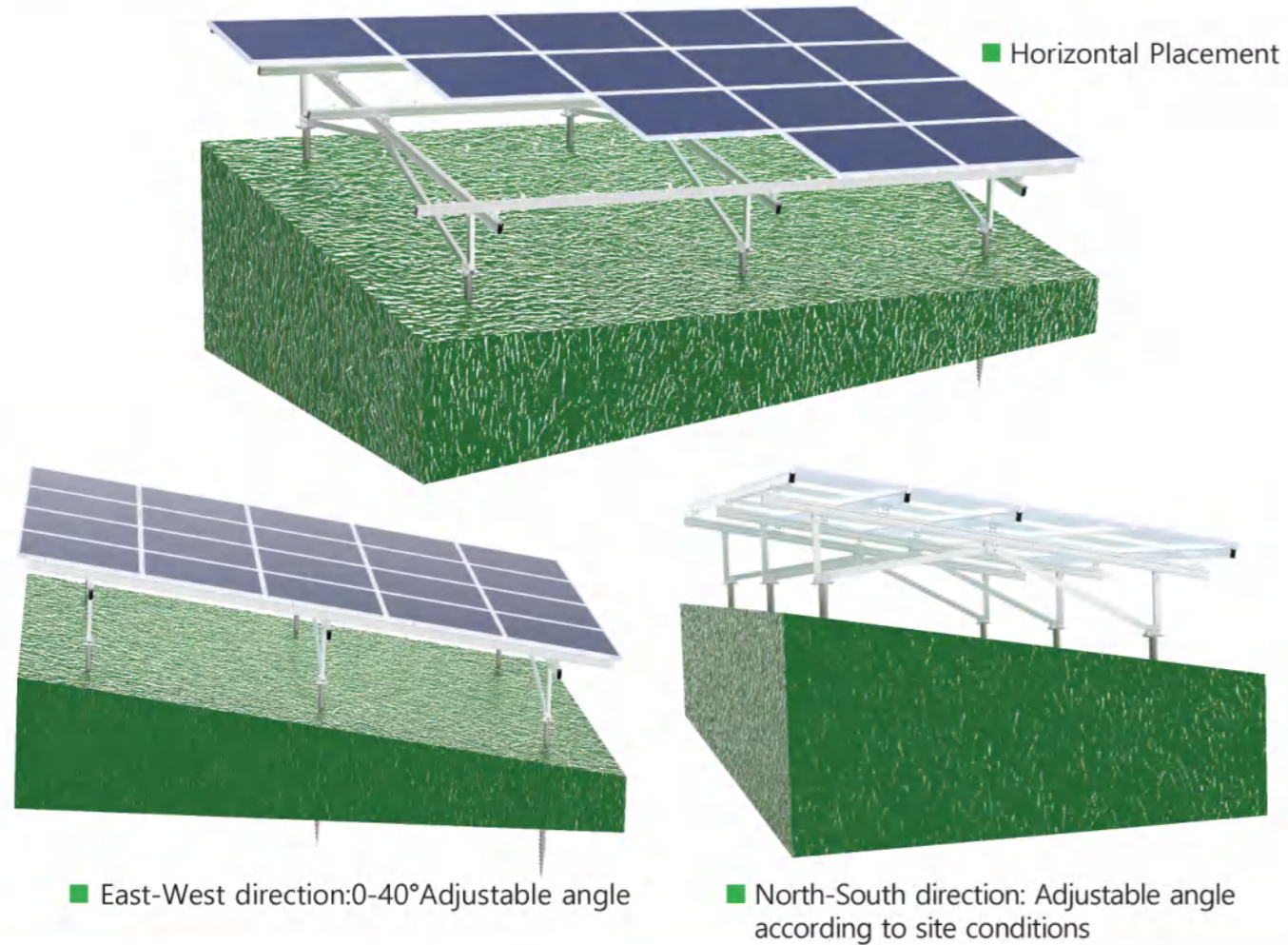


Tube

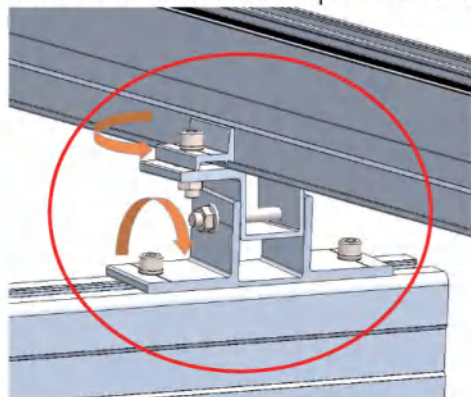


■ Depending on the case, we can provide the profiles you need or recommend suitable profiles for you.

>> Solar Ground Mounting System



■ Suitable for all kinds of slopes.
No land rectification is required at the installation site, so as to reduce construction period and cost.

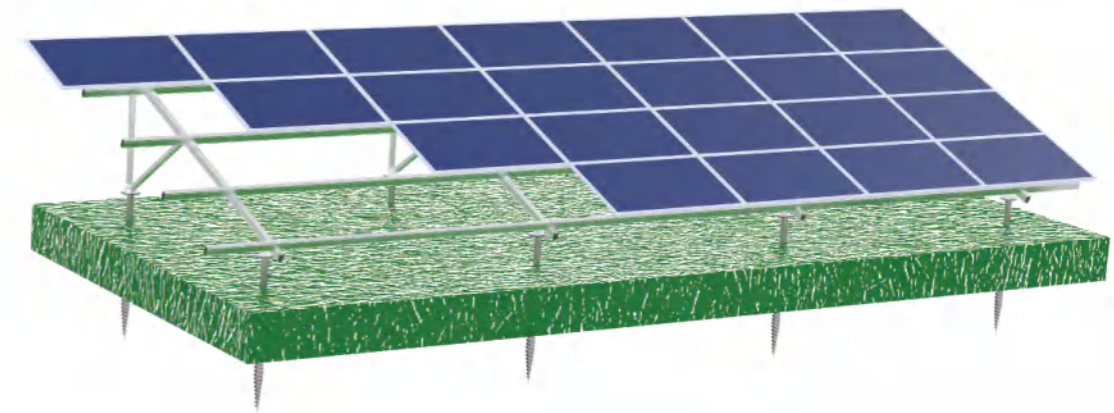


● NS-GA-R01

Under different circumstances, rails can be adjusted in the range of 0-45 degrees with the help of components.

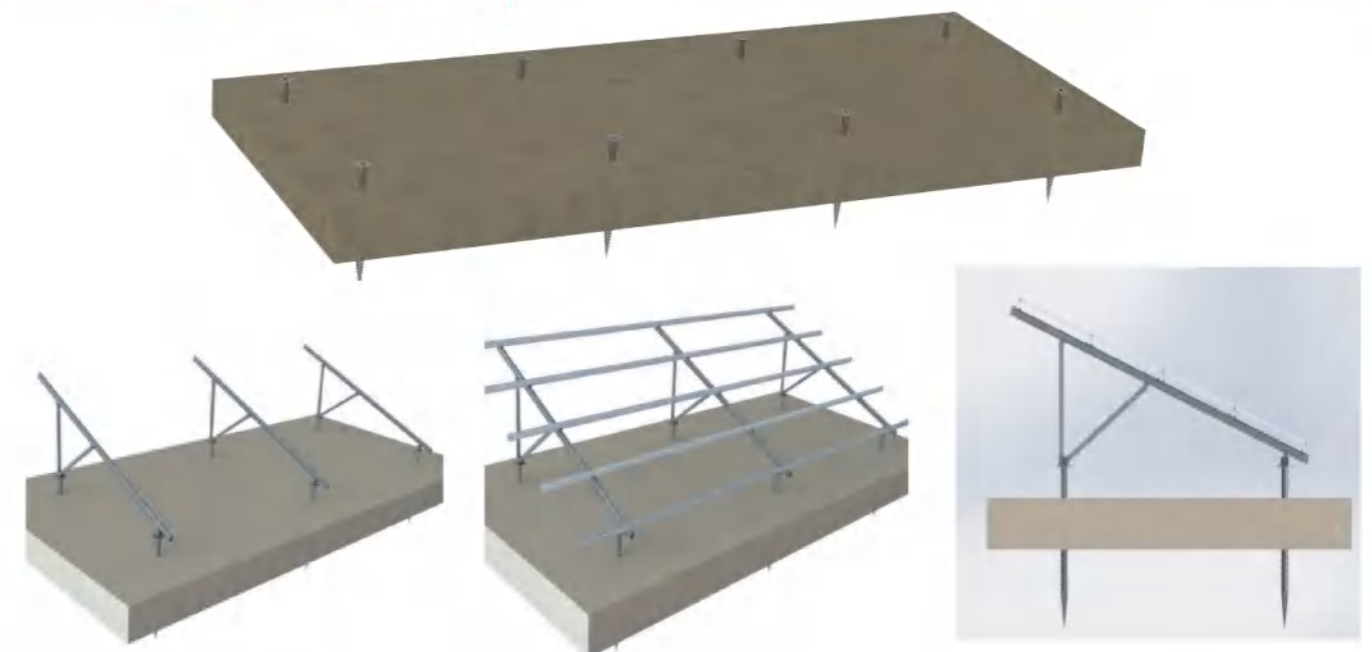
>> Solar Ground Mounting System

■ The use of fixtures under the solar panel can be easily constructed to ensure the safety of operators. Moreover, because there is no protrusion, the snow on the surface of the panel becomes easy to slide, the power generation efficiency will not decline, excellent maintenance, also suitable for areas with thick snow.



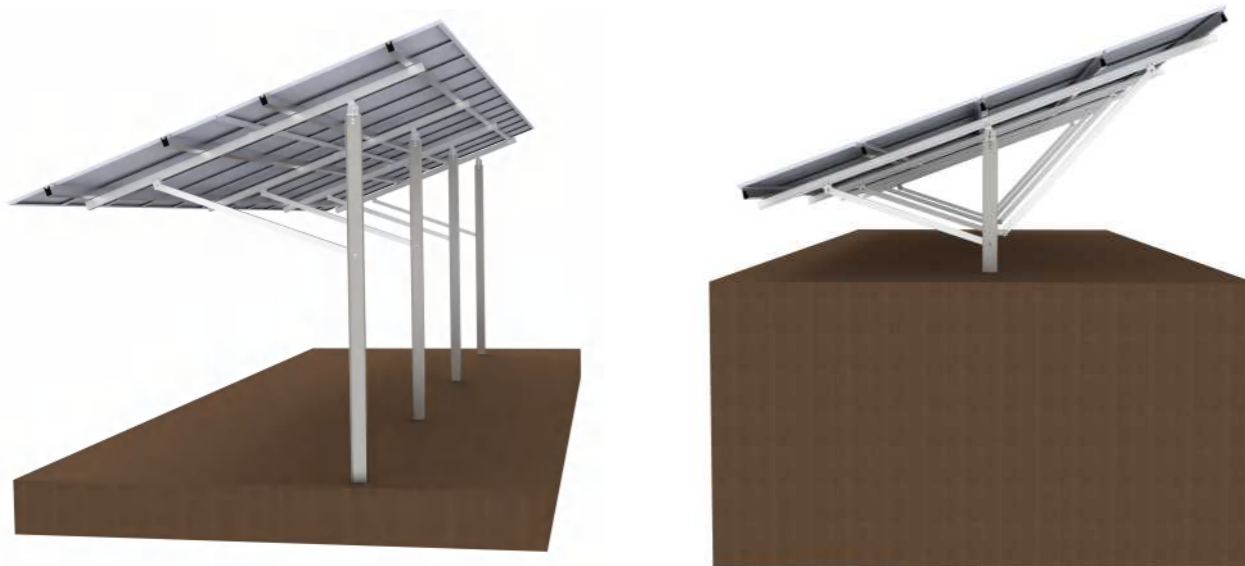
Main Material :	AL6005-T5 (Anodised)
Fixed Base :	Ground Screw / Concrete
Design Wind Load :	46m/s
Design Snow Load :	1.4Kn/m ²
Module Specification :	Frame

Work Progress (A Type)

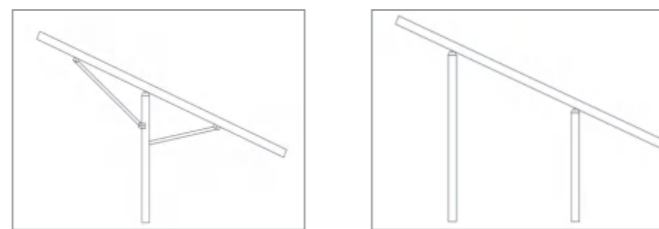
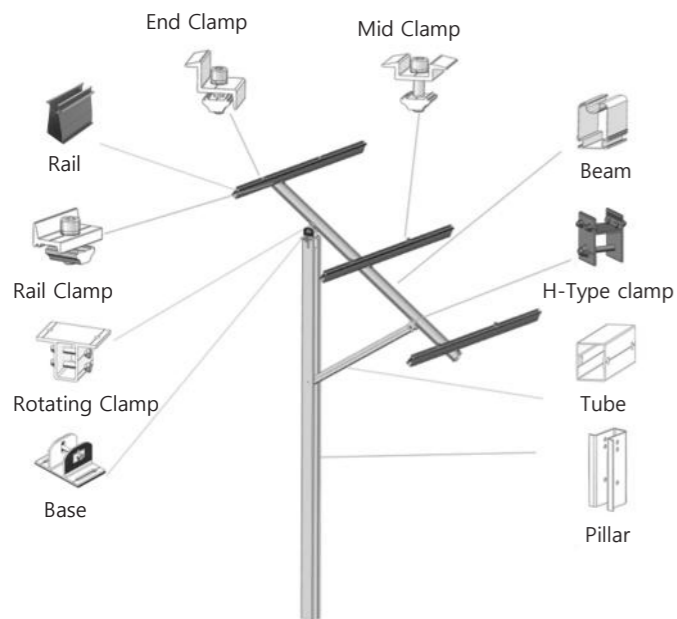


>> C Type Pillar System

■ It is used in the system of undulating ground, soft foundation and other site conditions. The use of strong corrosion resistance, high strength steel post, excellent durability. The monolithic pillar can reduce man-hours and greatly reduce construction costs.



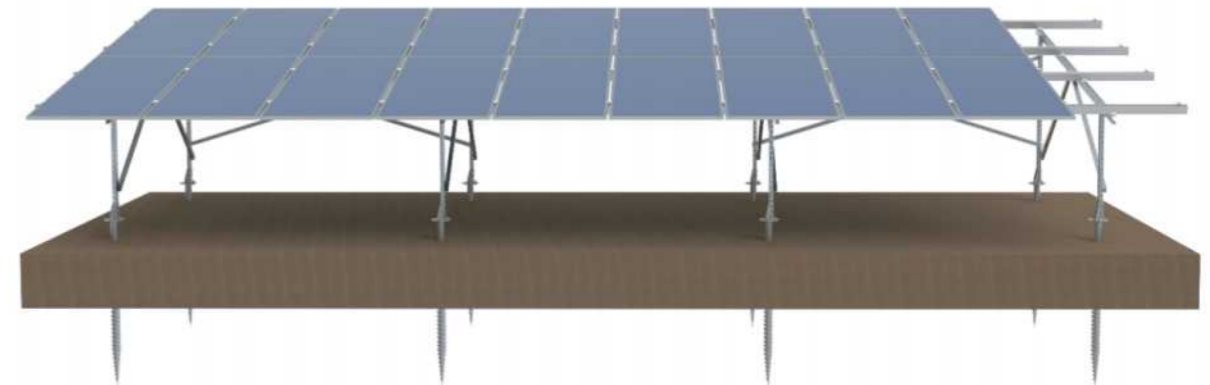
Indicator Diagram



● One foot type	● Bipedal type
Pillar Material :	Q235B (Galvanized)
Bracket Material :	AL6005-T5 (Anodised)
Fixed Base :	C Type Pillar , Pile
Design Wind Load :	46m/s
Design Snow Load :	1.4Kn/m ²

>> ZAM(Zn-Al-Mg) System

■ Zn-al-mg steel refers to galvanized steel plate with zinc, aluminum and magnesium coating. ZAM has excellent corrosion resistance, 10-20 times higher than galvanized steel.



Side View

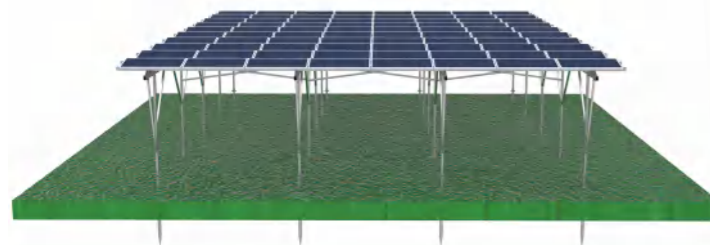


Main Material :	Zn-Al-Mg Q355
Component Material :	AL6005-T5 (Anodised)
Design Wind Load :	46m/s
Design Snow Load :	1.4Kn/m ²

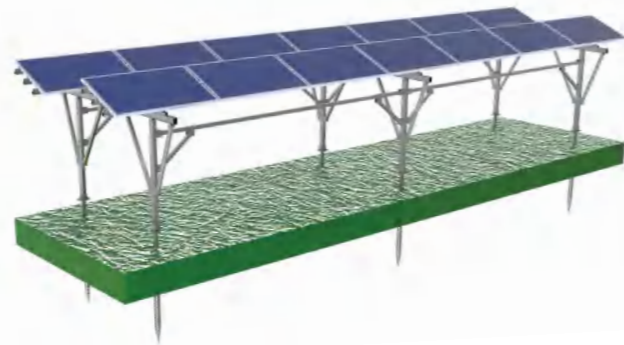
>> Solar Farm System

■ Set the brackets like a pergola and place solar panels at intervals on them. The advantage is that the gaps between the panels are relatively empty, allowing the sunlight to reach the crops on the ground evenly and ensuring adequate working space even under the panels.

Pergola-Type 1



● 3.5 meters above the ground



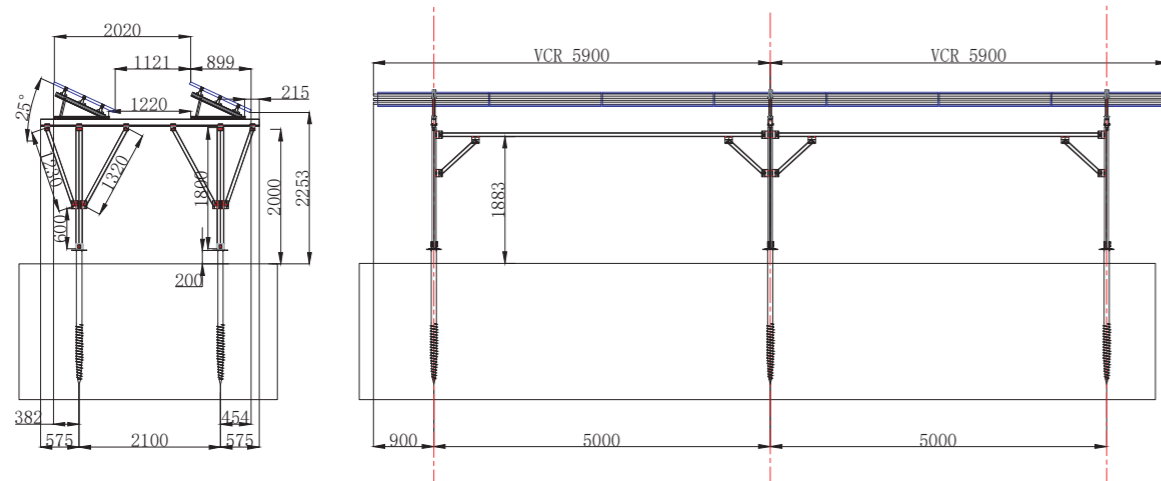
● The maximum spacing can reach 5 meters

Feature :

■ The height of the array surface and stand ensures sufficient height (operating space for large agricultural machinery) without affecting farming below. Make the cracks in the panels wide enough to allow sunlight to reach the crops and Make the cracks in the panels wide enough to allow sunlight to reach the crops and ensure an equal amount of sunlight to the fields. The problem of unequal crop growth can be avoided.

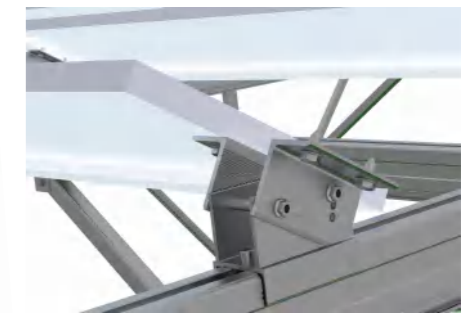
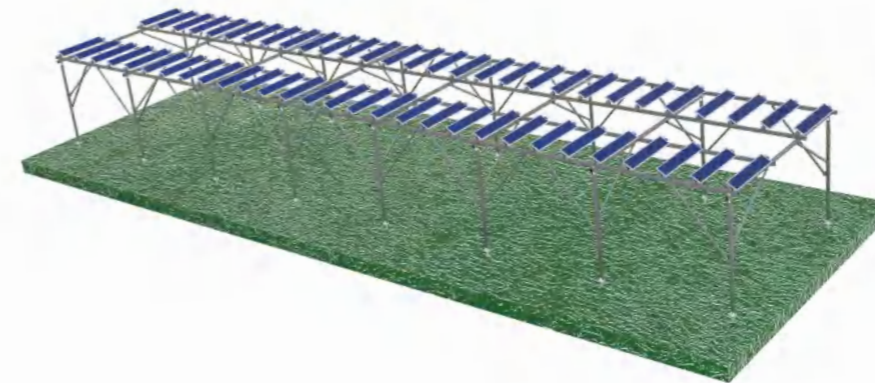
Fixed Base :	Ground Screw / Concrete
Module Specification :	Unlimited
Design Wind Load :	46m/s
Design Snow Load :	<100cm
Clearance :	5m (maximum value)
Suitable Crop :	Rice, Tea, Blueberries etc

Design and illustration:



>> Solar Farm System

Pergola-Type 2



● Using the module frame, install bolts from the bottom

Feature :

■ Small solar panels can avoid damage from strong winds and minimize damage from raindrops to cultivated land. The two aluminum frames on the back of the panel are made of unique metal parts that were not available before, and the panel is fixed directly with drill screws, making it easy to install.

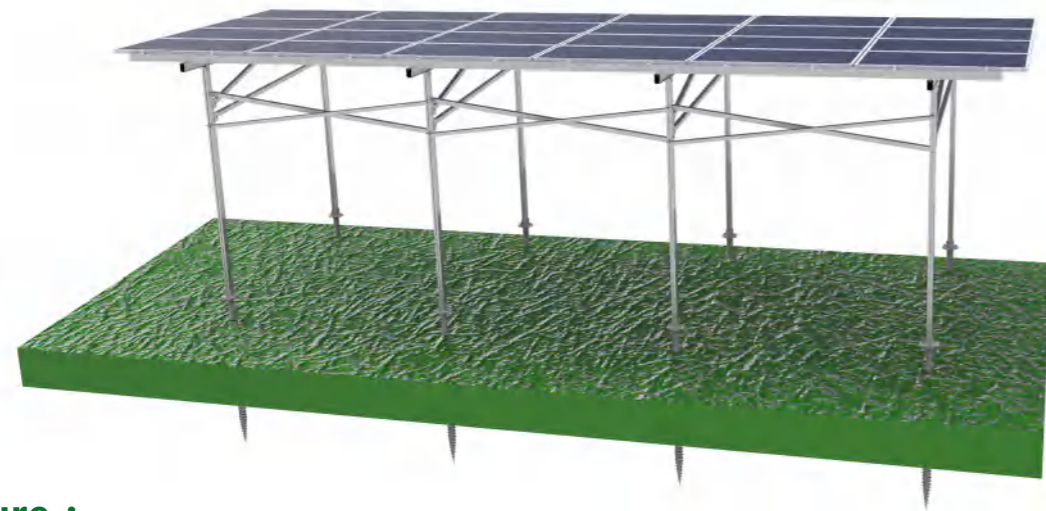
Fixed Base :	Ground Screw / Concrete
Module Specification :	Minitype module (width up to 359 mm)
Design Wind Load :	46m/s
Design Snow Load :	<100cm
Clearance :	5m (maximum value)
Suitable Crop :	Rice, Tea, Blueberries etc

>> Construction Case



>> Solar Farm System

■ Solar sharing and solar greenhouses are new forms of agriculture that use farmland for solar power while continuing farming.

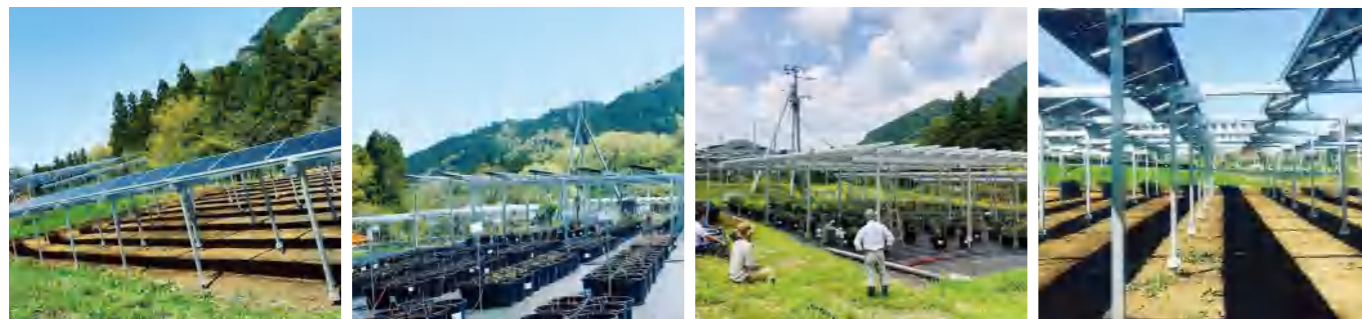


Feature :

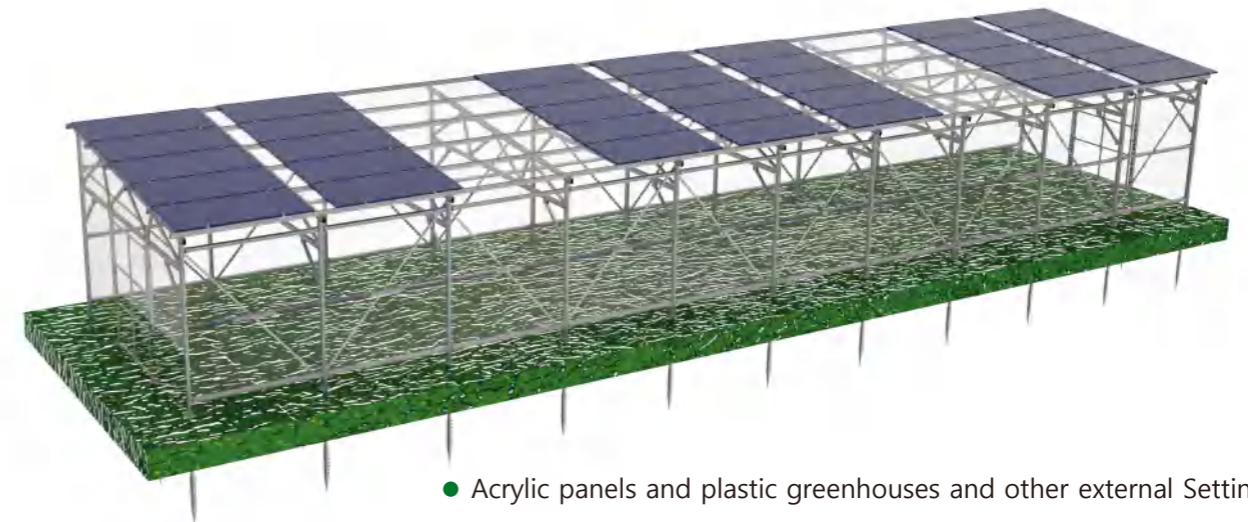
■ This is the generic shape of the bracket that you see in solar power plants in the wild. Multiple solar panels are mounted on brackets, which are then placed side by side in a field. Because the design can be converted to ordinary solar power generation equipment, it is possible to install at low cost. Compared with the pergola type, the shading rate tends to be higher.

Fixed Base :	Ground Screw / Concrete
Module Specification :	Unlimited
Design Wind Load :	46m/s
Design Snow Load :	<100cm
Clearance :	5m (maximum value)
Suitable Crop :	Crop with shading rate of 90%

>> Construction Case



>> Solar Farm System - Solar green house



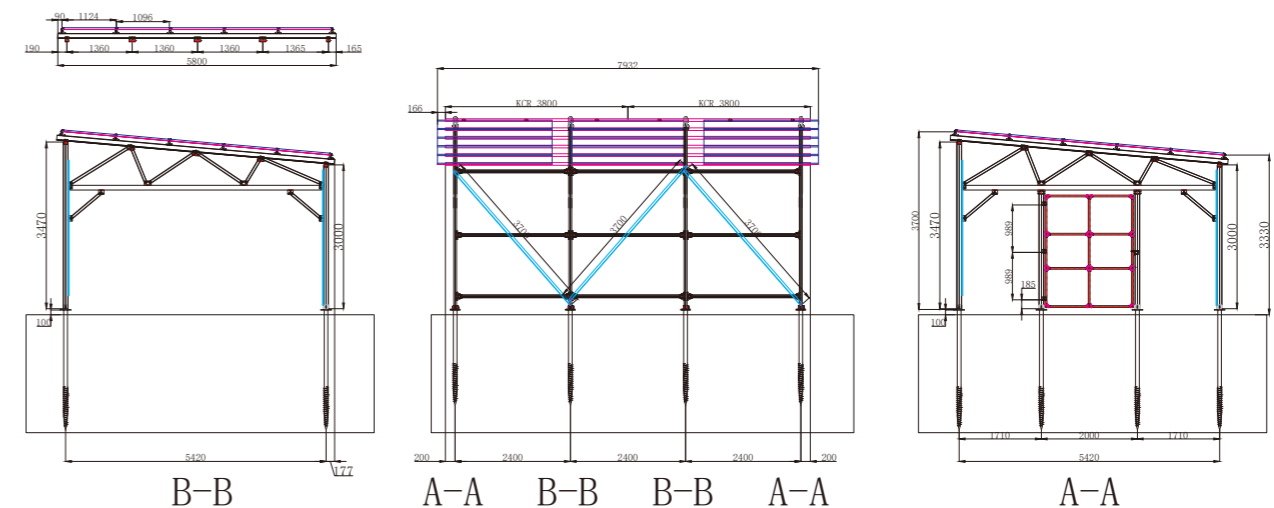
● Acrylic panels and plastic greenhouses and other external Settings

Feature :

■ By placing solar modules on the roof, a steady income can be ensured. Cultivar and size specifications, shell specifications, shading specifications can be customized at design time.

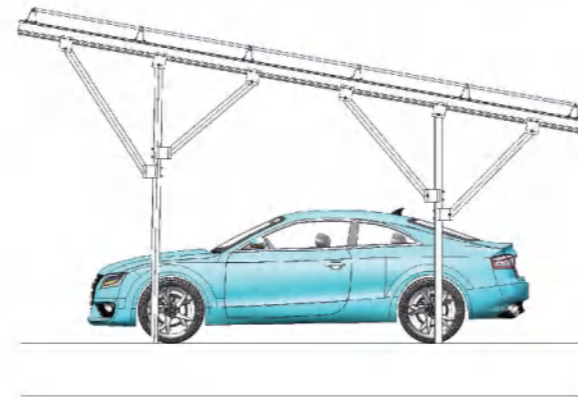
Fixed Base :	Ground Screw / Concrete
Module Specification :	Unlimited
Design Wind Load :	40m/s
Design Snow Load :	<60cm
Suitable Crop :	Greenhouse Crops

Design and illustration:



>> Carport-YY Type

- Effective use of limited space, both parking and power generation, on the basis of the usual specifications and prevention from water leakage.



Specification

Materials	Main Frame and Fitting Clamps: Aluminum alloy A6005-T5- Anodized Bolts and Nuts: Stainless Steel SUS304
Roofing	PV Module/ Sheet Metal
Waterproofing	Sheet Metal/Drainage Rail
Span	≤ 5600mm
Ground Clearance	2500mm
Color	Silver
Wind	≤ 50m/s
Snow	≤ 150 cm
Tilt Angle	≤ 30 degrees

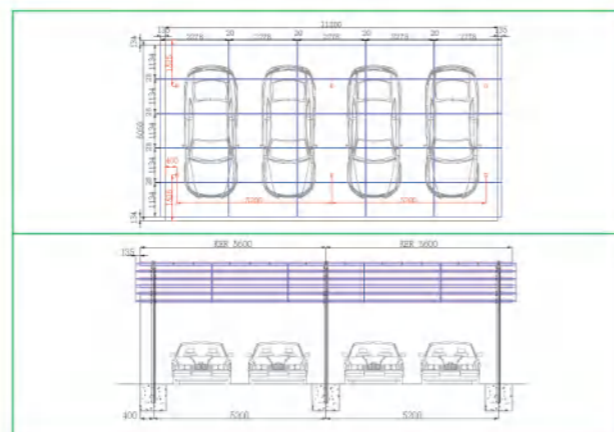
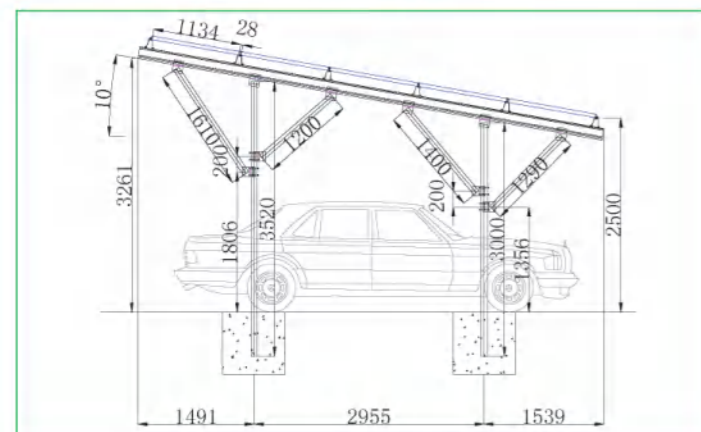


Simple 4-posts for easy parking and getting in and out of the car.

- 1. Gutters, decorative frames, and PCS mounting materials are optional items.
- 2. Products can be customized to suit the installation environment.

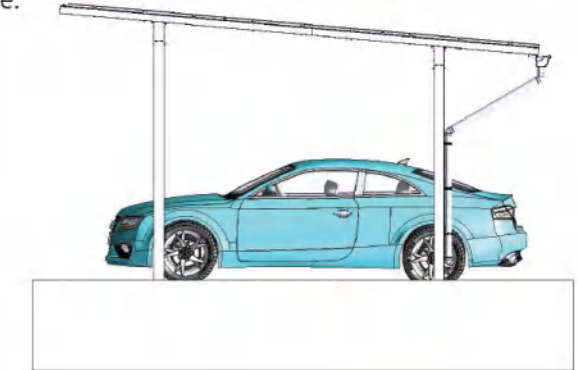
We can also adjust the angle, custom color coating, pole position, and length of the pole. Please contact us for details.

>> Design Drawing



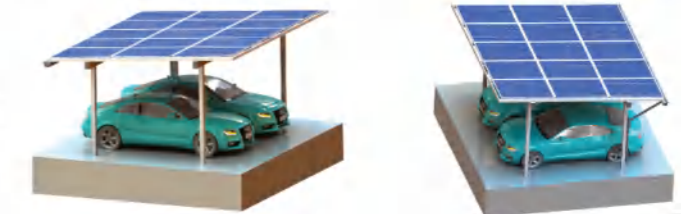
>> Carport-II Type

- Aluminum alloy is adopted, which has strong rust resistance, and the film thickness is more than 10μm for anodic oxidation to achieve high corrosion resistance.



Specification

Materials	Main Frame and Fitting Clamps: Aluminum alloy A6005-T5- Anodized Bolts and Nuts: Stainless Steel SUS304
Roofing	PV Module/ Sheet Metal
Waterproofing	Sheet Metal/Drainage Rail
Span	≤ 5600mm
Ground Clearance	2500mm
Color	Silver
Wind	≤ 50m/s
Snow	≤ 150 cm
Tilt Angle	≤ 30 degrees

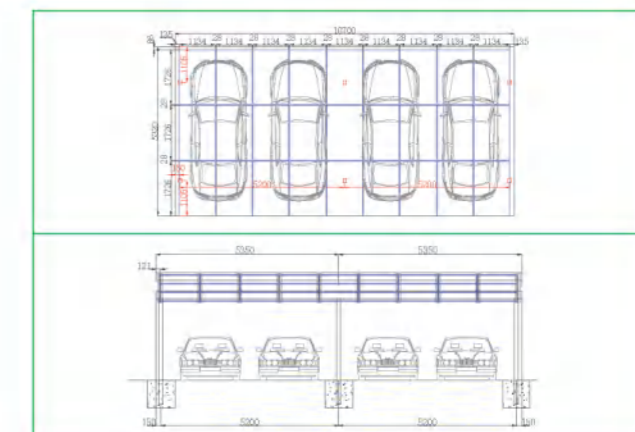
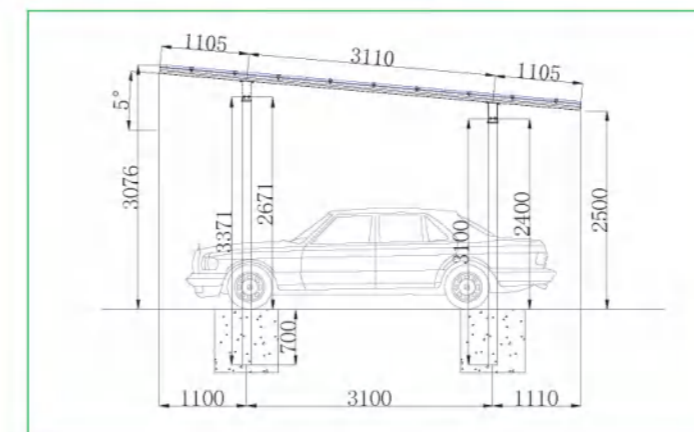


Panel backstopping method eliminates the need for scaffolding and ensures safe construction

- 1. Gutters, decorative frames, and PCS mounting materials are optional items.
- 2. Products can be customized to suit the installation environment.

We can also adjust the angle, custom color coating, pole position, and length of the pole. Please contact us for details.

>> Design Drawing



>> Carport- T Type

- The pillars are concentrated at the back, which will not be an obstacle and will go up and down smoothly. It can deal with a variety of vehicles.



Easy to open and close doors.

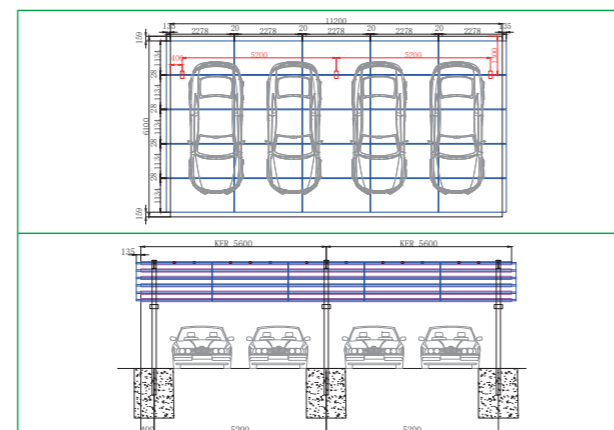
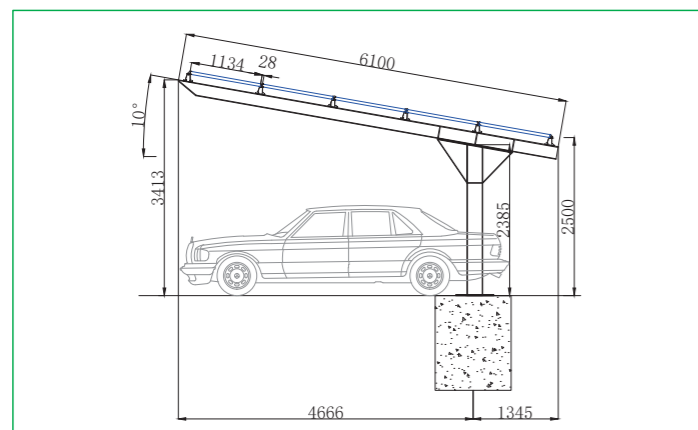
Specification

Materials	Main Frame and Fitting Clamps: Aluminum alloy A6005-T5- Anodized Bolts and Nuts: Stainless Steel SUS304
Roofing	PV Module/ Sheet Metal
Waterproofing	Sheet Metal/Drainage Rail
Span	≤ 5600mm
Ground Clearance	2500mm
Color	Silver
Wind	≤ 50m/s
Snow	≤ 150 cm
Tilt Angle	≤ 30 degrees

- 1.Gutters, decorative frames, and PCS mounting materials are optional items.
- 2.Products can be tailor-made and customized to suit the installation environment.

We can also adjust the angle, custom color coating, pole position, and length of the pole. Please contact us for details.

>> Design Drawing



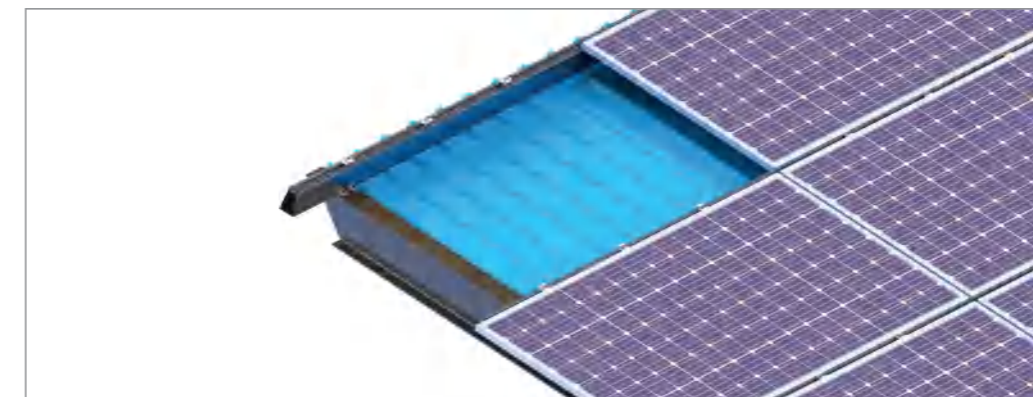
>> Solar Carport

Waterproof Countermeasures

- Drainage Rail**
Drainage rails between panels can drain rainwater away to protect cars and people under it.



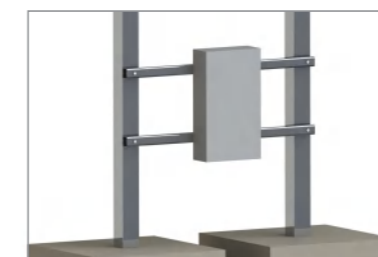
- Sheet Metal Roof**
Regardless of the module layout, the sheet metal roof can be flexibly set. By adopting the sheet metal roof, the durability is greatly improved.



Please contact us for details of options.



Drainage Rail Components



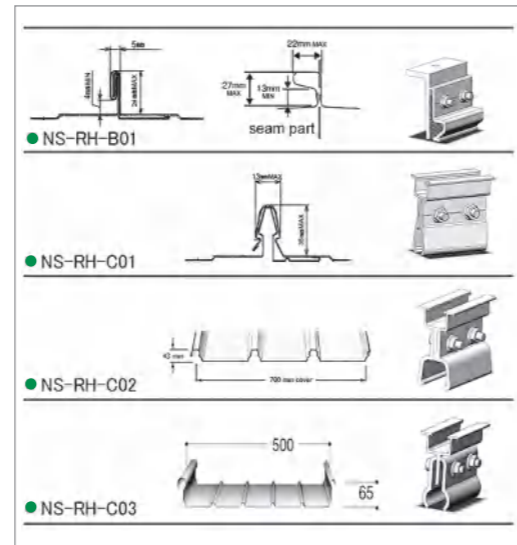
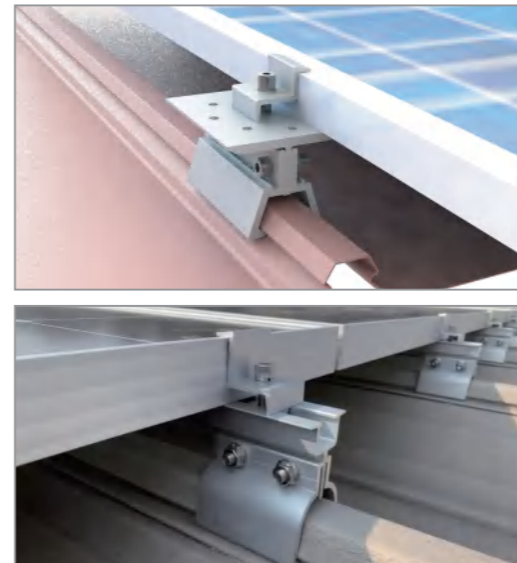
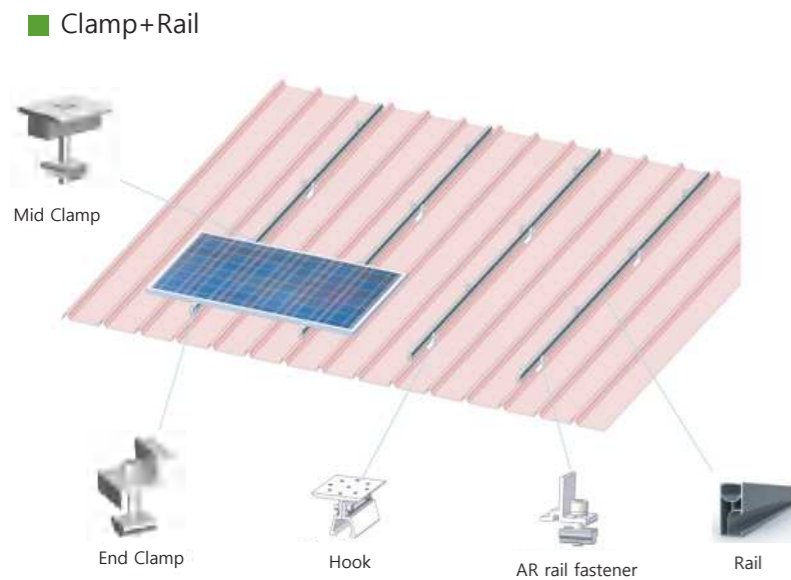
PCS Installation Material



Decorative Frame

>> Metal Roof (Tin Roof) Mounting System

■ Clamp+Rail



Feature:

- Panels are fixed with clamps that match with the condition of the roof, working dimensions, and cleats. The panels are light-weight and can be installed simply by covering the roof, making installation simple, cost-effective.

Rails

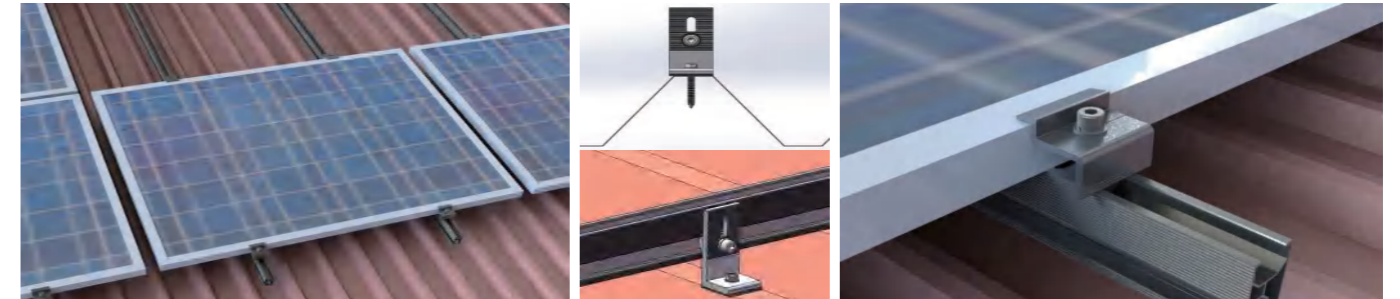


Roof Clamps



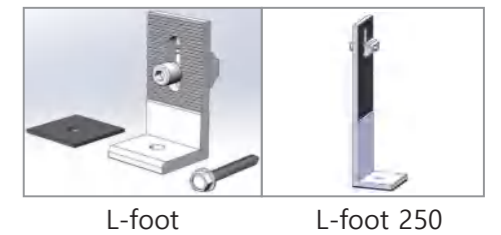
- The photo includes only a partial excerpt, we will suggest the most suitable one for your roof shape.

>> Metal Roof (Tin Roof) Mounting System- L-foot+Rail

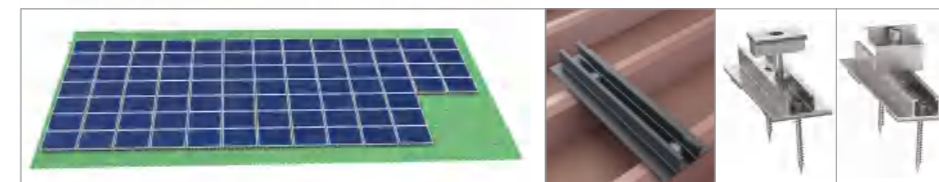


Feature:

- The L-foot can be adjusted vertically in the long hole, so panels can be fine-tuned to keep them on the same level surface on non-flat roofs. It can be widely adapted to roofs of various shapes. Easy and simple installation and good adaptability are advantages.



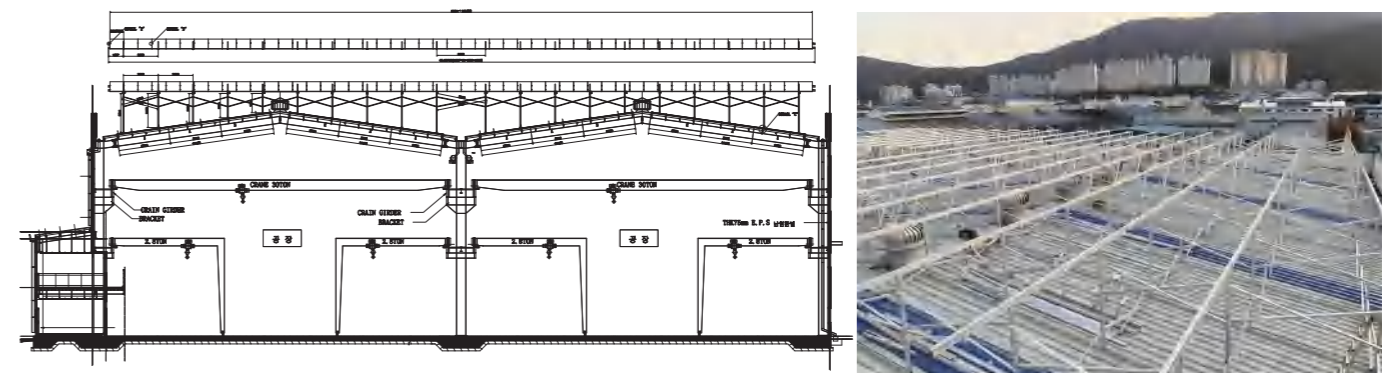
Mini Rail



Feature:

- It is cost-effective because modules can be fixed without using long rails.

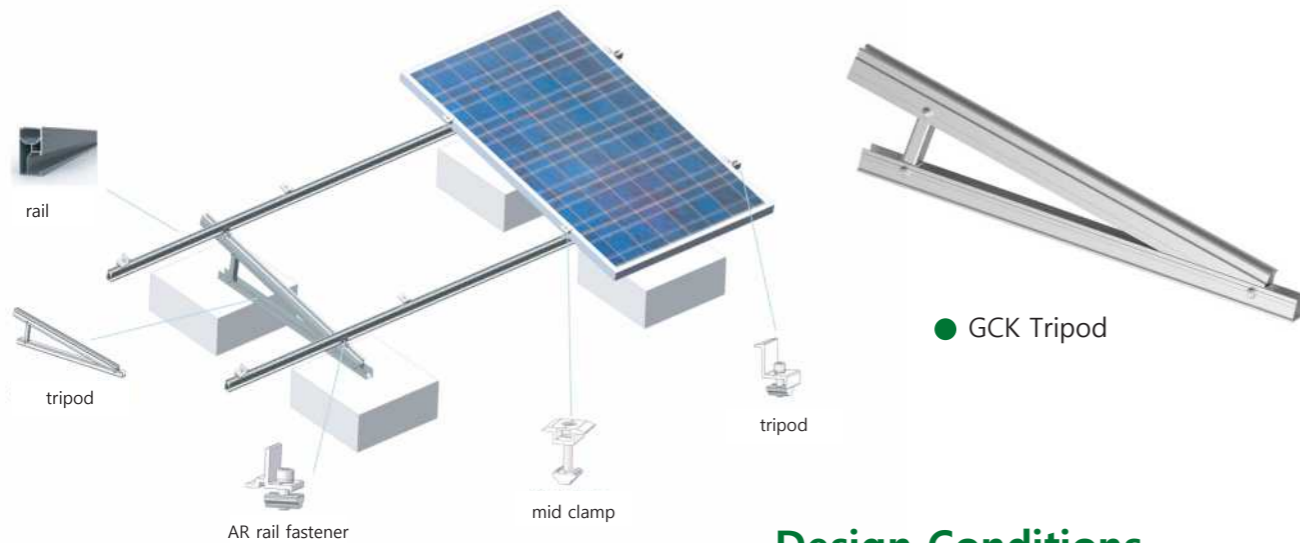
Korean Solar Height Mounting System



Feature:

- The height of mounting system can efficiently increase power generation on roofs with low power generation efficiency. Customization is possible according to the slope angle of the building (roof).

>> Tripod Mounting System



● GCK Tripod

Design Conditions

Base:	Ground/Cement Roof
Material:	Al6005-t5
Wind Load:	46m/s
Snow Load:	1.4KN/m ²
Module Specification:	Unlimited
Quality Assurance:	10 years

Feature:

- There is no limit to the construction site, ground and that can be used. You don't have to punch holes in the roof and don't have to worry about leaks.

Tilting Mounting System



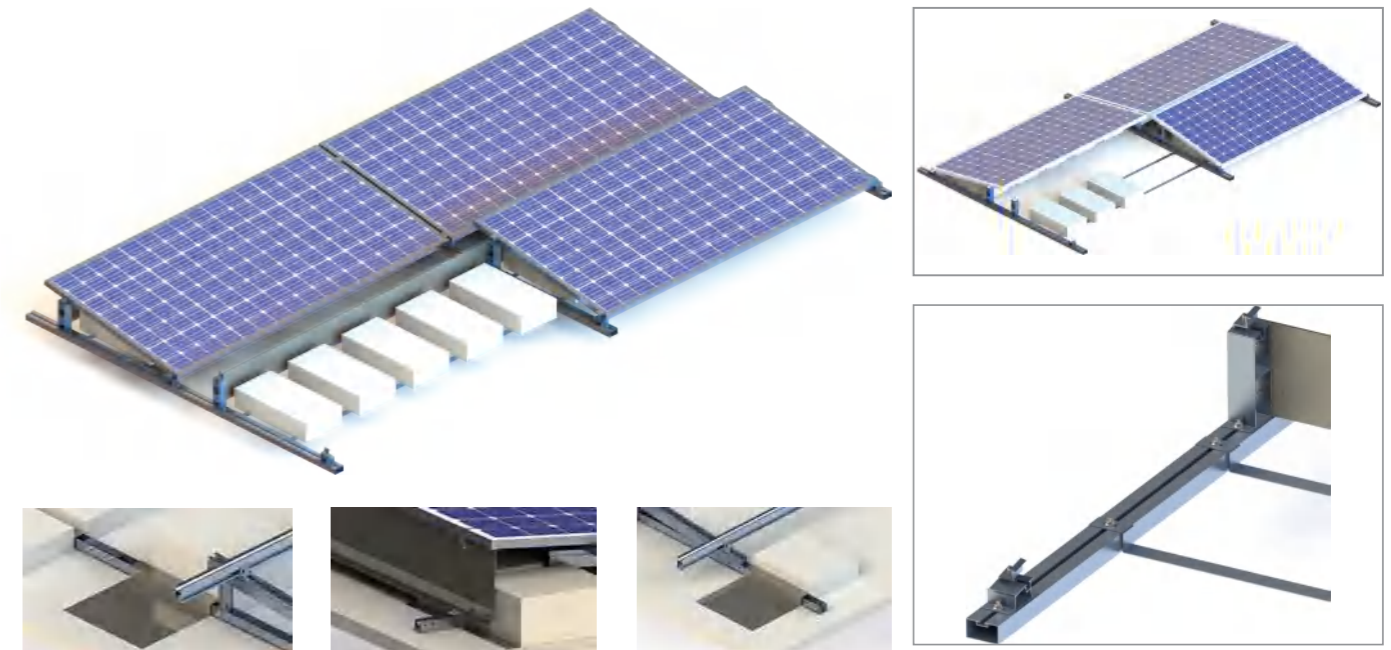
4-leg



with rails



>> Flat Roof Mounting System- Ballast System



Feature:

- Ballast mounting systems are generally used on flat roofs. Ballast mounting system uses heavy objects to fix. This system is low-cost, easy to install, and does not destroy the roof.

>> Tile Roof Mounting System



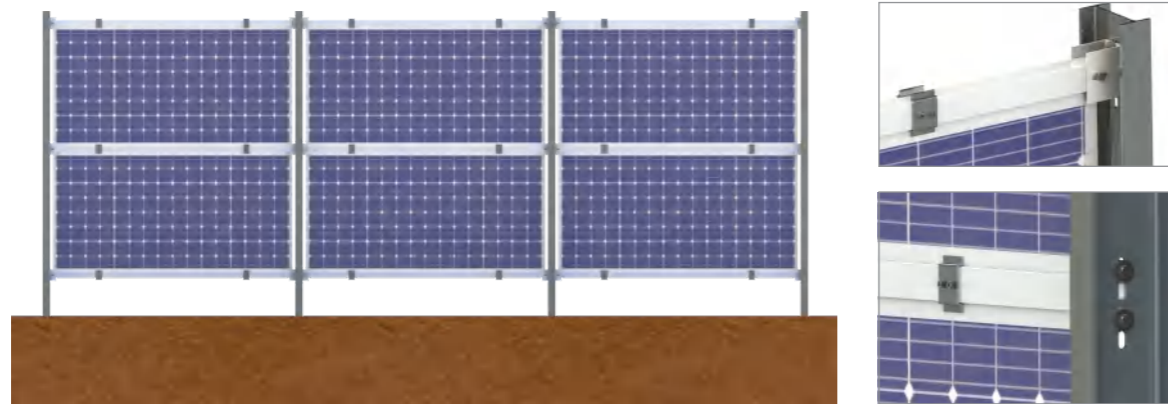
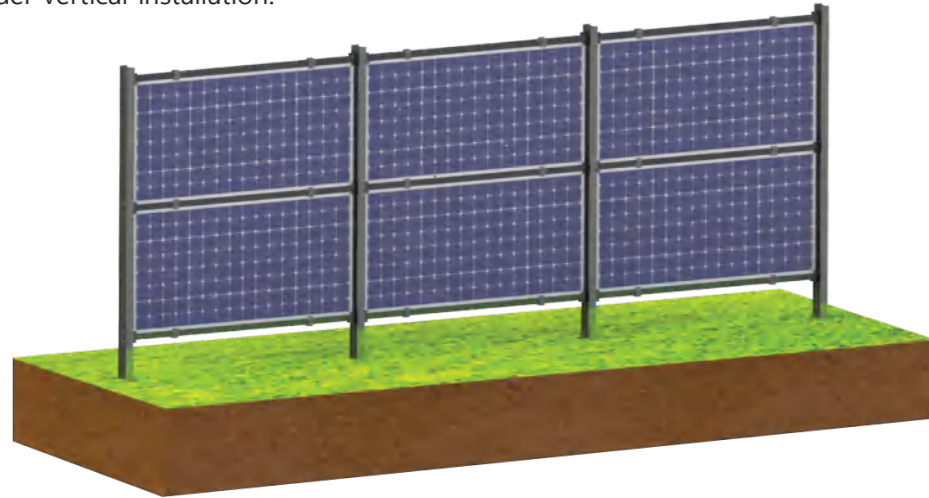
Roof Hooks



>> Solar Vertical Mounting System

Feature:

- Vertical installation of solar panels is one method that allows for flexible design and operation regardless of the shape of the land, and also avoids the burden of snow accumulation and reduced power generation efficiency due to fallen leaves and other factors.
- If you want to increase the amount of electricity generated by solar panels, we recommend that you consider vertical installation.



Side View



Design Conditions

Base:	Ground
Material:	Aluminum alloy (AL6005-T5) Galvanized steel (Q235)
Wind Load:	46m/s
Snow Load:	1.4KN/m ²
Module Specification:	Unlimited
Quality Assurance:	10 years

>> Solar Cable (RoHS Compliant)

- PV cables are mainly used in photovoltaic power generation equipment. The following are examples of PV cable applications.

- Connecting PV Modules Together
- Connecting PV Modules to Junction Boxes
- Connecting Junction Box to Power Conditioner



- Cross-linked polyethylene-insulated and vinyl-sheathed cables with excellent electrical characteristics, long service life, light weight, and easy handling.
- The lineup includes duplex cables with two single-core strands, triplex cables with three single-core strands, and flame-retardant cables.
- Compared to low-voltage VV cables, these cables have superior heat resistance and can carry a larger allowable current.



■ Specification

Size mm ²	Conductor		Insulator		Outer Jacket		Test Voltage v
	Conductor composition Wire/mm	Conductor Strand Outer Dia mm	Outer Dia mm	Conductor DC Resistance (Ω/km)	Insulator Electric Air Resistance MΩ.km		
2	7/0.60	1.80	6.40	9.24	2500	1500	
3.5	7/0.80	2.40	7.00	5.20	2500	1500	
5.5	7/1.00	3.00	8.00	3.33	2500	1500	
8	7/1.20	3.60	8.60	2.31	2000	1500	
2	7/0.60	1.80	5.70	9.24	1000	6500	
3.5	7/0.80	2.40	6.30	5.20	1000	6500	
5.5	7/1.00	3.00	7.10	3.33	1000	6500	
8	7/1.20	3.60	7.80	2.31	1000	6500	

Feature:

- Applicable temperature is -40°C to +90°C
- Withstands up to +200°C within 55s when short-circuited.
- Heat resistance, cold resistance, abrasion resistance, anti-UV, ozone resistance, hydrolysis resistance.
- Single-core, passed vertical combustion test, high flame retardancy.
- TUV, UL, and JET product certifications available.

>> Fence



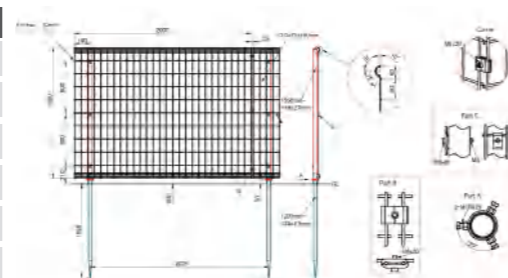
■ Fences can effectively prevent small animals from entering the power station and ensure safety.

9Sun Solar fence advantage:

1. Wide range of use, can be used in flat land, mountain, slope
2. Corrosion resistance, wind resistance, high insulation quality.
3. Directly embedding type, ground screw type, cement type, wide varieties.

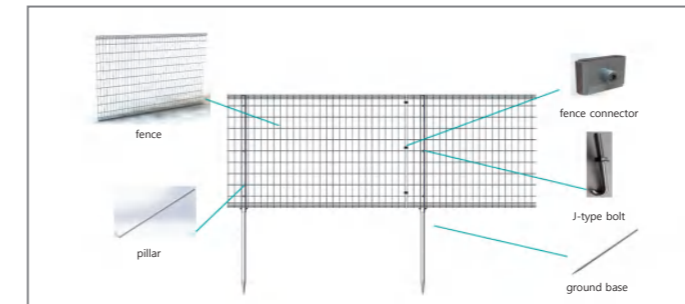
Fence	Ground Screw	Fence Connector	Fence Pillar	Connector	Pillar

Anti-corrosion Treatment :	Galvanized/dipped
Fence Specification :	W200×h1200/h1500/h1800(Customizable)
Door Specification :	Single Door W1000/w2000
	Double Door W2000/w3000/w4000(Customizable)
Color :	White, silvery, green, brown
Fixed Base :	Concrete, ground screw, directly embedded

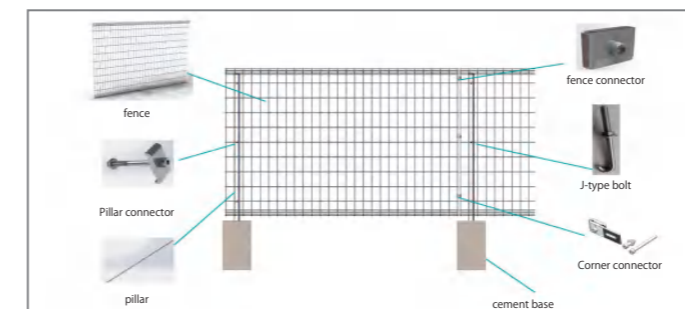


Popular products

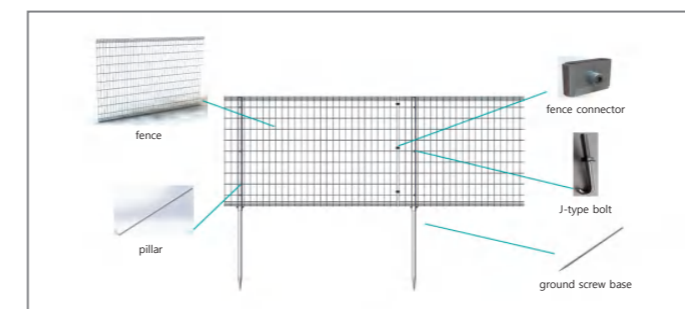
① Directly embedding type



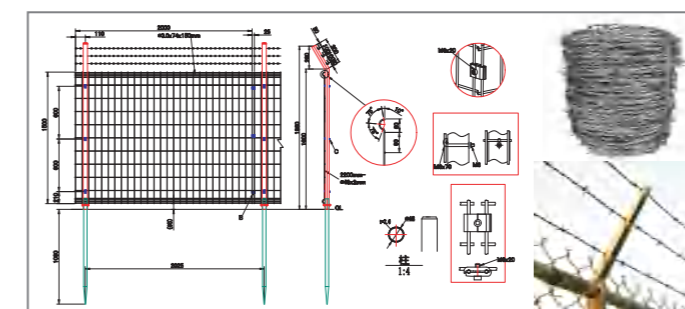
② Cement type



③ Ground screw type



④ Barbed galvanized iron wire



Feature :

■ 1 . Strong wind resistance and connecting parts are made of stainless sus304 material, no rust.

■ 2 . The fence has a coating on the surface and looks pretty. The high-strength construction is very durable (Available for more than 20 years)

■ 3 . Scientific and reasonable design is easier to install. Bale packing is easy to transport.

Feature :

■ Barbed wire is placed above the fence to prevent intrusions.

>> The Mats

- The principle of anti-grass mat is mainly to suppress the photosynthesis of weeds by isolating light, so that weeds wither.
- Because of its excellent penetration resistance, it is most suitable for suppressing weeds.
- Excellent weather resistance, ventilation and water permeability.
- Light weight, excellent construction.



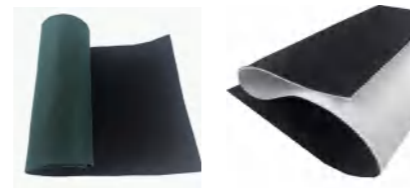
Main Material :	Polyester (pet)
Specification :	2m×50m /roll
Weight :	170g-350g/m ² (one layer)-500g/m ² (two layers)
Color :	green-white-black(one layer)/green+black-white+black(two layers)
Water Permeability :	Outstanding



● Fixed Part - U Type Clamp



● One-layer structure



● Two-layer structure

- Note: The product photos have been as close to the actual color as possible, but depending on the lighting and other conditions of the environment, there may be different colors from the actual product.

>> Ground screw

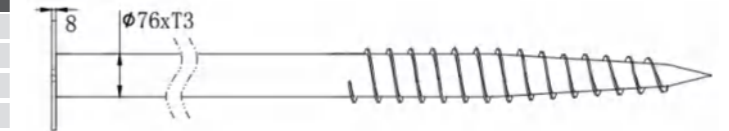
- Screw is widely used in the ground foundation of solar support. The surface is hot-dip galvanized. (The average film thickness is 80~100um) Not easy to rust. There are different kinds of piles to choose according to the conditions on the ground. It also can be customized.

Flange ground screw

Size of the hole 15x45mm



Length:	1200mm~3500mm(Length Can Be Customized)
Flange Diameter:	200mm/76mm
Thickness:	3mm/3.5mm/4mm
Material:	Q235b
Surface Treatment:	Galvanized

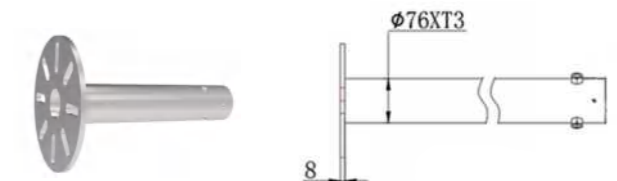


Bearing Capacity of Ground Screw

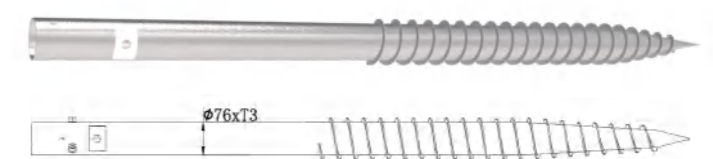
Product No	Diameter (mm)	Diameter of flange plate (mm)	Wall thickness (mm)	Pullout force (KN)					
				Cohesive Soil			Sandy Soil		
				3	5	10	3	5	10
NS-F76A-1600-T3	76	200	3	10.11	16.92	33.88	23.45	33.45	58.51
NS-F76A-1800-T3	76	200	3	11.55	19.33	38.69	24.88	34.99	59.69
NS-F76A-2000-T3	76	200	3	13.02	21.75	43.55	25.89	35.98	60.88
NS-2F76A-1600-T3.5	76	220	3.5	10.11	16.92	33.88	23.45	33.45	58.51
NS-2F76A-1800-T3.5	76	220	3.5	11.55	19.33	38.69	24.88	34.99	59.69
NS-2F76A-2000-T3.5	76	220	3.5	13.02	21.75	43.55	25.89	35.98	60.88

- Note: The maximum load noted above is for reference only. It is related to geological conditions such as ground mode and hardness.

Adjustable ground screw



Length:	1200mm~3500mm(Length Can Be Customized)
Flange Diameter:	200mm/76mm
Thickness:	3mm/3.5mm/4mm
Material:	Q235b
Surface Treatment:	Galvanized



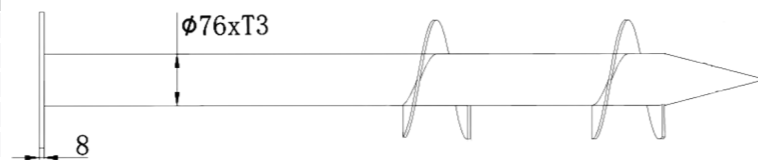
>> Ground screw

Ground screw (two blades)

Size of the hole 15x45mm



Length:	1200mm~3500mm(Length Can Be Customized)
Flange Diameter:	200mm/76mm
Thickness:	3mm/3.5mm/4mm
Material:	Q235b
Surface Treatment:	Galvanized

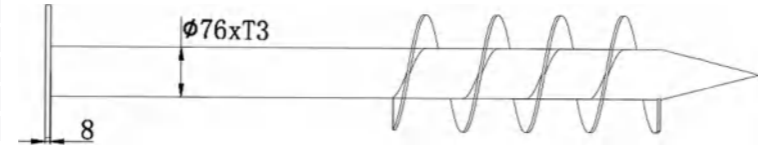


Ground screw (four blades)

Size of the hole 15x45mm



Length:	1200mm~3500mm(Length Can Be Customized)
Flange Diameter:	200mm/76mm
Thickness:	3mm/3.5mm/4mm
Material:	Q235b
Surface Treatment:	Galvanized

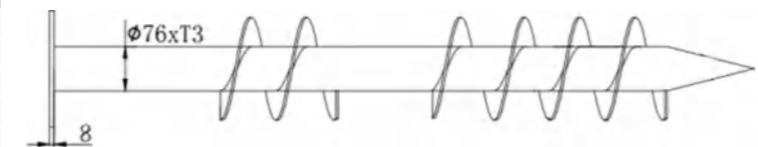


Ground screw (six blades)

Size of the hole 15x45mm



Length:	1200mm~3500mm(Length Can Be Customized)
Flange Diameter:	200mm/76mm
Thickness:	3mm/3.5mm/4mm
Material:	Q235b
Surface Treatment:	Galvanized



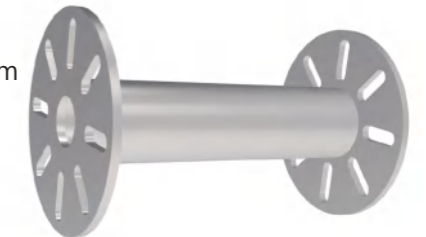
>> Double-sided flange

Double-sided flanges are designed to adjust the uneven ground at the construction site. This product can be used when the exposed height of the pile is not enough.

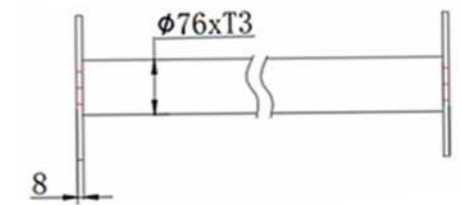
Stationary

Flexible ground screw pipe (with two flanges).

Good stability, reducing the operation cost. Size of the hole 15x45mm



Length:	1200mm~3500mm(Length Can Be Customized)
Flange Diameter:	200mm/76mm
Thickness:	3mm/3.5mm/4mm
Material:	Q235b
Surface Treatment:	Galvanized



Adjustable

The height of ground pile can be adjusted according to the situation of the site when the two pipes are sheathed and used in combination.

Size of the hole 15x45mm



Length:	1200mm~3500mm(Length Can Be Customized)
Flange Diameter:	200mm/76mm
Thickness:	3mm/3.5mm/4mm
Material:	Q235b
Surface Treatment:	Galvanized

>> Construction Case



>> Construction Case



>> Construction Case



>> Construction Case

