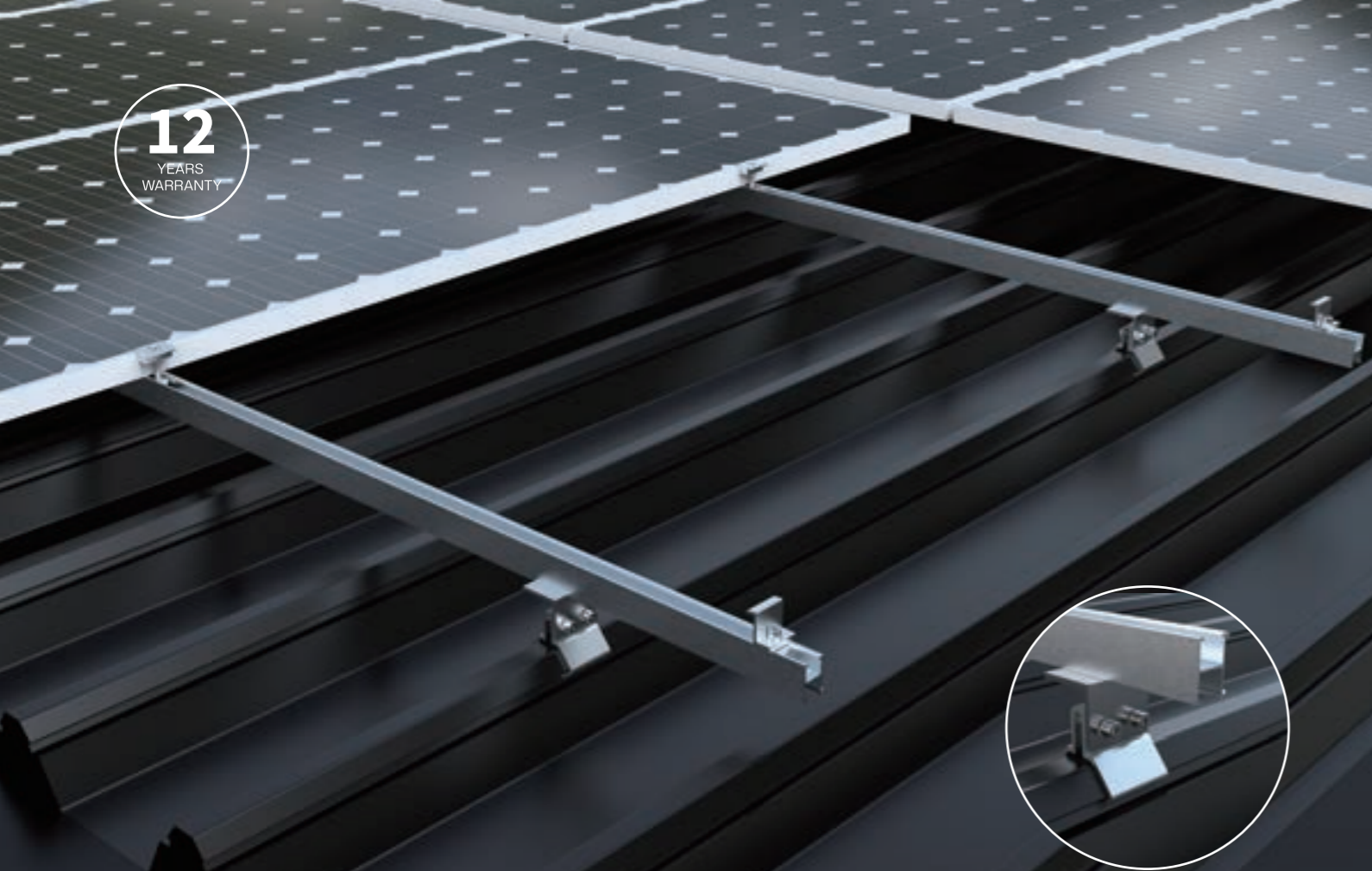


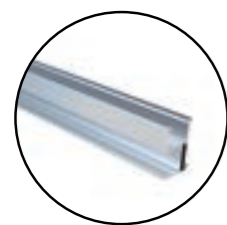
**12**  
YEARS  
WARRANTY



## METAL ROOF SOLAR MOUNTING SYSTEM

### Klip-Lok Solar Mounting Structure

#### Components



Rail



Rail Connector



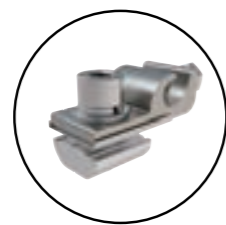
Clamp



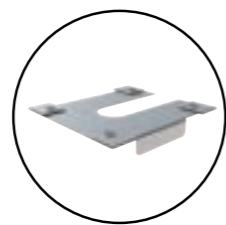
Mid Clamp



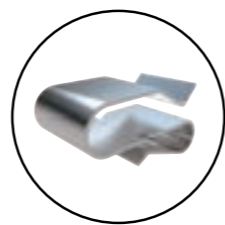
End Clamp



Grounding Lug



Earthing Washer



Cable Clip

#### Specifications

Material	AL 6005-T5 & SUS 304
Coating Thickness	AA10-12, higher standards available upon request
Wind Speed	70m/s (up to 316.8Km/h 196.9mph)
Standard	AS/NZ1170.2:2011/JISC8955-2017/ASCE7-10
Corrosivity Category	C3, higher standards can be customized

#### Features

- 1 Watertight Security:** Penetration-free installation eliminates roof leaks.
- 2 Save Labor:** No Drilling. No Purlin Locating. Faster Installation.
- 3 Universal Compatibility:** Comprehensive range fits various roof profiles.