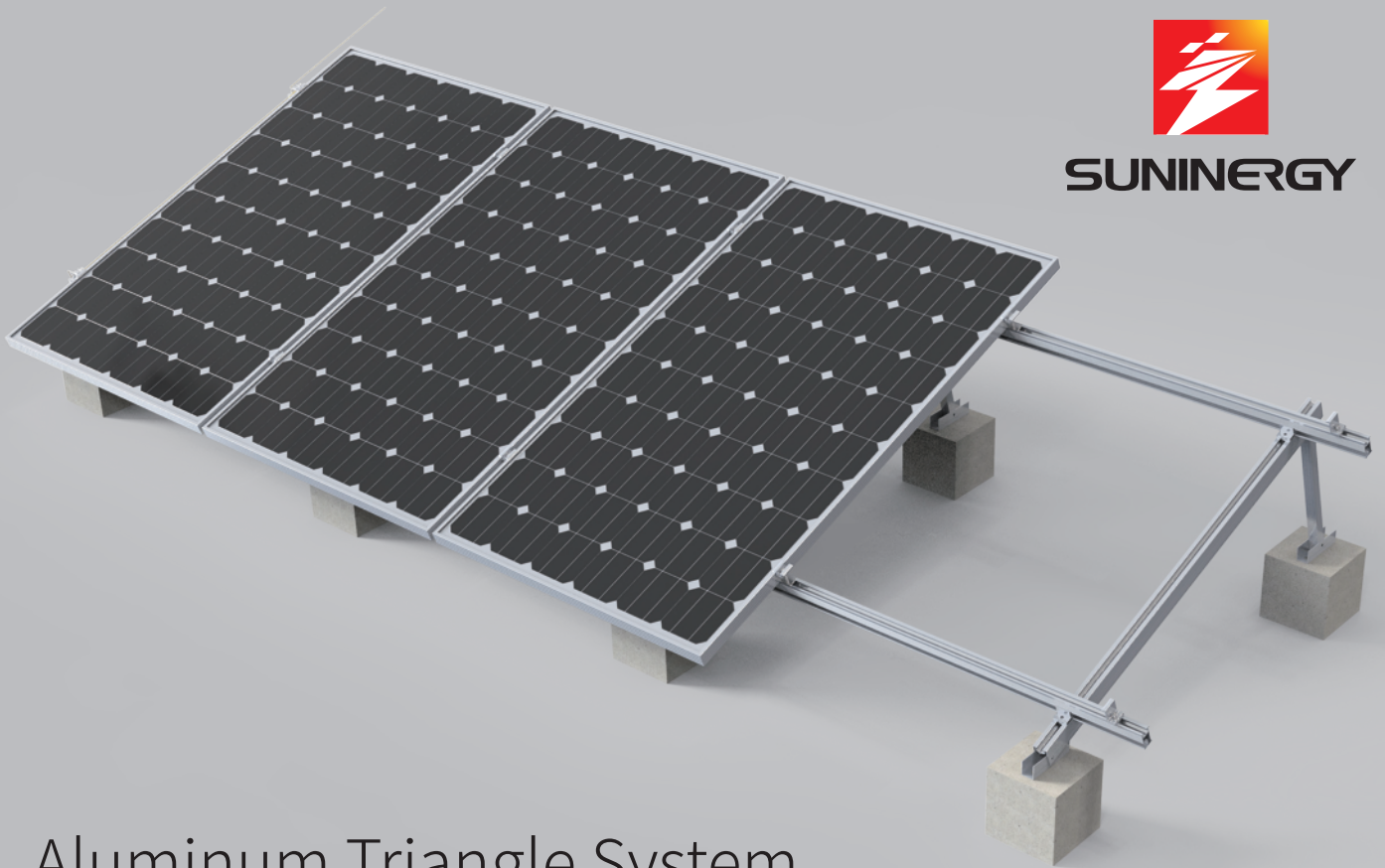




SUNENERGY



## Aluminum Triangle System

### Product Description

- ✦ The triangle mounting in one portrait array mostly used on flat roofs and be fixed into the concretes.

### Product Benefits

- ✦ The structure is made of high-class anodized aluminum and it can be tilted 10°, 15°, 20°, 25° available based on project requirements. No penetration to rooftop with quite lower cost.

### Application

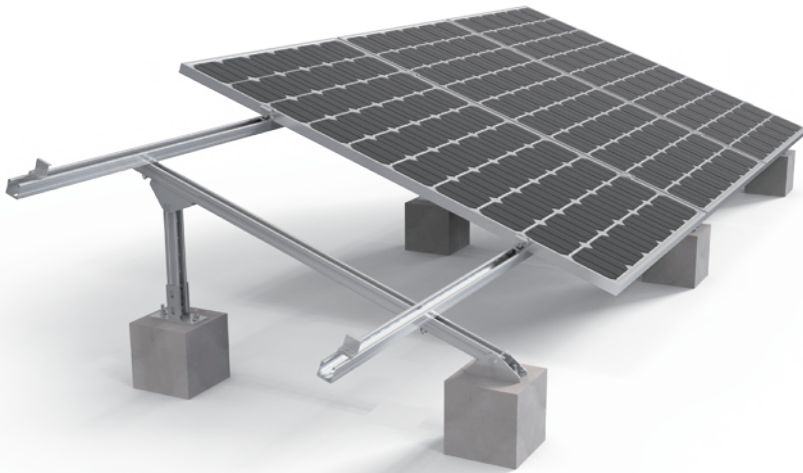
- ✦ Installed onto flat roofs with light weight load.

### Sunenergy Technology Co.,LTD

Add: 20F, Building A, No. 398 Guangming Road, Kunshan City, Suzhou City, Jiangsu Province  
E-mail: [info@sunenergy.com](mailto:info@sunenergy.com) / Web: [www.sunenergy.com](http://www.sunenergy.com) / Tel: 0512-5706 9111



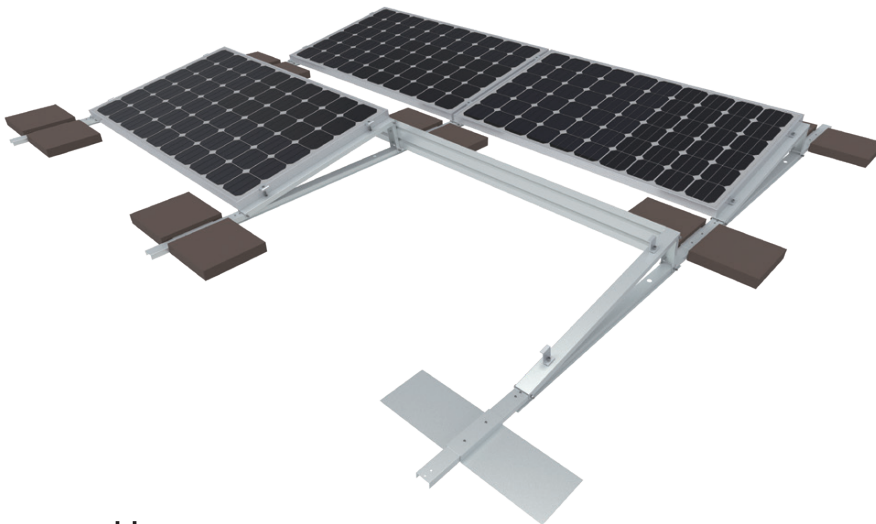
**SUNINERGY**



The C steel triangle mounting could be used on flat roof, also ground. It enables one or two panels in portrait and landscape both.

## C Steel Triangle Mounting

---



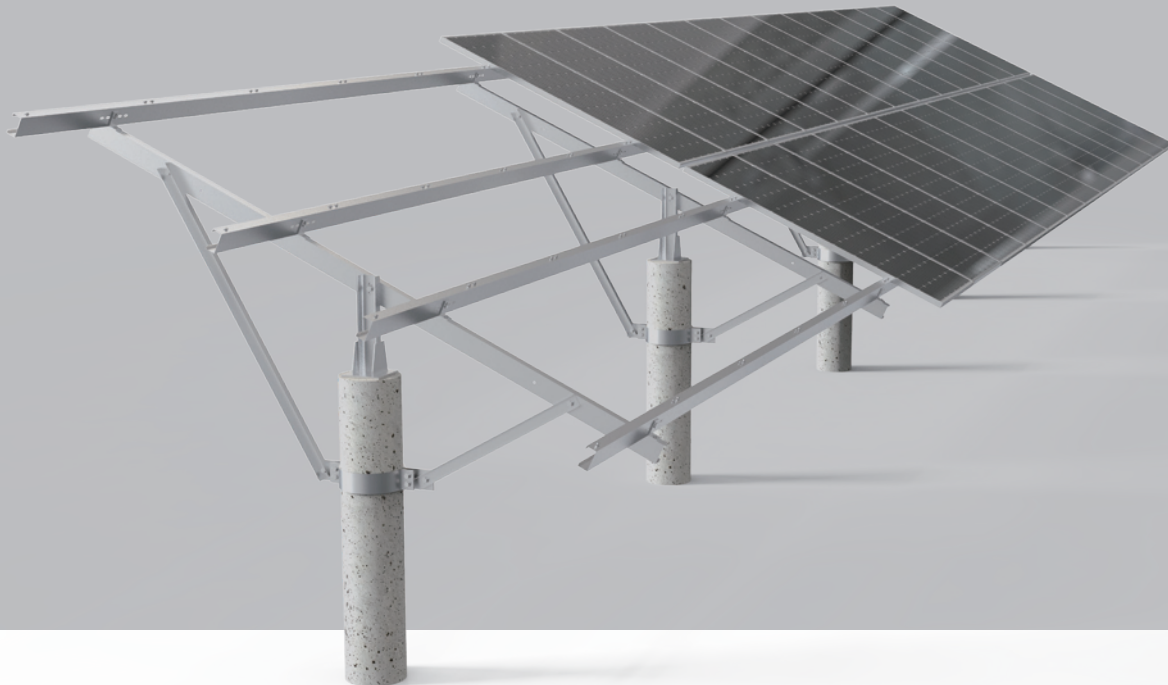
The ballast system installs on the flat roof without any penetration protects the rooftop from any damage during the installation. It could be one or two panels in any orientation.

## Ballast System

---



SUNENERGY



## Single Post Ground Mounting

### Product Description

- + Its simple but strong structures can be satisfied with various of terrains by adjustable connection parts. The reusable agricultural-solar complementary mounting combined recycling and renewable solar generating technology with agricultural activities. It fully takes advantage of land use capacity and also gets profits.
- + Fishery-solar complementary mounting is another dual use solar energy of which enables panels to generate the electricity from available surface. The mounting materials and solutions could solve the corruption and wires arrangement problem under the extremely wet condition.



### Sunenergy Technology Co.,LTD

Add: 20F, Building A, No. 398 Guangming Road, Kunshan City, Suzhou City, Jiangsu Province  
E-mail: info@sunenergy.com / Web: www.sunenergy.com / Tel: 0512-5706 9111



**SUNENERGY**

## Product Features



The single post ground mounting can adapt to different terrains and conditions.



High flexibility and pre-assemble structures enable quick installation.



Perfect structures connection, ground bonding.



Can be used with different basement, such as concrete, screw etc.



Material is combined with aluminum and steel, hot-dipped galvanized steel, or zinc-aluminum-magnesium coated steel.

## Technical Data

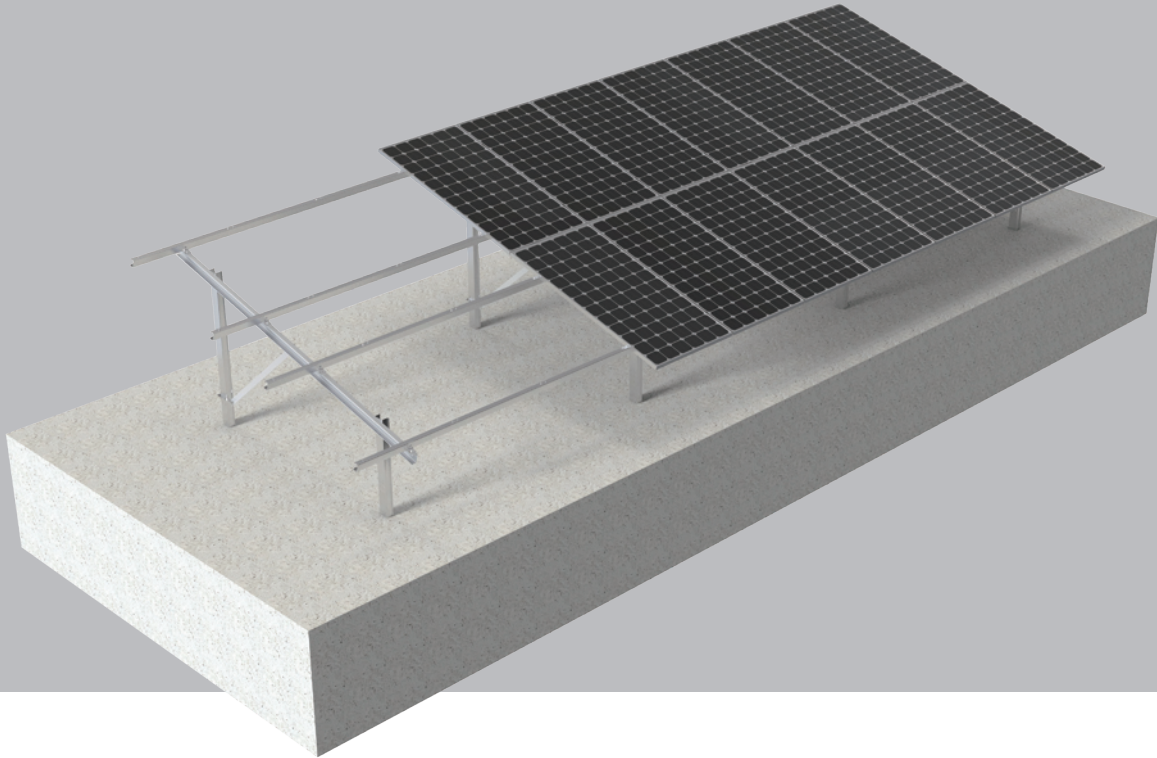
<b>Product name</b>	Product Features
<b>Basement</b>	Adapt to different terrains and surfaces
<b>Installation tilt</b>	15-45°
<b>Material</b>	Aluminum and steel combination, or hot-dipped galvanized steel, or zinc-aluminum-magnesium coated steel
<b>Max wind speed</b>	≤60m/s

## Case





**SUNENERGY**



## Dual Post Ground Steel Mounting

---

### Product Description

- ✦ The dual post system makes the whole structure more stable, and we support customized designs and solutions.
- ✦ The panels could be in landscape and portrait both based on projects requirements.



---

### Sunenergy Technology Co.,LTD

Add: 20F, Building A, No. 398 Guangming Road, Kunshan City, Suzhou City, Jiangsu Province  
E-mail: [info@sunenergy.com](mailto:info@sunenergy.com) / Web: [www.sunenergy.com](http://www.sunenergy.com) / Tel: 0512-5706 9111



SUNENERGY

## Product Features



Stable and secure dual post structures.



High flexibility and pre-assemble structures enable the quick installation.



Pre-assemble parts ship to the project sites directly, save the installation cost.



Works on different foundations, concrete and ground screw.



Material is combined with aluminum and steel, hot-dipped galvanized steel, or zinc-aluminum-magnesium coated steel.

## Technical Data

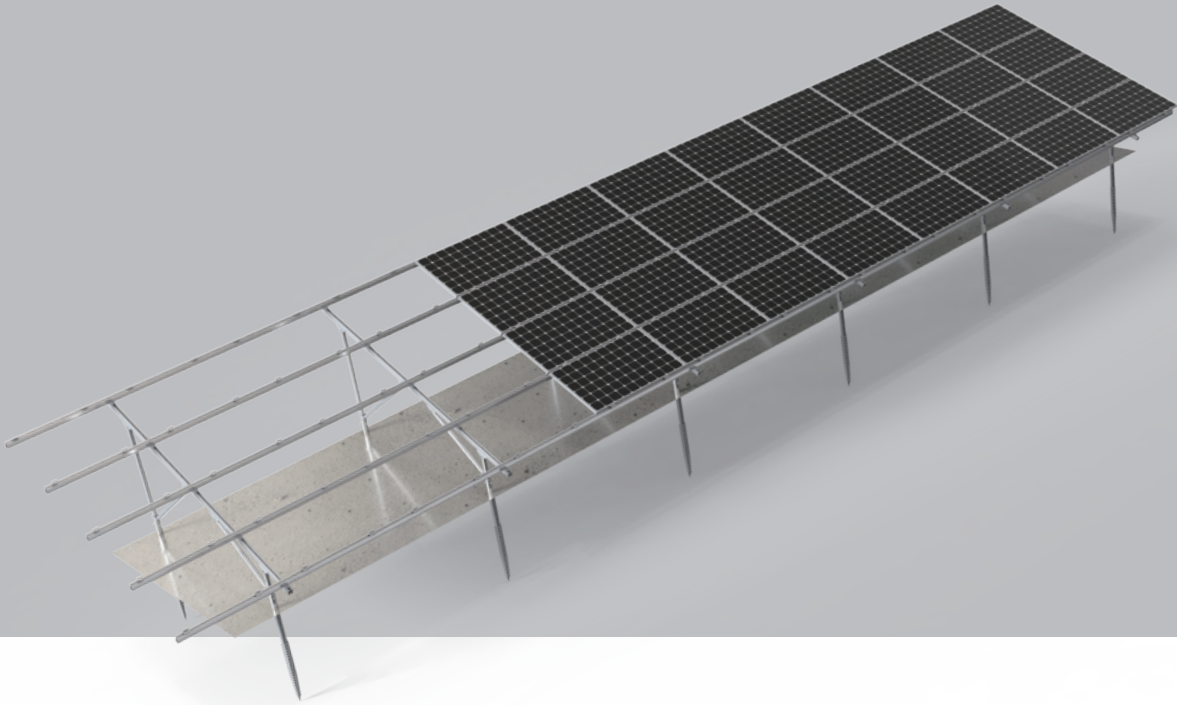
<b>Product name</b>	Dual Post Ground Steel Mounting
<b>Basement</b>	Adapt to different terrains and surfaces
<b>Installation tilt</b>	15-45°
<b>Material</b>	Aluminum and steel combination, or hot-dipped galvanized steel, or zinc-aluminum-magnesium coated steel
<b>Max wind speed</b>	≤60m/s

## Case





SUNENERGY



# Aluminum Ground Mounting

---

## Product Description

✦ The Sunenergy's aluminum ground mounting is made of high-performance anodized aluminum and customized design to modules installation at the extreme weather. All components are pre-assembled which could improve the installation efficiency, saving time and labor cost.



---

## Sunenergy Technology Co.,LTD

Add: 20F, Building A, No. 398 Guangming Road, Kunshan City, Suzhou City, Jiangsu Province  
E-mail: [info@sunenergy.com](mailto:info@sunenergy.com) / Web: [www.sunenergy.com](http://www.sunenergy.com) / Tel: 0512-5706 9111



SUNENERGY

## Product Features



Precut, pre-drill and pre-assembled components before delivery.



The product is suitable for projects with wind speed less than 60m/s.



The overall structure is made of aluminum alloy and stainless steel fittings to ensure strict quality management.



The bracket system is available in two options: iron-aluminum combined support and all-aluminum products.



Adaptable to different installation foundations, such as cement foundations and screw piles.

## Technical Data

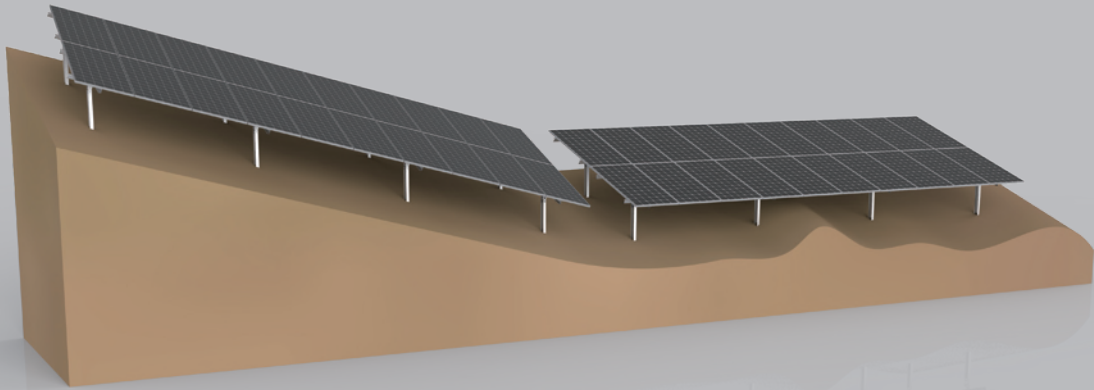
<b>Product name</b>	Aluminum Ground Mounting
<b>Basement</b>	Concrete and screw
<b>Installation tilt</b>	15-45°
<b>Material</b>	All aluminium or the combination of aluminium and steel
<b>Max wind speed</b>	≤60m/s
<b>Snow Load</b>	1.4KN/m <sup>2</sup>

## Case





SUNINERGY



## Slope Ground Mounting

### Product Description

- ✦ The slope ground mounting can satisfy with various of terrains, it also has the advantage of being adjustable in both "east-west" and "north-south" directions.
- ✦ The combination of various mountings, for which structure with more customization can be designed to fit different geological conditions.
- ✦ The structure is based on the standard building code of majority countries, a complete and professional strength analysis report can be issued.



### Suninergy Technology Co.,LTD

Add: 20F, Building A, No. 398 Guangming Road, Kunshan City, Suzhou City, Jiangsu Province  
E-mail: info@suninergy.com / Web: www.suninergy.com / Tel: 0512-5706 9111



**SUNINERGY**

## Product Features



Make the full use of land, fit for uneven terrains.



This product fits for projects with wind speed to 60m/s .a



Material is combined with aluminum and steel, hot-dipped galvanized steel, or zinc-aluminum-magnesium coated steel.



Our product can be installed easily, saving up to 30% of the installation time.

## Technical Data

<b>Product name</b>	Slope Ground Mounting
<b>Basement</b>	Screw and pile
<b>Installation tilt</b>	15-60°
<b>Material</b>	Hot-dipped galvanized steel, Q235 and Q355
<b>Max wind speed</b>	≤60m/s
<b>Snow Load</b>	1.4KN/m <sup>2</sup>

## Case

