

# ZHU series

TOPCon Mono Bifacial Module



## 700-720W 132

### Product Features

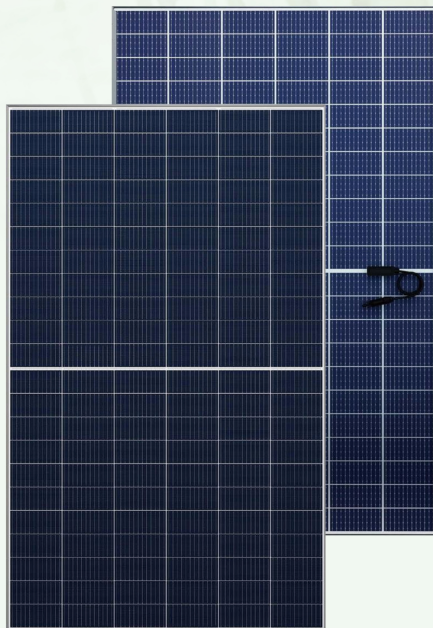
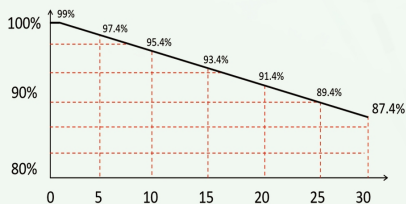
- High power
- Low attenuation
- Excellent low light performance
- Double side power generation

### Leading Quality Standards

**15 yr**  
Quality assurance

**30 yr**  
Power guarantee

**-0.4%**  
Annual decay



### Product System And Certification

ISO 9001

ISO 14001

ISO 45001

IEC 61215

IEC 61730



Add: changzhi, Shanxi, China

Tel: +86 355 5817288

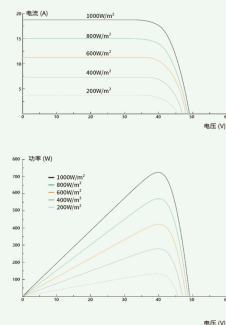
Email: [info@luansolar.com](mailto:info@luansolar.com)

<https://www.luansolar.com>

## Mechanical Parameters

Cell	N-type TOPCon (132)
Dimensions	2384±2mm×1303±2mm×33±1mm
Weight	39kg±3%
Glass	2.0mm AR coating heatstrengthened glass, low iron
Frame	Anodized aluminium alloy
Junction box	IP68, 3 diodes
Wireway	4mm <sup>2</sup> , 350mm (+) /350mm (-) or customized length
Packaging	33 pcs/pallet, 1315×1130×2520mm 1320kg/pallet
Loading quantity	20GP: 132pcs, 40HQ: 594pcs, 17.5m truck: 726pcs

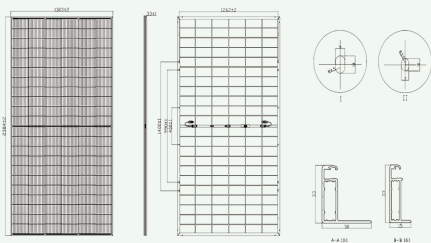
## I-V Curve



## Operation Parameters

Maxsystem voltage	1500V DC
Operating Temperature	-40°C ~+85°C
Fuse's rated current	25A
Maxload front	5400Pa
Maxload back	2400Pa
NOCT	45±2°C
Safety level	Class II
Fire performance	UL Type I

## Drawing



## Electrical Parameters

Module	JKL132-C-700NB			JKL132-C-705NB			JKL132-C-710NB			JKL132-C-715NB			JKL132-C-720NB		
STC/NOCT	STC	NOCT	STC	STC	NOCT	STC	STC	NOCT	STC	NOCT	STC	STC	NOCT	STC	
	FS	FS	RS	FS	FS	RS	FS	FS	RS	FS	FS	RS	FS	FS	RS
Pmax [W]	700	526	560	705	530	564	710	534	568	715	538	572	720	542	576
Vmp [V]	38.85	36.34	38.83	39.00	36.49	38.98	39.15	36.64	39.13	39.30	36.79	39.28	39.45	36.94	39.43
Imp [A]	18.02	14.48	14.42	18.08	14.53	14.46	18.14	14.58	14.51	18.20	14.63	14.56	18.26	14.68	14.61
Voc [V]	47.26	44.05	46.84	47.41	44.20	46.99	47.56	44.35	47.14	47.71	44.50	47.29	47.86	44.65	47.44
Isc [A]	18.86	15.33	15.09	18.94	15.39	15.15	19.01	15.46	15.21	19.08	15.52	15.26	19.15	15.58	15.32
EFF [%]	22.53%			22.70%			22.86%			23.02%			23.18%		
Power tolerance [W]							0 ~+5W								
α <sub>Isc</sub>							+0.046%/°C								
β <sub>Voc</sub>							-0.250%/°C								
γ <sub>Pmp</sub>							-0.300%/°C								
STC	Irradiance 1000W/m <sup>2</sup> , Cell temperature 25°C, Spectral AM1.5														
NOCT	Irradiance 800W/m <sup>2</sup> , Ambient temperature 20°C, Spectrum AM1.5, Wind speed 1m/s														

Note: The electrical performance in this product catalog do not only refer to a single module, or are they promised in the contract. The electrical parameters are only used for comparison between different module types.h