



Brand : SEA FOREST

Technical Specifications

Product : Light weight Flexible solar panel

Type: Flexible, Lightweight

Model: 550-560W

Xiamen Seashine Forest Industry And Trade Co., Ltd.

ADD: Room 2206, No. 6 Hubin East Road, Xiamen, Fujian, China. ZIP: 361010

Tel: 0086-592-5657925 FAX: 0086-592-5628163 Mob: 0086-1360-6089-112

E-mail: plywood@seashineforest.cn

Website: www.seaforestpv.com

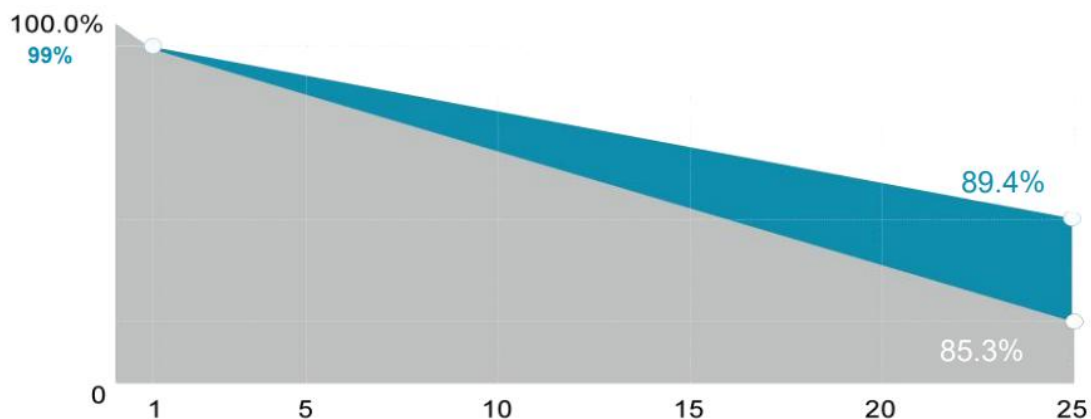
1, FEATURE

1. As lightweight modules will bend during transportation and installation, no hidden cracks will occur in the modules if they are bent repeatedly for no less than 10 times (bidirectional bending) at a minimum bending radius of 0.5 meters.
2. As lightweight monocrystalline silicon photovoltaic modules lack the protection of front glass, their hail impact resistance is particularly critical. The module products provided must comply with the IEC 61215 hail test standard (25 mm ice ball, 23 m/s impact speed), the cells must be free of microcracks, the power attenuation must be less than 1%, and certification from a third-party testing agency approved by CNAS must be provided.
3. Module surface pressure requirements: front pressure > 5400Pa, back pressure \geq 2400Pa.
4. Excellent wind resistance: passed the wind tunnel test of 17-level strong wind (56 m/s)
5. Snow load resistance: can withstand up to 2 meters (2 meters) of snow.
6. This product includes insurance.

2, LINEAR PERFORMANCE WARRANTY

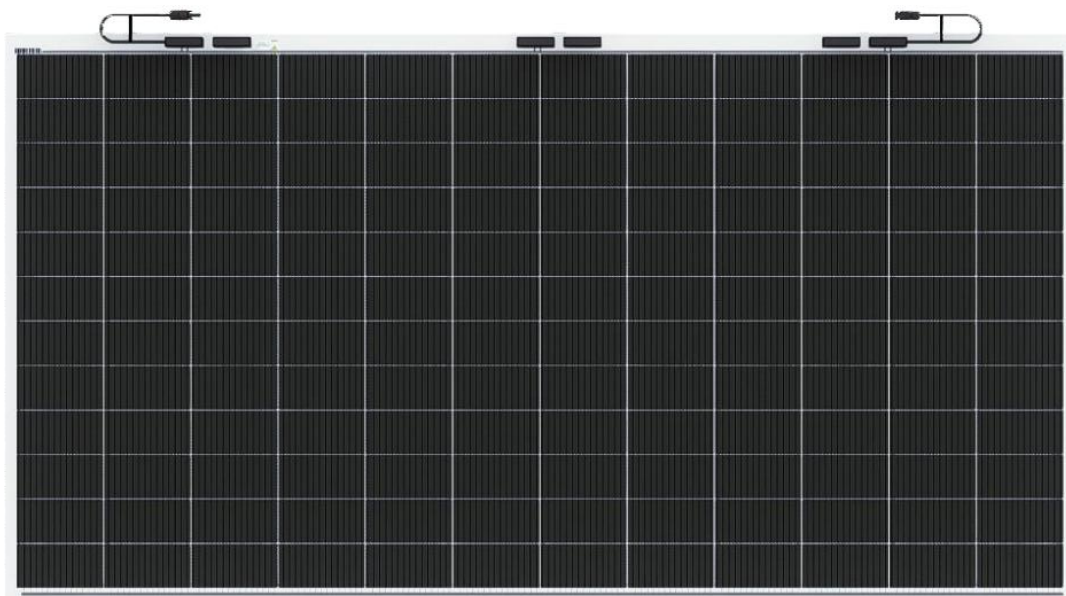
12 years materials and workmanship warranty;

25 years liner power output warranty;



3, CERTIFICATES: CE ,TUV

4, IMAGE



5, ELECTRICAL PARAMETERS @ STC

Max. Power Output Pmax (W)	550	555	560
Max. Power Voltage Vmp (V)	45.19	45.25	45.29
Max. Power Current Imp (A)	12.18	12.27	12.37
Open Circuit Voltage Voc (V)	52.96	53.01	53.05
Short Circuit Current Isc (A)	12.95	12.92	12.96
Module Efficiency(%)	20.4	20.6	20.7
Operating Temperature	-40°C~+85°C		
Maximum System Voltage	1500V		
Maximum System Fuse Rating	25A		
Power Tolerance	0~+5W		

STC: Irradiance 1000W/m² Cell Temperature 25°C AM=1.5

6, MECHANICAL PARAMETERS

Solar Cell	N-type Mono
Number of Cells	144pcs(6x24)
Dimensions (L*W*H)	2250*1200*1.8mm
Weight	7.8KG
J-Box	IP68
Cable	4.0mm ² *370mm
Connector	MC4 compatible

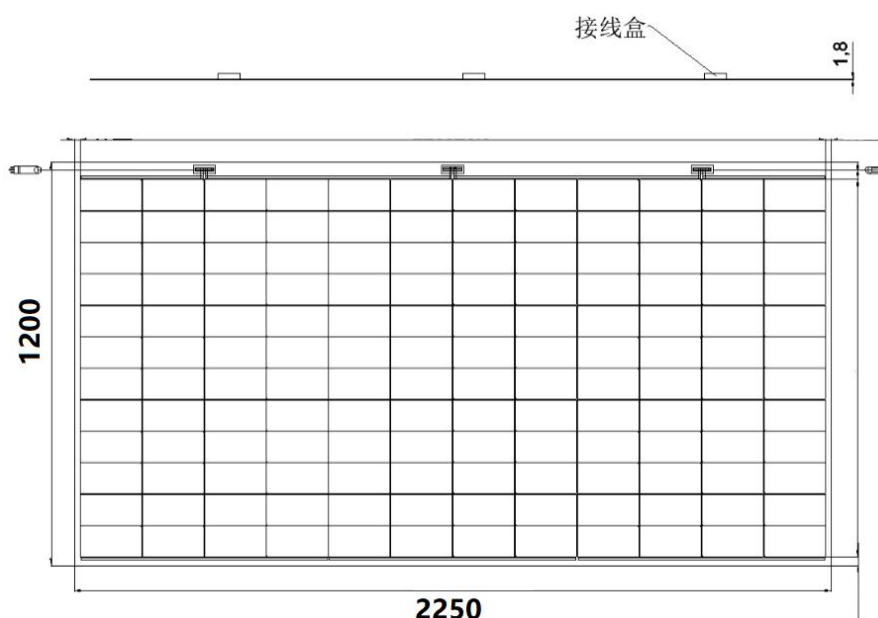
7, TEMPERATURE CHARACTERISTICS

NOCT(Nominal Operating Cell Temperature)	45°C ± 2°C
Temperature Coefficient of Pmax	-0.29%/°C
Temperature Coefficient of Voc	-0.26%/°C
Temperature Coefficient of Isc	+0.045%/°C

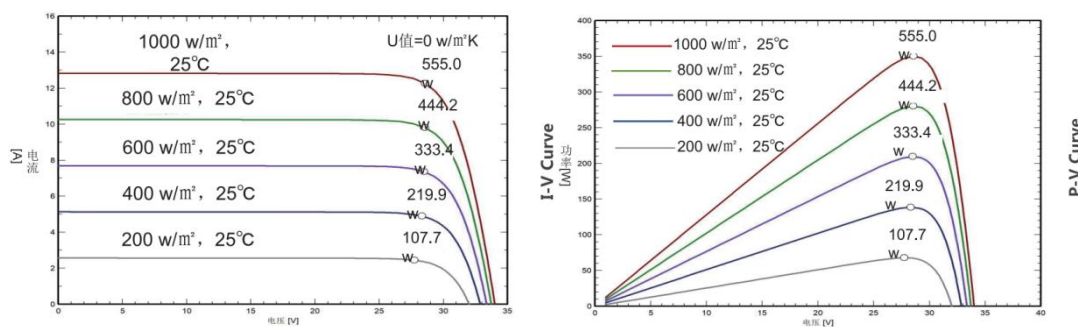
8,PACKING

Container	40HQ
Pieces per pallet	70
Pieces per container	1260

9,THE SIZE OF MODULE



10,CHARACTERISTIC CURVES



All Rights Reserved @ Xiamen Seashine Forest Industry And Trade Co., Ltd.

Any changes, Please take the latest version.