

Direct Manufacturer Since 2008/ 15,000m² Factory/ 18+ Years Solar Mounting Experience/ 50GW+ Global Supply/Fast 15-Day Delivery

8mm Thick

Aluminum Hooks

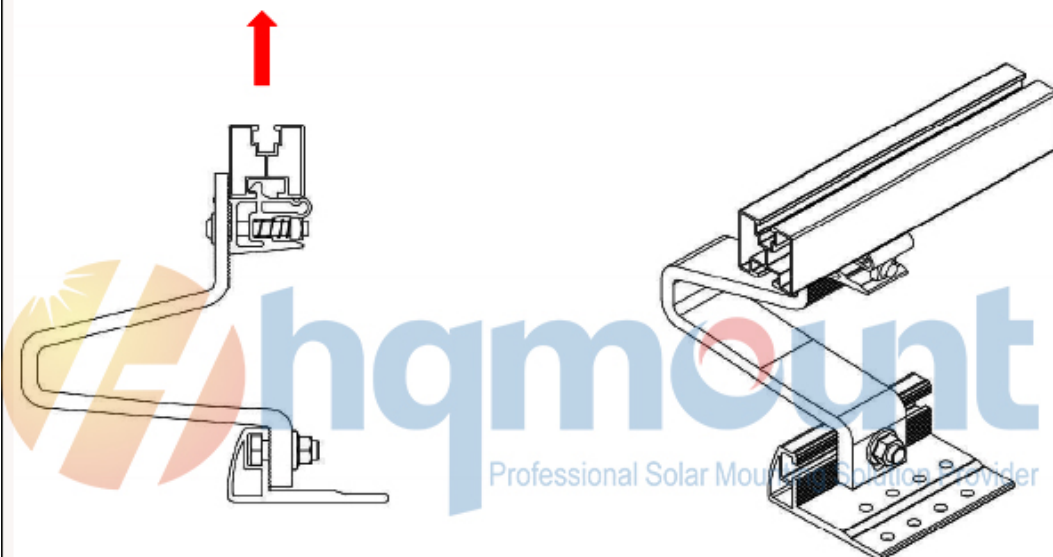
Robust aluminum solar tile hooks provide secure attachment to roof rafters.

TUV tested with maximum force >3.5kN – well above typical requirements.

Adjustable height.

Compatible with most tile solar mounting profiles.

Over 3.5KN Test Result



Loading rate: 2mm/min

Test results:

No.	Max Force ¹⁾ (N)	Displacement when max force ²⁾ (mm)
1	3503.13	78.76
2	3531.25	77.92

**40×40 European
Standard Profile**

Compatible with
common accessories,
high strength, and easy
to source.

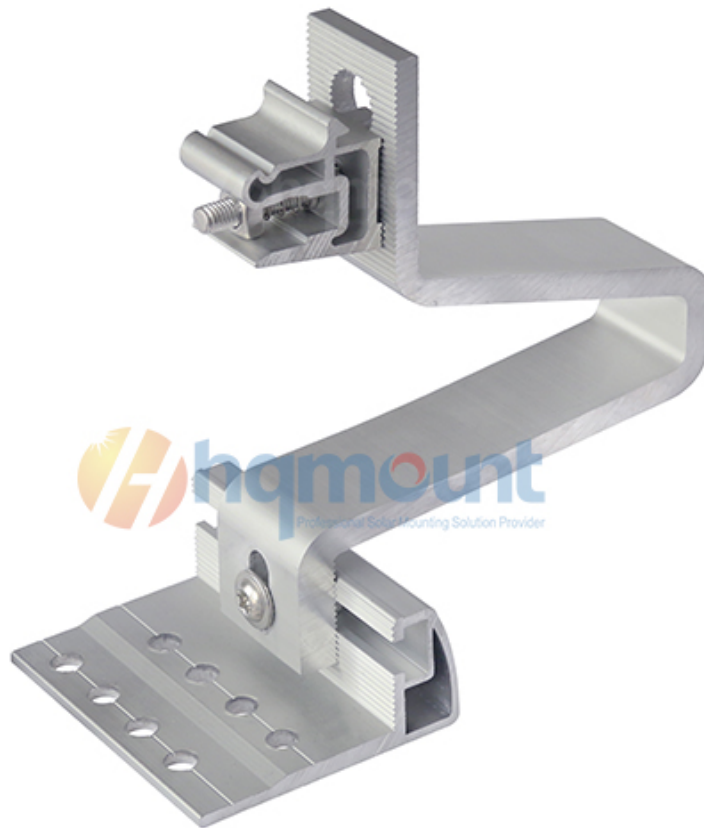
Anodized Aluminum
profile with AA10,
AL6005-T5 material.



**Patented Click
Holder Roof Racking
System**

Fast solar hook-to-rail
attachment without tools
– simply click into place.

Fasten on the side
instead of under the rail
for bolt and nut, easier
and quicker.



Double-Click Rail

Splice

Join two 40×40 rails
without extra screws –
secure, fast, and reliable.

Connects two rails
internally with two clicks

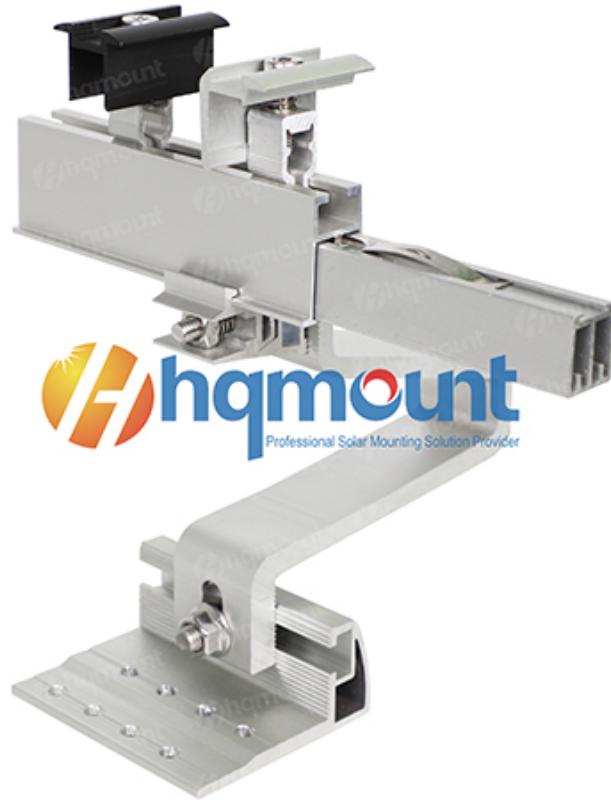
– no screws, no
protrusions.



Rapid Solar Panel Clamps

Quick-fix clamps for
solar panels – no loose
parts, reduced labor.


One-hand operation, 30-
35mm solar
panel compatible, fast
installation with black
anodizing for a better
look option.



One Tool for All

Wood solar roof screws (tile hook fixation), hook adjustment screw, and panel rapid clamps – all use the same tool. No switching. Single driver bit for all screws – wood screws, hook adjustment, clamps.



<p>Optional Rail End Cap</p> <p>Protects rail ends, improves aesthetics, and prevents debris ingress.</p> <p>Plastic cap, snap-fit, protects rail end and gives finished look.</p>	
---	---

Solar Tile Mounting System Aluminum Hook Rapid Clamp

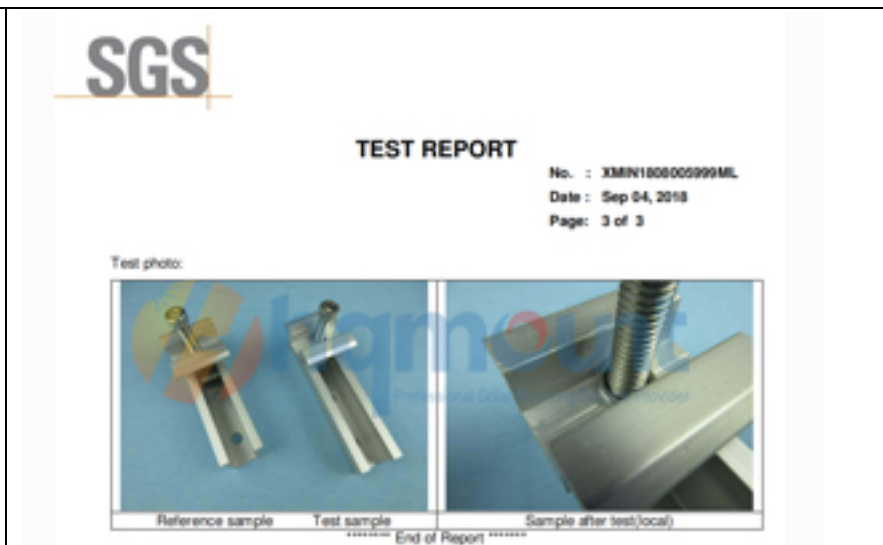
Installation– Patented Click Holder, One Tool, Fast Installation

8mm Aluminum Hooks • TUV Tested >3.5kN • 40×40 European Profile • Rapid Clamps • Double-Click Splice

Manufacturing Excellence – Direct from Solar Mounting Factory HQ Mount

Stage	Description
-------	-------------

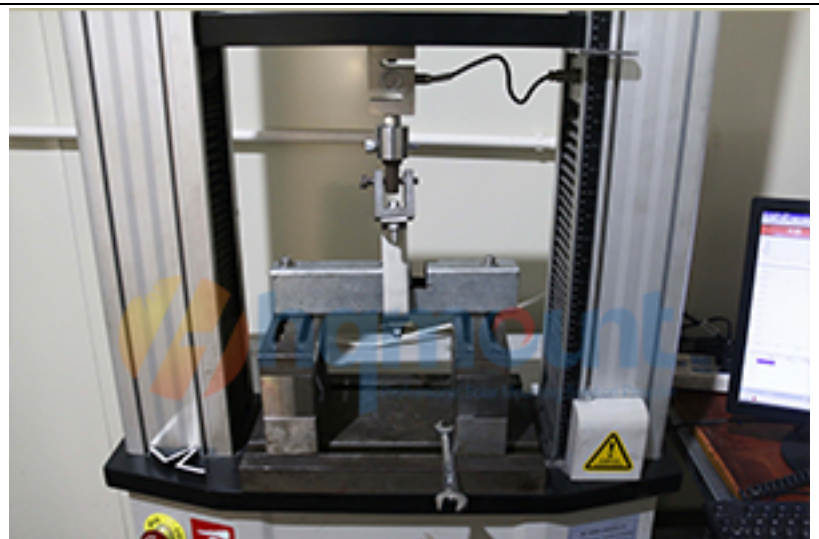
Raw Material
(SGS Salt Spay Testing)
Verify AL6005-T5 composition and anodized coating thickness



In-Process QC
(Anodizing Layer Testing)
HQ Mount testing including raw material testing, processing QC check out, assembly and final packing QC Steps)



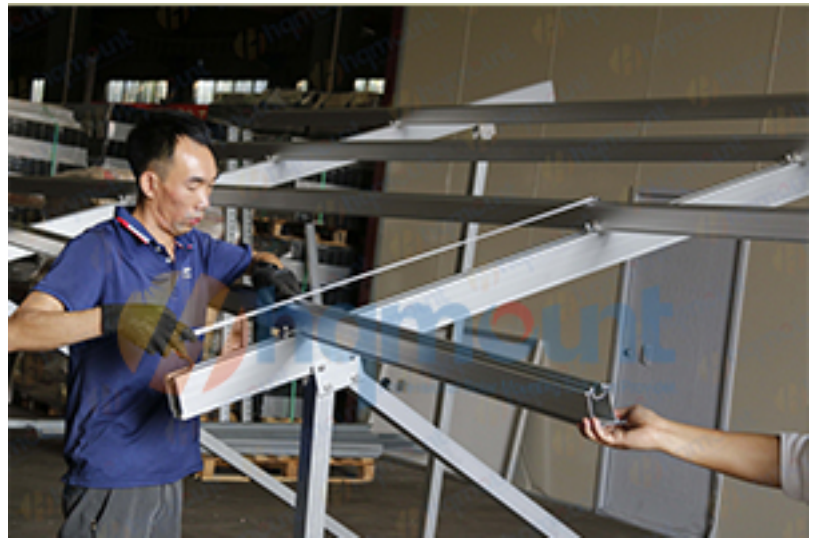
Component Testing
(Pull up Testing)
Mechanical strength verification for all load-bearing parts in-house testing



Pre-Shipment Test

(Full mock-up assembly before shipment)

HQ Mount Engineers and QC teams are ensuring a perfect fit on site



"I wish I'd known this system sooner, it would save so much time and money on the roof installation."

-A solar distributor from Switzerland

Ready to Speed Up Your Tile Roof Installations?

Contact our engineering team for a free quote – tell us your roof type, panel size, and quantity.

info@hqmount.com | +86 180 3016 0771

www.hqmount.com