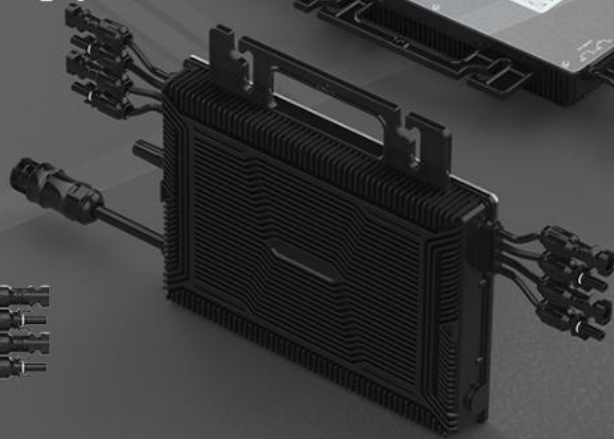




All Of These Models Listed

Can Be **Connected** to The

SMART LIFE Monitoring System



GTMI-2400 SERIES 4 in 1

Solar Smart Micro Inverter

MODEL: GTMI-2000 / GTMI-2400

4 PV version

A better choice of Solar Smart Micro Inverter

ALL NEW GENERATION MICRO INVERTER GTMI SERIES LAUNCHED IN 2025.

APP remote monitoring real-time data display, cloud data storage.

Widest output voltage range 85-265Vdc, automatic voltage recognition everywhere.

Reverse transmission technology, up to 93% efficiency or more.

Excellent low-light lockout(APL) works even in atrocious weather.

Hand in hand multiple parallel staking mode, expansion is not restricted by conditions.

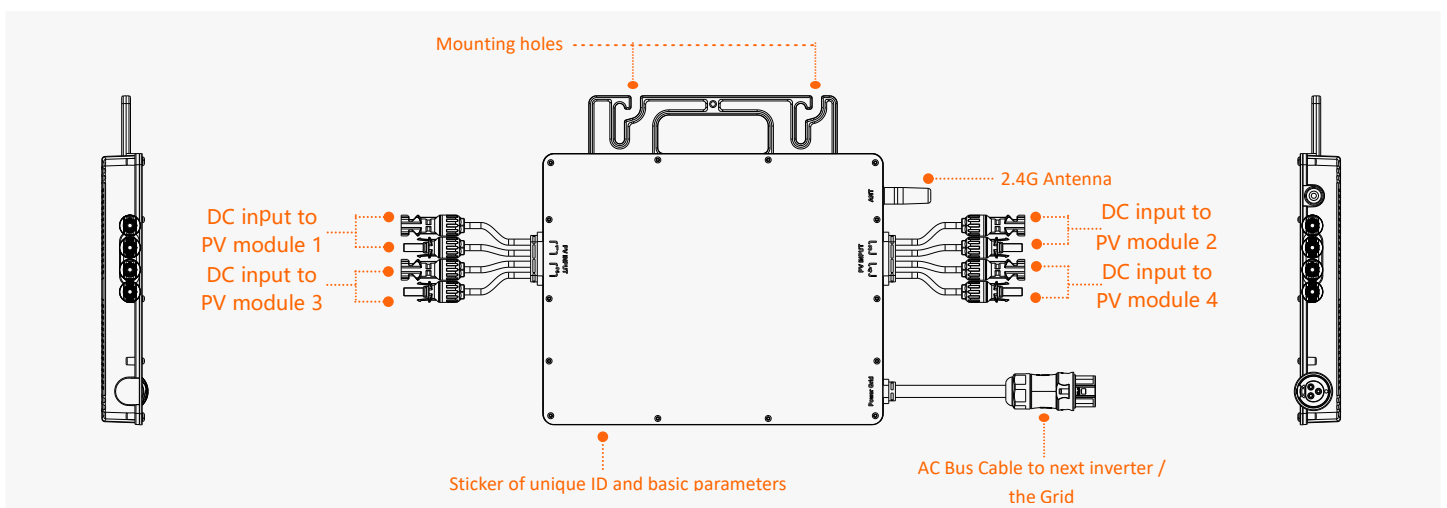
Waterproof rate IP67, effectively prevent rain erosion.

FEATURES

- ⊙ Built-in WIFI communication "Smart Life" app control.
- ⊙ Wide operation voltage input 22-60Vdc.
- ⊙ Adapted to 1-2-3 phase according to application.
- ⊙ Reverse transmission technology, load priority function.
- ⊙ Output power is adjustable according to application.
- ⊙ Automatic voltage conversion function.
- ⊙ Automatic detection of AC 0-angle phase.
- ⊙ Output pure sine wave.
- ⊙ Automatic sunlight sensing function.
- ⊙ Automatic Power Lock(APL).

- ⊙ Automatically adapt to different load power factors.
- ⊙ Constant current and power output.
- ⊙ Grid fault limits output(Anti-Islanding effect).
- ⊙ Current limit protection function.
- ⊙ Mixed stack of multiple devices.
- ⊙ Built-in highly integrated NA protection switch.
- ⊙ Over temperature load reduction function.
- ⊙ Automatic power factor compensation.
- ⊙ Solar PV leakage detection/alarm function.
- ⊙ Built-in power statistics.

STRUCTURE



GTMI-2000/GTMI-2400 MICRO INVERTER

INPUT DATA	GTMI-2000		GTMI-2400	
Max. input PV module	4 × 625Watt		4 × 750Watt	
MPPT voltage range	30 - 54VDC		30 - 54VDC	
Operation voltage range	22 - 60VDC		22 - 60VDC	
Maximum input current	4 × 20A		4 × 23A	
OUTPUT DATA	GTMI-2000		GTMI-2400	
	☉ 120VAC	☉ 230VAC	☉ 120VAC	☉ 230VAC
Peak output power	2000Watt	2000Watt	2400Watt	2400Watt
Rated output power	1950Watt	1950Watt	2350Watt	2350Watt
Rated output current	16.60A	8.70A	20.00A	10.50A
Rated voltage range*	80 - 160VAC	180 - 260VAC	80 - 160VAC	180 - 260VAC
Rated frequency range*	50 - 60Hz	50 - 60Hz	50 - 60Hz	50 - 60Hz
Power factor (cos φ)	> 99%	> 99%	> 99%	> 99%
Maximum units per subcircuit	2pcs (Single-phase)	4pcs (Single-phase)	2pcs (Single-phase)	4pcs (Single-phase)
OUTPUT EFFICIENCY	GTMI-2000 / GTMI-2400			
Static MPPT efficiency	99.5%			
Maximum output efficiency	95%			
Consumption at night	<50mW Max			
THD	< 3%			
OPERATING CONDITIONS / DIMENSIONS / APPLICATIONS	GTMI-2000 / GTMI-2400			
Environment temperature	-40°C ~ +65°C			
Operating temperature (Inside inverter)	-40°C ~ +85°C			
Electrical isolation	Transformer, Galvanically isolated			
Cooling concept	Self - cooling			
Degree of protection (Waterproof)	IP67			
Communication mode	WIFI / 2.4G			
Power transmission mode	Reverse transfer, load priority			
Integrated ground	Equipment ground is provided by PE in AC cable, no additional ground is required			
Protection functions	Isolated island protection, voltage protection, frequency protection, temperature protection, current protection, etc.			
Maximum current of AC bus cable	40A			
AC cable length	20cm			
Dimensions (W×H×D mm)	308mm × 297.5mm × 38mm			
Net weight (Kg)	3.52Kg			
Design Compliance	EN50549-1, EN61000-3-2, EN62109, DIN VDE V 0126, VDE-AR-N 4105, UL1741, etc.			
Warranty	12 years materials and workmanship, 25 years extended warranty			
* AC rated voltage range and frequency range depend on local standards.				