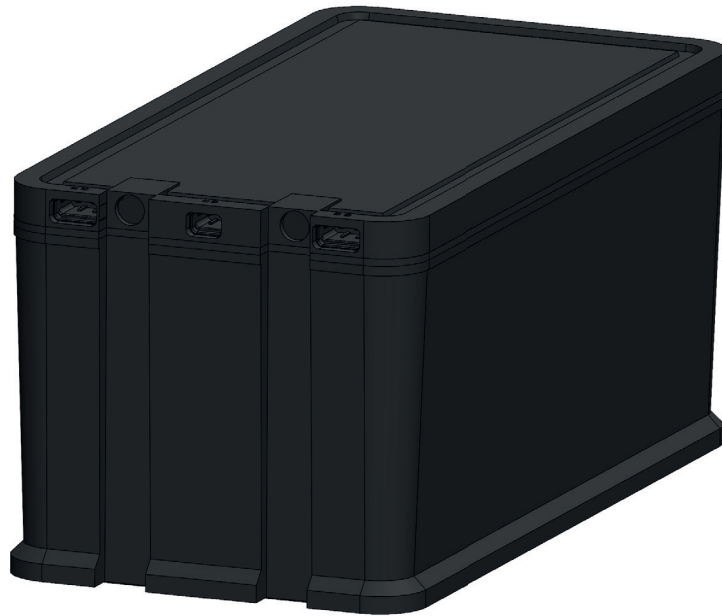


BOS battery X

Future proof lithium-ion battery



Smart, certified Lithium-Ion storage for mobile and industrial systems

The BOS battery X is a high-performance lithium-ion energy storage system, available in 12V, 24V, and 48V versions — engineered to deliver reliable and efficient power across mobile, off-grid, and commercial energy applications.

Developed for seamless integration, the BOS battery X follows leading industrial and automotive standards, making it the ideal solution for professional system designers. Whether deployed in vehicle electrification, industrial automation, or decentralized energy systems, each unit is factory-optimized for maximum compatibility, performance, and longevity.

Compact in form, scalable by design, and equipped with intelligent battery management, the BOS battery X empowers system integrators with the flexibility to build robust, future-proof energy solutions — where reliability, quality, and compliance are non-negotiable.

BOS battery X

TECHNICAL DATA

System voltage variants	12 V	24 V	48 V
Nominal lithium capacity	180 Ah/ 2300 Wh	90 Ah/ 2300 Wh	45 Ah/ 2300 Wh
Battery voltage	12.8 V	25.6 V	51.2 V
Continuous current	180 A	180 A	90 A
Max. current (< 60s)	360 A	360 A	180 A
Battery Cells	LFP 32140		
Number of cycles at 1C / 25 °C	3000 full cycles (80% remaining capacity after 3000 cycles)		
Number of cycles at 0,3C / 25 °C	> 5000 full cycles (80% remaining capacity after 5000 cycles)		
Housing dimensions	353x175x165 mm		
Weight	17,5 kg		
Connectivity	M8 screw terminals CANOpen second CAN port		
Charging temperature	-20°C to 60°C (integrated heater active between -30°C and 10°C)		
Discharging temperature	-20°C to 60°C (recommended -10°C to 40°C for max. lifetime)		
IP rating	IP65		
Protection features	Overcurrent, overvoltage, short circuit, deep discharge, reverse polarity protection		
Smart features	Integrated BMS with balancing, soft start function & energy saving function for communication		

STANDARDS

QUALITY & FUNCTIONAL SAFETY

IATF 16949 - Automotive quality management system
ISO 26262 - Functional safety for road vehicles

BATTERY SAFETY & ABUSE TESTING

UN ECE R100 - Battery safety for electric vehicles
LV124 - Automotive component stress and reliability testing
UN38.3 - Certification for safe transport of lithium batteries

ELECTROMAGNETIC COMPATIBILITY

UN ECE R10 - EMC for Vehicle components
CISPR 25 - EMC standard for Automotive components

AUTOMOTIVE TYPE APPROVAL & LEGAL MARKET ACCESS

E1 Mark - Official type approval for automotive use