

## Border solar modules for M320-HC72-b LEVEL up

### 3337.2021 M160-HC36-b LEVEL up

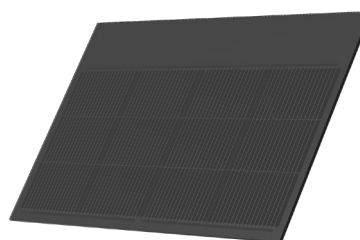
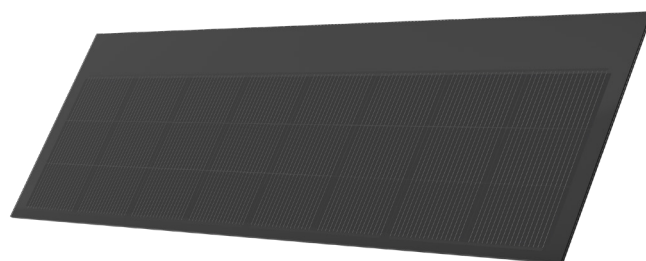
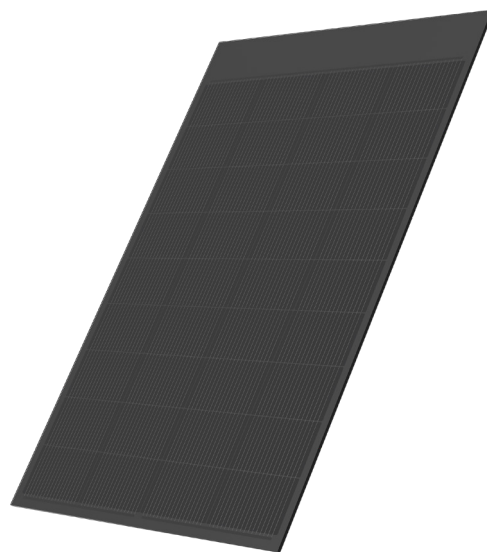
Nominal power (Pmpp)	160 Wp
Nominal voltage (Umpp)	22.3 V
Nominal current (Impp)	7.19 A
Open circuit voltage (Uoc)	26.2 V
Short circuit current (Isc)	7.71 A
Number of cells (matrix)	36 (4x 9)
Dimensions (LxWxH) ±3.0 mm	1100x770x8 mm
Modular dimensions (LxW)	1016x775 mm
Weight	14 kg

### 3337.2022 M105-HC24-b LEVEL up

Nominal power (Pmpp)	105 Wp
Nominal voltage (Umpp)	14.7 V
Nominal current (Impp)	7.19 A
Open circuit voltage (Uoc)	17.4 V
Short circuit current (Isc)	7.71 A
Number of cells (matrix)	24 (8x 3)
Dimensions (LxWxH) ±3.0 mm	465x1541x8 mm
Modular dimensions (LxW)	380x1550 mm
Weight	11.5 kg

### 3337.2023 M50-HC12-b LEVEL up

Nominal power (Pmpp)	50 Wp
Nominal voltage (Umpp)	7.2 V
Nominal current (Impp)	7.19 A
Open circuit voltage (Uoc)	8.6 V
Short circuit current (Isc)	7.71 A
Number of cells (matrix)	12 (4x 3)
Dimensions (LxWxH) ±3.0 mm	465x770x8 mm
Modular dimensions (LxW)	380x775 mm
Weight	6 kg



E-mail: [info@megasol.ch](mailto:info@megasol.ch)  
 Hotline: +41 62 919 90 90  
[www.megasol.ch](http://www.megasol.ch)



Border modules are electrically compatible with the corresponding base module.  
 For technical reasons of production, despite utmost care, the surface properties and optical colour effect may vary from the basic module.

STC (Standard Test Conditions): irradiance 1000 W/m<sup>2</sup>, cell temperature 25°C, AM 1.5  
 Measuring tolerances ±3 % (Pmpp); ±10 % (Umpp, Impp, %, Uoc, Isc)



**Note:** The instructions in the installation manual must be strictly complied with. Further information about approved utilization of products can be found in the installation manual or can be requested from the technical service.

Megasol partner

Subject to errors and technical modifications.  
 © Megasol Energy Ltd | Version: 06/2025