

# Hi-MO X10 Guardian Anti-Dust

## LR7-72HVHF

### 640~670M



#### Patented Frame Design:

Effectively Reduces Dust Accumulation Impact, Boosting Power Generation by 2%+.



#### Scenario Adaptation:

More suitable for C&I color steel tile roofs and small angle installation scenarios



#### Safe:

Prevent Overheating. Lower temperature under shade 60°C+<sup>1</sup> compare with conventional modules



#### Value-Added:

A+ Anti-Shading<sup>2</sup>, Less Loss.



**Monofacial  
Power Generation**

**15Y** Product Warranty

**30Y** Performance Warranty

#### Complete System and Product Certifications

IEC 61215, IEC 61730

IEC62941: Guideline for module design qualification and type approval

ISO9001: Quality Management System

ISO14001: Environment Management System

ISO45001: Occupational Health and Safety

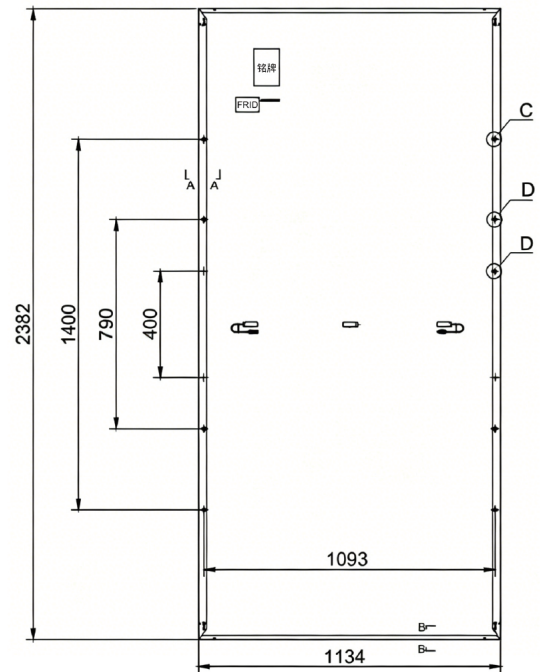
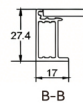
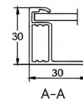
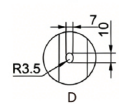
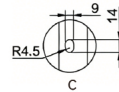


**24.80%**  
 MAX MODULE  
 EFFICIENCY

**1%**  
 FIRST YEAR  
 POWER DEGRADATION

**0.35%**  
 YEAR 2-30  
 POWER DEGRADATION

**-0.26%/°C**  
 BETTER TEMPERATUR  
 COEFFICIENT

 Tolerance:  
 Length: ±2mm  
 Width: ±2mm

**Mechanical Parameters**

Cell Orientation	144 (6×24)
Junction Box	IP68, three diodes
Output Cable	4mm <sup>2</sup> ; +400/-200mm/±1400mm length can be customized
Glass	Dual glass, 2.0+2.0mm semi-tempered glass
Frame	Anodized aluminum alloy frame
Weight	28.5 kg
Dimension	2382×1134×30mm
Packaging	35pcs per pallet / 140pcs per 20'GP / 700pcs per 40'HC

Remark: 17.5m trucks are rated at 30t load. Actual loading quantity is subject to vehicle specs.

**Electrical Characteristics** ·STC: Irradiance1000W/m<sup>2</sup>, Cell Temperature 25°C, AM1.5 (Test uncertainty for Pmax: ±3%)

Module Type	LR7-72HVHF-640M	LR7-72HVHF-645M	LR7-72HVHF-650M	LR7-72HVHF-655M	LR7-72HVHF-660M	LR7-72HVHF-665M	LR7-72HVHF-670M
Testing Condition	STC	STC	STC	STC	STC	STC	STC
Maximum Power (Pmax/W)	640	645	650	655	660	665	670
Open Circuit Voltage (Voc/V)	53.70	53.80	53.90	54.00	54.10	54.20	54.30
Short Circuit Current (Isc/A)	15.13	15.21	15.29	15.37	15.45	15.52	15.60
Voltage at Maximum Power (Vmp/V)	44.36	44.46	44.56	44.66	44.76	44.86	44.96
Current at Maximum Power (Imp/A)	14.43	14.51	14.59	14.67	14.75	14.83	14.91
Module Efficiency(%)	23.69	23.88	24.06	24.25	24.43	24.62	24.80

**Operating Parameters**

Module [T98] Max	70°C
Operational Temperature	-40°C ~ +85°C
Power Output Tolerance	0~3%
Maximum System Voltage	DC1500V (IEC)
Maximum Series Fuse Rating	25A
Nominal Operating Cell Temperature	45±2°C
Protection Class	Class II
Fire Rating	IEC Class C

**Mechanical Loading**

Min Designed Mechanical Load	1600Pa/1600Pa
Front Side Maximum Static Loading	5400Pa
Rear Side Maximum Static Loading	2400Pa
Hailstone Test	25mm Hailstone at the speed of 23m/s

**Temperature Ratings (STC)**

Temperature Coefficient of Isc	+0.050%/°C
Temperature Coefficient of Voc	-0.200%/°C
Temperature Coefficient of Pmax	-0.260%/°C