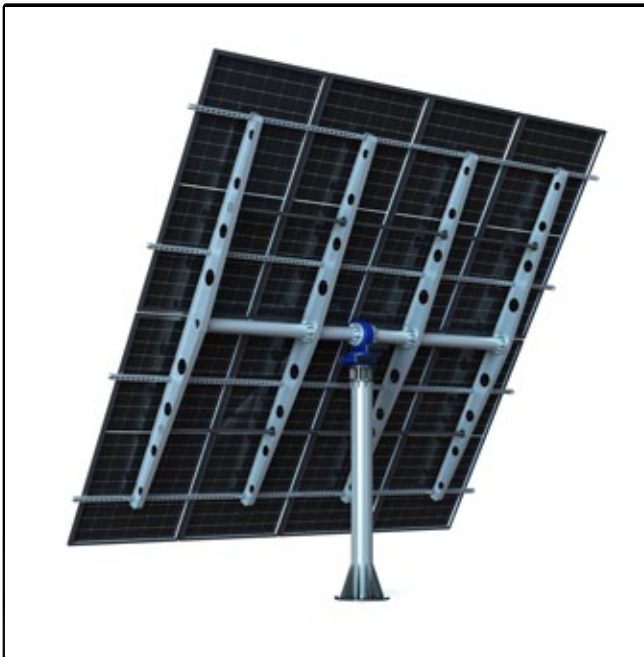


## Dual Axis Solar Tracker

We provide the design, customized manufacture, logistics, and one-stop purchasing of solar trackers, meet requirements of different clients.



### | Dual Axis

## Dual Axis Slew Drive

The dual axis solar tracker is equipped with an astronomical algorithm + GPS controller, which determines the position of the sun in real-time based on the longitude, latitude, and time of the region. Then the dual axis slewing drive rotated horizontally with  $\pm 120^\circ$ , and vertically  $0-60^\circ$ , tracking the sun iat day time, ensuring that sunlight always shines vertically on the solar panel, achieving maximum power generation efficiency.

### | Advantage

## Advantage of Dual Axis Tracker

- Each dual axis solar tracker worked separately, occupying a small area and adapting to the complex terrain.
- Rotate both on horizontal and vertical direction for better effect on tracking the sun.
- The area of solar panels is small, the rotating beam is relatively short, and the swing caused by strong winds is small.



# Dual Axis Solar Tracker

We provide the design, customized manufacture, logistics, and one-stop purchasing of solar trackers, meet requirements of different clients.

## Datasheet

ITEM	VALUE
Products Name	Dual Axis Solar Tracker
Brand	BOFU
Original	China
Life Span	>25 years
Drive Motor	Dual Axis Slew Drive
Tracking method	Astronomical
Daily Power Consumption	$\leq 0.3$ kwh/day
Tracking accuracy	$\leq \pm 1^\circ$
Horizontal Tracking Angle	$\pm 120^\circ$
Pitch Angle	0-60°
Safety Working Wind Speed	17m/s
Maximum Snow Load	1.6KN/sqm
Surface treatment	Hot Deep Galvanize
Communicate	RS485