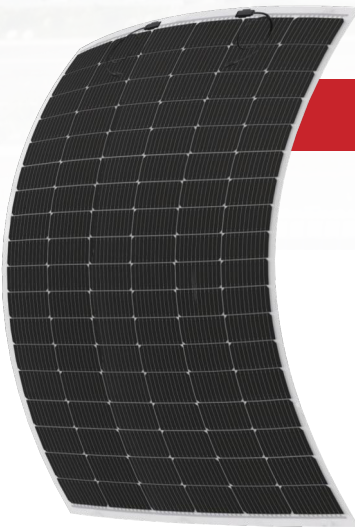




Sunpro Max Series

TOPCon Monofacial Lightweight module

400-410W | **20.70%**
Power Output | Module Efficiency



- Light Weight
- Anti- Micro Crack
- Anti- UV
- Fast-Installation

CERTIFICATE



WARRANTY

Quality Guarantee **12** years | Power Warranty **25** years

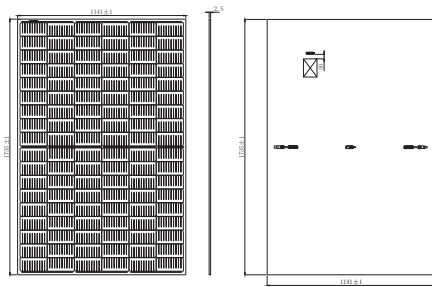


SP(400/410W)-N108M10

STRUCTURAL CHARACTERISTICS

Dimension (L*W*H)	1735x1141x2.5 mm(without junction box)
Weight	5.8kg
Backboard Specification	Backboard (white)
Cell	108 (6*18) 10BB P type single crystalline,silicon/182*91mm
Encapsulat Material	EVA
Frame	None / *option - plastic frame
Weigt Per Unit Area	2.92kg/m ²
Power Per Unit Area	191.6-206.7W/m ²
Connector	MC4 compatible
Junction Box	IP68
Cable Specifications	4mm ² ,400mm or customized by customers
Container loading data	70 pcs/Pallet; 1820pcs/40' HQ 70 pcs/Pallet; 420pcs/20' GP

MODULE DIMENSIONS(MM)



ELECTRIC CHARACTERISTICS

Model of modules	SP400-N108M10	SP405-N108M10	SP410-N108M10
	STC	STC	STC
Power (Pmax/W)	400	405	410
Maximum power voltage (Vmp)	30.85	31.02	31.18
Maximum power current (Imp)	12.99	13.08	13.17
Open circuit voltage (Voc)	36.80	37.00	37.20
Short circuit current (Isc)	13.70	13.76	13.82
Module efficiency	20.20%	20.50%	20.70%

STC (Electrical parameters at standard test conditions (STC:AM=1.5, 1000W/m², Cells Temperature25°C)

NMOT (Irradiance 800W/m², Ambient Temperature 20°C , AM1.5,Wind Speed 1m/s)

ELECTRICAL CHARACTERISTICS WITH 15% REAR SIDE POWER GAIN

Front power Pmax/W	302	306	310
Maximum power voltage (Vmp)	28.70	28.85	29.00
Maximum power current (Imp)	10.55	10.62	10.71
Open circuit voltage (Voc)	34.60	34.80	35.00
Short circuit current (Isc)	10.96	11.01	11.08

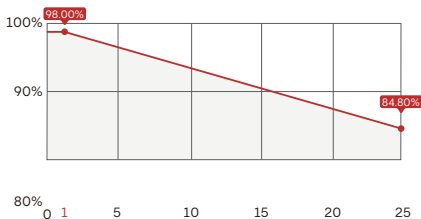
OPERATING PARAMETERS

Power tolerance (W)	(0~+5W)
Maximum system voltage (V)	DC1500V(IEC)
Maximum rated fuse current (A)	20A
Current operating temperature (C)	-40~+85°C
Mechanical load	+3600Pa/-1600Pa

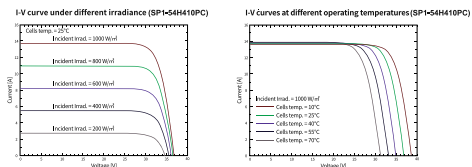
TEMPERATURE CHARACTERISTICS

Temp. Coeff. of Isc (TK Isc)	0.02% / °C
Temp. Coeff. of Voc (TK Voc)	-0.28% / °C
Temp. Coeff. of Pmax (TK Pmax)	-0.38% / °C
Normal Operating Cell Temperature	45 ± 2°C

LINEAR PERFORMANCE GUARANTEE FOR 30 YEARS



I-V CHARACTERISTICS AT DIFFERENT IRRADIATION



Zhejiang Sunpro Power Technology Co., Ltd

Add: Qinggang Industrial Zone, Yuhuan City, Zhejiang Province

Tel: +86 0576-80730906 E-mail: info@sunpropower.com Website: www.sunpropower.com

*The above parameters are for reference only, and the actual parameters of the factory shall prevail