



UKSOL

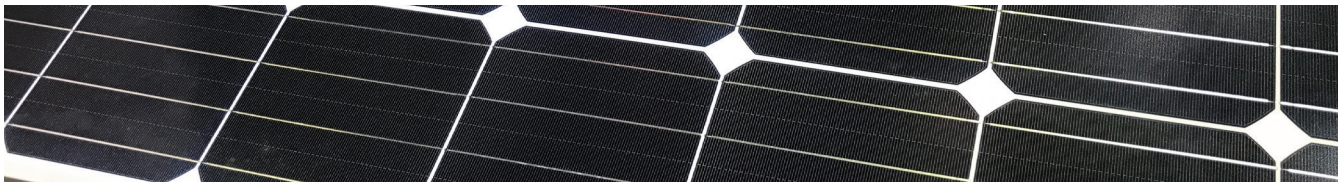


**30 YEAR
BRITISH
WARRANTY**

A BRITISH BRAND OF HIGH QUALITY SOLAR MODULES

UKSOL solar PV modules are always produced with the latest high quality grade A solar cells to deliver the maximum return on your investment. Every UKSOL solar module comes with a British 12 year product warranty and a 30 year performance warranty. Technical and warranty support is provided by our dedicated customer care team based near London.

MODEL UKSOL UKS-6M30 MONO PERC MODULE



ADVANCED PERFORMANCE & PROVEN ADVANTAGES



High module conversion efficiency up to 18.44% by using Passivated Emitter Rear Contact (PERC) technology.



Low degradation and excellent performance under high temperature and low light conditions.



Robust aluminum frame ensures the modules withstand wind loads up to 2400Pa and snow loads up to 5400Pa.



Positive power tolerance of 0 ~ +3 %.
High ammonia and salt mist resistance.



PID Free. Fire tested. Risk free procurement and support from the UK.



Fully automated production | Special AR gloss coating 4 or 5 bus bars for best performance

QUALITY CERTIFICATES



IEC61215, IEC61730, IEC62716, IEC61701, InMetro (Brazil), Retie (Colombia), special PI-Institut Berlin test report



ISO9001:2008: Quality management system
ISO14001:2004: Environmental management system
OHSAS18001:2007: Occupational health and safety management system

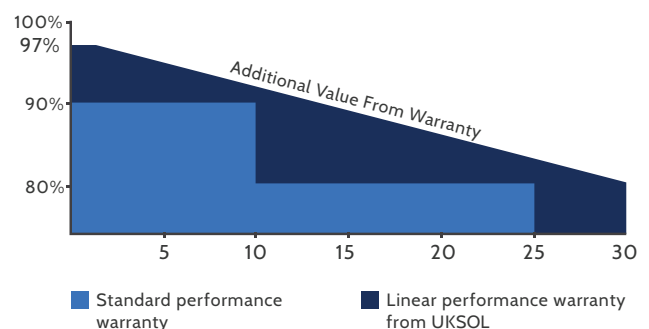
BRITISH WARRANTIES



12 year product warranty.



Limited power warranty: 12 years 91.2% of the nominal power output, 30 years 80.6% of the nominal power output.



LOW RISK BRITISH
PROCUREMENT



BRITISH TECHNICAL
SUPPORT



ALWAYS GRADE
"A" CELLS



BRITISH QUALITY
STANDARDS



ELECTRICAL CHARACTERISTICS AT STC

Nominal Power (Pmax)	275W	280W	285W	290W	295W	300W
Open Circuit Voltage (Voc)	38.3V	38.4V	38.5V	38.6V	38.7V	38.8V
Short Circuit Current (Isc)	9.24A	9.37A	9.49A	9.62A	9.75A	9.88A
Voltage at Nominal Power (Vmp)	31.2V	31.3V	31.4V	31.5V	31.6V	31.7V
Current at Nominal Power (Imp)	8.82A	8.95A	9.08A	9.21A	9.34A	9.47A
Module Efficiency (%)	16.90	17.21	17.52	17.83	18.13	18.44
Operating Temperature	-40°C to +85°C					
Maximum System Voltage	1000V DC					
Fire Resistance Rating	Type 1 (UL 1703)/Class C (IEC61730)					
Maximum Series Fuse Rating	15A					
STC : Irradiance 1000W/m², Cell Temperature 25°C, Air Mass 1.5						

ELECTRICAL CHARACTERISTICS AT NOCT

Nominal Power (Pmax)	204W	207W	211W	215W	218W	222W
Open Circuit Voltage (Voc)	35.3V	35.4V	35.5V	35.6V	35.7V	35.8V
Short Circuit Current (Isc)	7.48A	7.59A	7.69A	7.79A	7.90A	8.00A
Voltage at Nominal Power (Vmp)	28.4V	28.5V	28.6V	28.7V	28.8V	28.9V
Current at Nominal Power (Imp)	7.19A	7.27A	7.38A	7.50A	7.57A	7.68A
NOCT: Irradiance 800W/m ² , Ambient Temperature 20°C, Wind Speed 1 m/s						

MECHANICAL CHARACTERISTICS

Cell Type	Mono PERC 156x156mm (6x6 inches)
Number of Cells	60 (6x10)
Module Dimensions	1640x992x35mm (64.57x39.06x1.38 inches)
Weight	18kg (39.7 lbs)
Front Cover	3.2mm tempered glass with AR coating
Frame	Anodized aluminium alloy
Junction Box	IP67, 3 diodes
Cable	4mm ² (0.006 inches ²), 900mm (35.43 inches)
Connector	MC4 or MC4 Compatible

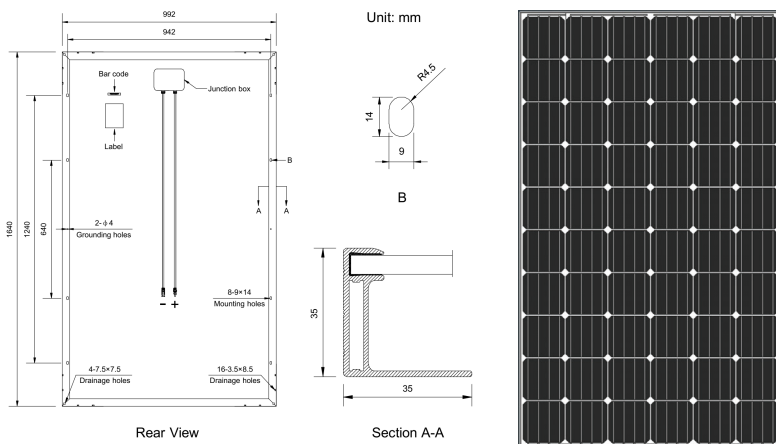
TEMPERATURE CHARACTERISTICS

Nominal Operating Cell Temperature (NOCT)	45°C ± 2°C
Temperature Coefficient Of Pmax	-0.41% / °C
Temperature Coefficient Of Voc	-0.31% / °C
Temperature Coefficient Of Isc	0.05% / °C

PACKAGING

Standard Packaging	30 pcs / Pallet
Module Quantity per 20' Container	360pcs
Module Quantity per 40' Container	840/896 HQ

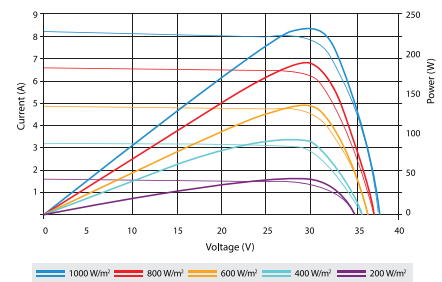
ENGINEERING DRAWINGS



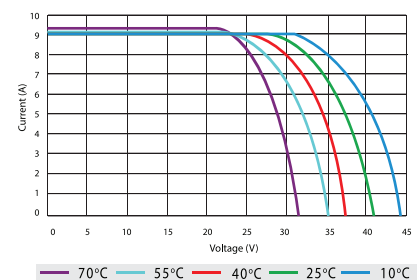
Specifications in this datasheet are subject to change without prior notice.

Also available in all-black.

IV CURVES



Current-Voltage & Power-Voltage Curves At Different Irradiances



Current-Voltage Curves At Different Temperatures