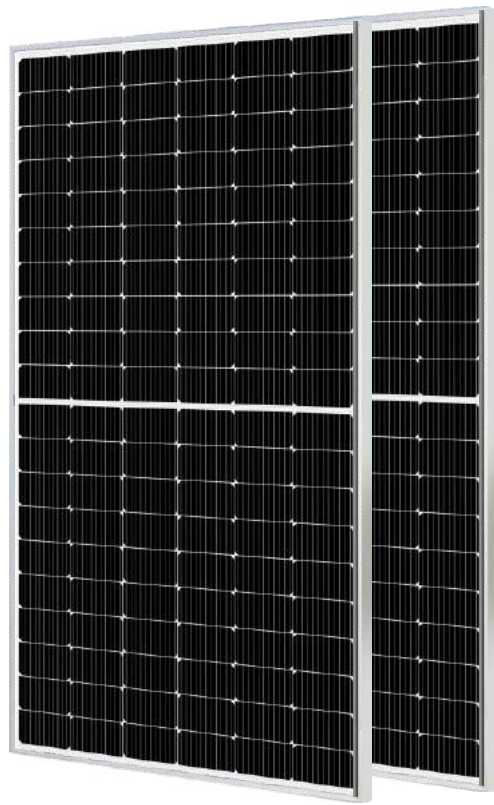


Module Picture



QN-182M45034

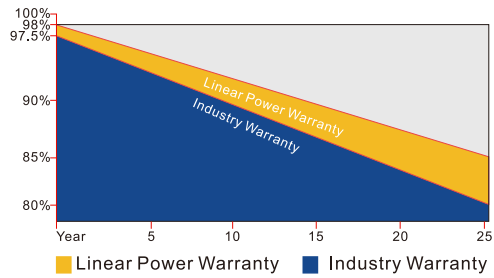
Mono Half-cut Single/ Module 430-455/MB

LCOE save 6-8%

- ↓6% Saving logistics cost
- ↓7% Saving cable cost
- ↓8% Saving bracket cost
- ↓9% Saving labor cost

First-class Quality Assurance

- 10-year warranty for material and technology
- 25-year linear power output warranty

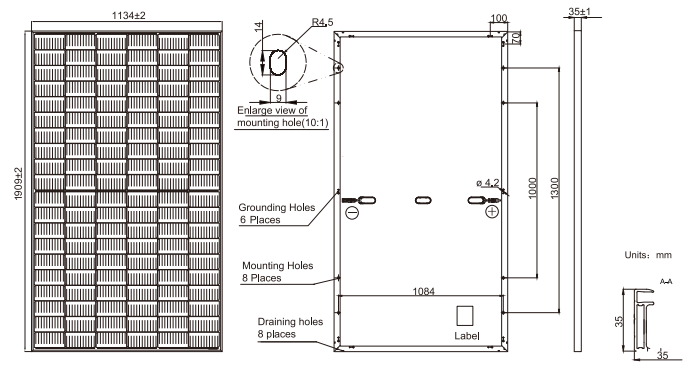


Comprehensive Certificates

- IEC61215/IEC61701/IEC61730
- ISO 9001:2015 Quality Management System
- ISO 45001:2018 Occupational health and safety management system
- ISO 14001:2015 Environmental Management System



Mechanical Diagrams



PS: Frame color and cable length can be customized

Specifications

Solar Cell(Type/Size)	MONO(182mm)
Solar Cells Number	120pcs(6*10)
Dimensions	1909×1134×35mm
Weight	23.9Kg/Pcs
Structure	3.2 Glass + EVA film + Back
Frame	Anodized Aluminum Alloy
Junction Box	IP68 · 3*Bypass Diode
Cable Cross Section Size	4.0mm²,(+)300mm/(-)400mm
Mechanical Load	Front 5400Pa/Back 2400Pa
Packing Number	31Pcs/Pallet
Packing Volume	2.834Cbm/Pallet
40'HQ Container	744Pcs

Electrical Parameters at STC

Module Type	QN430M	QN435M	QN440M	QN445M	QN450M	QN455M
Rate Maximum Power(Pmax/W)	430	435	440	445	450	455
Module Efficiency(%)	19.90	20.10	20.30	20.60	20.80	21.10
Open Circuit Volatge(Voc/V)	40.65	40.80	40.95	41.10	41.25	41.40
Short Circuit Current(Isc/A)	13.59	13.67	13.74	13.82	13.89	13.97
Voltage at Pmax(Vmp/V)	33.89	30.09	34.28	34.48	34.67	34.87
Current at Pmax(Imp/A)	12.69	12.77	12.84	12.91	12.98	13.05
Power Tolerance	0~+5w					
Temperature Coefficient of Isc	+0.046%/°C					
Temperature Coefficient of Voc	-0.276%/°C					
Temperature Coefficient of Pmax	-0.350%/°C					
STC	Irradiance 1000W/m² Cell Temperature 25°C AM1.5					

Remark: Electrical data in this catalogue does not refer to a single module, and it's not part of the offer. It only serves for the comparison among different module types.

Electrical Parameters at NOCT

Module Type	QN430M	QN435M	QN440M	QN445M	QN450M	QN455M	Operating Conditions
Rate Maximum Power(Pmax/W)	327	330	333	336	340	343	Operating Temperature -40~+85°C
Open Circuit Voltage(Voc/V)	38.15	38.28	38.40	38.53	38.65	38.77	Maximum System Voltage 1500VDC
Short Circuit Current(Isc/A)	10.91	10.95	10.99	11.03	11.08	11.12	NOCT 45±2°C
Voltage at Pmax(Vmp/V)	31.89	32.05	32.19	32.35	32.51	32.67	Fireproof Performance Glass C
Current at Pmax(Imp/A)	10.26	10.30	10.35	10.40	10.46	10.51	Maximum Series Fuse 25A
NOCT: Irradiance 800W/m² Ambient Temperature 20°C Wind at 1m/S AM1.5							Temperature Coefficient of Voc -0.276%/K
							Temperature Coefficient of Isc +0.046%/K

Characteristics

