



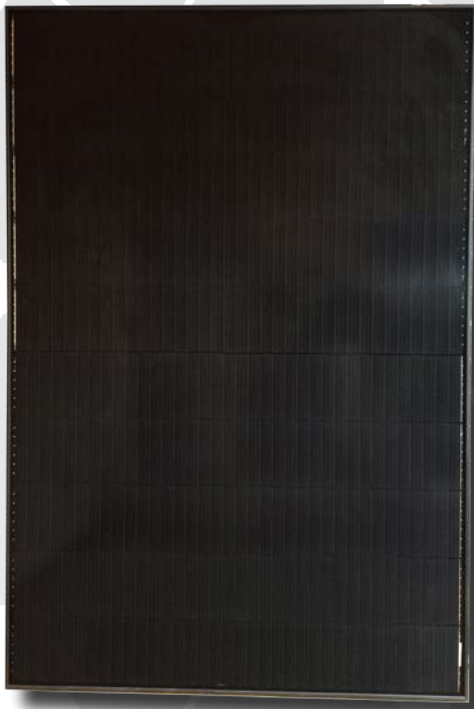
Product
Warranty



Linear Output
Warranty

X-CHROS Monocrystalline PERC High Efficiency SHINGLED

380 - 385 - 390 - 395 Wp



Shingled solar cells



Positive Tolerance



High Voltage 1500 Vdc



15% Greater Return on Projects



Significantly Reduced Hot-Spot Effect



Improved Reliability and Durability

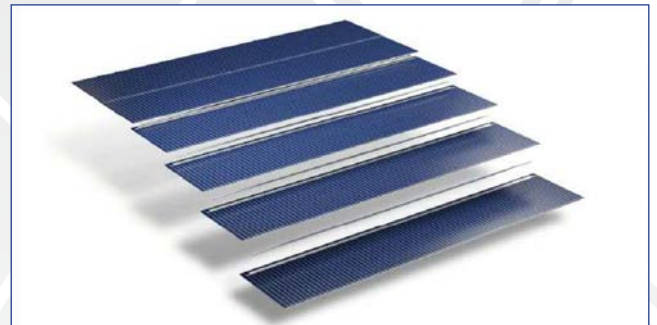


21.3 % max efficiency



Fire reaction Class 1

The new photovoltaic modules X-CHROS is one of a wide range of products made by Sunerg and it is manufactured according to IEC 61215, IEC 61730 standard and CE. PERC Shingled Technology provides ultra-high efficiency with better performance in low irradiation. Maximizes installation capacity in limited space



Shingled module

CORRESPOND TO

IEC 61215 | IEC 61730 | PV CYCLE | CE |

UNI EN ISO 9001:2008

UNI EN ISO 14001:2004

UNI EN BS OHSAS 18001:2007

| Quality management system

| Standards for environmental management system

| International standards for occupational health and safety

ELECTRICAL DATA (STC)

		XMCH66380B+H	XMCH66385B+H	XMCH66390B+H	XMCH66395B+H
Open circuit Voltage	(Voc)	49.10 V	49.30 V	49.30 V	49.40 V
Voltage at Pmax.	(Vmp)	40.60 V	40.80 V	40.80 V	40.90 V
Short-circuit current	(Isc)	9.93 A	9.98 A	10.03 A	10.07 A
Current at Pmax.	(Imp)	9.36 A	9.44 A	9.56 A	9.66 A
Peak Power (Pmax) Tolerance 0/+3%		380Wp	385 Wp	390 Wp	395 Wp
Module Efficiency		20.30%	20.50%	20.80%	21.10%
Maximum voltage		1500 V DC	1500 V DC	1500 V DC	1500 V DC
Maximum series fuse rating		20A	20A	20A	20A
Operating Temperature		-40°C - +85°C	-40°C - +85°C	-40°C - +85°C	-40°C - +85°C

Tolerance electric measurement $\pm 3\%$

*STC (Standard test conditions)

Irradiance 1000 w/m², module temperature 25°C, AM= 1.5

TEMPERATURE COEFFICIENT

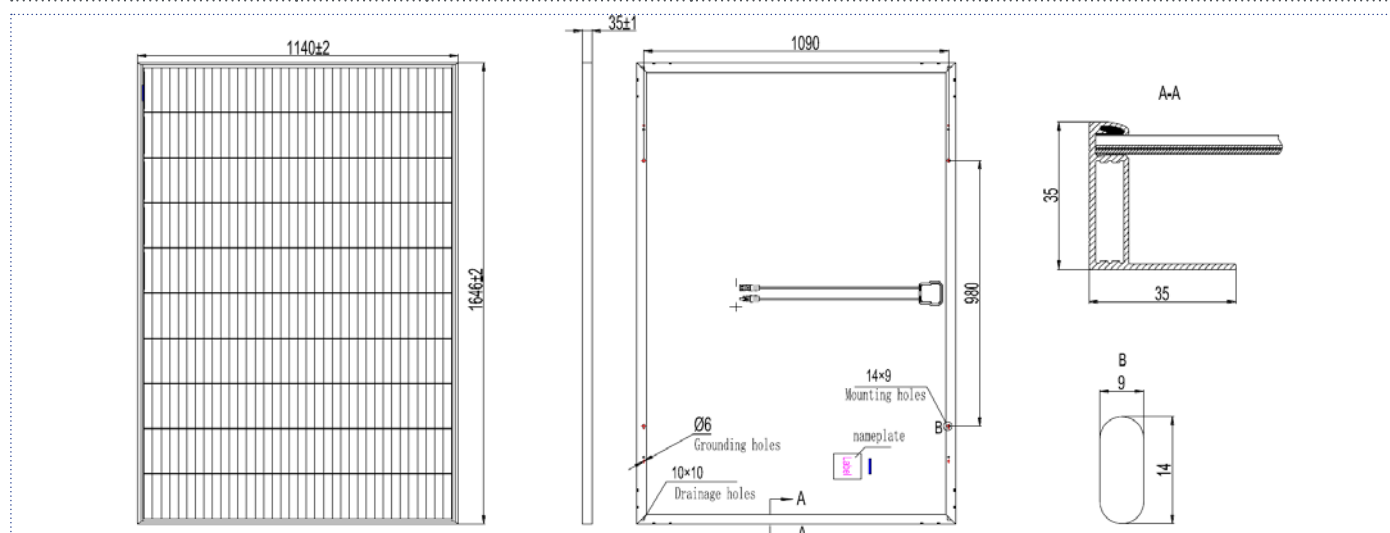
NMOT	42.3°C \pm 2°C
Pmax Temperature Coefficient	-0.34%/ °C
Voc Temperature Coefficient	-0.27%/ °C
Isc Temperature Coefficient	0.04% / °C

MECHANICAL CHARACTERISTIC

Max. surface load capacity (Pa)	5400
Dimensions (mm)	1646 x 1140 x 35
Weight (Kg)	20.5
Encapsulation	EVA
Cells	158.75x158.75 PERC
Backsheet	High weatherability backsheet

PAKAGING CONFIGURATION

Modules per pallet	31
Pallets per container 40'GP	28
Modules per Container	868



GENERAL INFORMATION

Glass	AR coating tempered glass, 3.2mm
Frame	Black Anodized Aluminum alloy
Junction Box	IP67, 3 Bypass diodes
Output Cable - connectors	4.0mm ² , lenght 1000 mm - MC4 Compatible