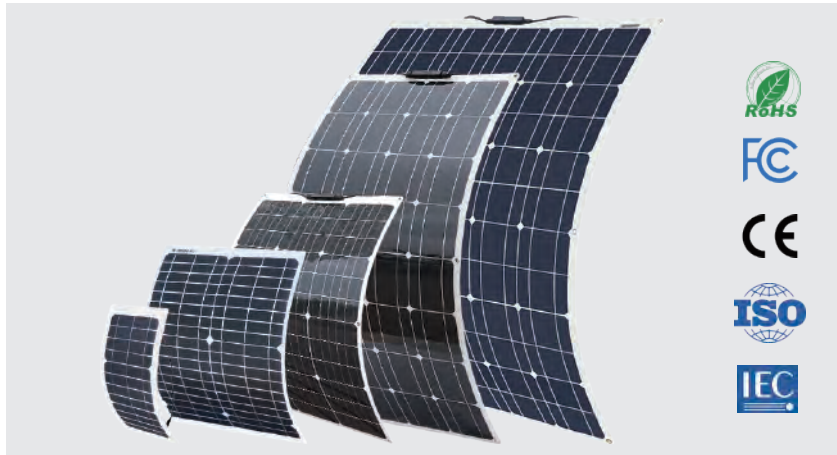


Xinpuguang@_Flexible Series Solar Panel



Xinpuguang@_Flexible Series solar panel is a kind of new and creative solar panel in the solar industry. Solar panels are certified by FCC, RoHS, CE, ISO, IEC to ensure safety, reliability, high quality, energy-saving, and environmental protection. It uses high-efficiency Monocrystalline solar cells that offer higher efficiency up to 21% or more than traditional solar in sunny weather conditions. This bendable solar panel is thin and lightweight, easy to transport and remove.

Xinpuguang@_Flexible系列太阳能电池板是太阳能行业的一种新型创意太阳能电池板。太阳能电池板通过FCC, RoHS, CE, ISO, IEC认证, 以确保安全可靠, 品质优良, 并且节能环保。它使用高效单晶太阳能电池, 在阳光充足的天气, 其光电转换效率高达 21%以上。这种可弯曲的太阳能电池板厚度小、重量轻, 易于携带和运输。

☆ Features 特征



【Good weather resistance】

According to the size of the flexible solar panels, they are packaged with TPT/PET/ETFE, EVA, and other materials with excellent weather resistance. They are matched with sealed junction boxes, photovoltaic special cables, and connectors. The panels are good weather-resistant and have excellent outdoor performance and longevity.

【耐候性好】

柔性太阳能电池板根据面积大小, 分别采用耐候性优异的TPT/PET/ETFE、EVA等材料进行封装, 搭配密封性好的接线盒, 使用光伏专用电缆和连接器, 使得整个太阳能电池板耐候性好, 具有卓越的户外性能和使用寿命。

【Well waterproof】

Suitable for surface installation in RVs, yachts, boats, and many water activity types of equipment. The panel is especially suitable for installation and use in places with a certain arc on the surface.

【防水性好】

适用于房车、游艇、船只和许多水上活动器材和设备表面安装使用。该面板特别适合于表面有一定弧度的场所安装使用。





【Good bend ability】

The solar panel can be curved to a maximum 30 degree arc. Xinpuguang@_Flexible Series solar panel is capable of meeting a wide range of applications, such as on the curved roof.

【弯曲性好】

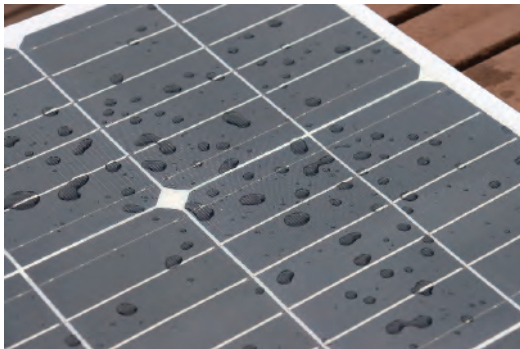
太阳能板最大可弯曲30度弧度。Xinpuguang@_Flexible 系列太阳能电池板能够满足广泛的应用，例如在弧形屋顶上。

【Easy installation】

Spaced metal grommet mounting holes are available to attach fasteners. It can also be easily affixed by adhesives, silicon glues, double sticky tape, zip ties, or velcro.

【简易安装】

间隔的金属扣眼安装孔可用于连接紧固件。它也可以很容易地用粘合剂、硅胶、双面胶带、拉链或魔术贴固定于安装平面。



【Self-Cleaning】

Easy to clean. Be free from maintenance, rainfall can easily wash away dust and other foreign objects on the surface due to its nonstick surface.

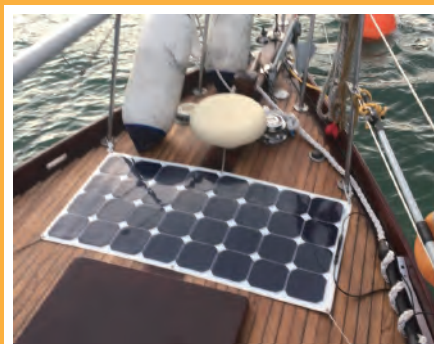
【自清洁】

易于清洁。免维护，由于其不粘表面，雨水可以轻松冲刷掉表面的灰尘等异物。

☆ Application 应用

Xinpuguang@_Flexible Series solar panel use high-efficiency Monocrystalline cell with a conversion efficiency of over 19.8%, can be bent 30 degrees, and can be installed on the curved surface. 80% lighter than glass solar panels and only 3mm thick, easy to carry, easy to carry, transport and install. Applied to Golf cars, Yachts, Boats, RVs, Caravans, Electric vehicles, Travel tourism cars, Patrol cars, roofs, camping, roof power generation, tents, ships, etc.

Xinpuguang@_Flexible系列太阳能电池板采用高效单晶电池，转换效率19.8%以上，可弯曲30度，可安装在曲面上。比玻璃太阳能电池板轻80%，厚度仅为3mm，便于携带、易于运输、易于安装。适用于高尔夫车、游艇、船、房车、大篷车、电动车、旅游观光车、巡逻车、屋顶、露营、屋顶发电、帐篷、船舶等。



Flexible solar panel 柔性太阳能板

Electrical parameter | STC 电性能参数 (5w~25w)

Rated Power 功率输出	Pmax(W)	5	10	20	25
Model No. 产品型号	/	PG-FSP5W	PG-FSP10W	PG-FSP20W	PG-FSP25W
Cell type 电池片类型	/	125 Mono	156 Mono	125 Mono	156 Mono
Operating Voltage 最大功率点的工作电压	Vmp(V)	12	18	18	18
Operating Current 最大功率点的工作电流	Imp(A)	0.42	0.56	1.11	1.39
Open Circuit Voltage 开路电压	Voc(V)	14.4	21.6	21.6	21.6
Short Circuit Current 短路电流	Isc(A)	0.46	0.61	1.22	1.53
Performance Tolerance 功率公差	(%)	±5%	±5%	±5%	±5%
Boundary dimension 外形尺寸	mm	285*155*3	330*230*3	420*280*3	465*340*3

Electrical parameter | STC 电性能参数 (25w~50w)

Rated Power 功率输出	Pmax(W)	25	35	40	50
Model No. 产品型号	/	PG-FSP25W	PG-FSP35W	PG-FSP40W	PG-FSP50W
Cell type 电池片类型	/	125 Mono	125 Mono	156 Mono	125 Mono
Operating Voltage 最大功率点的工作电压	Vmp(V)	16	18	18	16
Operating Current 最大功率点的工作电流	Imp(A)	1.56	1.94	2.22	3.12
Open Circuit Voltage 开路电压	Voc(V)	19.2	21.6	21.6	19.2
Short Circuit Current 短路电流	Isc(A)	1.72	2.14	2.44	3.34
Performance Tolerance 功率公差	(%)	±5%	±5%	±5%	±5%
Boundary dimension 外形尺寸	mm	555*277*3	535*415*3	530*500*3	1060*277*3

Electrical parameter | STC 电性能参数 (50w~75w)

Rated Power 功率输出	Pmax(W)	50	55	60	75
Model No. 产品型号	/	PG-FSP50W-2	PG-FSP55W	PG-FSP60W	PG-FSP75W
Cell type 电池片类型	/	156 Mono	166 Mono	156 Mono	156 Mono
Operating Voltage 最大功率点的工作电压	Vmp(V)	18	20	19.5	16
Operating Current 最大功率点的工作电流	Imp(A)	2.78	2.75	3.08	4.69
Open Circuit Voltage 开路电压	Voc(V)	21.6	24	23.4	19.2
Short Circuit Current 短路电流	Isc(A)	3.06	3.03	3.38	5.16
Performance Tolerance 功率公差	(%)	±5%	±5%	±5%	±5%
Boundary dimension 外形尺寸	mm	680*500*3	910*365*3	740*500*3	910*500*3

Electrical parameter | STC 电性能参数 (80w~100w)

Rated Power 功率输出	Pmax(W)	80	90	100	100
Model No. 产品型号	/	PG-FSP80W	PG-FSP90W	PG-FSP100W-1	PG-FSP100W-2
Cell type 电池片类型	/	156 Mono	156 Mono	166 Mono	125 Mono
Operating Voltage 最大功率点的工作电压	Vmp(V)	18	18	19.8	18
Operating Current 最大功率点的工作电流	Imp(A)	4.44	5.0	5.05	5.56
Open Circuit Voltage 开路电压	Voc(V)	21.6	21.6	23.76	21.6
Short Circuit Current 短路电流	Isc(A)	4.89	5.5	5.56	6.1
Performance Tolerance 功率公差	(%)	±5%	±5%	±5%	±5%
Boundary dimension 外形尺寸	mm	1040*500*3	770*670*3	1055*530*3	1200*540*3

Electrical parameter | STC 电性能参数 (120w~150w)

Rated Power 功率输出	Pmax(W)	120	150	150	150
Model No. 产品型号	/	PG-FSP120W	PG-FSP150W-1	PG-FSP150W-2	PG-FSP150W-3
Cell type 电池片类型	/	166 Mono	166 Mono	125 Mono	156 Mono
Operating Voltage 最大功率点的工作电压	Vmp(V)	21.5	29.7	22	15
Operating Current 最大功率点的工作电流	Imp(A)	5.58	5.05	6.82	10
Open Circuit Voltage 开路电压	Voc(V)	25.8	35.6	26.4	18
Short Circuit Current 短路电流	Isc(A)	5.97	5.4	7.5	11
Performance Tolerance 功率公差	(%)	±5%	±5%	±5%	±5%
Boundary dimension 外形尺寸	mm	1130*530*3	1040*790*3	1435*545*3	995*830*3

Electrical parameter | STC 电性能参数 (160w~200w)

Rated Power 功率输出	Pmax(W)	160	170	180	200
Model No. 产品型号	/	PG-FSP160W	PG-FSP170W	PG-FSP180W	PG-FSP200W
Cell type 电池片类型	/	156 Mono	156 Mono	125 Mono	156 Mono
Operating Voltage 最大功率点的工作电压	Vmp(V)	18	18	20	18
Operating Current 最大功率点的工作电流	Imp(A)	8.89	9.94	9.0	11.11
Open Circuit Voltage 开路电压	Voc(V)	21.6	21.6	24	21.6
Short Circuit Current 短路电流	Isc(A)	9.78	10.39	9.9	12.22
Performance Tolerance 功率公差	(%)	±5%	±5%	±5%	±5%
Boundary dimension 外形尺寸	mm	1470*660*3	1500*665*3	1305*825*3	1470*660*3

*It's a part of the specifications and models of the solar panels. We can design and provide products according to the customer's demand.

*以上为我们公司的一部分太阳能板的规格及型号。我们可以根据客户要求设计及定制。

Structural performance 结构性能

Solar cell 太阳能电池片	125*125 Mono / 156*156Mono
Surface 面板	ETFE/PET/TPT
EVA(EVA)	Through the Rhine test 通过莱茵测试
Junction Box 接线盒/稳压盒	MC4Junction Box / Voltage regulator box
Output Interface 输出接口	USB /DC/MC4

Temperature characteristics 温度特性

Standard Test Conditions 电池标称工作温度 (NOTC)	45±2°C
Short Circuit Current Temp 温度系数 (Sic)	+0.050%/°C
Open Circuit Voltage Temp 温度系数 (Vic)	-0.30%/°C
Max. Power Temp 温度系数 (Plax)	-0.39%/°C

Limit parameter 极限参数

Operating Temperature 工作温度	-40~+85°C
Max.System Voltage 最大系统电压	1000V DC

* Standard test conditions measured values (irradiance 1000 W/m², cell temperature 25 °C, atmospheric mass AM1.5)

* 标准测试条件：（大气质量 AM1.5，辐照度 1000W/m²，电池温度25°C）下的测量值

Complete quality management system and product certification

完整的质量管理体系与产品认证

ISO 9001:2015: ISO 质量管理体系

ISO 14001: 2015: ISO 环境管理体系

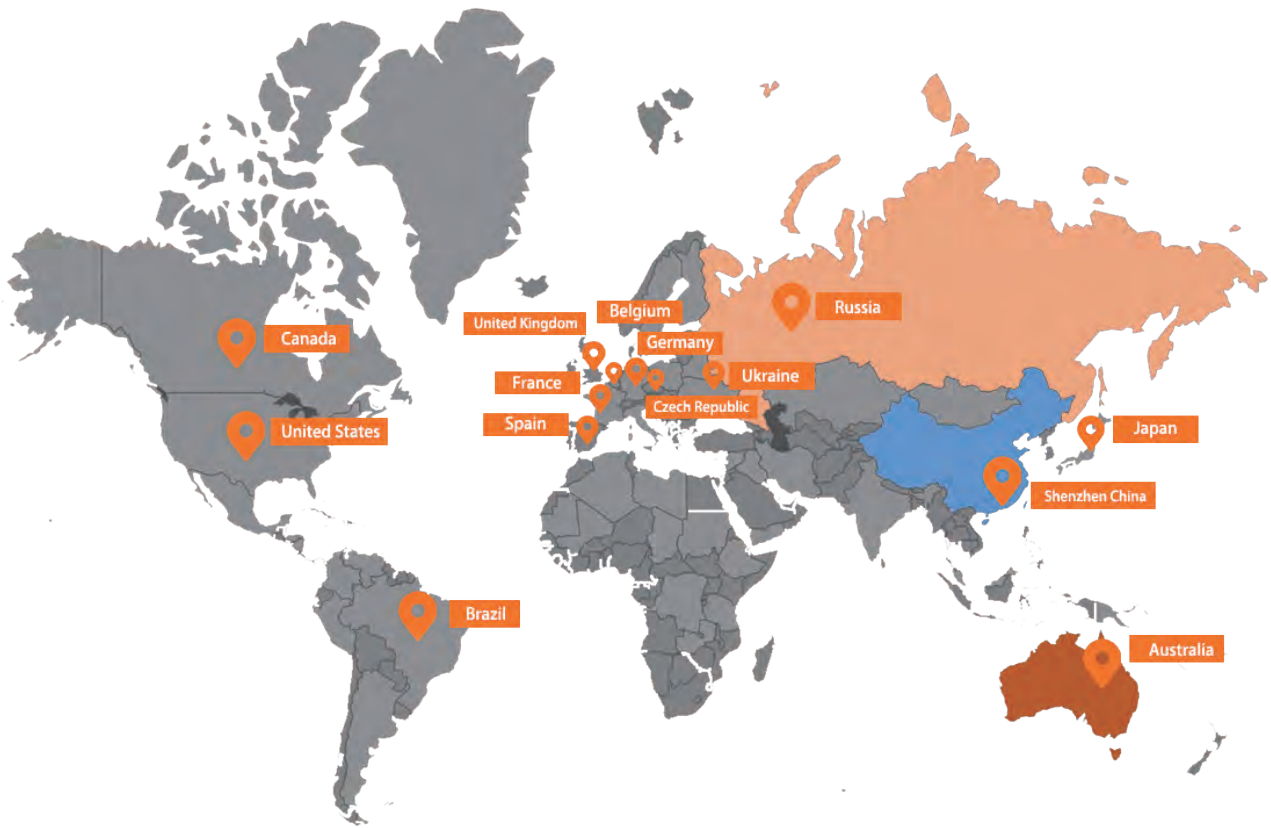
RoHS EBO1909058-V150 (EU)2015/ 863 限值要求

IEC 61215 2nd Edition (2005)

EMC 2004/108/EC BCTC-141212557



Global Markets Distribution



Contact us:

Company: Shenzhen Solarparts Inc.

Shenzhen Puguang Solar Energy Co.,Ltd.

Address: 4th Flor,Building A3,Xinglian Industrial Park, Pingxing North Road,
PinghuTown,Longgang District, Shenzhen 518112 China.

Phone: +86-755-28720791 Fax: +86-755 85233441 Mobile: +86-13923729619

Website: www.isolarparts.com Email: Philip@isolarparts.com



QR Code for Official Website
www.isolarparts.com



QR Code for On-line Shopping Sotore
www.xinpuguang solar.com