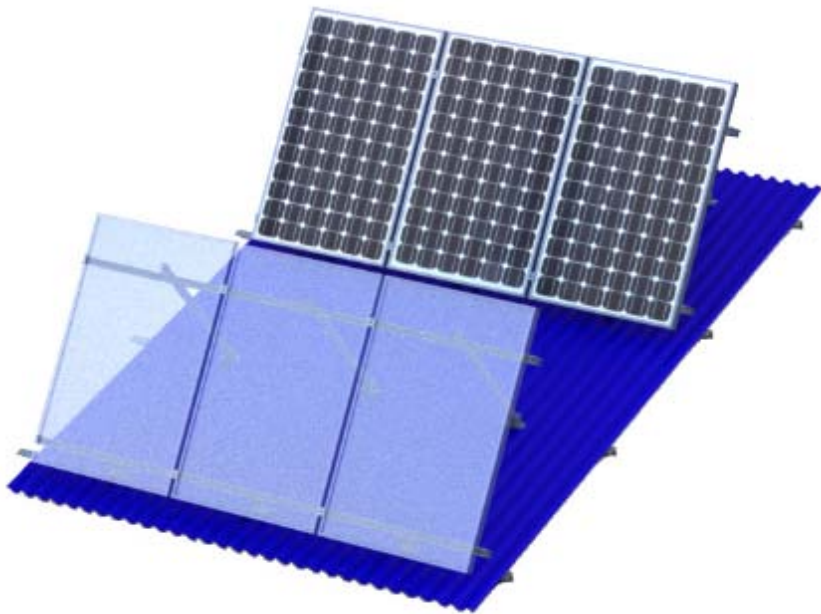




# Tilt Roof Mount



Eon's Universal Tilt Mount solution is applicable for installations on flat roofs or on the ground, with adjustable tilt angle range from 10 to 60 degree.

Eon Tilt System is quick and easy to install, and allows solar panels to be installed in the angle ranges from 10 to 15 degrees, 15 to 30 degrees and 30 to 60 degrees.

To simplify installation, components are pre-assembled before delivery to site.

- Available tilt angle 10–15°, 15–30° and 30–60°
- Easy to fold, save storage and transportation
- Simple and fast installation
- Easy access to components and connections