

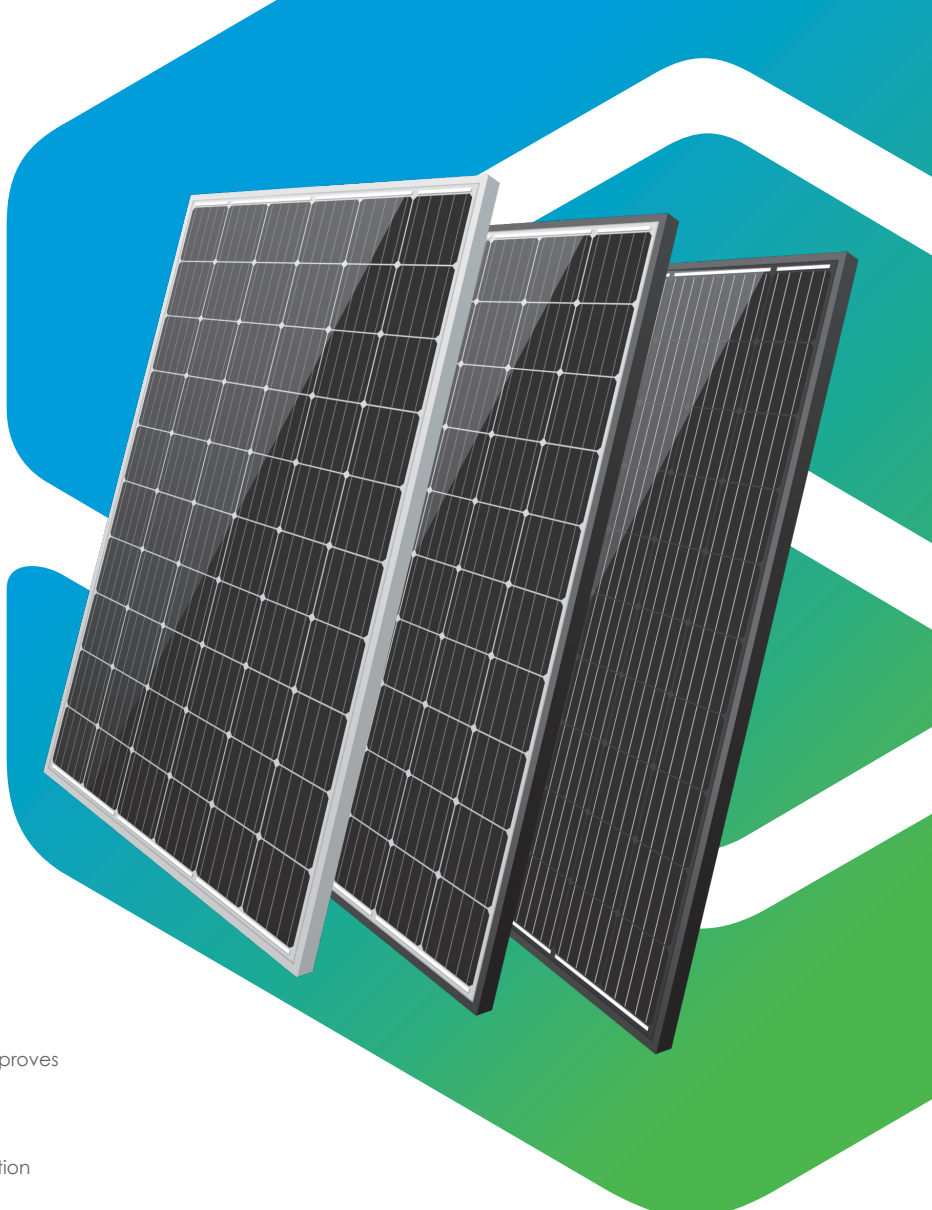


290W~310W

Monocrystalline PERC PV Module

UZ156M-60 Series 290~295W

UZ156M-PERC-60 Series 300~310W



KEY FEATURES



Innovative Solar Cells

Five busbar Monocrystalline PERC cell technology improves module efficiency



PID Free

Reinforced cell prevents potential induced degradation



Low-Light Performance

Advanced glass technology improves light absorption and retention



Excellent Mechanical Load Capability

Certified to withstand: snow load (6000Pa) and wind (3600Pa)



Weather Resistance

Certified for salt mist and ammonia resistance



Maximum System Voltage

Up to IEC1500V system voltage, saving on BoS costs

MANAGEMENT SYSTEM

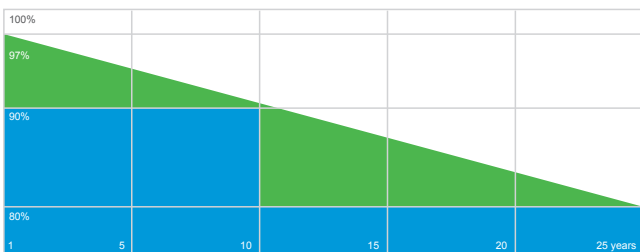
- ISO9001:2008 Quality Standards
- ISO14001:2004 Environmental Standards
- OHSAS18001 Occupational Health & Safety Standards

INSURANCE



LINEAR PERFORMANCE WARRANTY

• 12-year Workmanship Warranty • 25-year Linear Performance Warranty

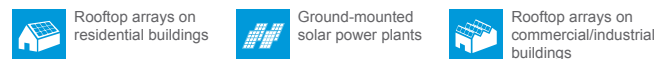


■ UZON Linear Power Warranty ■ Industry Warranty

PRODUCT CERTIFICATES



THE IDEAL SOLUTION FOR:



Anhui Uzon Photovoltaic Technology Co., Ltd

www.uzon.com.cn

ELECTRICAL SPECIFICATIONS

Module Type	UZ156M 290-60		UZ156M 295-60		UZ156M 300-60		UZ156M 305-60		UZ156M 310-60	
	STC	NOCT	STC	NOCT	STC	NOCT	STC	NOCT	STC	NOCT
Rated output (Pmpp/Wp)	290	213.1	295	216.8	300	220.5	305	224.1	310	227.8
Rated voltage (Vmpp/V)	32.39	29.79	32.63	30.01	32.87	30.24	33.07	30.42	33.27	30.60
Rated current (Impp/A)	8.96	7.15	9.05	7.22	9.13	7.29	9.23	7.36	9.32	7.44
Open circuit voltage (Voc/V)	39.97	36.77	40.08	36.87	40.19	36.97	40.30	37.07	40.41	37.17
Short circuit current (Isc/A)	9.53	7.60	9.58	7.64	9.63	7.68	9.68	7.72	9.73	7.76
Module efficiency(%)	17.80%		18.10%		18.40%		18.70%		19.00%	

Standard Test Conditions (STC): irradiance 1,000 W/m²; AM 1.5; module temperature 25°C. Tolerance of Pmpp: 0~+3%. Measuring uncertainty of power: ±3%. Certified in accordance with IEC 61215, IEC 61730-1/2 and UL 1703.

Normal Operating Cell Temperature (NOCT): irradiance 800W/m²; wind speed 1 m/s; cell temperature 45°C; ambient temperature 20°C. Measuring uncertainty of power: ±3%. Certified in accordance with IEC 61215, IEC 61730-1/2 and UL 1703.

TEMPERATURE CHARACTERISTICS

Temperature coefficient (Pmpp)	-0.409%/°C
Temperature coefficient (Isc)	+0.0409%/°C
Temperature coefficient (Voc)	-0.308%/°C
Operating Temperature	-40~+85 °C
NOCT Temperature	45±2 °C

MECHANICAL SPECIFICATIONS

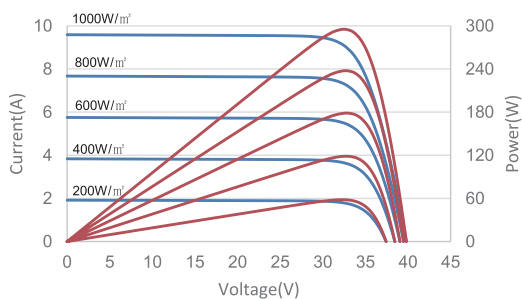
Cell Type	Mono crystalline 156.75 x 156.75 mm (60pcs)
Outer dimensions (L x W x H)	1648 x 990 x 35 mm
Weight	18.3Kg
Frame	Anodized aluminium alloy (silver or black)
Module composition	Glass / EVA / Backsheet (white or black)
Front glass	3.2 mm AR coating tempered glass, low iron
Cable	Diameter 4 mm ² , Length 900mm
Fire performance	Class C (IEC) or Type 1 (UL)
Connector type	MC4 compatible
Junction Box	IP67
Maximum mechanical test load	6000 Pa

PACKING CONFIGURATIONS

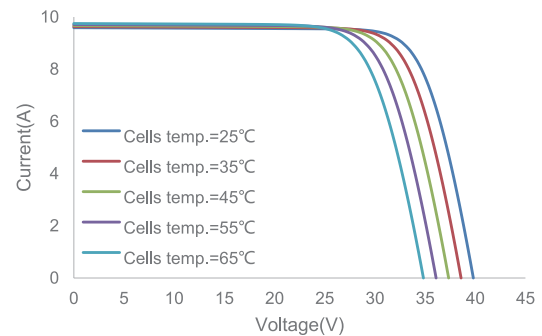
Per Pallet	31 Pcs
Per 20' GP Container	372 Pcs
Per 40' GP Container	868 Pcs
Per 40' HQ Container	938 Pcs

CURVE & TEMPERATURE DEPENDENCE

Current-Voltage & Power-Voltage curves (295W)



Current-Voltage curves(295W)



MAXIMUM RATINGS

Maximum system voltage (IEC/UL)	1000VDC or 1500VDC
Maximum series fuse rating	15A

ENGINEERING DRAWINGS

