

PERC



- Solar cell: High efficiency crystalline solar cell. Even if under the weak light, the solar monocrystalline module can produce maximum power output.
- Tempered glass: Anti-reflecting coating and high transmission rate glass increasing the power output and mechanical strength of solar module.
- EVE and TPT: Using high quality EVA and TPT to prevent destroying and water.
- All frames: Without screws corner connection. 8 holes on the frame can be installed easily.
- Junction box: Multi-functional and IP 68 rated water-proof junction box.
- Good performance of preventing from atrocious weather such as wind and hails.
- Resisting moisture and etching effectively, not effected by geology.
- Certificates issued by international authorities: ISO Quality Management system, CE, TUV ( IEC61215 and IEC61730 )
- Limited power degradation of Eagle module caused by PID effect is guaranteed under 60°C/85% RH condition for mass production.
- High salt and ammonia resistance certified by TUV NORD



### Mechanical Characteristics:

Cell Size (mm)	Mono-crystalline PERC 158.75X158.75
No. of cells	72(6X12)
Module Size (mm)	1979X1002X40
Module Weight (KG)	22.5

## NBJ-380M-BLACK

JINSHI SOLAR MODEL

### 72 CELLS

MONOCRYSTALLINE BLACK MODULE

### 360-380W

POWER OUTPUT RANGE

### 19.58%

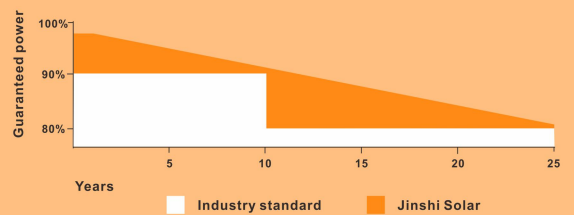
MAXIMUM EFFICIENCY

### 0~+3%

POWER OUTPUT GUARANTEE

### LINEAR PERFORMANCE WARRANTY

15 Year product warranty • 25 Year linear power warranty



### Packaging Specifications:

Number of modules per pallet	27
Number of pallets per 40' container	22
Packaging box dimensions (cm)	200x114x112
Box Weight (KG)	648

This publication summarizes product warranty and specification, which is subject to change without notice.

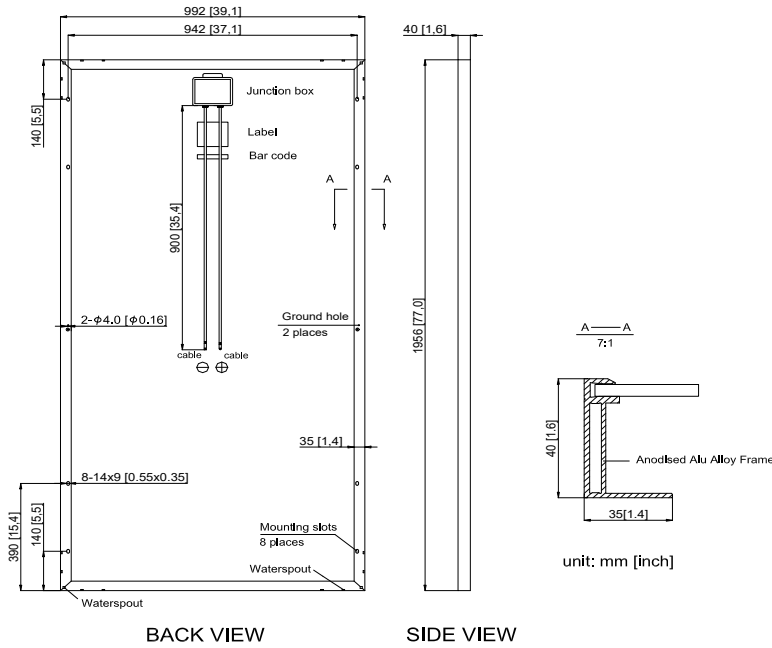


**Construction Materials:**

Front Glass	3.2mm, Low Iron, Tempered Glass
Frame	Anodized Aluminum Alloy Type 6063-T5
Junction Box	IP 68 Rated (Black)
Output Cables	TUV 1×4mm <sup>2</sup> , length:900mm

Connector	MC4 (IP68)
Encapsulation Material	EVA(0.45±0.03mm thickness)
Back Foil	White TPT(0.32±0.03mm thickness)
Fixing Adhesive	Silicone Sealant(White)

**Module Diagram:**



**Temperature Coefficient:**

Power Tolerance	0~+3%
Temperature Coefficient of Pmax	(-0.41±0.05)%/°C
Temperature Coefficient of Voc	(-0.34±0.02)%/°C
Temperature Coefficient of Isc	(0.05±0.01) %/°C
NOTC(°C)	(45±2) °C

**Operating Conditions:**

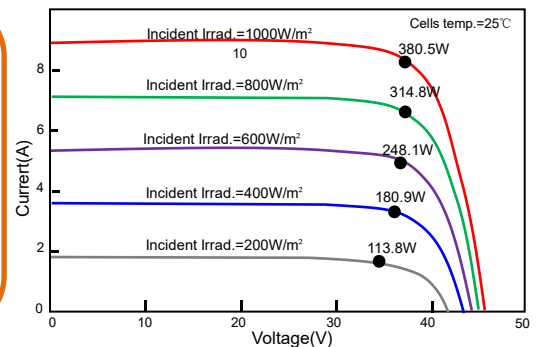
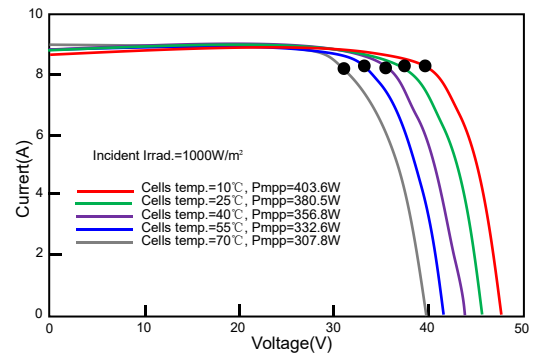
Max. system voltage	1500DVC (IEC)
Max. system fuse rating (A)	15
Operating temperature (°C)	-40~85
Max. static load, front (e.g., snow) pa	5400
Max. static load, back (e.g., wind) pa	2400

**Electrical Parameters at Standard Test Conditions (STC)**

Module type	NBJ-360M-72	NBJ-365M-72	NBJ-370M-72	NBJ-375M-72	NBJ-380M-72
Rated Maximum Power (Pmax/W)	360	365	370	375	380
Maximum Power Voltage (Vmp/V)	38.86	39.04	39.40	39.77	40.17
Open-circuit Voltage (Voc/V)	46.75	47.10	47.70	48.10	48.57
Maximum Power Current (Imp/A)	9.26	9.35	9.39	9.43	9.46
Short-circuit Current (Isc/A)	9.60	9.65	9.69	9.74	9.78
Module Efficiency (%)	18.15	18.41	18.67	19.00	19.16

STC: Irradiance 1000W/M2    Module Temperature: 25 °C    AM=1.5

**I-V Curve:**



This publication summarizes product warranty and specification, which is subject to change without notice.