

RELIGHT

Fastening system ReLight – Advantages:

- Flat roof system for east-west-facing mounting with 10° angle of inclination.
- In contrast to the conventional south-facing mount, the distance between the individual rows is reduced to a minimum. As a result, it is possible to utilize the roof surface much more efficiently.
- The individual mounts are connected one below the other by means of profile rails so that an integrated, homogenous module field is produced. This considerably reduces the amount of ballast required.
- The design of the ballast system was carried based on wind tunnel tests.
- The simple design allows an extremely fast and cost-effective installation. This is mainly assured by the lower rotary module clamp without a screw connection.
- An optimized relationship between the ventilation zones provides good rear ventilation and prevents temperature-related declines in performance.
- The delivery is carried out incompletely picked form, with all necessary small parts, including the ballast configuration.
- 10 years guarantee.

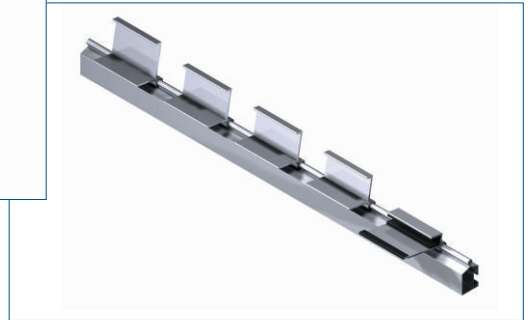
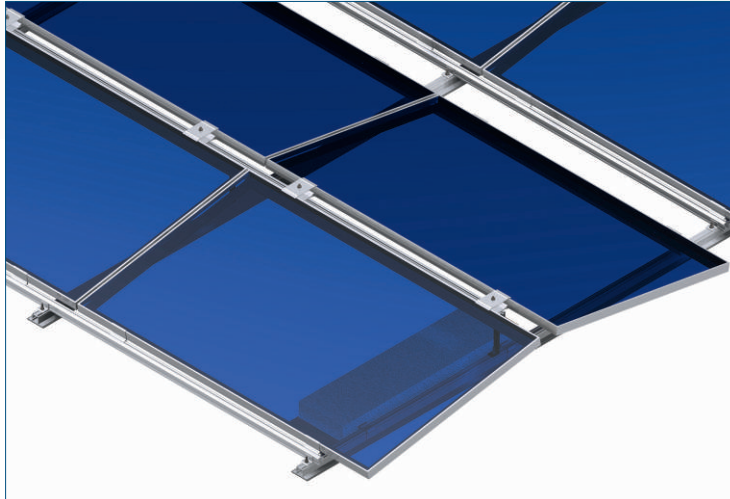
Picture 1: Complete constructions



Picture 2: Ground rail with connector



Picture 3: ReLight ballast



Description of the system:

The ReLight system was developed to optimize the yield in relation to the roof surface. The modules are inclined 10° toward the East and West. The selected gap dimensions provide an optimal ratio of the suction values, in addition to good rear ventilation.

The yield is quite similar to the south-facing mount. The assembly system is particularly well-suited for roofs with low load reserves. In its standard form, the system is designed for weighting with concrete blocks in commercially available sizes.

The ReLight System is suited for framed modules as well as laminates. The modules are inserted in the lower module clamps and are easily laid down into the small upper clamps using the swivel joint.

To avoid the accumulation of rainwater at the bottom rails, drainage connectors are installed as an option. To protect the roof cladding, the entire system is mounted on building protection fleece.

Delivery directly to the construction site:

A trouble-free storage management and transport organization guarantees smooth work flows, as well as rapid delivery times with simultaneous flexibility.

We supply the completely fabricated systems directly to the authorized dealer, plumber or private customer - worldwide.

Picture 1: Detail screen of construction

Picture 2: Varied opportunities of clamps

RELIGHT

Your authorized dealer: