

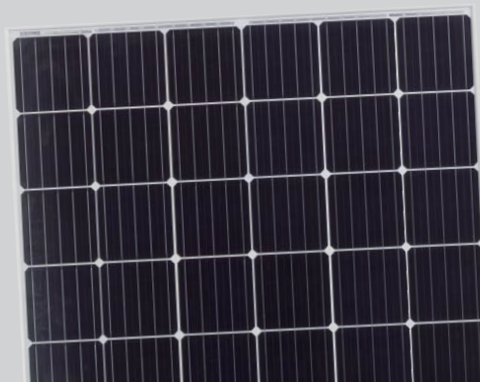
SL60-156MF 295-315W

MONOCRYSTALLINE MODULE

Positive power tolerance of 0~+3%

ISO9001:2015 certified factory
IEC61215, IEC61730 certified products

(5BB) PERC



KEY FEATURES



5 Busbar Solar Cell:

5 busbar solar cell adopts new technology to improve the efficiency of modules, offers a better aesthetic appearance, making it perfect for rooftop installation.



High Efficiency:

Higher module conversion efficiency (up to 19.24%) benefit from Passivated Emmitter Rear Contact (PERC) technology.



PID RESISTANT:

Mass-produced modules pass PID test (85°C/85% RH, 96H), limited power degradation by PID test is guaranteed for mass production.



Low-light Performance:

Advanced glass and solar cell surface texturing allow for excellent performance in low-light environments.



Severe Weather Resilience:

Certified to withstand: wind load (2400 Pascal) and snow load (5400 Pascal).



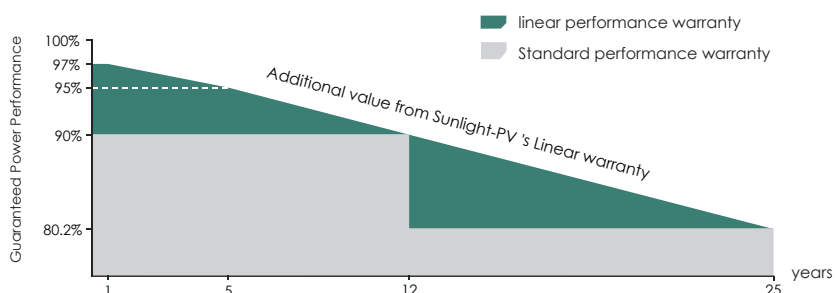
Durability against extreme environmental conditions:

High salt mist and ammonia resistance certified by TUV SUD.



LINEAR PERFORMANCE WARRANTY

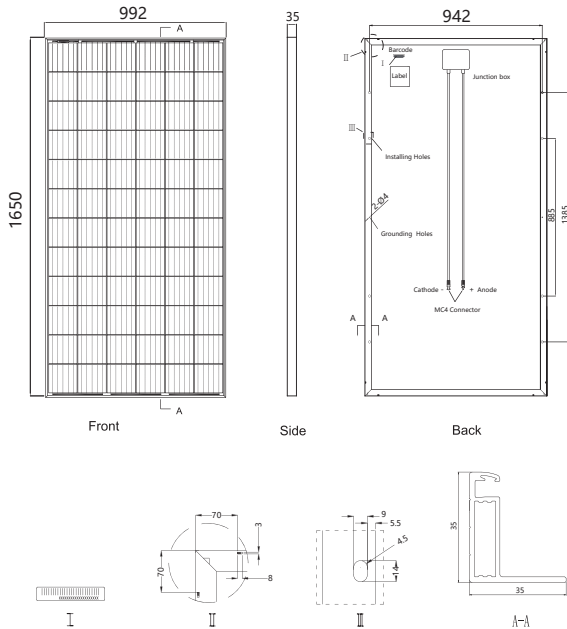
12 Year Product Warranty 25 Year Linear Power Warranty



Product Certification



Engineering Drawings



Packaging Configuration

Vehicle type	40HQ
Quantity of each support	30
Number of supports per vehicle	26
Number of modules per vehicle	780

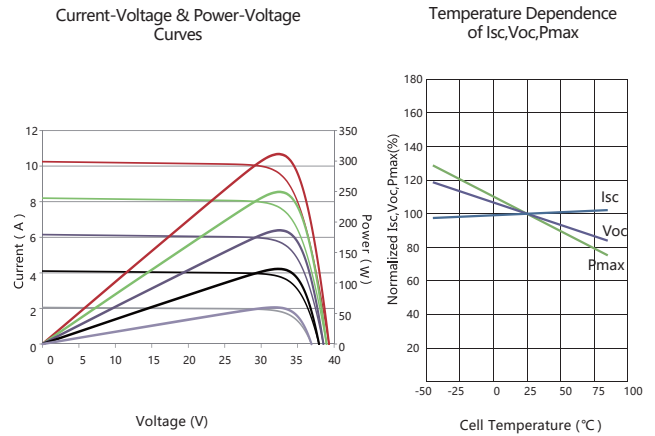
SPECIFICATIONS

Module Type	SL60-156MF-295W		SL60-156MF-300W		SL60-156MF-305W		SL60-156MF-310W		SL60-156MF-315W	
	STC	NOCT	STC	NOCT	STC	NOCT	STC	NOCT	STC	NOCT
Maximum Power (Pmax)	295Wp	220Wp	300Wp	224Wp	305Wp	227Wp	310Wp	231Wp	315Wp	235Wp
Maximum Power Voltage (Vmp)	32.4V	30.4V	32.6V	30.6V	32.8V	30.8V	33.0V	31.0V	33.2V	31.2V
Maximum Power Current (Imp)	9.10A	7.24A	9.21A	7.32A	9.30A	7.40A	9.40A	7.49A	9.49A	7.56A
Open-circuit Voltage (Voc)	39.7V	36.8V	40.1V	37.0V	40.3V	37.2V	40.5V	37.4V	40.7V	37.6V
Short-circuit Current (Isc)	9.61A	7.89A	9.72A	8.01A	9.83A	8.12A	9.92A	8.20A	10.04A	8.33A
Module Efficiency STC (%)	18.02%		18.33%		18.63%		18.94%		19.24%	
Operating Temperature (°C)	-40°C~+85°C									
Maximum system voltage	1000VDC									
Maximum series fuse rating	20A									
Power tolerance	0~+3%									
Temperature coefficients of Pmax	-0.39%/°C									
Temperature coefficients of Voc	-0.29%/°C									
Temperature coefficients of Isc	0.048%/°C									
Nominal operating cell temperature (NOCT)	45±2°C									

STC: Irradiance 1000W/m Cell Temperature 25°C AM=1.5

NOCT: Irradiance 800W/m Ambient Temperature 20°C AM=1.5 Wind Speed 1m/s

Electrical Performance & Temperature Dependence



Mechanical Characteristics

Cell Type	Mono-crystalline PERC	156.75×156.75mm
No. of cells	60 (6×10)	
Dimensions	1650×992×35mm (64.96×39.05×1.37 inch)	
Weight	19.0kg (41.88 lbs)	
Front Glass	3.2mm, High Transmission, Low Iron, Tempered Glass	
Frame	Anodized Aluminium Alloy	
Junction Box	IP67/IP68 Rated	
Output Cables	TÜV 4.0mm² Wire, MC4 Connector	