



BACK CONTACT

FU 350 / 355 / 360 M Zebra

Monocrystalline Photovoltaic Module - 120 half-cut IBC cells



GENERAL FEATURES

- **IBC - Interdigitated Back Contact cells**
- Innovative **Zebra technology developed in Europe**
- **Superior module efficiency up to 21.28%**
- **Total black look** without ribbons on the cells
- **Excellent temperature coefficient -0.3%/°C**
- **Immunity to LID** (Light Induced Degradation) and **LeTID** (Light and elevated Temperature Induced Degradation)
- **Improved low light performance**
- **Better yield with various tilts**
- **No shading on the cell** thanks to **IBC technology**
- **2 independent section** design secures a higher energy yield in case of shading and **minimize the need of optimizers**

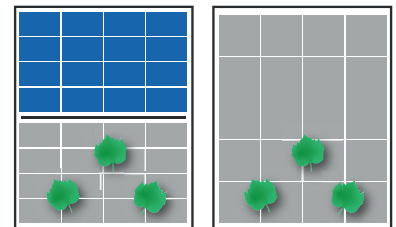
CERTIFICATIONS

- > **IEC 61215:2016 - IEC 61730:2016 & Factory Inspection**
- > **Fire Resistance - Class C**
- > **Salt Corrosion Resistance IEC 61701**

NEW

50 %

0 %



GUARANTEES

Product guarantee

25 YEARS

Performance guarantee

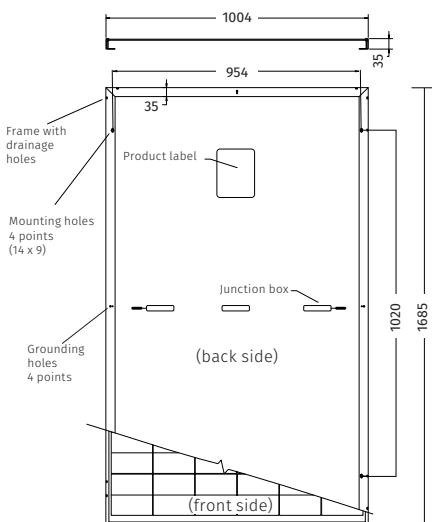
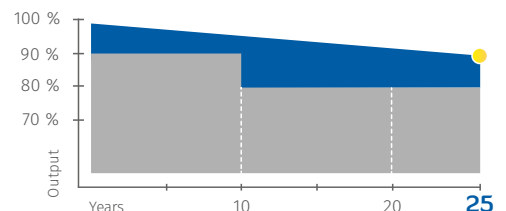
Max power decrease **0.4%/year**

1st year degradation - 1.0%

99% at the end of first year

89% at the end of 25th year

- Market standard performances
- FuturaSun performances



Note: dimensions in mm tolerance +/- 2 mm

ELECTRICAL DATA

MODULE ZEBRA		FU 350 M ZEBRA	FU 355 M ZEBRA	FU 360 M ZEBRA
<i>Standard Test Conditions STC: 1000 W/m² - AM 1.5 - 25 °C - tolerance: Pmax (±3%), Voc (±4%), Isc (±5%)</i>				
Module power (Pmax)	W	350	355	360
Open circuit voltage (Voc)	V	42.00	42.30	42.60
Short circuit current (Isc)	A	10.76	10.81	10.86
Maximum power voltage (Vmpp)	V	34.80	35.20	35.50
Maximum power current (Impp)	A	10.06	10.09	10.13
Module efficiency	%	20.69	20.98	21.28

<i>Nominal Module Operating Temperature NMOT: 800 W/m² - T=42 °C - AM 1.5</i>				
Module power (Pmax)	W	264	268	272
Open circuit voltage (Voc)	V	39.85	40.21	40.54
Short circuit current (Isc)	A	8.68	8.72	8.76
Maximum power voltage (Vmpp)	V	32.68	33.05	33.41
Maximum power current (Impp)	A	8.07	8.10	8.13

TEMPERATURE RATINGS

Temperature coefficient Isc	%/°C	0.046
Temperature coefficient Voc	%/°C	-0.246
Temperature coefficient Pmax	%/°C	-0.300
NMOT *	°C	42 ± 2
Operating temperature	°C	from -40 to +85

*Nominal Module Operating Temperature

MECHANICAL SPECIFICATIONS

Dimensions	1685 x 1004 x 35 mm
Weight	19.5 kg
Glass	High transmission, Low iron, Tempered, ARC, Transparent, 3.2 mm
Cell encapsulation	POE (Polyolefin)
Cells	120 monocrystalline half-cut IBC cells 158.75 x 79.375 mm
Backsheet	Composite multilayer film
Frame	Anodized aluminium frame with mounting and drainage holes
Junction box	Certified according to IEC 62790, IP 68 approved
Cables	Solar cable, length 300 mm or customized assembled with MC4-compatible plugs
Maximum reverse current (Ir)	20 A
Maximum system voltage	1500 V (1000 V on request)
Maximum load	Snow: 5400 Pa / Wind: 3600 Pa
Protection Class	II - accordance to IEC 61730

Authorized Dealer

2021_120m_350-360_Zebra-en



FuturaSun srl

Riva del Pasubio, 14 - 35013 Cittadella - Italy
Tel + 39 049 5979802 Fax + 39 049 0963081
www.futurasun.com - info@futurasun.it