

Global Techniques For Energy



The Solar Factory



SOLAR PANEL

DATA SHEET



A photograph of the Great Sphinx and an ancient Egyptian wall with hieroglyphs under a clear blue sky. The wall on the left is covered in intricate hieroglyphs and is illuminated by warm, golden light. The Great Sphinx is visible in the background, also bathed in the same warm light. The sky is a clear, vibrant blue.

WE ARE BUILDING
SINCE 7000 YEARS

GTE SOLAR

Poly






300-440w



• Poly cells

On the silicon wafers, GTE rely on the advanced technology and unique understanding of materials throughout the product design, to ensure the stable power output of the module, and effectively improve the efficiency and reliability of the modules.

• Key features

-  Less mismatch to get more power
-  Less power loss by minimizing the shading impact
-  Competitive low light performance
-  3 times EL test to ensure best quality
-  Ideal choice for utility and commercial scale projects by reduced BOS and improve ROI.
-  **PVEL** Outstanding reliability proven by PVEL for stringent environment condition :
 - sand, acid, and alkali, hail stones
 - 2400pa wind load and 5400pa snow load
 - Anti-PID

• Quality System

ISO19001 / ISO14001 / OHSAS18001

• Product Certification



• Insurance

PICC

• Warranty



10
YEARS

Guarantee on product material and workmanship

25
YEARS

linear power output warranty



Global Techniques for Energy

64 Nargess 3 , New Cairo 11385
Egypt
tel: +201002477600

Electrical Characteristics

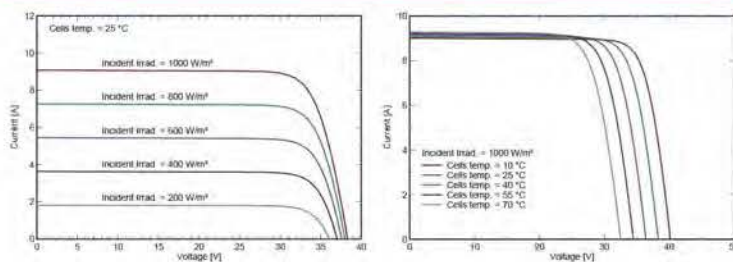
Maximum Power at STC	Pmax	335 W
Open Circuit Voltage	Voc	45.5 V
Optimum Operating Voltage	Vmp	36.987 V
Short Circuit Current	Isc	9.312 A
Optimum Operating Current	Imp	8.827 A
Power Tolerance	%	5
Fuse Current		20A
Efficiency	%	19.0

Operating Temperature -40~+85 °C

Nominal Operating Cell Temperature 45 ± 2 °C

STC: Irradiance 1000 W/m² module temperature 25°C AM=1.5
NOCT: Irradiance 800 W/m² ambient temperature 20°C wind speed :1m/s
Power measurement tolerance: +/-3%

I-V Curve



Mechanical Specifications

Length	mm	1969
Width	mm	996
Height	mm	40
Weight	kg	22.3
Temperature Limits	OC	-40 TO +85
Maximum System Voltage	V DC	1500
Junction Box		IP 68
Nominal Cell Temperature	NOCT	45 °C

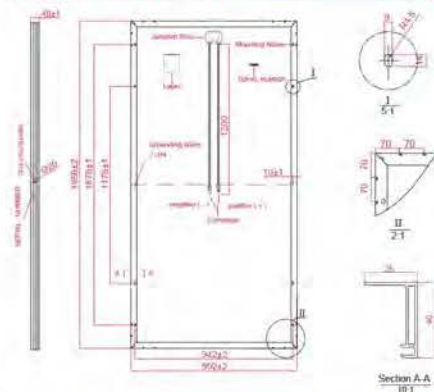
Packing Configuration

External Dimension

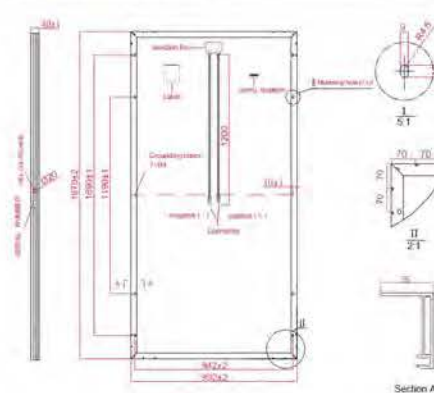
Container	20'GP	40'HQ
Pieces per Pallet	27	27*2*
Pallets per Container	10	22
Pieces per Container	270	638

* 27*2 pieces per pallet is the special package which only suits for container transport.

Technical drawing



Technical drawing



* All dimensions in mm

* The above drawing is a graphical representation of the product



Electrical Characteristics

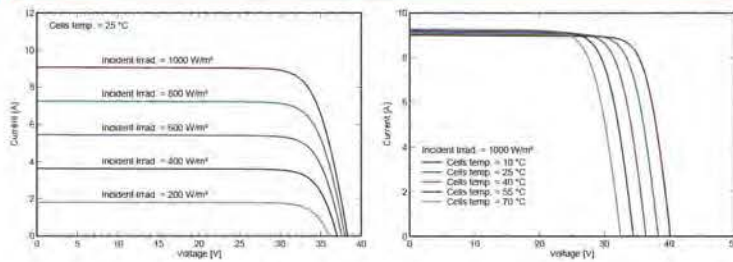
Maximum Power at STC	Pmax	445 W
Open Circuit Voltage	Voc	60.67 V
Optimum Operating Voltage	Vmp	49.312 V
Short Circuit Current	Isc	9.312 A
Optimum Operating Current	Imp	8.827 A
Power Tolerance	%	5
Fuse Current		20A
Efficiency	%	19.0

Operating Temperature -40~+85 °C

Nominal Operating Cell Temperature 45 ± 2 °C

STC: Irradiance 1000 W/m² module temperature 25°C AM=1.5
NOCT: Irradiance 800 W/m² ambient temperature 20°C wind speed :1m/s
Power measurement tolerance: +/-3%

I-V Curve



Mechanical Specifications

Length	mm	1969
Width	mm	1320
Height	mm	40
Weight	kg	22.3
Temperature Limits	OC	-40 TO +85
Maximum System Voltage	V DC	1500
Junction Box		IP 68
Nominal Cell Temperature	NOCT	45 °C

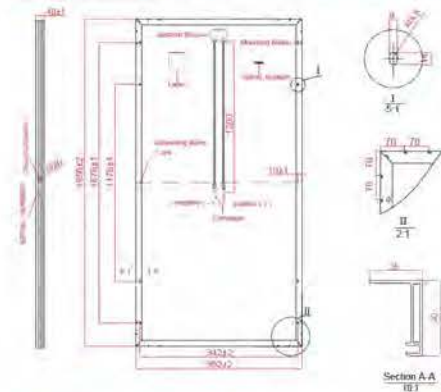
Packing Configuration

External Dimension

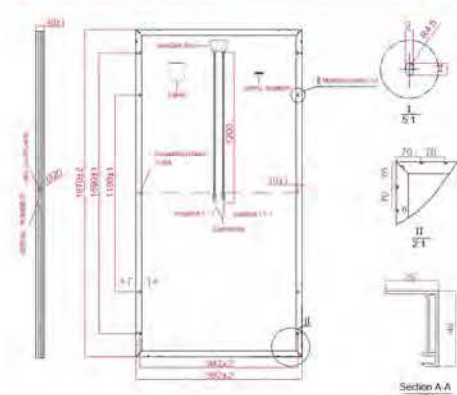
Container	20'GP	40'HQ
Pieces per Pallet	27	27*2*
Pallets per Container	10	22
Pieces per Container	270	638

* 27*2 pieces per pallet in the special package which only apply for container transport.

Technical drawing



Technical drawing



* All dimensions in mm

* The above drawing is a graphical representation of the profile.



Mono Perc







380-530 w



• Mono perk cells

On the silicon wafers, rely on the advanced technology and unique understanding of materials throughout the product design, to ensure the stable power output of the module, and effectively improve the efficiency and reliability of the modules.

• Key features

-  Less mismatch to get more power
-  Less power loss by minimizing the shading impact
-  Competitive low light performance
-  3 times EL test to ensure best quality
-  Ideal choice for utility and commercial scale projects by reduced BOS and improve ROI.
-  Outstanding reliability proven by PVEL for stringent environment condition :
 - sand, acid, and alkali, hail stones
 - 2400pa wind load and 5400pa snow load
 - Anti-PID

• Quality System

ISO19001 / ISO14001 / OHSAS18001

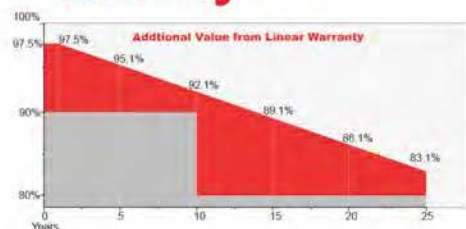
• Product Certification



• Insurance

PICC

• Warranty



10
YEARS

Guarantee on product material and workmanship

25
YEARS

linear power output warranty



Global Techniques for Energy

64 Nargess 3 , New Cairo 11385
Egypt
tel: +201002477600

Electrical Characteristics

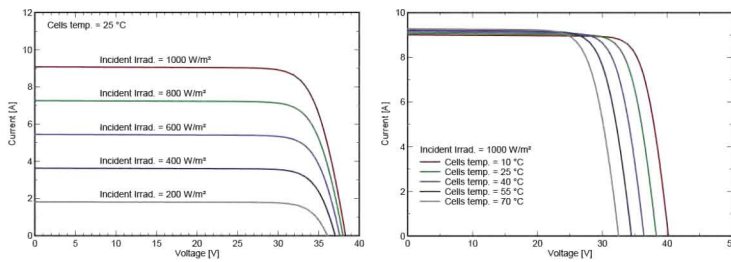
Maximum Power at STC	Pmax	400 W
Open Circuit Voltage	Voc	48.8 V
Optimum Operating Voltage	Vmp	41.47 V
Short Circuit Current	Isc	10.168 A
Optimum Operating Current	Imp	9.757 A
Power Tolerance	%	0-3
Fuse Current		20A
Efficiency	%	22.4

Operating Temperature -40~+85 °C

Nominal Operating Cell Temperature 45 ± 2 °C

STC: Irradiance 1000 W/m² module temperature 25°C AM=1.5
NOCT: Irradiance 800 W/m² ambient temperature 20°C wind speed :1m/s
Power measurement tolerance: +/-3%

I-V Curve



Mechanical Specifications

Length	mm	1969
Width	mm	996
Height	mm	40
Weight	kg	22.3
Temperature Limits	OC	-40 TO +85
Maximum System Voltage	V DC	1500
Junction Box		IP 68
Nominal Cell Temperature	NOCT	45 °C

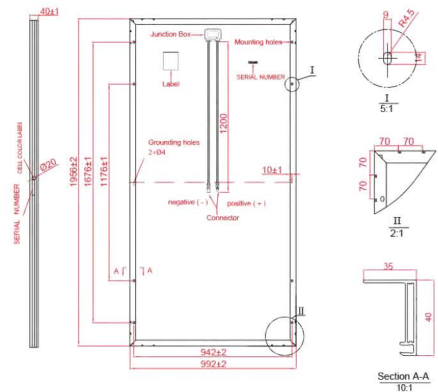
Packing Configuration

External Dimension

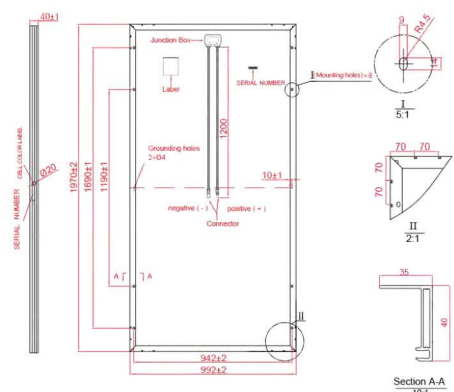
Container	20'GP	40'HQ
Pieces per Pallet	27	27+2*
Pallets per Container	10	22
Pieces per Container	270	638

* 27+2 pieces per pallet is the special package which only suits for container transport

Technical drawing



Technical drawing



* All Dimensions in mm.

* The above drawing is a graphical representation of the product.



Electrical Characteristics

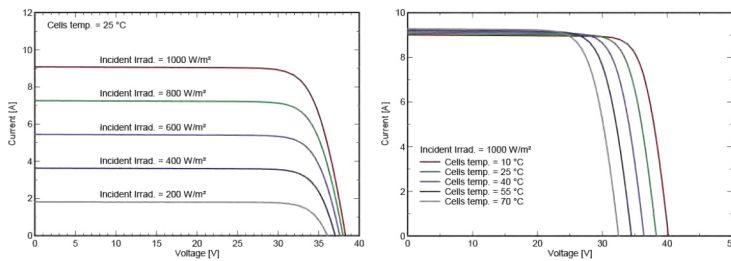
Maximum Power at STC	Pmax	530 W
Open Circuit Voltage	Voc	65.07V
Optimum Operating Voltage	Vmp	55.30V
Short Circuit Current	Isc	10.168 A
Optimum Operating Current	Imp	9.757 A
Power Tolerance	%	0-3
Fuse Current		20A
Efficiency	%	22.4

Operating Temperature -40~+85 °C

Nominal Operating Cell Temperature 45 ± 2 °C

STC: Irradiance 1000 W/m² module temperature 25°C AM=1.5
NOCT: Irradiance 800 W/m² ambient temperature 20°C wind speed :1m/s
Power measurement tolerance: +/-3%

I-V Curve



Mechanical Specifications

Length	mm	1969
Width	mm	1320
Height	mm	40
Weight	kg	22.3
Temperature Limits	OC	-40 TO +85
Maximum System Voltage	V DC	1500
Junction Box		IP 68
Nominal Cell Temperature	NOCT	45 °C

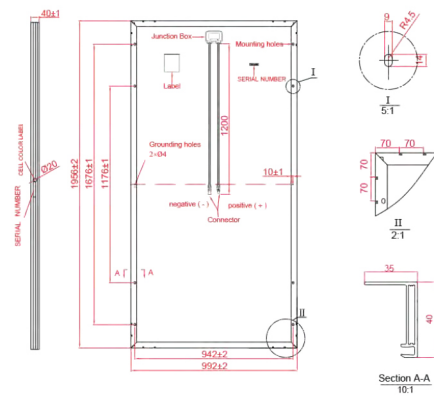
Packing Configuration

External Dimension

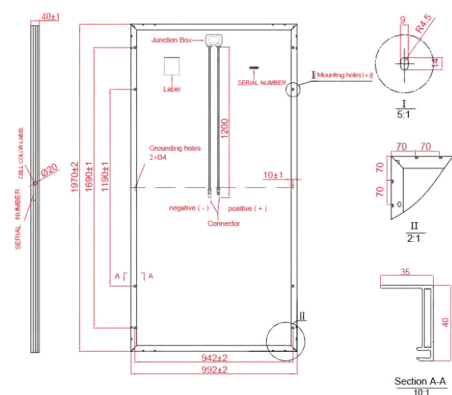
Container	20'GP	40'HQ
Pieces per Pallet	27	27+2*
Pallets per Container	10	22
Pieces per Container	270	638

* 27+2 pieces per pallet is the special package which only suits for container transport

Technical drawing



Technical drawing



* All Dimensions in mm.

* The above drawing is a graphical representation of the product.



