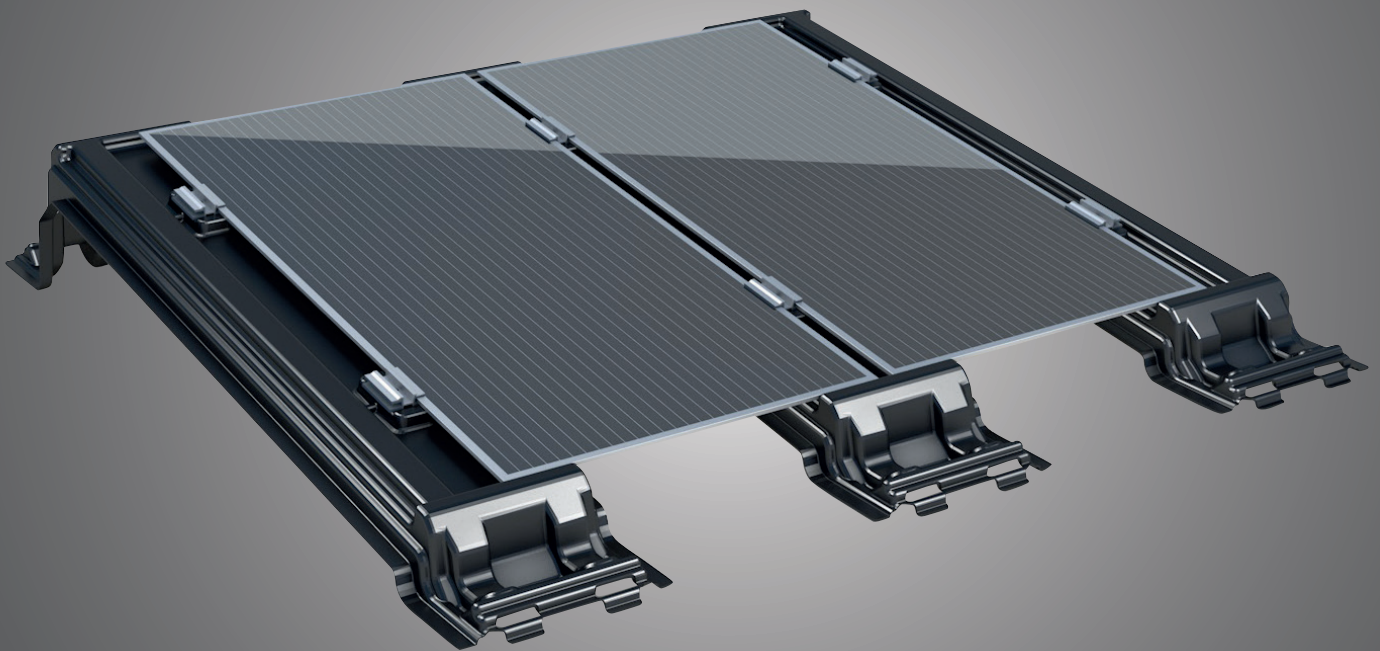


SOLARDIREKT

the easy way



VARIOTWIN[®] 4.1



DATA SHEET

The quickest flat roof assembly system in the world for glass/glass modules.

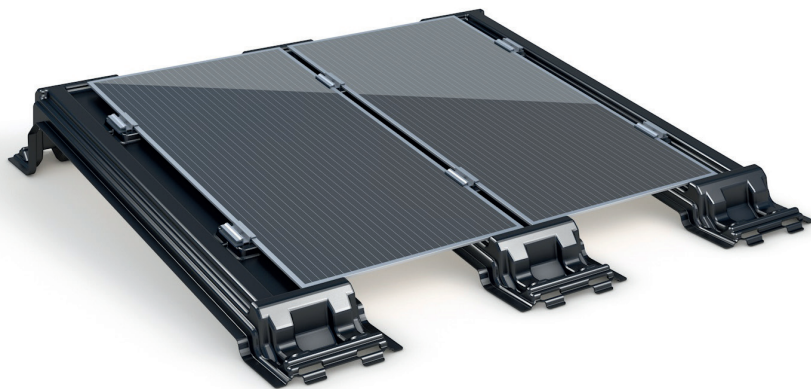
No additional components are needed due to the integrated module clamps.



- » **easy** to plan
- » **easy** to transport
- » **easy** to store
- » **easy** to install
- » **easy** to combine
- » **easy** economical
- » **easy** long-lasting



WEIGHT AND DIMENSIONS



Length: 1572 mm

Height: 247 mm

Width: 310 mm

Weight: 1.6 kg

Angle: 7 °

Other angles on request.

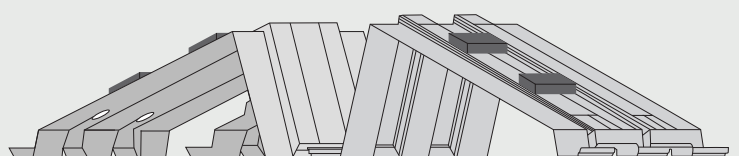
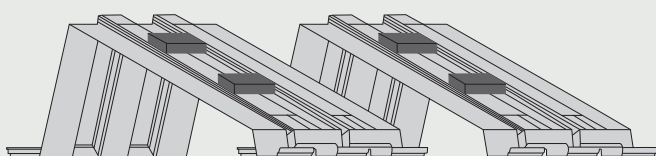
» HDPE

» UV-resistant

» black

SOUTH ELEVATION

EAST-WEST ELEVATION

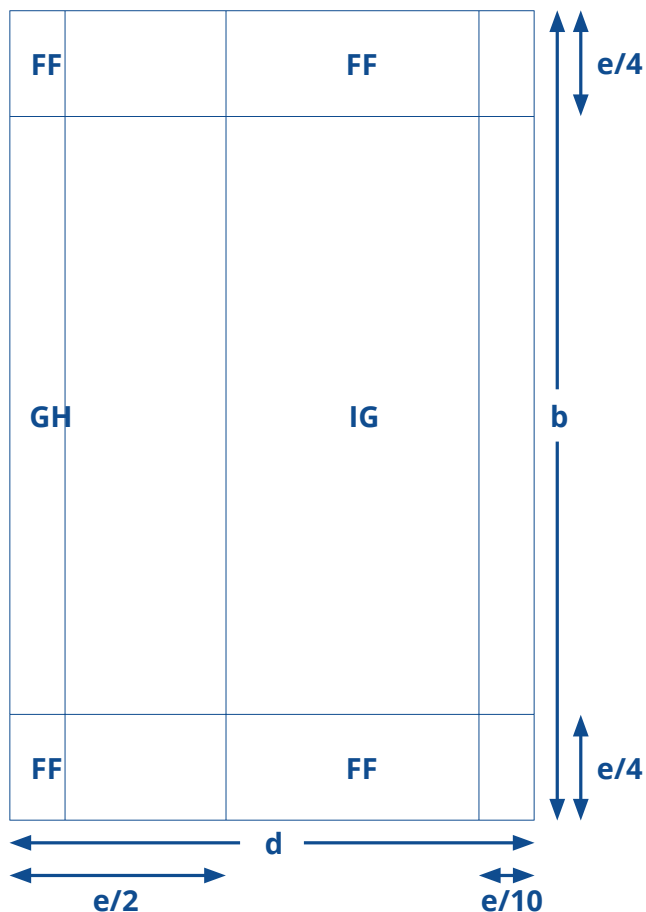


REQUIREMENTS FOR THE AMOUNTS OF BALLAST FOR THE VARIOTWIN 4.1

In accordance with DIN 1055, wind loads are rated for structures up to 300m in height. Wind loads are recorded in the form of wind pressure and wind strength. The acting strengths and pressures are rated by wind speed, wind zone, velocity pressure, category of terrain and building height. Our VARIOTWIN 4.1 flat roof mounting system is suitable for flat roof and monopitch roof construction up to a roof pitch of 5 degrees. In order to determine the proof of structural stability for the VARIOTWIN 4.1 module holder, the aerodynamic influences and the necessary static calculations were carried out by consulting engineers in the field of statics in accordance with the requirements of DIN 1055-4 and 1055-5. The static calculations give us the necessary data to quantify the necessary ballast values of the VARIOTWIN 4.1 mounting system. The following are suitable as ballast: Among

other things, paving slabs. The stated ballast values relate to Germany. In the case of unclear local conditions, SOLARDIREKT ENERGY GmbH & Co. KG recommends that the building statics should be checked. No liability will be assumed for questions about statics. The stated values refer exclusively to branded material from SOLARDIREKT ENERGY GmbH & Co. KG in this context. VARIOTWIN 4.1 was designed exclusively for use as a mounting system for the attachment of photovoltaic modules. SOLARDIREKT ENERGY GmbH & Co. KG accepts no liability for any other type of use other than the one described. Almost all commercially available solar modules can be installed on the VARIOTWIN 4.1. The installation of the photovoltaic modules onto the VARIOTWIN 4.1 flat roof mounting system is approved exclusively for transverse installation, and should be undertaken by professionals.

DISTRIBUTION OF VARIOTWIN 4.1 FRINGES



The required values for determining the ballast calculation for the roof areas. H and I as well as F and G must be calculated in accordance with the actual location.

e = building height

Example: Building height 10m e = 10m

$e/4 = 10 : 4 = 2.5\text{m}$

$e/10 = 10 : 10 = 1\text{m}$

SOLARDIREKT

the easy way



SOLARDIREKT
the easy way



SOLARDIREKT ENERGY GmbH & Co. KG

Landersumer Weg 40

D-48431 Rheine

Phone: +49 5971 804 05-0

Fax: +49 5971 804 05-29

info@solardirekt.com

www.solardirekt.com