

## Ground Mounting System- Concrete & Screw Foundation



### KS1 & KS2 Series

Product Name: All-aluminum ground mounting system

Material: AL 6005 - T5 high strength aluminum alloy

Foundation: Ground screw or concrete pile

Warranty: 10 years warranty, 25 years service life

Standard: JISC8955-2017 Design Guide on structures for photovoltaic array

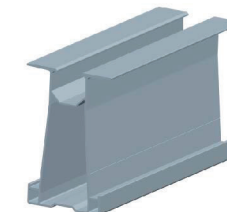
### Merit:

1. Lightweight, easy transportation and installation, safe construction.
2. High corrosion resistance, salt tolerance.
3. The maximum pre-assembly, save construction time and labor cost.
4. Environmental protection, suitable for variety of geological conditions. It is durable and recyclable.
5. Many solutions to meet different customers' requirements.

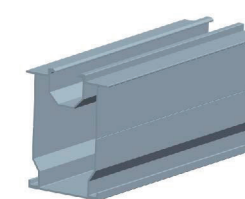
## Components



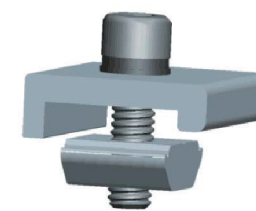
Pre-assembly Beam



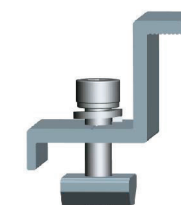
Rail for Vertical Panel



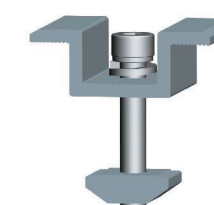
Rail for Horizontal Panel



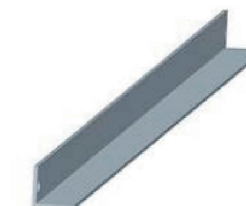
Rail Clamp



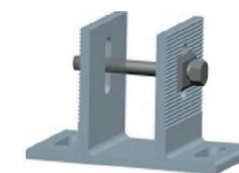
End Clamp



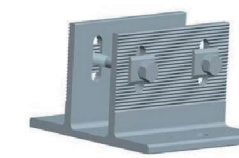
Mid Clamp



Reinforcing Beam



Base 1



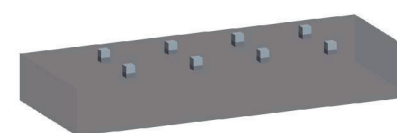
Base 2



Ground Screw

## Installation Steps

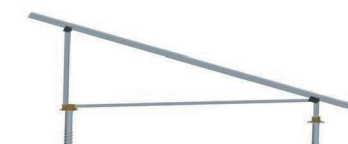
### 1. Install Foundation



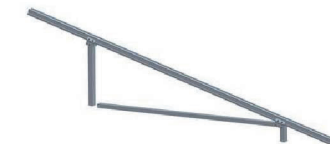
### 2. Install Base



### 3. Install the Pre-assembly



### 4. Install Reinforcing Beam



### 5. Install Rail



### 6. Install Modules

