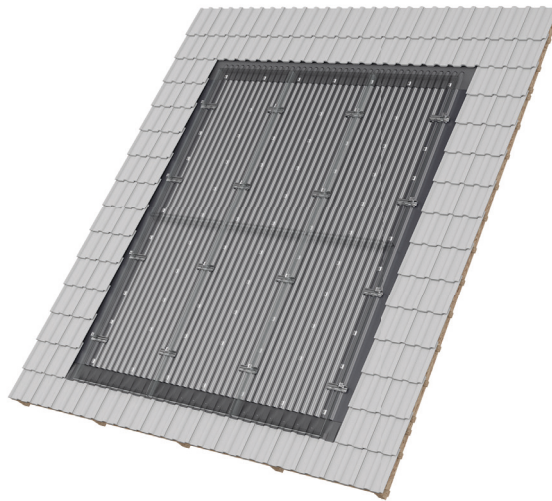




mounting  
systems



## Infix ProLine

<b>Application</b>	Pitched roof – roof-integration
<b>Roof cladding</b>	Suitable for most types of roof cladding
<b>Roof slope</b>	10° to 45° (other slopes on request)
<b>Total height of PV system</b>	Portrait: 40 mm + module height Landscape: 30 mm + module height
<b>Roof structure</b>	Battens as for conventional tile covering
<b>Certificate</b>	MPA Dresden: Fire behaviour tests in accordance with DIN EN 13501-5:2010-02
<b>Supporting profiles</b>	Extruded Aluminium (EN AW 6063 T66)
<b>Small parts</b>	Stainless steel (V2A)
<b>Flashing (lateral and top)</b>	Aluminium (EN AW 3005)
<b>Corrugated metal</b>	Aluminium (EN AW 3005)
<b>Seals</b>	EPDM
<b>Colour</b>	Profiles/sheeting: plate finish, black on demand
<b>Warranty</b>	10 years



In-roof



Framed module



Orientation portrait



Orientation landscape



Double Roman Tiles



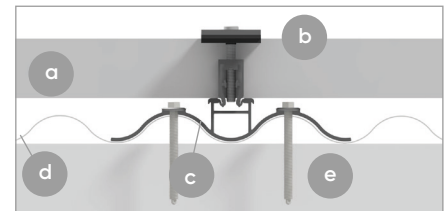
Slate



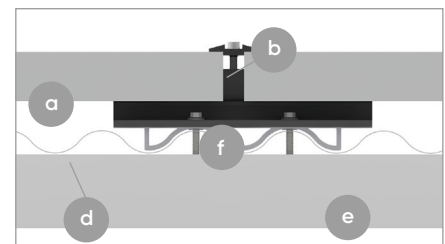
Plain Tiles



Bitumen shingles



Horizontal section, landscape installation



Horizontal section, portrait installation

- a PV module
- b Module clamp
- c Adapter for landscape installation
- d Corrugated sheet
- e Roof batten
- f Adapter for portrait installation

