

CST305~345P6-24

Standard 72 Cells
Polycrystalline PV Module

Poly 5BB High Efficiency CELL

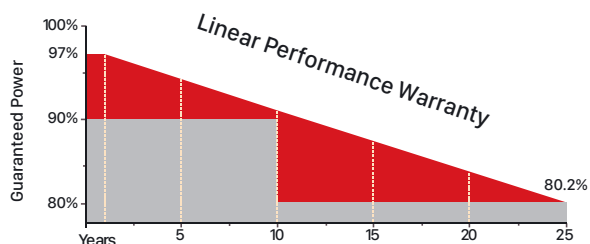


IEC61215 : 2016
IEC61730 : 2016

345W
Maximum Power Output

17.78%
Maximum Efficiency

0~+5W
Positive Power Tolerance



High module conversion efficiency

Achieved high Module efficiency through advanced cell technology and manufacturing capabilities



Excellent weak light performance

More power output in weak light condition such as haze cloudy and morning



Certified to withstand

Wind load (2400 Pascal) and snow load (5400 Pascal)



Withstanding harsh environment

Reliable quality leads to a better sustainability even in harsh environment like desert, farm and coastline



High PID resistant

Advanced cell technology and qualified materials lead to high resistance to PID

97.0% in the first year, thereafter, for years two (2) through twenty-five (25), 0.7% maximum decrease from MODULE's nominal power output per year, ending with the 80.2% in the 25th year after the defined WARRANTY STARTING DATE.

- 12-year product warranty
- 25-year linear performance warranty

Electrical Characteristics

PV module model	CST305P6-24	CST310P6-24	CST315P6-24	CST320P6-24	CST325P6-24	CST330P6-24	CST335P6-24	CST340P6-24	CST345P6-24
Maximum Power - Pmax(W)	305	310	315	320	325	330	335	340	345
Open Circuit Voltage - Voc(V)	44.9	45.2	45.4	45.6	46.1	46.3	46.5	46.6	46.8
Short Circuit Current - Isc(A)	8.90	9.02	9.15	9.22	9.34	9.45	9.55	9.64	9.68
Voltage at Pmax-Vmp(V)	37.0	37.1	37.2	37.5	37.6	37.7	37.9	38.1	38.5
Current at Pmax-Imp(A)	8.24	8.36	8.47	8.53	8.64	8.75	8.84	8.92	8.96
Module Efficiency-ηm(%)	15.72	15.98	16.23	16.49	16.75	17.01	17.26	17.52	17.78

Power Tolerance	(0,+5)
Maximum System Voltage(V)	1000/1500
Maximum Series Fuse Rating(A)	15
<small>STC: Irradiance 1000 W/m², module temperature 25 °C, AM=1.5; Best in Class AAA solar simulator (IEC 60904-9) used, power measurement uncertainty is within +/- 3%</small>	

Mechanical Specifications

External Dimensions	1956*992*40mm
Weight	22kg
Solar Cells	poly crystalline (72pcs)
Front Glass	3.2 mm tempered glass low iron
Frame	Anodized aluminum alloy
Junction Box	IP68
Output Cables	4.0mm ² , cable lenght:1100mm
Connector	(Compatible with)MC4
Mechanical Load/front	a:5400pa b:3600pa
Mechanical Load/back	a:2400pa b:1600pa

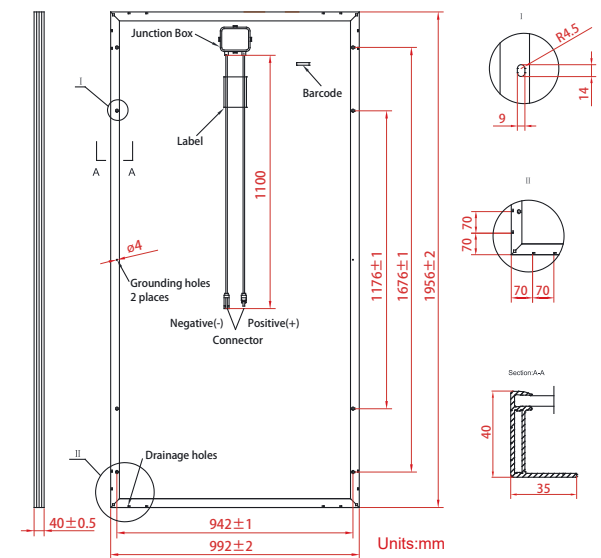
Packing Configuration

Container	20'GP	40'GP
Pieces per pallet	26	26
Pallets per container	10	24
Pieces per container	260	624

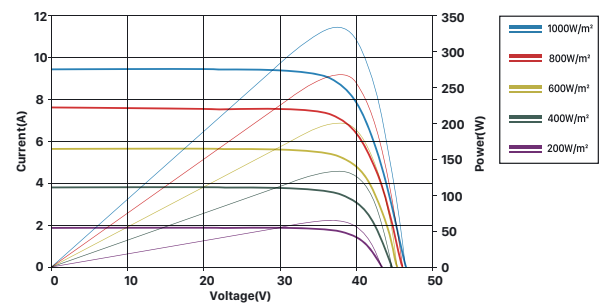
Temperature Characteristics

Pmax Temperature Coefficient	-0.40%/°C
Voc Temperature Coefficient	-0.32%/°C
Isc Temperature Coefficient	+0.05%/°C
Operating Temperature	-40~+85°C
Nominal Operating Cell Temperature (NOCT)	45±2°C

Engineering Drawings



Current-Voltage&Power-Voltage Curve(335W)



Temperature Dependence of Isc,Voc,Pmax

