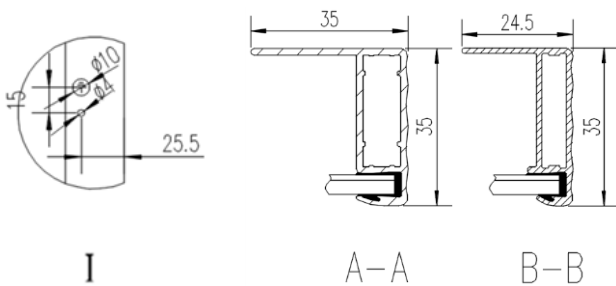
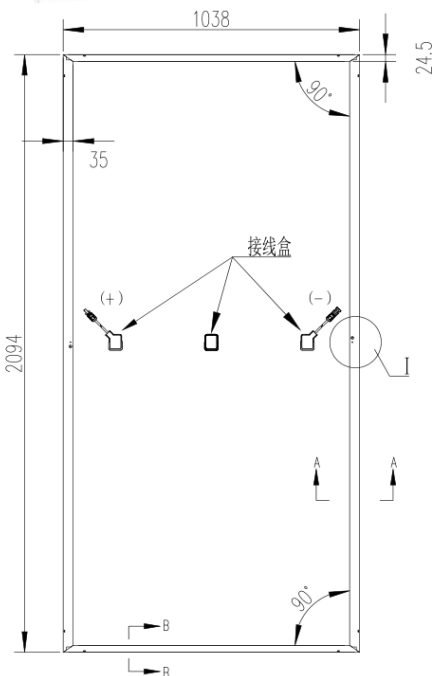
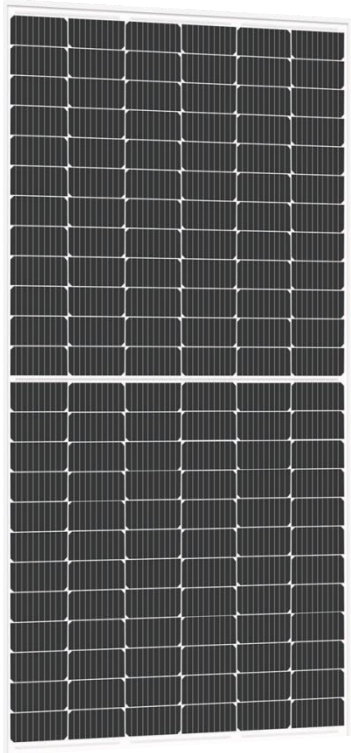


## SOLAR MODULE

LNMH144-XXX(435W-460W)

Mono / 9 Busbar / 144 half cells



Unit:mm

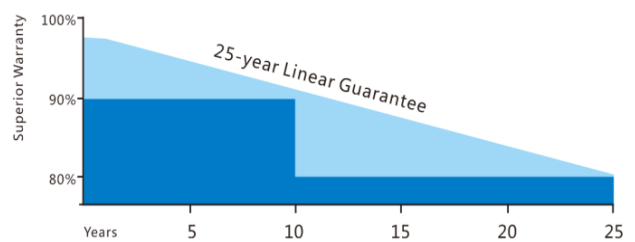
### Key Features

- Increased MBB (Multi Busbar) reflectance ensure higher power
- Power output: Positive tolerance of up to 5W
- 100%EL 2 times-inspection ensures modules are defect free
- Anti-reflective and self-cleaning surface reduces
- Pass ammonia and salt mist test
- Unique circuit design to reduce shading loss
- Reduced hot spot risk

### Comprehensive Certificates

- IEC61215, IEC61730
- TUV, CE
- ISO9001:2015
- ISO14001:2015
- OHSAS 18001:2007

### Superior Warranty



#### 25-year Linear Power Output Warranty

Power output\* shall not exceed:

For Mono-crystalline Modules: 2.5 % in the first year, thereafter 0.60% per year, ending with 83.1% in the 25th year after the Warranty Start Date;

For Poly-crystalline Modules: 2.5 % in the first year, thereafter 0.70% per year, ending with 80.7% in the 25th year after the Warranty Start Date.

\*measured at STC



## SOLAR MODULE

LNMH144-XXX(435W-460W)

Mono / 9 Busbar / 144 half cells

### Electrical Parameters@STC

Pmax (W) 0-+5W	Umpp (V)	Impp(A)	Uoc (V) ±3%	Isc(A) ±3%	Module Efficiency	Max System Voltage	Max Series Fuse
435	40.84	10.66	48.98	11.30	20.01%	1500V/1000V	20A
440	41.02	10.73	49.19	11.38	20.24%	1500V/1000V	20A
445	41.23	10.80	49.36	11.47	20.47%	1500V/1000V	20A
450	41.39	10.88	49.49	11.56	20.70%	1500V/1000V	20A
455	41.55	10.97	49.62	11.65	20.93%	1500V/1000V	20A
460	41.69	11.05	49.75	11.76	21.16%	1500V/1000V	20A

### Temperature Parameter

Temperature Cycling Range:	-40°C ~ +85°C
Norminal Module Operating Temperature:	42±2 °C
Temperature Coefficient of Isc:	0.059%/°C
Temperature Coefficient of Voc :	-0.288 %/°C
Temperature Coefficient of Pmax :	-0.381%/°C

### Mechanical Data

Module Dimension:	2094×1038×35mm
Weight:	23.5kg
Snow/Wind Load:	5400/2400 Pa
Number of Cells:	144pcs
Thickness of Glass:	3.2mm
Junction Box:	IP68, 3 Diodes
Length:	(+)290mm /(-)290mm(including connector)
Connector:	HTC-16, IP68

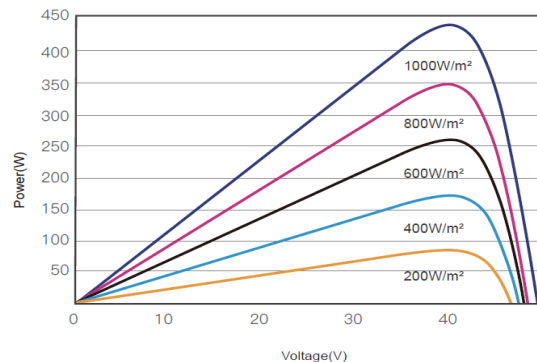
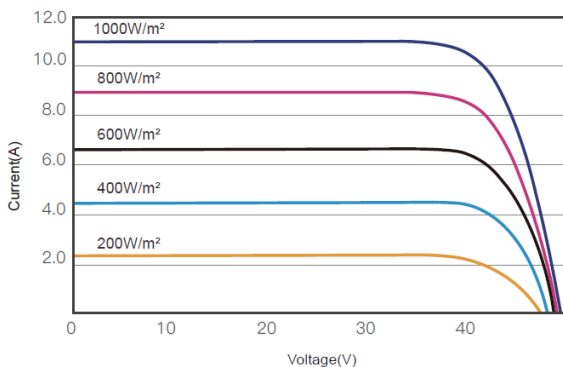
### Guarantee

12-year warranty on materials & workmanship  
 25-year linear power output warranty

### Packaging Configuration

Modules Per Pallet: 31pcs  
 Modules Per 40' HQ: 682pcs

### 450W Mono Module I-V Curve



STC: Irradiance 1000W/m<sup>2</sup>    Temperature 25°C    AM=1.5  
 NMOT: Irradiance 800W/m<sup>2</sup>    Temperature 20°C    Wind Speed 1m/s

Specifications subject to technical changes and tests, Linuo Power reserves the right of final interpretation.

**To create value to customers**