



山西路安太阳能科技有限责任公司

SHANXI LU' AN PHOTOVOLTAIC TECHNOLOGY CO., LTD

地址: 山西省长治市漳泽新型工业园区

邮编: 046011 电话: +86 355 5916666

销售热线: +86 355 5916888

info@luansolar.com http:// www.luansolar.com



山西路安太阳能科技有限责任公司

SHANXI LU' AN PHOTOVOLTAIC TECHNOLOGY CO., LTD

Zhangze New Industrial Park, Changzhi City, Shanxi Province

Pos Code: 046011 Telephone: +86 355 5916666

Sales Tel: +86 355 5916888

info@luansolar.com http:// www.luansolar.com

## LA72-6-290P ( 290-320 )

太阳能组件

### 电气特性

| 型号          | Voc(V) | Isc(A) | Vmp(V) | Imp(A) | Pmax(W) |
|-------------|--------|--------|--------|--------|---------|
| LA72-6-290P | 45.0   | 8.59   | 36.2   | 8.02   | 290     |
| LA72-6-295P | 45.1   | 8.72   | 36.3   | 8.13   | 295     |
| LA72-6-300P | 45.2   | 8.84   | 36.4   | 8.25   | 300     |
| LA72-6-305P | 45.3   | 8.97   | 36.5   | 8.36   | 305     |
| LA72-6-310P | 45.4   | 9.10   | 36.6   | 8.47   | 310     |
| LA72-6-315P | 45.5   | 9.23   | 36.7   | 8.59   | 315     |
| LA72-6-320P | 45.6   | 9.35   | 36.8   | 8.70   | 320     |

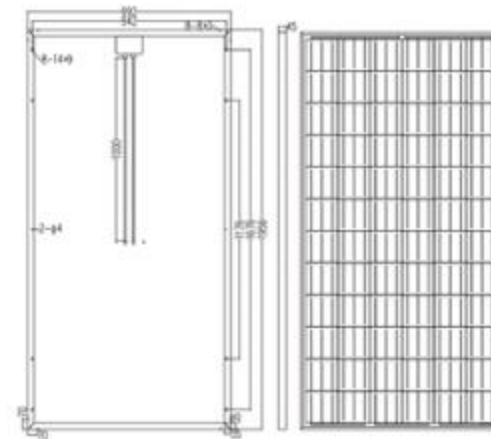
\* STC: 光照强度1000W/m<sup>2</sup>, 组件温度25℃, AM: 1.5

### 结构参数

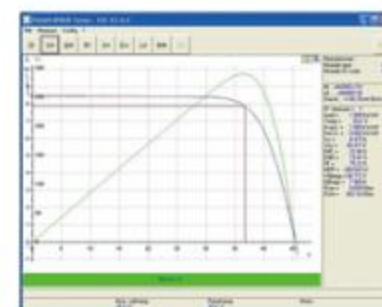
|       |                     |
|-------|---------------------|
| 电池片种类 | P-Si                |
| 组件尺寸  | 1956 × 992 × 50(mm) |
| 电池片数量 | 72 ( 6*12 )         |
| 工作温度  | -40℃ ~ +85℃         |
| 电池片规格 | 156*156(mm)         |
| 组件重量  | 24kg                |
| 线缆长度  | 1200mm              |
| 前盖玻璃  | 镀膜玻璃                |

### 品质参数

|          |          |
|----------|----------|
| 最大系统电压   | 1000 V   |
| 开路电压温度系数 | -0.32%/℃ |
| 短路电流温度系数 | +0.04%/℃ |
| 最大功率温度系数 | -0.42%/℃ |
| 电池额定工作温度 | 45 ± 2℃  |
| 保险丝额定值   | 15A      |



### I-V曲线特性



## LA72-6-290P ( 290W-320W )

太阳能组件

### Electrical Characteristics

| Module      | Voc(V) | Isc(A) | Vmp(V) | Imp(A) | Pmax(W) |
|-------------|--------|--------|--------|--------|---------|
| LA72-6-290P | 45.0   | 8.59   | 36.2   | 8.02   | 290     |
| LA72-6-295P | 45.1   | 8.72   | 36.3   | 8.13   | 295     |
| LA72-6-300P | 45.2   | 8.84   | 36.4   | 8.25   | 300     |
| LA72-6-305P | 45.3   | 8.97   | 36.5   | 8.36   | 305     |
| LA72-6-310P | 45.4   | 9.10   | 36.6   | 8.47   | 310     |
| LA72-6-315P | 45.5   | 9.23   | 36.7   | 8.59   | 315     |
| LA72-6-320P | 45.6   | 9.35   | 36.8   | 8.70   | 320     |

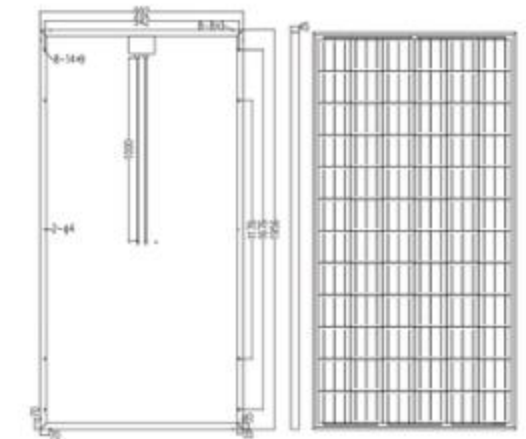
NOTES: All technical data at Standard Test Conditions(STC): Irradiance level 1000W/m<sup>2</sup> spectrum AM1.5 and cell temperature 25℃.

### Dimension and parameter

|                           |                     |
|---------------------------|---------------------|
| Type cells                | P-Si                |
| Dimensions                | 1956 × 992 × 50(mm) |
| Number of cells           | 72 ( 6*12 )         |
| Temperature cycling range | -40℃ ~ +85℃         |
| Solar cells               | 156*156(mm)         |
| Weight                    | 24kg                |
| Length of cables          | 1200mm              |
| Glass of front cover      | 镀膜玻璃                |

### Qualification

|   |          |
|---|----------|
| Maximum System Voltage                    | 1000 V   |
| Temperature coefficients of voltage       | -0.32%/℃ |
| Temperature coefficients of current       | +0.04%/℃ |
| Temperature coefficients of power         | -0.42%/℃ |
| Nominal Operating Cell Temperature (NOCT) | 45 ± 2℃  |
| Maximum series fuse rating                | 15A      |



### I-V Curve

