

Shenzhen Xiangxinrui Solar Energy Co. ,Ltd

Add: 4F Building , Xinfra 1st Rd, Xinfra Industry Park, Shajing, Shenzhen

6*9 PCS '161.7*161.7mm' SUNPOWER SOLAR CELL

Sunpower ETFE Flexible Solar Panel

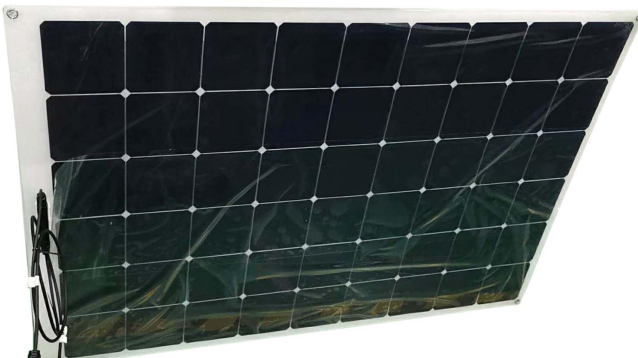
Positive power tolerance 0~+3W



Solar



Key Features



10 year
30 year

Long Warranty:

10 years for product
25 years for power output



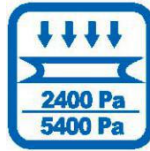
High Efficiency:

High module conversion efficiency(up to 25.3%)
through innovative manufacturing technology.



Low-light Performance:

Advanced glass and solar cell surface texturing allow
for excellent performance in low-light environments.



Severe Weather Resilience:

Wind load up to 3800Pa/ snow load up to 5400Pa



Durability against extreme environmental conditions:

High salt mist and ammonia corrosion resistance tests passed

SPECIFICATIONS

Item No.	XXR-SFSP-ETFE-300W	XXR-SFSP-ETFE-310W	XXR-SFSP-ETFE-320W	XXR-SFSP-ETFE-330W	XXR-SFSP-ETFE-335W	XXR-SFSP-ETFE-340W	XXR-SFSP-ETFE-345W
	STC						
Solar Panel Size(mm)	1500*1000*3mm						
Solar Cell Size(mm)	sunpower 161.7*161.7mm						
Max Power(Pmax)	300W	310w	320w	330w	335w	340w	345w
Max Power Voltage(Vmp)	30V	30V	30V	30V	30V	30V	30V
Max Power Current(Imp)	10A	10.33	10.66	11	11.16	11.33	11.5
Open Circuit Voltage(Voc)	35.4V	35.4V	35.4V	35.4V	35.4V	35.4V	35.4V
Short Circuit Current (Isc)	11A	11.36	11.73	12.1	12.28	12.46	12.65
Module Efficient STC (%)	21.6	22.5	23.1	23.8	24.2	24.8	25.0
Operating Temperature(°C)	-40°C ~+85°C						
Max system voltage	1000VDC (IEC)						
Max series fuse rating	15A						
Power tolerance	0~+3W						
Temperature coefficient of Pmax	-0.42%/°C						
Temperature coefficient of Voc	-0.32%/°C						
Temperature coefficient of Isc	0.05%/°C						
Nominal operating cell temperature(NOCT)	45 ± 2°C						

STC: Irradiance 1000W/m²; Cell Temperature: 25°C; AM=1.5

Mechanical Characteristics

Cell Type	Sunpower 161.7*161.7mm (6*6 inch)
Number of cells	54 (9*6) pcs
Dimesion	1500*1000*3mm
Weight	4.95KG
Junction Box	Waterproof IP67 Rated
Output Cables	TUV 1*4.0mm ² , Length: 900mm

