

Mono & Poly-Crystalline Solar Module



Model: IS-260/24 | IS-335/24

5BB MULTI-CRYSTALLINE

TECHNOLOGY & QUALITY

Inter Solar one of the most experienced and largest manufacturer of Solar Energy equipments and solar photovoltaic modules.



More Power/m² Compared to Industry Average



Triple EL Checking to Ensure Defect Free Modules

TOP QUALITY PRODUCT

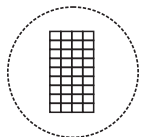
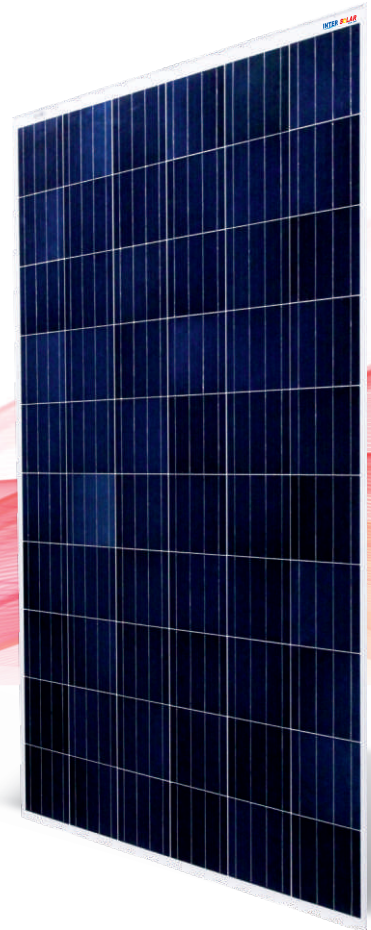
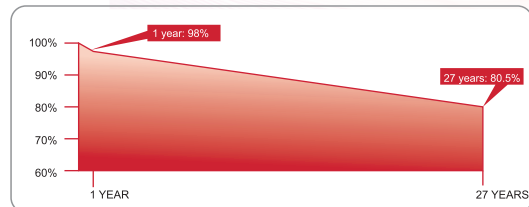
INTER SOLAR
15 YEARS
QUALITY
WARRANTEE

INTER SOLAR
12 YEARS
>90%
OUTPUT WARRANTEE

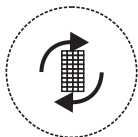
INTER SOLAR
25 YEARS
>80%
OUTPUT WARRANTY

INTER SOLAR
25 YEARS
WORKING LIFE
WARRANTEE

PERFORMANCE WARRANTY



Superior module efficiency as per international benchmarks



Glass with anti reflective coating improves light transmission



PID resistant with long term reliability



Sustain heavy wind & snow loads

Reduces installation costs by
Reduces transport costs by
Reduces land costs by

2%

IS-260/24 | IS-335/24

PRODUCT FEATURES

- High transmittance low iron tempered glass
- RFID* enabled module for identification and traceability purpose.
- 100 % EL-Tested before lamination to ensure invisible defects like cracks, free module.
- UV resistance weather to junction box with inbuilt bypass diode
- Specially designed to meet our customers satisfaction

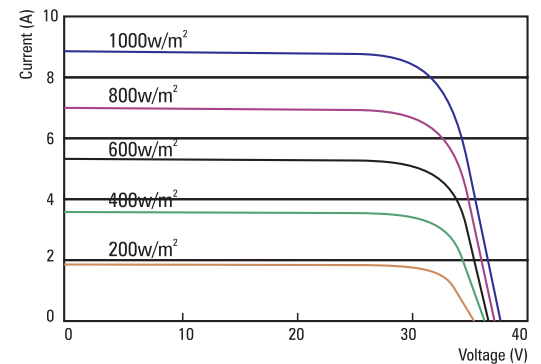
APPLICATIONS

- On grid roof top residential
- Street lightening solution
- Solar pumping solution
- Defence requirements
- Off-grid residential systems

Mechanical Characteristics

Type of Module	IS-260/24	IS-320/24 / IS-335/24
Type of Cell	Poly-Crystalline	Poly-Crystalline
Module Matrix	10x6 (60 pcs)	12x6 (72 pcs)
Dimensions in mm	1645 x 990mm	1961x990mm
Frame	Anodized Aluminium Alloy	Anodized Aluminium Alloy
Relative Humidity	0 TO 100%	0 TO 100%
Cell Encapsulant Type	EVA (Ethylene vinyl acetate)	EVA (Ethylene vinyl acetate)
Mechanical Load test	5400 pa	5400 pa
Glass Type	High transmittance low iron tempered glass	High transmittance low iron tempered glass
Backsheet	Composite film	Composite film

Electrical performance

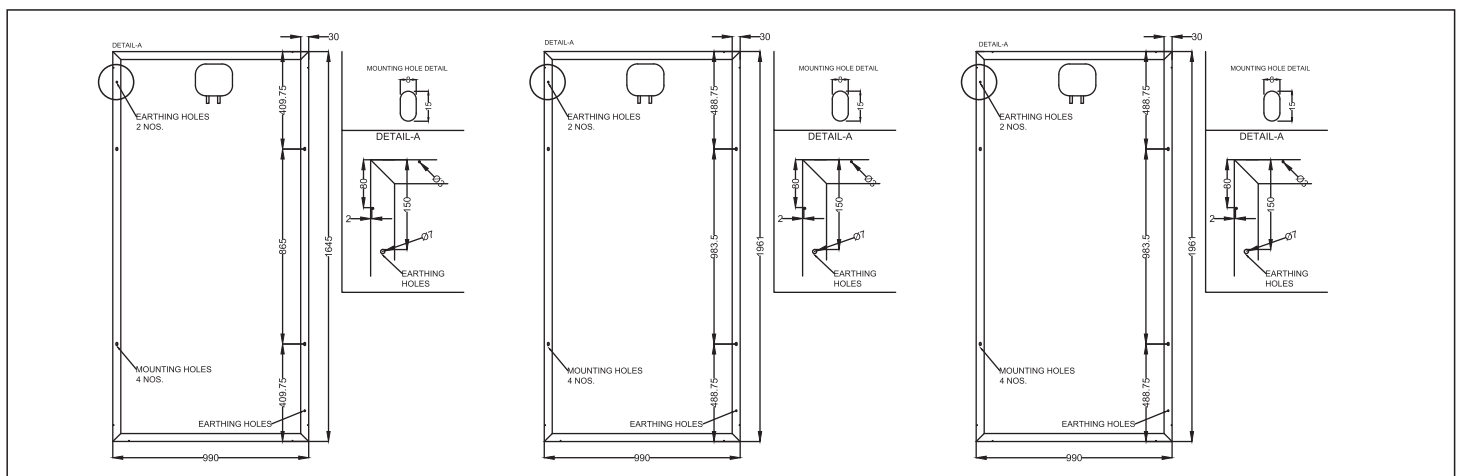


Electrical Characteristics

Model No.	IS-260/24	IS-320/24	IS-335/24
Maximum power (Pmax)	260W	320W	335W
Operating Volt (V)	24V	24V	24V
Open Circuit Voltage (Voc)	35.1V	45.10V	45.20V
Short Circuit Current (Isc)	8.80A	8.90A	9.20A
Voltage at Maximum Power (Vpm)	30V	37.22V	38.50V
Current at maximum Power (Ipm)	8.65A	8.69A	8.71A
Module Eff.	16%	17.20%	17.39%
Electrical Tolerance (%)	(+3)	(+3)	(+3)
ELECTRICAL DATA AT NOCT Temperature	45+-2°C	45+-2°C	45+-2°C
MAXIMUM RATING			
Maximum System Voltage	1000 V	1000 V	1000 V



ELECTRICAL DATA AT STC (Standard Test Conditions (STC):
Air Mass AM 1.5, Irradiances 1000W/m2, Cell Temperature 25°C)



For complete information. Please contact : **INTER SOLAR SYSTEMS PVT. LTD.**