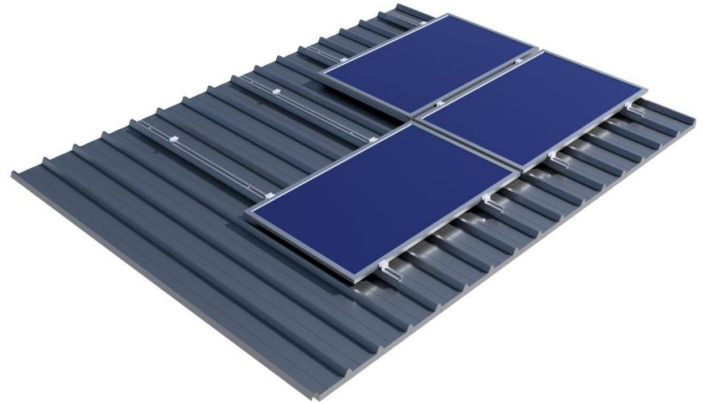


AS415L - H2400 HELIOS Industrial Roof

Alumil, recognizing its installers' need for quick and safe structures, improved the PV mounting system on industrial roofs considerably, by offering an innovative solution bearing numerous advantages.

- Quick and easy assembly.
- Adaption to various types of industrial roofs.
- Possibility to position the PV modules in portrait or landscape inclinations for maximum cover of your shed.
- New H2216 profile which is light and strong and therefore reduces the weight on the carrying structure of the industrial roof.
- Due to the dimensions of the profile, panels are better ventilated; as a result, the installation performs better in high temperatures.
- The installation time is reduced up to 50%.



Materials

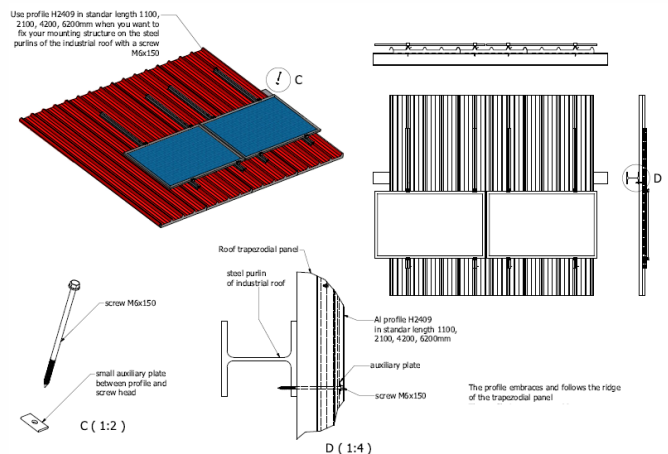
- Aluminum Alloy 6005T6
- Inox Screws

General characteristics

- Series: H2400
- Type: AS415L
- Application: Industrial Roof
- Alignment: Landscape
- Inclination: Tangent to the industrial roof
- Foundation: Self drilling rivets or self drilling screws
- Special characteristics: Light mounting structure

Certification

- Static Analysis According Eurocodes 1,3,9
- ISO 9001 / ISO 14001
- Technical Manual
- Alumil 20 Year Guarantee



PRODUCT ACCESSORIES

Aluminum Accessories Codes

EX-8960180200	MID CLAMP
EX-8960660000	CAP OF PANEL CLAMP WITH 55mm LENGTH
EX-8960XX0100	END CLAMP XX mm, L=55mm - depends on panel thickness
EX-7201999200	BUTYL TAPE ALUM. 100*0,6mm
EX-8962409040	SEAL FOR PROFILE H2409

Profile for Industrial Roof Codes

EX-8962409600	PROFIL H2409 OF LENGTH 6200mm
EX-8962409400	PROFIL H2409 OF LENGTH 4200mm
EX-8962409700	PROFIL H2409 OF LENGTH 3150mm
EX-8962409200	PROFIL H2409 OF LENGTH 2100mm

Bolts & Nuts Codes

EX-8968008103	T-SLOT NUT M8 ALUMINIUM
EX-762908XX01	HEX SOCKET SCREW ISO4762 M8x XX A2 INOX - depends on panel thickness
EX-7627300801	SERRATED LOCK WASHER DIN6798-A M8 A2 INOX
EX-7626615000	DIN 7504-K SELF DRILLING SCREW 6,3x150 + EPDM
EX-7626703201	DIN 7504-K SELF DRILLING SCREW 6,3x32 A2 INOX