

# GS PITCHED ROOF RACKING SYSTEM

## Benefits

❖ **Pre-assembled for easy installation**

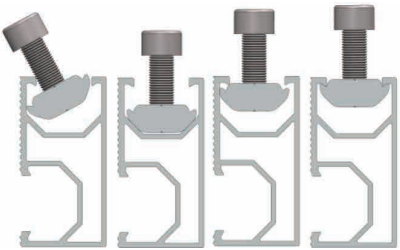
D-module can be put into GD Rail from any position. This makes installation earlier and can save you time on site.

❖ **Various Solution for the different conditions**

GD Rail and its accessories can be installed with the most solar panels on the commercial and residential Roof.

❖ **Safety and Reliability**

The racking systems designed by skilled engineers can stand up to the extreme weather complying with the AS/NZS 1170 and other international structure load standards. The main support components have also been tested to guarantee its structure and load-carrying capacity.



## Technical Information

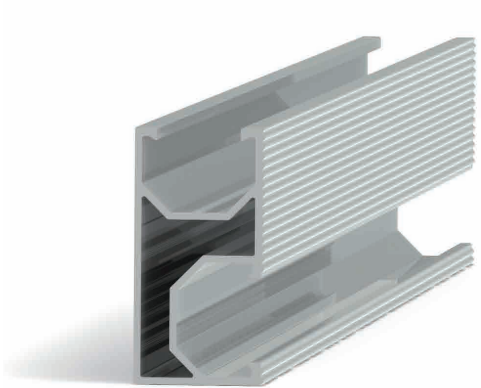
Installation Site	Commercial and Residential Roof		
Tilt Angle	Flushed with the roof, up to 60deg	Material	Aluminum & Stainless steel
Building Height	up to 20m	Color	Natural & Black
Max Wind Speed	up to 60m/s	Anti-corrosive	Anodized
Snow Load	1.4KN/m2	Warranty	10 years warranty
Standards	AS/NZS 1170& DIN 1055	Duration	More than 20 years



## MAIN PARTS

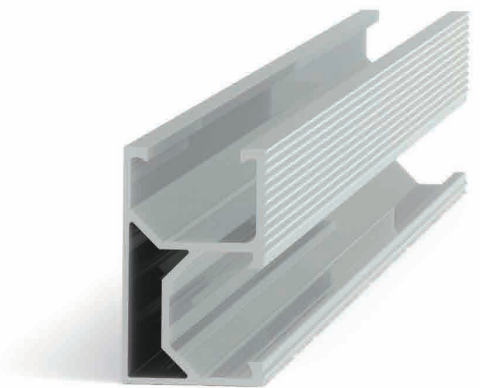
### Rails And Splice

D-module can be put into GD Rail from any position via simple installation.



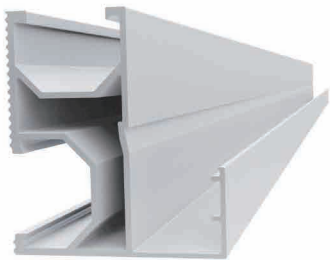
**GS-DR-Length(Classical)**

·Description : GS Rail 1#  
·Spec : 55x28mm



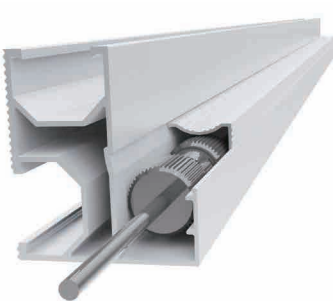
**GS-10R-Length(Economy)**

·Description : GS 10# Rail  
·Spec : 46x28mm



**GS-DR5-Length**

·Description : GS 5# Rail  
·Spec : 55x49mm



**Mount with the cable**



**GS-CRC-Length**

·Description : Rail Cap I  
·Spec : 24x10mm

### Rail Connection



**GS-DR-SP**

·Description : Rail Splice  
·Spec : 150mm



**Rail Connection**



**GS-DR-SP-GW**

·Description : Rail Splice with  
grounding washer/ washer  
·Spec : 150mm