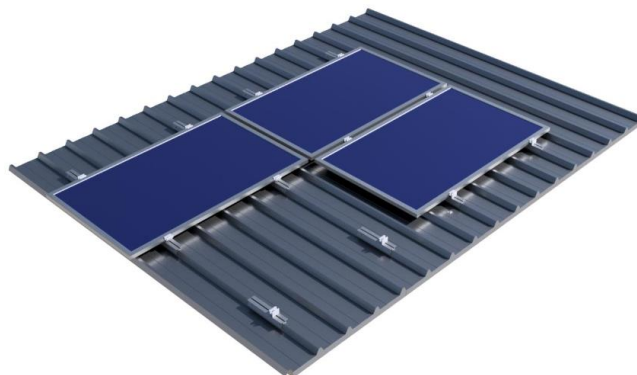


AS410L - H2400 HELIOS Industrial Roof

Alumil, recognizing its installers' need for quick and safe structures, improved the PV mounting system on industrial roofs considerably, by offering an innovative solution bearing numerous advantages.

- Quick and easy assembly.
- Adaption to various types of industrial roofs.
- Possibility to position the PV modules in portrait or landscape inclinations for maximum cover of your shed.
- New H2216 profile which is light and strong and therefore reduces the weight on the carrying structure of the industrial roof.
- Due to the dimensions of the profile, panels are better ventilated; as a result, the installation performs better in high temperatures.
- The installation time is reduced up to 50%.



Materials

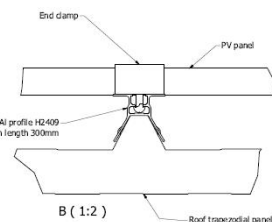
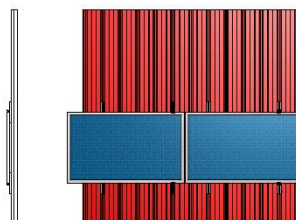
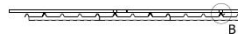
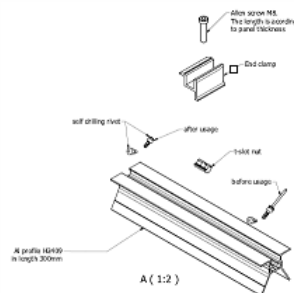
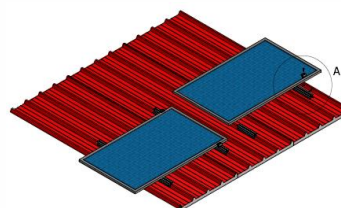
- Aluminum Alloy 6005T6
- Inox Screws

General characteristics

- Series: H2400
- Type: AS405L
- Application: Industrial Roof
- Alignment: Landscape
- Inclination: Tangent to the industrial roof
- Foundation: Self drilling rivets or self drilling screws
- Special characteristics: Light mounting structure

Certification

- Static Analysis According Eurocodes 1,3,9
- ISO 9001 / ISO 14001
- Technical Manual
- Alumil 20 Year Guarantee



PRODUCT ACCESSORIES

Aluminum Accessories

EX-8962409300	PROFILE H2409 OF LENGTH 300
EX-8960180200	MID CLAMP
EX-8960660000	CAP OF PANEL CLAMP WITH 55mm LENGTH
EX-8960XX0100	END CLAMP XX mm, L=55mm - depends on panel thickness
EX-7201999200	BUTYL TAPE ALUM. 100*0,6mm

Bolts & Nuts

EX-8968008103	T-SLOT NUT M8 ALUMINIUM
EX-762908XX01	HEX SOCKET SCREW ISO4762 M8x XX A2 INOX - depends on panel thickness
EX-8966332001	SELF DRILLING SCREW 6,3x32
EX-7627300801	SERRATED LOCK WASHER DIN6798-A M8 A2 INOX
EX-8966216001	EPDM WASHER 6,2X16 INOX A2
EX-8969481000	TOOL FOR RIVETS
EX-8960481000	SELF DRILLING RIVETS ZEBRA TYPE 4,8X10