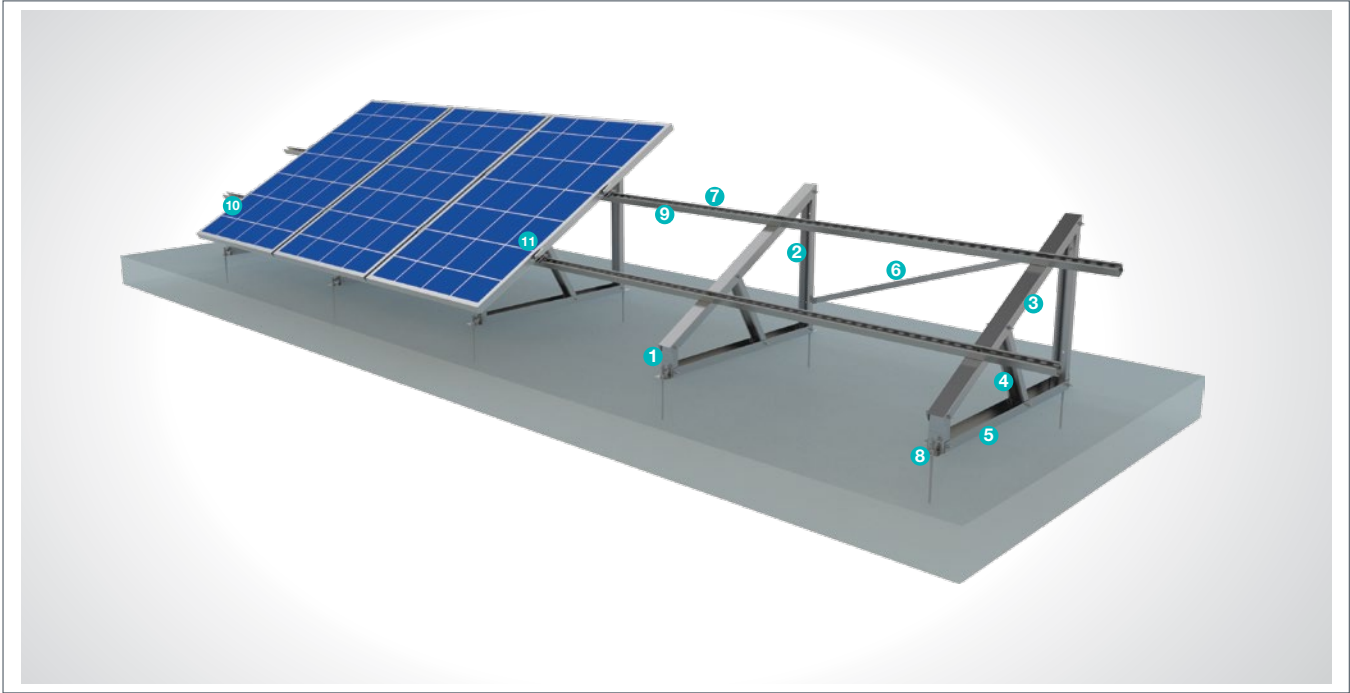


(KPT21) Flat Roof Steel Mounting System with 1 Vertical Panel

Overview

KPT21, is a flat roof steel mounting system with 1 vertical panel. The system is an optimal application solution for installations of PV projects on large and small-sized roofs. After manufacturing the system components with high-technology machines and equipment, an excellent corrosion resistance is then achieved through hot-dip galvanized coating. The system, incorporating a high-level engineering design, provides assembly and cost advantages.



STEEL COLUMN



- **CK-70**
M8X30 Knurled Bolt
M8 Flanged Nut
M8 Washer

STEEL COLUMN



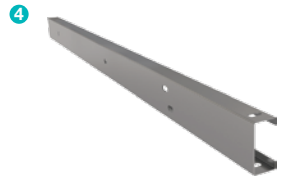
- **CK-70**
M8X30 Knurled Bolt
M8 Flanged Nut
M8 Washer

STEEL BEAM



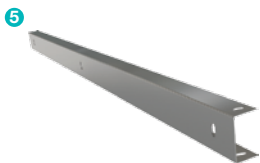
- **CU-75**
M8X30 Knurled Bolt
M8 Flanged Nut
M8 Washer

STEEL DIAGONAL



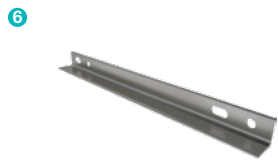
- **C-70**
M8X30 Knurled Bolt
M8 Flanged Nut
M8 Washer

STEEL COLUMN CONNECTOR



- **CU70**
M12X30 Knurled Bolt
M12 Flanged Nut
M12 Washer

STEEL L BRACKET



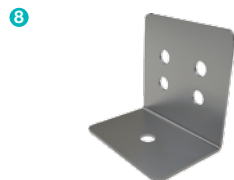
- **CL-40X40**
M12X30 Knurled Bolt
M12 Flanged Nut
M12 Washer

STEEL PROFILE



- **CP41x41**
M12X30 Knurled Bolt
M12 Flanged Nut
M12 Washer

STEEL ANCHOR CONNECTOR



- **L50x70**
M8X30 Hex Bolt
M8 Flanged Nut
M8 Washer
Chemical Anchor

PURLIN CONNECTOR JOINING PIECE



- **C41**
M12X30 Knurled Bolt
M12 Flanged Nut
M12 Washer

PANEL SIDE RETAINER



- **H30-H32-H40**
M8X30 Hex Bolt
M8 Rectangular Nut

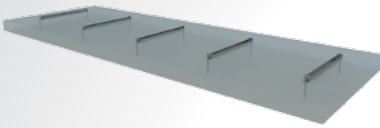
PANEL CENTER RETAINER



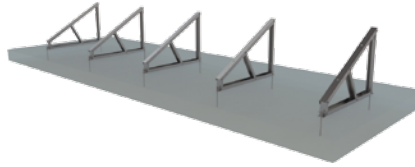
- **L70**
M8X30 Hex Bolt
M8 Rectangular Nut

Installation Phase

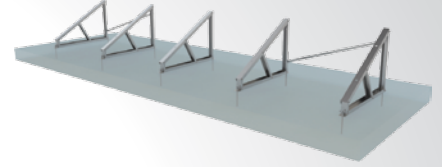
A Anchorage Mounted To Concrete



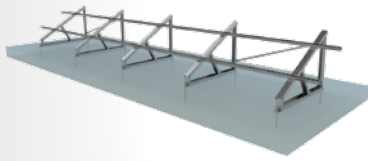
B Column Beam Diagonal Mounting



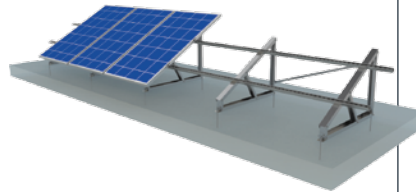
C L Bracket Mounting



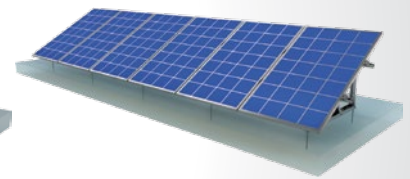
D Purlin Beam Mounting



E Panel Mounting



F



Advantages

- Time saving for installation
- Cost saving for installation
- Suitable solutions for different roof types
- 3 different types of angular adjustment
- Ballasted Mounting
- Tailored design solutions for customer
- Customer oriented engineering solutions

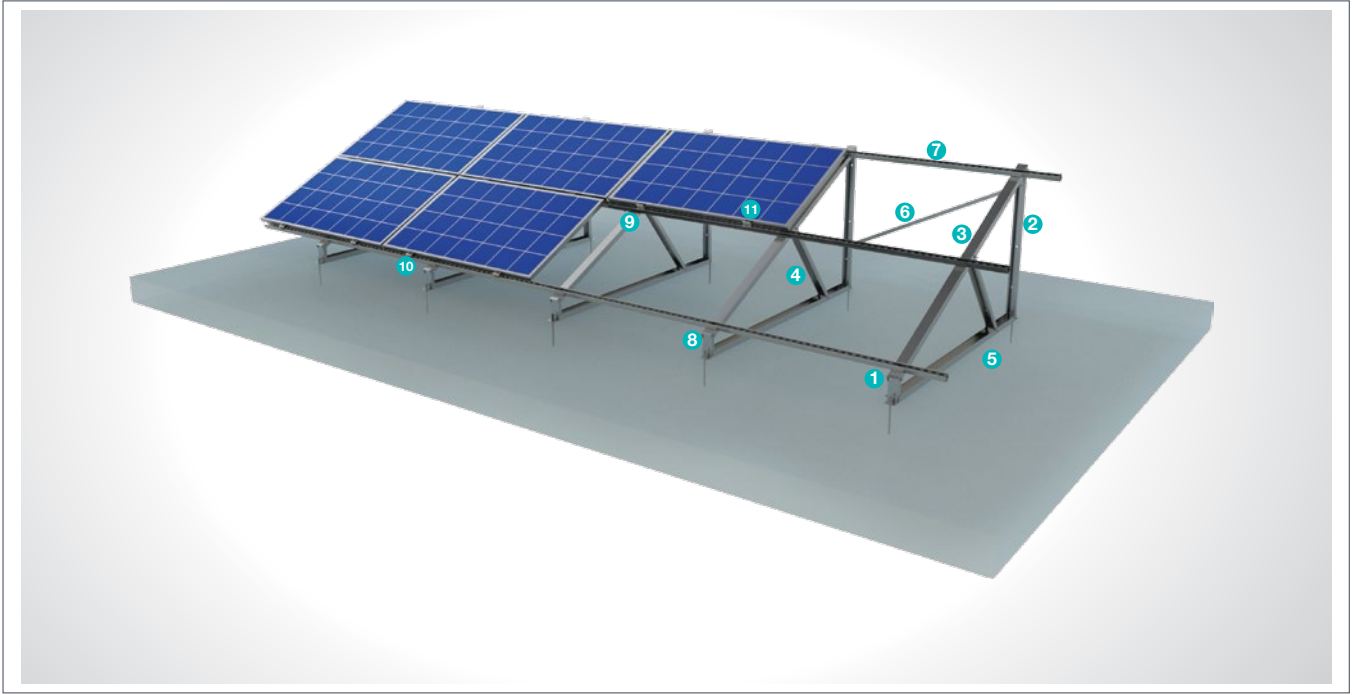
Technical Specifications

Description:	(KPT21) Flat Roof Steel Mounting System with 1 Vertical Panel
Mounting Method:	Roof Floor Mounting
Module Application:	Framed and Unframed
Column and Beam Coating:	EN ISO 1461
Column and Beam Material:	EN 10025 / EN 10029
Optional Beam Material:	EN 10346
Panel Retainer:	EN AW 6063
Connector Equipment:	DIN 934 / DIN933 / DIN 912, A2-70 DIN 50979

(KPT22) Flat Roof Steel Mounting System with 2 Horizontal Panels

Overview

KPT22, is a flat roof steel mounting system with 2 vertical panels. The system is an optimal application solution for installations of PV projects on large and small-sized roofs. After manufacturing the system components with high-technology machines and equipment, an excellent corrosion resistance is then achieved through hot-dip galvanized coating. The system, incorporating a high-level engineering design, provides assembly and cost advantages.



STEEL COLUMN



- **CK-70**
M8X30 Knurled Bolt
M8 Flanged Nut
M8 Washer

STEEL COLUMN



- **CK-70**
M8X30 Knurled Bolt
M8 Flanged Nut
M8 Washer

STEEL BEAM



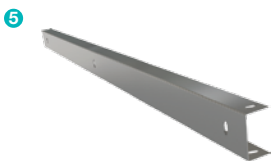
- **CU-75**
M8X30 Knurled Bolt
M8 Flanged Nut
M8 Washer

STEEL DIAGONAL



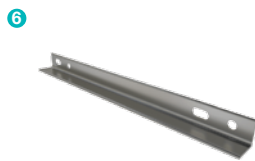
- **C-70**
M8X30 Knurled Bolt
M8 Flanged Nut
M8 Washer

STEEL COLUMN CONNECTION PIECE



- **CU70**
M12X30 Knurled Bolt
M12 Flanged Nut
M12 Washer

STEEL L BRACKET



- **CL-40X40**
M12X30 Knurled Bolt
M12 Flanged Nut
M12 Washer

STEEL PROFILE



- **CP41x41**
M12X30 Knurled Bolt
M12 Flanged Nut
M12 Washer

STEEL ANCHOR CONNECTOR



- **L50x70**
M8X30 Hex Bolt
M8 Flanged Nut
M8 Washer
Chemical Anchor

PURLIN CONNECTOR JOINING PIECE



- **C41**
M12X30 Knurled Bolt
M12 Flanged Nut
M12 Washer

PANEL SIDE RETAINER



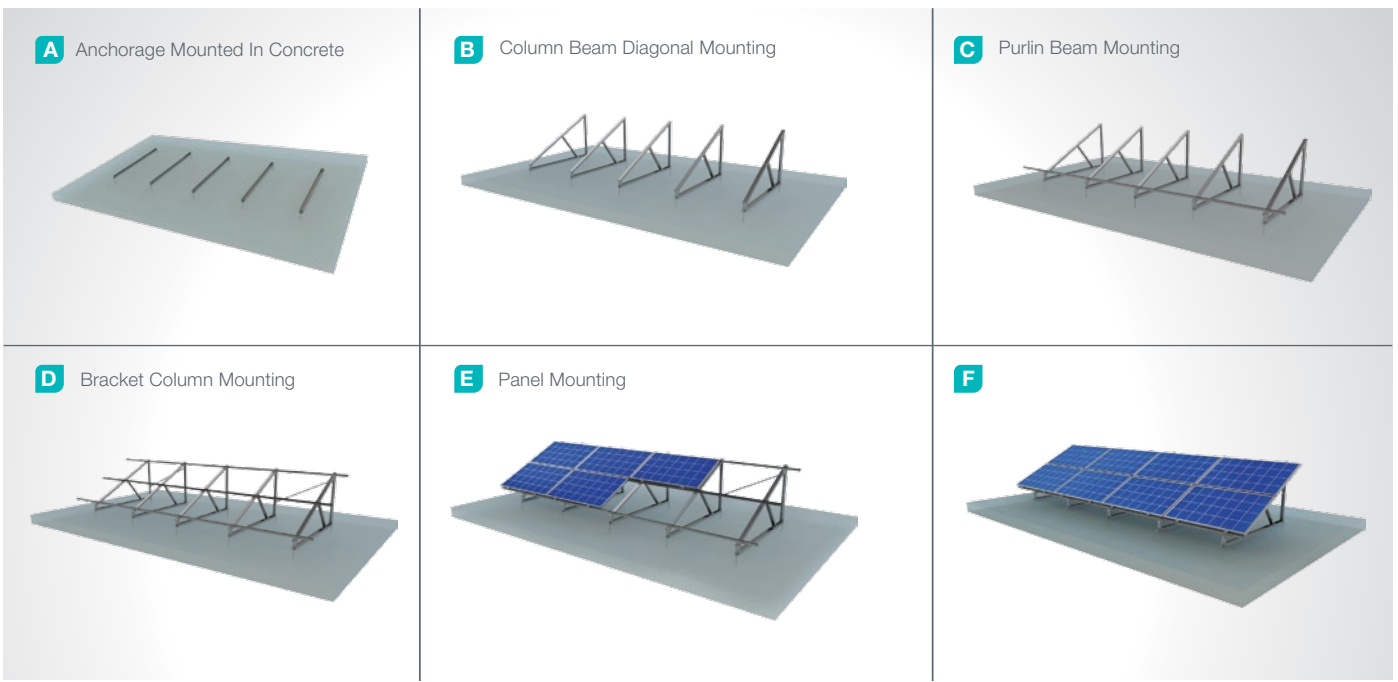
- **H30-H32-H40**
M8X30 Hex Bolt
M8 Rectangular Nut

PANEL CENTER RETAINER



- **L70**
M8X30 Hex Bolt
M8 Rectangular Nut

Installation Phase



Advantages

- Time saving for installation
- Cost saving for installation
- Suitable solutions for different roof types
- 3 different types of angular adjustment
- Ballasted Mounting
- Tailored design solutions for customer
- Customer oriented engineering solutions

Technical Specifications

Description:	(KPT22) Flat Roof Steel Mounting System with 2 Horizontal Panels
Mounting Method:	Roof Floor Mounting
Module Application:	Framed and Unframed
Column and Beam Coating:	EN ISO 1461
Column and Beam Material:	EN 10025 / EN 10029
Optional Beam Material:	EN 10346
Panel Retainer:	EN AW 6063
Connector Equipment:	DIN 934 / DIN933 / DIN 912, A2-70 DIN 50979