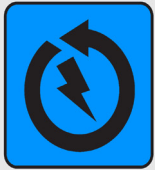


144 CELL SERIES

435W-445W



Class Leading Output:
445W top tier power performance



Advanced Technology:
Module efficiencies above 21%
MONO PERC 5 busbar cells



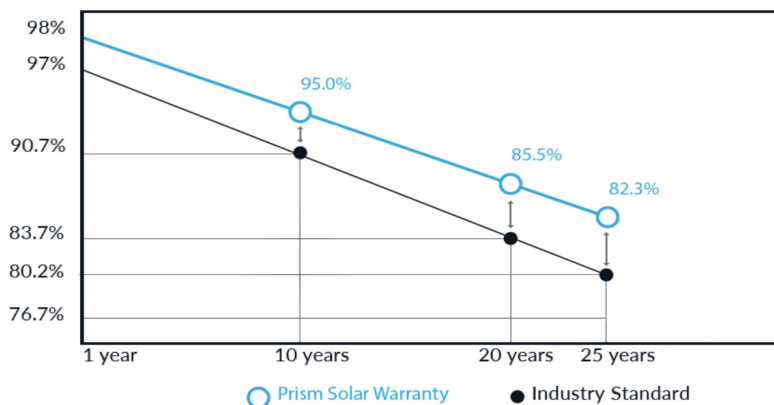
Reduced System Costs:
1500V robust framed design
drives lower installation costs



Certified Reliability:
Tested above and beyond
IEC Standards



Linear Performance Warranty



Proudly Engineering, Designed and Tested in the USA.



IEC 61215/ IEC 61730/ IEC 6170

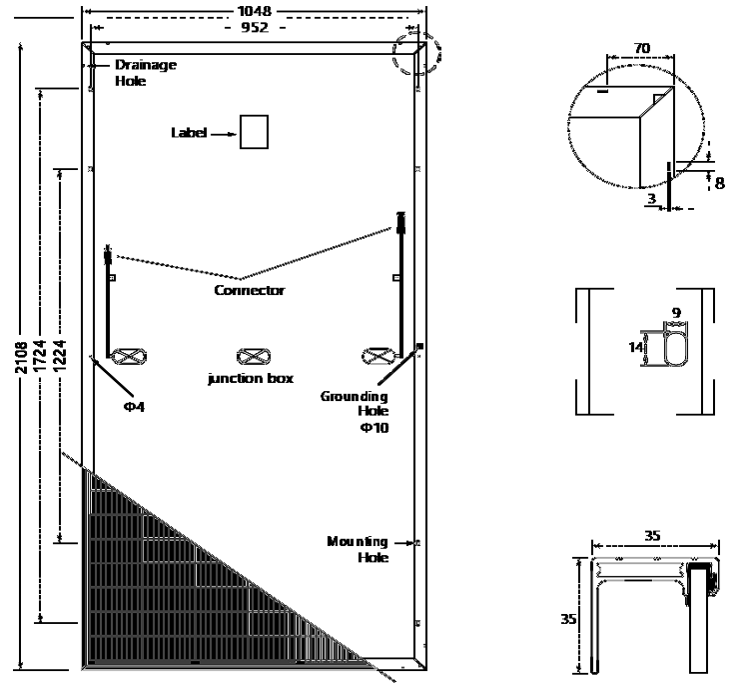
144 CELL SERIES

435-445W

Electrical Data PST-XXX-M72H 435W, 440W, 445W

Projected specifications @ STC

Parameters		STC ¹
Rated Power	P _{max} (W)	435/440/445
Rated Voltage	V _{mp} (V)	41.66/41.81/41.96
Rated Current	I _{mp} (A)	10.44/10.52/10.61
Open Circuit Voltage	V _{oc} (V)	50.35/50.50/50.58
Short Circuit Current	I _{sc} (A)	11.31/11.34/11.37
Module Efficiency	(%)	20.94/21.06/21.18
Max System Voltage	UL/IEC	1500V
Series Fuse Rating/Limiting Reverse Current		20A
Power Tolerance		-0/+5W
Electrical Parameter Tolerance		-5%/+5%
Power Temperature Coefficient		-0.37 %/°C
Voltage Temperature Coefficient (V _{oc})		-0.29 %/°C
Current Temperature Coefficient (I _{sc})		+0.05 %/°C
NOCT (C°)		45°C +/- 2°C



Dimensions, mm [in]

Length & width dimensions and j-box location are +/- 5mm.

Mechanical Data

Front Glass	3.2mm Tempered Low Iron, Anti-reflective coating
Frame Type	Anodized Aluminum Alloy
Bypass Diodes	3
Junction Box	IP68 with bypass-diodes
Cable (Type/Gauge/Length)	PV Wire 12 AWG 1400mm 4mm ²
Connectors	MC4 compatible
Exterior Glass Dimensions	2108mm X 1048mm X 35mm (83in X 41.26in X 1.38in)
Weight	25kg (55 lbs.)

Operating Conditions

Temperature	-40°C to 85°C (-40°F to 185°F)
Max Mechanical Load ³	5400 Pa wind load 5400 Pa snow load
Hail Safety Impact Velocity	

Certifications & Warranty

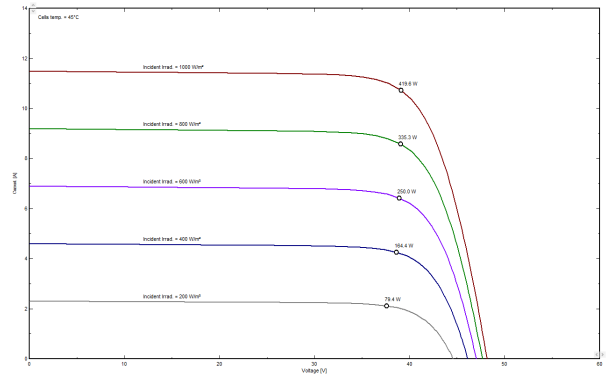
Certifications and Listings	IEC61215/61730, CEC, Salt Mist
Fire Rating	Type=1 ; Class C
Limited Warranty (Workmanship/Power)	25 Years/25 Years Output ⁴

1 - Measured at Standard Testing Conditions (STC): cell temp 25°C, AM1.5, 1000W/m².

2 - Length and width dimensions are +/- 5mm.

3 - To achieve this max weight loading, the support and racking system must meet the mechanical weight loading specified.

4 - Please see the Prism Solar Warranty for complete details.



Temperature Dependence PST-445W-M72H

Prism Solar
TECHNOLOGIES

520 Broad Street, Newark NJ 07102

845-883-4200

www.prismsolar.com

IMPORTANT: Prism modules are rated at STC conditions

CAUTION: Read the Installation Manual and Design Guide carefully before using this product. All specifications are subject to change without notice.

PST-xxxW-M72H specifications, all values subject to change without notice. All rights reserved.
rev 1