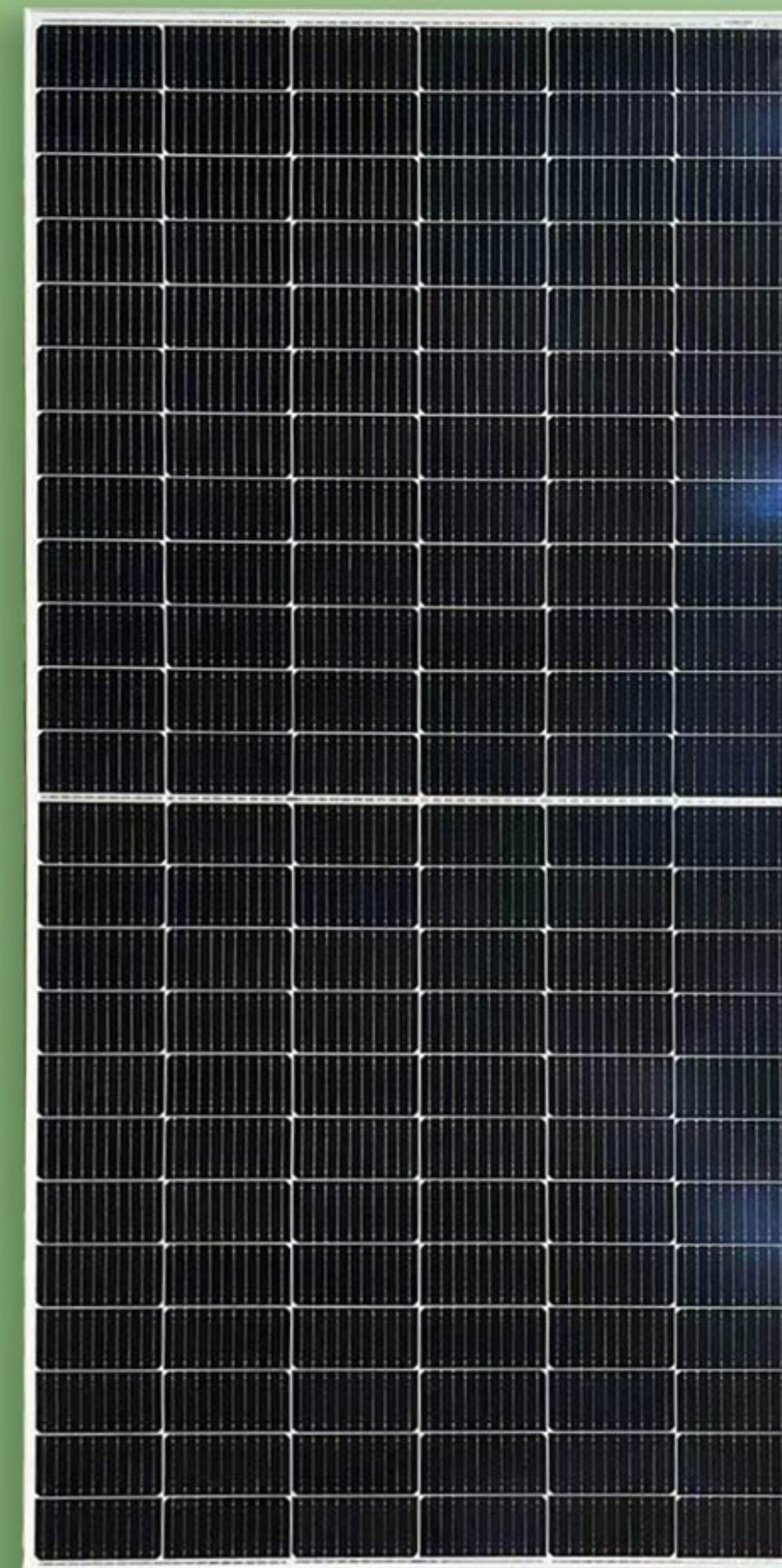


INE-72MH SERIES 6 INCH 144 CELLS

530-550w



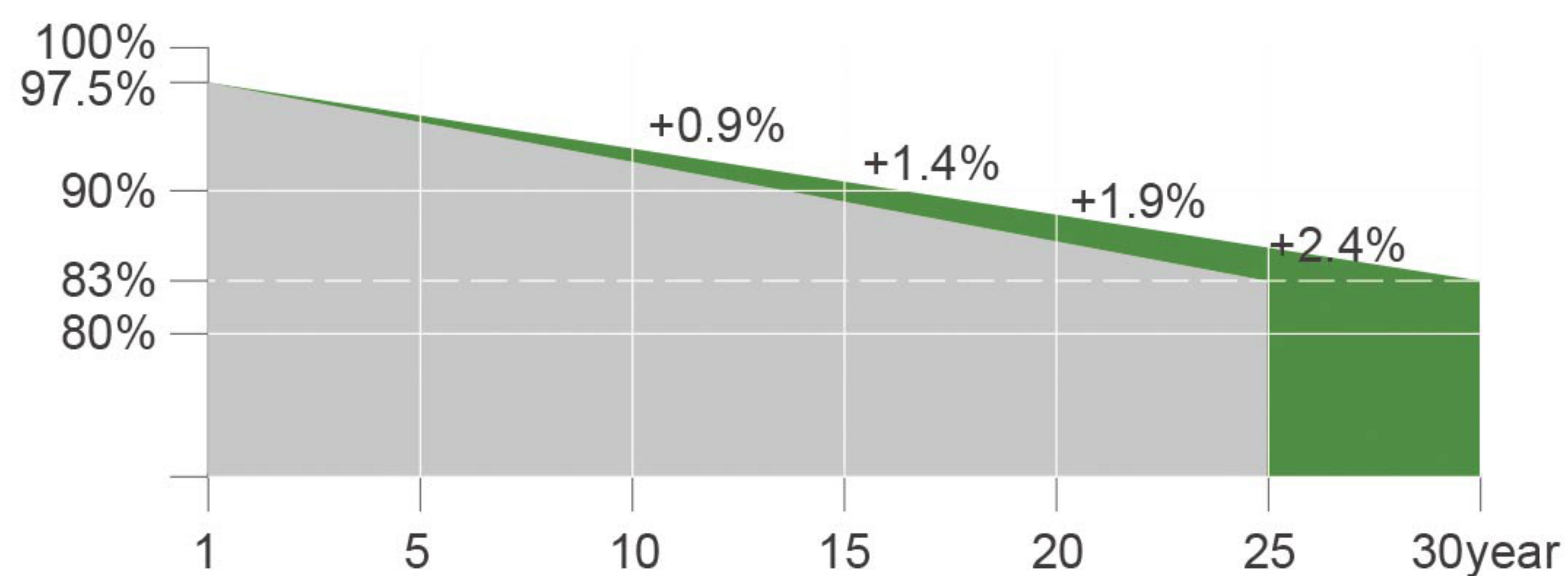
PRODUCT CERTIFICATES



SYSTEM CERTIFICATES

IEC 61215 / IEC 61730
 ISO 9001 : Quality Management System
 ISO 14001 : Environment Mangement System
 OHSAS 18001 : Occupational Health and Safety Management System

WARRANTY



INE-72MH SERIES 6 INCH 144 CELLS

ELECTRICAL PARAMETERS AT STC

Module Type	INE-530-72MH	INE-535-72MH	INE-540-72MH	INE-545-72MH	INE-550-72MH
Rated Maximum Power(Pmax) [W]	530	535	540	545	550
Open Circuit Voltage(Voc) [V]	49.30	49.45	49.60	49.75	49.90
Maximum Power Voltage(Vmp) [V]	41.31	41.47	41.64	41.80	41.96
Short Circuit Current(Isc) [A]	13.72	13.79	13.86	13.93	14.00
Maximum Power Current(Imp) [A]	12.83	12.90	12.97	13.04	13.11
Module Efficiency [%]	20.5	20.7	20.9	21.1	21.3

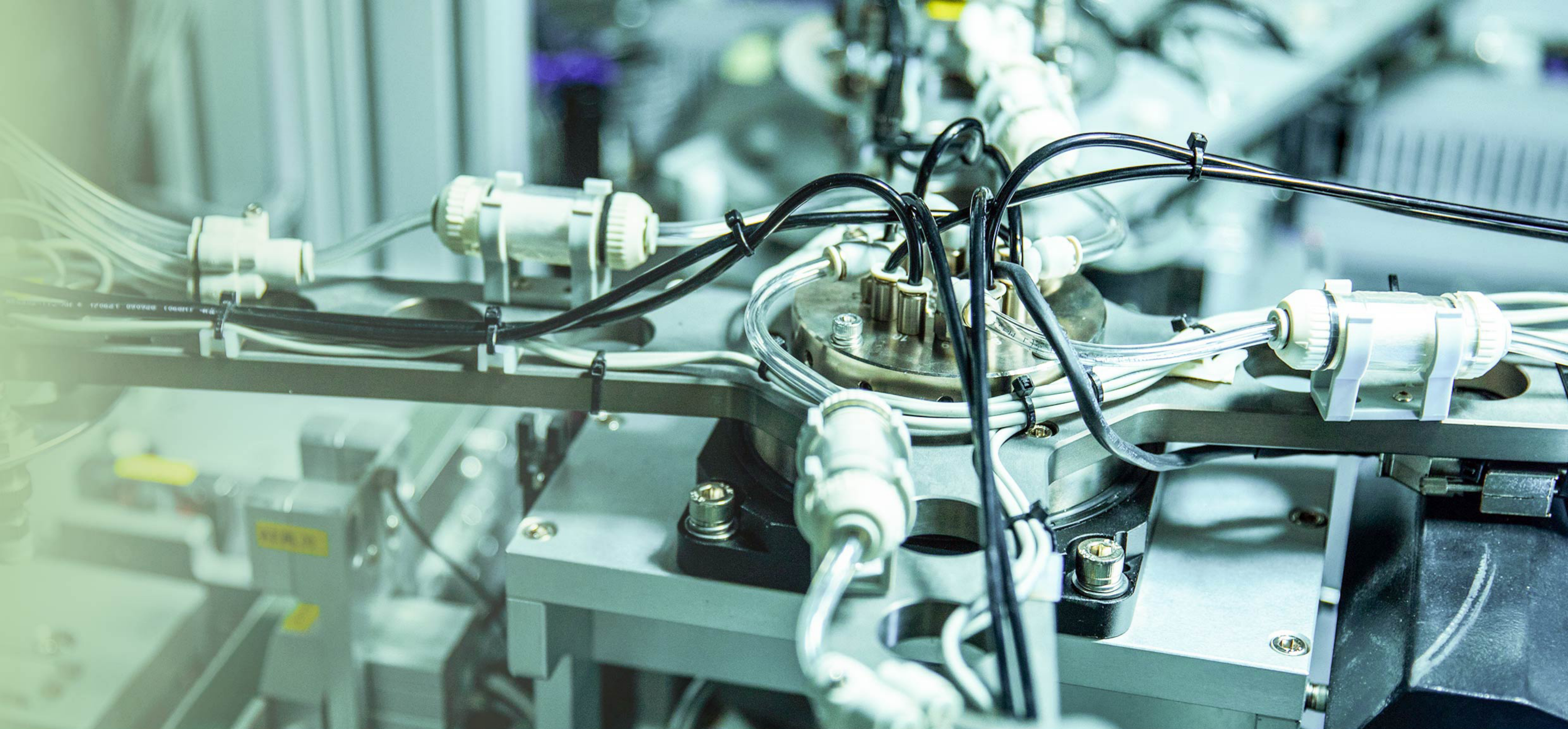
STC: Irradiance 1000 W/m2 module temperature 25°C AM=1.5

ELECTRICAL PARAMETERS AT NOCT

Module Type	INE-530-72MH	INE-535-72MH	INE-540-72MH	INE-545-72MH	INE-550-72MH
Rated Maximum Power(Pmax) [W]	401	405	408	412	416
Open Circuit Voltage(Voc) [V]	46.18	46.31	46.43	46.55	46.68
Maximum Power Voltage(Vmp) [V]	38.57	38.78	38.99	39.20	39.43
Short Circuit Current(Isc) [A]	11.01	11.05	11.09	11.13	11.17
Maximum Power Current(Imp) [A]	10.39	10.43	10.47	10.51	10.55

NOCT: Irradiance 800 W/m2 ambient temperature 20°C wind speed: 1m/s





MECHANICAL SPECIFICATION

Cell Type	Monocrystalline
Cell Dimensions	182mm
Cell Arrangement	144(6*24)
Weight	28.6kg
Module Dimensions	2279*1134*35mm
Cable	4.0 mm ² , wire length: 900 mm or Customized Length
Front Glass	3.2 mm AR coating tempered glass, low iron
Frame	Anodized aluminium alloy
Junction Box	IP67/IP68
Connector	MC4 Compatible
Mechanical Load	Front side 5400Pa/ Rear side 2400Pa

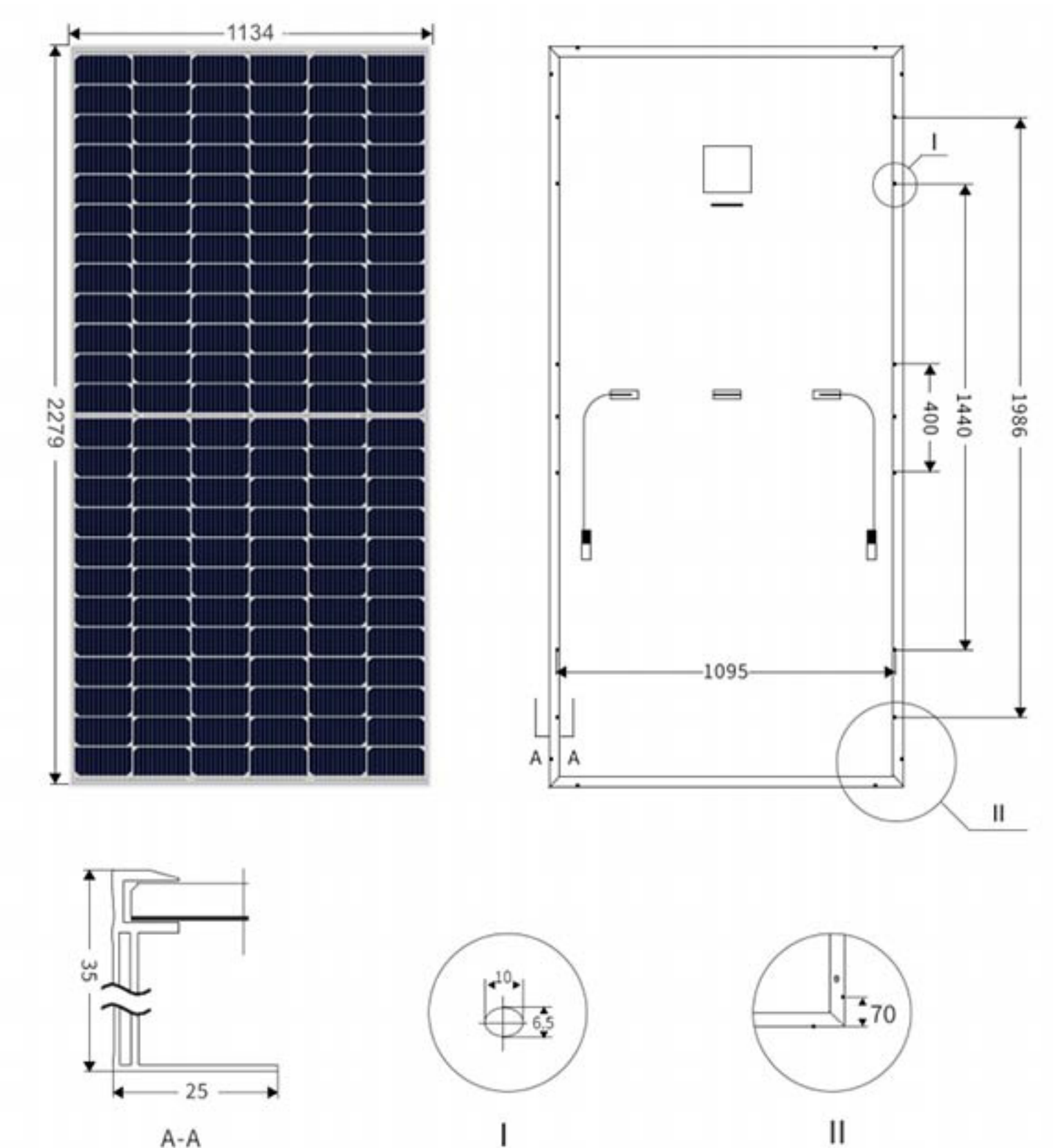
OPERATING CONDITIONS

Power Tolerance (W)	(0,+4.99)
Maximum System Voltage (V)	1000VDC / 1500VDC
Pmax Temperature Coefficient	-0.36 %/°C
Voc Temperature Coefficient	-0.28%/°C
Isc Temperature Coefficient	+0.05 %/°C
Nominal Operating Cell Temperature	45±2 °C
Operating Temperature	-40°C-+85°C
Maximum Series Fuse	25A

PACKING CONFIGURATION

Packaging Material	31pcs/pallet
Quantity/Pallet	10pallet/20GP; 20pallet/40HQ
Quantity/Container	310pcs/20GP; 620pcs/40HQ

Technical drawing(INE-XXX-72MH)



* All Dimensions in mm.
 * The above drawing is a graphical representation of the product.
 For engineering quality drawings please contact IDEAL NEW ENERGY.

I-V Curve

