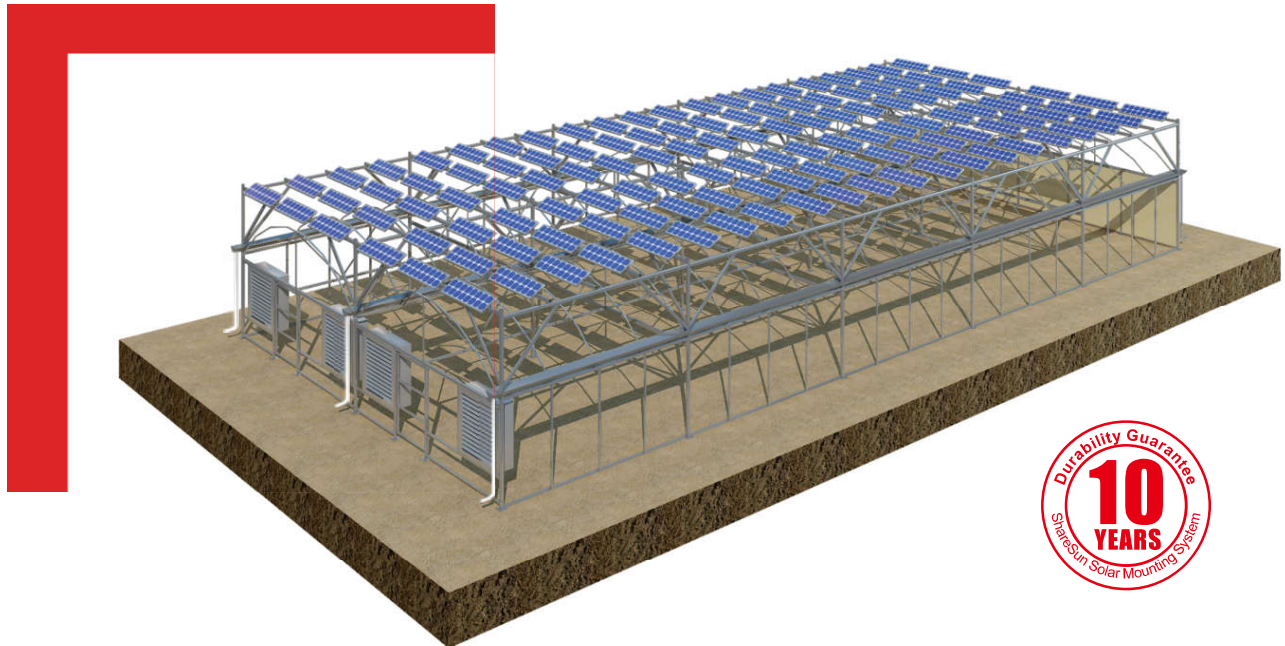


# The Solar Greenhouse Mounting

(SS-SGM)



## System introduction

The solar green house mounting contains a complete set of greenhouse materials and mounting for solar modules. According to the fixed height, the required transmittance and the installed capacity, the mounting are designed differently. From safety and economy aspects, we design the mounting. We use hot galvanized Q235 steel for structure material. Stainless steel 304 or hot-dip galvanized fasteners can be selected according to customers' needs. On the basis of meeting the mechanical calculation, customers can achieve the best cost.

## Technical Data

Installation site: Farm land

Installation angle: 5-45 degree

PV modules: framed or unframed

Module layout : Vertical or horizontal

Max wind speed: 45m/s

Material: Hot galvanized Q235 steel & SUS304, hot galvanized fasteners

Color: Silver Gray

Standards: BS6399, JISC 8955, Euro code 1, DIN 1055, AS/NZS 1170 and other standards

Warranty: 10 years warranty

