

INE-72M SERIES 6 INCH 72 CELLS

420-440w

PRODUCT CERTIFICATES



KEY FEATURES

0~3%

Output positive tolerance/Guaranteed 0~3% positive tolerance ensures the power output reliability

9BB

9BB full cell technology/Higher efficiency cell and higher output of power

PID

Anti PID technology/Excellent Anti-PID performance

NEW
IEC

Tested and certified according IEC standard /IEC61215/IEC61730 standard quality

✓

Highly reliable due to stringent quality control/Three times strict EL testing beyond certification requirements

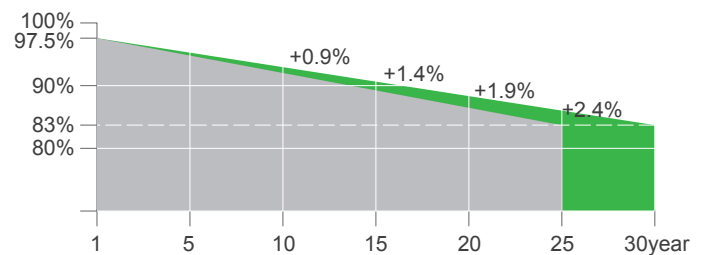
⊖

Lower temperature coefficients/Outstanding power output capability at low irradiance

SYSTEM CERTIFICATES

IEC 61215 / IEC 61730
ISO 9001 : Quality Management System
ISO 14001 : Environment Mangement System
OHSAS 18001 : Occupational Health and Safety Management System

WARRANTY



12
years

12-year Warranty for Materials and Processing

30
years

30-year Warranty for Extra Linear Power Output

ELECTRICAL PARAMETERS AT STC

| Module Type | INE-420-72M | INE-425-72M | INE-430-72M | INE-435-72M | INE-440-72M |
|--------------------------------|-------------|-------------|-------------|-------------|-------------|
| Rated Maximum Power(Pmax) [W] | 420 | 425 | 430 | 435 | 440 |
| Open Circuit Voltage(Voc) [V] | 48.8 | 49.0 | 49.2 | 49.4 | 49.6 |
| Maximum Power Voltage(Vmp) [V] | 40.2 | 40.4 | 40.6 | 40.8 | 41.0 |
| Short Circuit Current(Isc) [A] | 11.04 | 11.11 | 11.19 | 11.26 | 11.33 |
| Maximum Power Current(Imp) [A] | 10.45 | 10.52 | 10.6 | 10.67 | 10.74 |
| Module Efficiency [%] | 19.2 | 19.4 | 19.7 | 19.9 | 20.1 |

STC: Irradiance 1000 W/m² module temperature 25°C AM=1.5

ELECTRICAL PARAMETERS AT NOCT

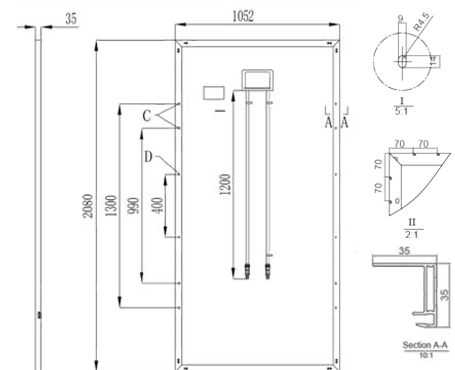
| Module Type | INE-420-72M | INE-425-72M | INE-430-72M | INE-435-72M | INE-440-72M |
|--------------------------------|-------------|-------------|-------------|-------------|-------------|
| Rated Maximum Power(Pmax) [W] | 311 | 314.8 | 318.5 | 322.2 | 326 |
| Open Circuit Voltage(Voc) [V] | 45.5 | 45.7 | 45.9 | 46.1 | 46.3 |
| Maximum Power Voltage(Vmp) [V] | 37.1 | 37.3 | 37.5 | 37.7 | 37.9 |
| Short Circuit Current(Isc) [A] | 8.9 | 8.95 | 9.02 | 9.08 | 9.13 |
| Maximum Power Current(Imp) [A] | 8.38 | 8.44 | 8.5 | 8.56 | 8.61 |

NOCT: Irradiance 800 W/m² ambient temperature 20°C wind speed: 1m/s

MECHANICAL SPECIFICATION

| | |
|-------------------|--|
| Cell Type | Monocrystalline |
| Cell Dimensions | 158.75*158.75mm |
| Cell Arrangement | 72(6*12) |
| Weight | 24kg |
| Module Dimensions | 2080*1052*35mm |
| Cable | 4.0 mm ² , wire length: 900 mm or Customized Length |
| Front Glass | 3.2 mm AR coating tempered glass, low iron |
| Frame | Anodized aluminium alloy |
| Junction Box | IP67/IP68 |
| Connector | MC4 Compatible |
| Mechanical Load | Front side 5400Pa/ Rear side 2400Pa |

Technical drawing(INE-XXX-72M)



* All Dimensions in mm.

* The above drawing is a graphical representation of the product.
For engineering quality drawings please contact IDEAL NEW ENERGY.

OPERATING CONDITIONS

| | |
|------------------------------------|-------------------|
| Power Tolerance (W) | (0, +4.99) |
| Maximum System Voltage (V) | 1000VDC / 1500VDC |
| Pmax Temperature Coefficient | -0.36 %/°C |
| Voc Temperature Coefficient | -0.28%/°C |
| Isc Temperature Coefficient | +0.05 %/°C |
| Nominal Operating Cell Temperature | 45±2 °C |
| Operating Temperature | -40°C-+85°C |
| Maximum Series Fuse | 20A |

PACKING CONFIGURATION

| | |
|--------------------|------------------------------|
| Quantity/Pallet | 30pcs/pallet |
| Pallets/Container | 10pallet/20GP; 22pallet/40HQ |
| Quantity/Container | 280pcs/20GP; 696pcs/40HQ |

I-V Curve

