



# Poly Crystalline 120 Cells 270-290 watt

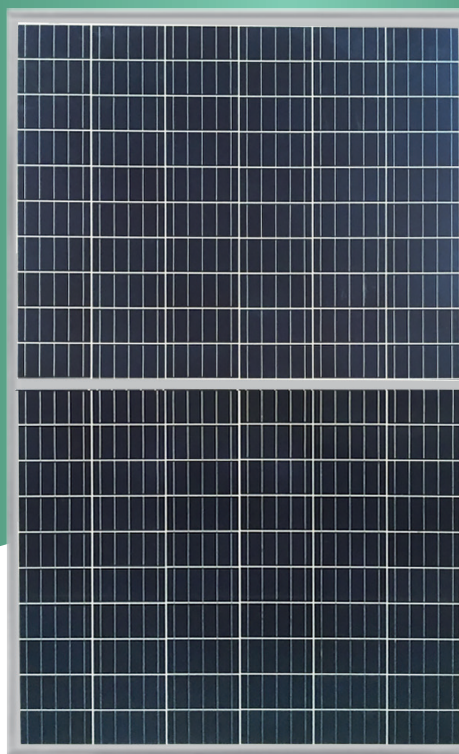
POLY CRYSTALLINE MODULE

Positive power tolerance of 0~+3%

ISO9001:2015

Certified factory

IEC61215/IEC61730



### 5 Busbar Solar Cell:

5 busbar solar cell adopts new technology to improve the efficiency of modules, offers a better aesthetic appearance, making it perfect for rooftop installation.



### High Power Output:

Polycrystalline 120-cell module achieves a power output up to 290Wp.



### PID RESISTANT:

Eagle modules pass PID test, limited power degradation by PID test is guaranteed for mass production.



### Low-light Performance

Advanced glass and cell surface textured design ensure excellent performance in low-light environment.



### Severe Weather Resilience

Certified to withstand: wind load (2400 Pascal) and snow load (5400 Pascal).



### Durability Against Extreme Environmental Conditions

High salt mist and ammonia resistance certified by TUV Rheinland.



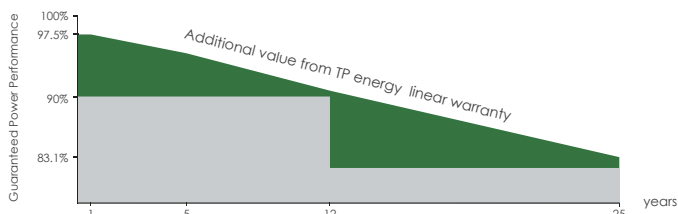
### Temperature Coefficient:

Improved temperature coefficient decreases power loss during high temperatures.

## ► Superior Warranty

### TP ENERGY SOLAR PERFORMANCE WARRANTY

- linear performance warranty
- Standard performance warranty

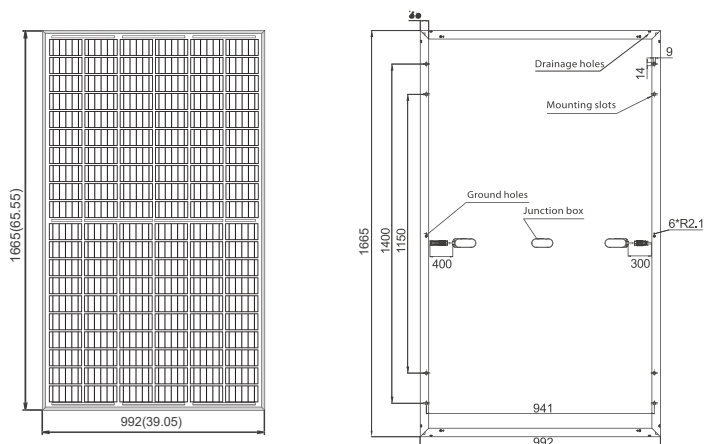


## ► Comprehensive Certificates

- IEC61215/IEC61730/IEC61701/IEC62716
- ISO 9001: Quality Management System
- ISO 14001: Environmental Management System
- ISO14064: Greenhouse Gases Emissions Verification
- OHSAS 18001: Occupation Health and Safety Management System



### ▶ DIMENSIONS OF PV MODULE(mm)



FRONT VIEW

### ▶ MECHANICAL DIAGRAMS

|               |   |
|---------------|---|
| Cell Type     | Poly PERC 157x78.5mm  |
| No. of cells  | 6x10x2  |
| Dimensions    | 1665x992x35mm   |
| Weight        | 18.5kg  |
| Front Glass   | 3.2mm, Anti-Reflection Coating, High Transmission, Low Iron, Tempered Glass |
| Frame         | Anodized Aluminium Alloy  |
| J-Box         | IP67 Rated  |
| Output Cables | TÜV 1x4.0mm <sup>2</sup> Length 900mm or Customized Length                  |

### ▶ Electrical Characteristics

| Module Type                 | TP120-270P |       | TP120-275P |       | TP120-280P |       | TP120-285P |       | TP120-290P |       |
|-----------------------------|------------|-------|------------|-------|------------|-------|------------|-------|------------|-------|
|                             | STC        | NOCT  | STC        | NOCT  | STC        | NOCT  | STC        | NOCT  | STC        | NOCT  |
| Maximum Power (Pmax)        | 270Wp      | 202Wp | 275Wp      | 206Wp | 280Wp      | 210Wp | 285Wp      | 214Wp | 290Wp      | 218Wp |
| Maximum Power Voltage (Vmp) | 31.3V      | 31.0V | 31.5V      | 31.2V | 31.7V      | 31.4V | 31.9V      | 31.6V | 32.1V      | 31.8V |
| Maximum Power Current (Imp) | 9.51A      | 6.97A | 9.56A      | 7.06A | 9.61A      | 7.15A | 9.66A      | 7.24A | 9.71A      | 7.32A |
| Open-circuit Voltage (Voc)  | 38.0V      | 35.2V | 38.2V      | 35.4V | 38.4V      | 35.6V | 38.6V      | 35.8V | 38.8V      | 36.0V |
| Short-circuit Current (Isc) | 8.62A      | 7.45A | 8.73A      | 7.52A | 8.84A      | 7.59A | 8.95A      | 7.68A | 9.05A      | 7.75A |
| Module Efficiency STC (%)   | 16.30%     |       | 16.60%     |       | 16.90%     |       | 17.20%     |       | 17.50%     |       |

### ▶ Temperature Ratings

|   |             |
|---|-------------|
| NMOT (Nominal Module Operating Temperature) | 45°C (±2°C) |
| Temperature Coefficient of Pmax             | - 0.36%/°C  |
| Temperature Coefficient of Voc              | - 0.30%/°C  |
| Temperature Coefficient of Isc              | 0.066%/°C   |

### ▶ Maximum Ratings

|                                 |               |
|---------------------------------|---------------|
| Operational Temperature         | -40~+85°C     |
| Maximum System Voltage          | 1500VDC (IEC) |
| Max Series Fuse Rating          | 20A           |
| Temperature Coefficients of Isc | 0.06%/°C      |

### ▶ Warranty

|                                       |
|---------------------------------------|
| 12 Years Product Workmanship Warranty |
| 25 Years Power Warranty               |

### ▶ Packaging Configuration

|                            |        |
|----------------------------|--------|
| Modules per pallet:        | 30pcs  |
| Modules per 40HQ container | 780pcs |

### ▶ I-V-Curve

