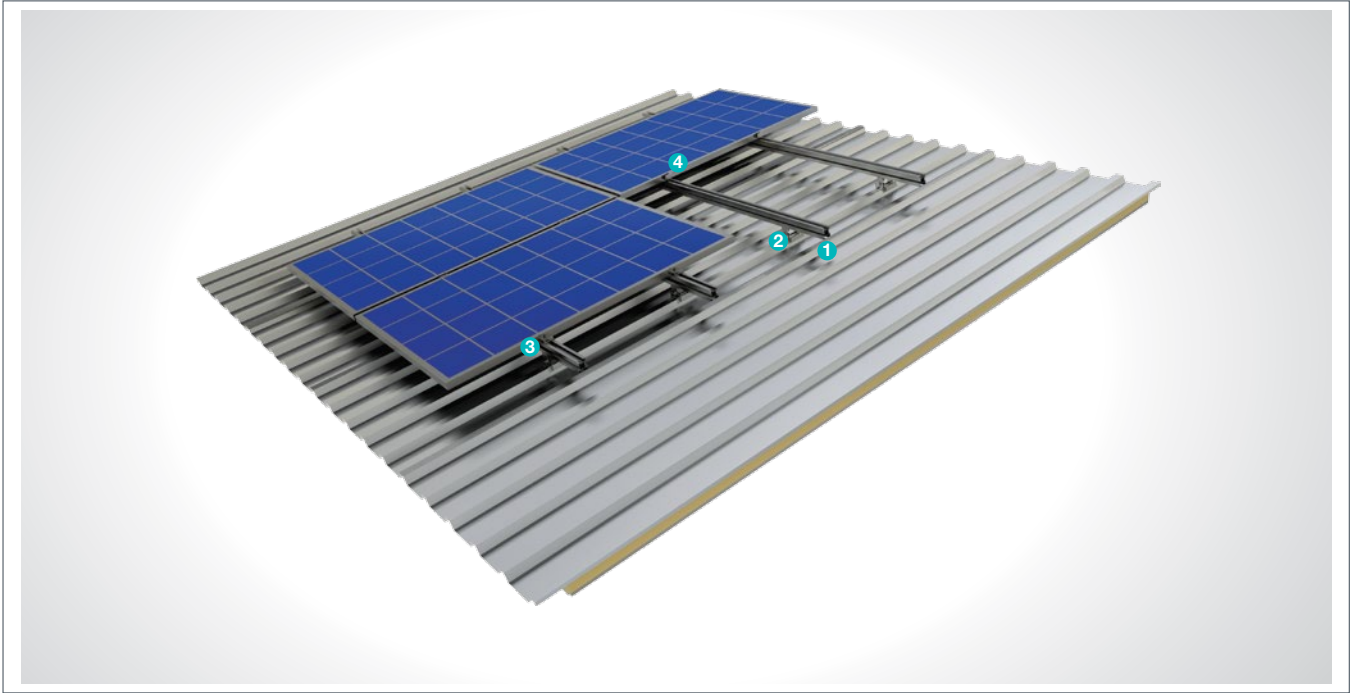


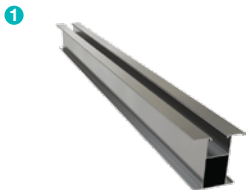
(KPT27) Pitched Roof Aluminum and Stainless Steel Mounting System

Overview

KPT27, is a pitched roof aluminum and stainless steel mounting system. The system is an optimal application solution for installations of PV projects on large and small-sized roofs. System components are manufactured with high-tech machinery and equipment. The system, incorporating a high-level engineering design, provides assembly and cost advantages.



ALUMINUM PURLIN



■ **AA-90x45**
M10/T25 Head Bolt
M10 Flanged Nut

ALUMINUM PURLIN CONNECTION PIECE



■ **PT-Stainless**
M8X30 Round Head Bolt
M8 Flanged Nut
Pitched Roof Screw

PANEL SIDE HOLDER



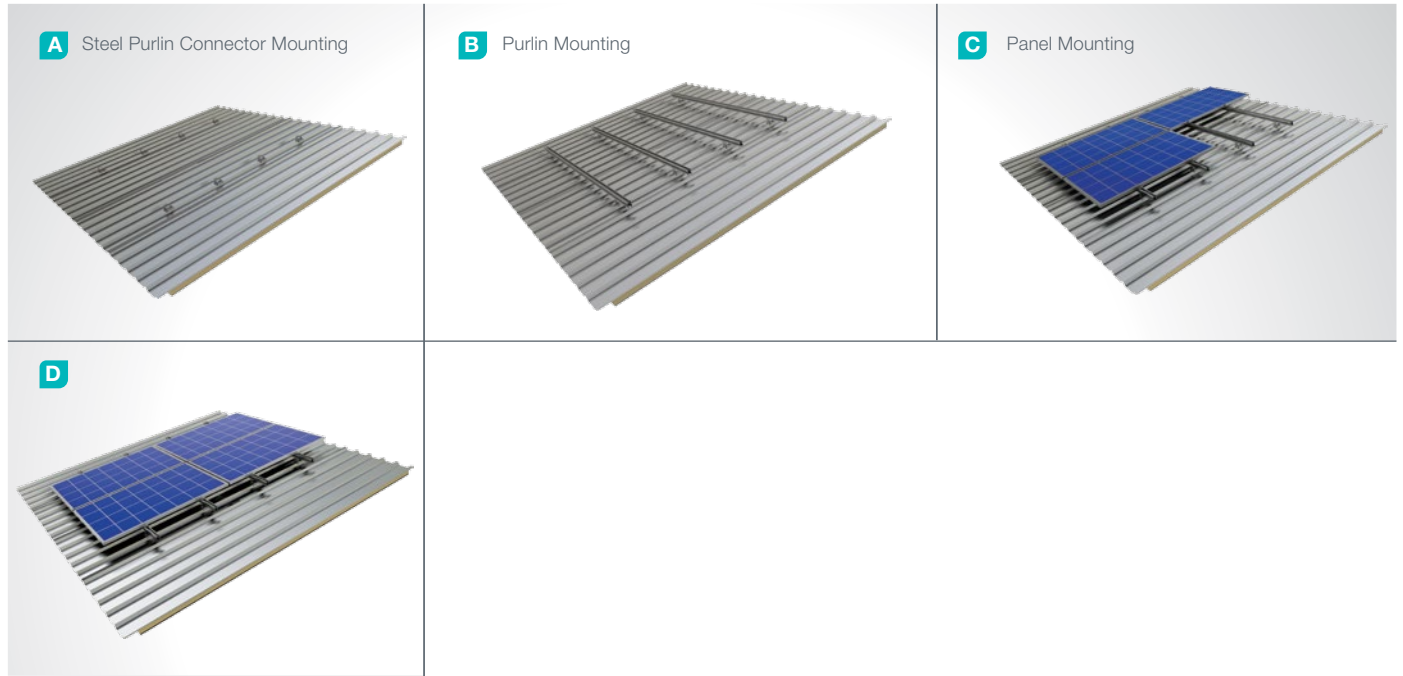
■ **H30-H32-H40**
M8X30 Hex Bolt
M8 Rectangular Nut

PANEL CENTER HOLDER



■ **L70**
M8X30 Hex Bolt
M8 Rectangular Nut

Installation Phase



Advantages

- Time saving for installation
- Cost saving for installation
- Horizontal and Vertical positioning
- Suitable solutions for different roof types
- Tailored design solutions for customer
- Customer oriented engineering solutions

Technical Specifications

Description:	(KPT27) Pitched Roof Aluminum and Stainless Steel Mounting System
Mounting Method:	Pitched Roof Mounting
Module Application:	Framed and Unframed
Beam Material:	EN AW 6063
Panel Retainer:	ASTM A 304 / A 316
Purlin Material:	EN AW 6063
Connector Equipment:	DIN 934 / DIN933 / DIN 912, A2-70
Optional Connector Equipment:	Special Type Adhesive