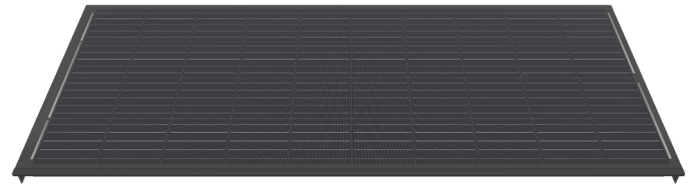


Border solar modules for M325-60-b GF NICER 3

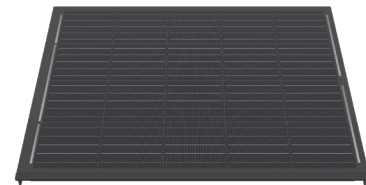
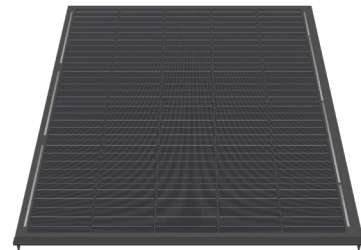
0322.1430 Swiss Premium M217-4x10-b GF NICER 3

Nominal power (Pmpp)	217 Wp
Nominal voltage (Umpp)	22.6 V
Nominal current (Impp)	9.60 A
Open circuit voltage (Uoc)	26.9 V
Short circuit current (Isc)	10.61 A
Number of cells (matrix)	40 (4x 10)
Dimensions (LxWxH) ±3.0 mm	725x1671x57 mm
Modular dimensions (LxW)	696x1676 mm
Weight	16 kg



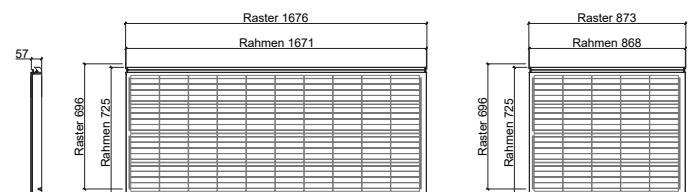
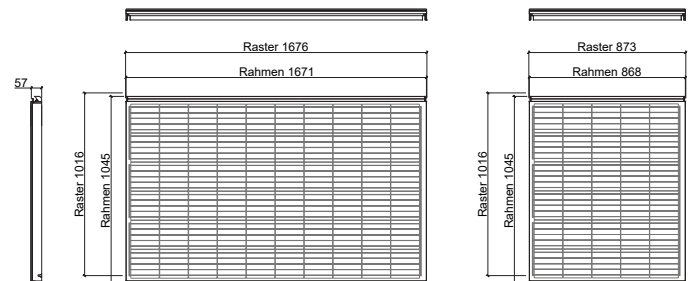
0322.1431 Swiss Premium M162-6x5-b GF NICER 3

Nominal power (Pmpp)	162 Wp
Nominal voltage (Umpp)	17.0 V
Nominal current (Impp)	9.60 A
Open circuit voltage (Uoc)	20.2 V
Short circuit current (Isc)	10.61 A
Number of cells (matrix)	30 (6x 5)
Dimensions (LxWxH) ±3.0 mm	1045x868x57 mm
Modular dimensions (LxW)	1016x873 mm
Weight	13 kg



0322.1432 Swiss Premium M108-4x5-b GF NICER 3

Nominal power (Pmpp)	108 Wp
Nominal voltage (Umpp)	11.3 V
Nominal current (Impp)	9.60 A
Open circuit voltage (Uoc)	13.4 V
Short circuit current (Isc)	10.61 A
Number of cells (matrix)	20 (4x 5)
Dimensions (LxWxH) ±3.0 mm	725x868x57 mm
Modular dimensions (LxW)	696x873 mm
Weight	9.5 kg



Customized special modules

3338.0991 Special module NICER 2/3 Cat. 1	active / complexity: low
3338.0992 Special module NICER 2/3 Cat. 2	active / complexity: medium
3338.0993 Special module NICER 2/3 Cat. 3	active / complexity: high
3338.0994 Special module NICER 2/3 Cat. 4	passive / complexity: high

Border modules are electrically compatible with the corresponding basic module (60 solar cells). For technical reasons of production, despite utmost care, the surface properties and optical colour effect may vary from the basic module.

STC (Standard Test Conditions): irradiance 1000 W/m², cell temperature 25°C, AM 1.5
Measuring tolerances ±3 % (Pmpp); ±10 % (Umpp, Impp, Uoc, Isc)



Note: The instructions in the installation manual must be strictly complied with. Further information about approved utilization of products can be found in the installation manual or can be requested from the technical service.

E-mail: info@megasol.ch
Hotline: +41 62 919 90 90
www.megasol.ch



Megasol partner

Subject to errors and technical modifications.
© Megasol Energy Ltd | Version: 12/2019