

# IBS72M PERC

## KEY FEATURES



years  
**Product  
Warranty**



years  
**Performance  
Warranty**



Cell efficiency  
up to **21.1 %**



Module  
efficiency up  
to **19.1 %**



Heavy snow load  
up to **5,400 Pa**



Wind load  
up to **2,400 Pa**



**PID Free**



## ELECTRICAL PARAMETERS

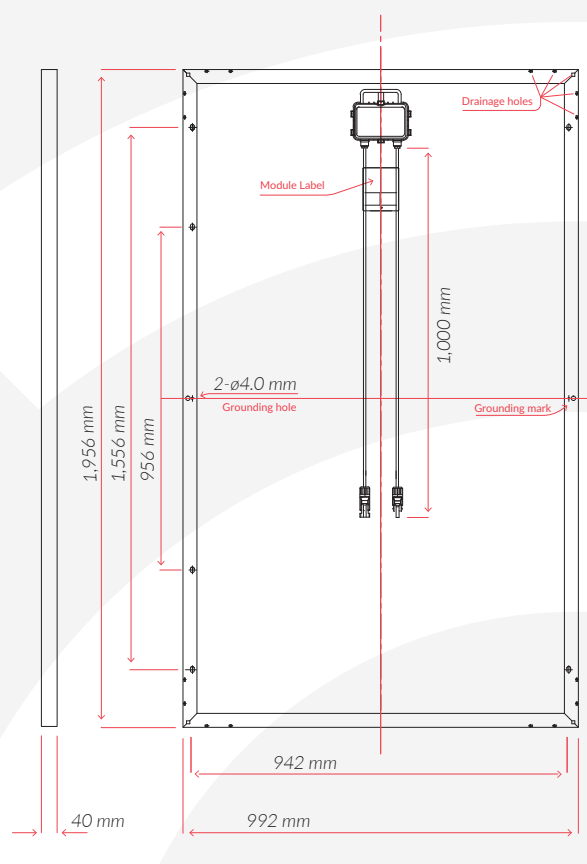
| Model                                      | IBS72M     |            |
|--|------------|------------|
| Maximum Power (Pmax/W)                     | <b>375</b> | <b>380</b> |
| Operating Voltage (V <sub>mpp</sub> /V)    | 39.6       | 39.8       |
| Operating Current (I <sub>mpp</sub> /A)    | 9.47       | 9.55       |
| Open-Circuit Voltage (V <sub>oc</sub> /V)  | 48.2       | 48.4       |
| Short-Circuit Current (I <sub>sc</sub> /A) | 9.92       | 9.99       |
| Module Efficiency η <sub>m</sub> (%)       | 19.33      | 19.58      |
| Power Tolerance                            | 0+5 Wp     |            |
| NOCT                                       | 47°C±2°C   |            |

Values at Standard Test Conditions STC (AM 1.5, Irradiance 1000 W/m<sup>2</sup>, Cell Temperature 25°C)

## SPECIFICATIONS

|                          |                                      |
|--------------------------|--------------------------------------|
| Cell Type                | Mono Crystalline PERC                |
| Cells size               | 156,75x156,75 mm                     |
| Number of cells          | 72                                   |
| Weight                   | 21.0 kg                              |
| Front side glass         | 3,2 mm hardened solar tempered glass |
| Dimensions               | 1,956x992x40 mm                      |
| Cable length             | 1,000 mm                             |
| Cable cross section size | 4 mm <sup>2</sup>                    |
| Number of bypass diodes  | 3                                    |
| Connectors               | MC4 compatible                       |
| Frame                    | Anodized Aluminium Alloy             |
| Junction Box             | IP67                                 |

## ENGINEERING DRAWINGS



## WORKING CONDITIONS

|                         |                                      |
|-------------------------|--------------------------------------|
| Maximum System Voltage  | DC 1,000 V (IEC) / 1,500 V available |
| Operating temperature   | -40°C / +85°C                        |
| Maximum reverse current | 15A                                  |
| IP protection level     | IP65                                 |
| Safety class            | II                                   |

## TEMPERATURE COEFFICIENTS

|  |             |
|--|-------------|
| Power temperature coefficient (P <sub>max</sub> )  | -0,38 %/°C  |
| Voltage temperature coefficient (V <sub>oc</sub> ) | -0,29 %/°C  |
| Current temperature coefficient (I <sub>sc</sub> ) | +0,052 %/°C |



## PACKAGING INFORMATION (I)

|                  |                      |
|------------------|----------------------|
| Pallet dimension | 2,010/1,120/1,130 mm |
| Pallet weight    | 570 kg               |
| Modules/pallet   | 26                   |

## PACKAGING INFORMATION (II)

| Container             | 20 GP | 40 HQ (I) | 40 HQ (II) |
|-----------------------|-------|-----------|------------|
| Pallets per container | 10    | 24        | 24         |
| Pieces per container  | 260   | 624       | 684        |

## PARTNERS