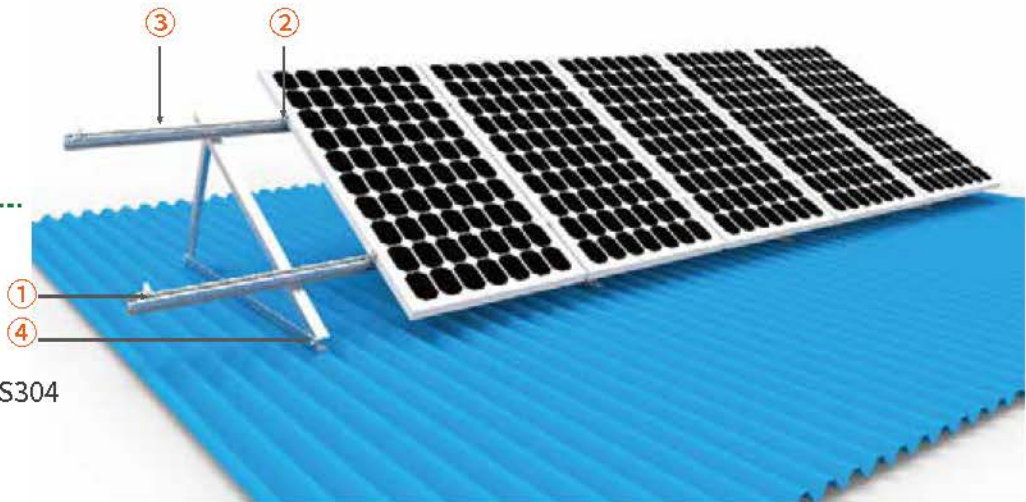


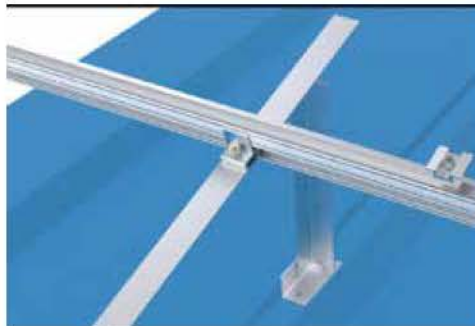
## 3.9 Tripod Roof Mount

### Specification

Tilt Angle: 0° - 60°  
 Wind Load: 42m/s  
 Snow Load: 1.4KN/m<sup>2</sup>  
 Material: AL6005-T5/SUS304



\* Applicable for various rooftops



### Component



① GM-EC-35D



② GM-MC-35D



③ GM-R05-light



④ GM-FT10-01